

A faint, light blue world map is centered in the background of the slide, showing the outlines of continents and oceans.

Dynamic Network Device Mapping System (DNDMS)

Requirements Specification

By

SKYNET Software

Welcome

Mr. Ken Swarner
Senior Systems Administrator
School of Science
Siena College
&
Mr. Eric Crossman
Assistant Systems Administrator
School of Science
Siena College

Agenda

- Introductions
- Data Flow Diagrams
- Use-Case Narrative
- Functional Requirements Inventory
- Prototypes
- Timeline

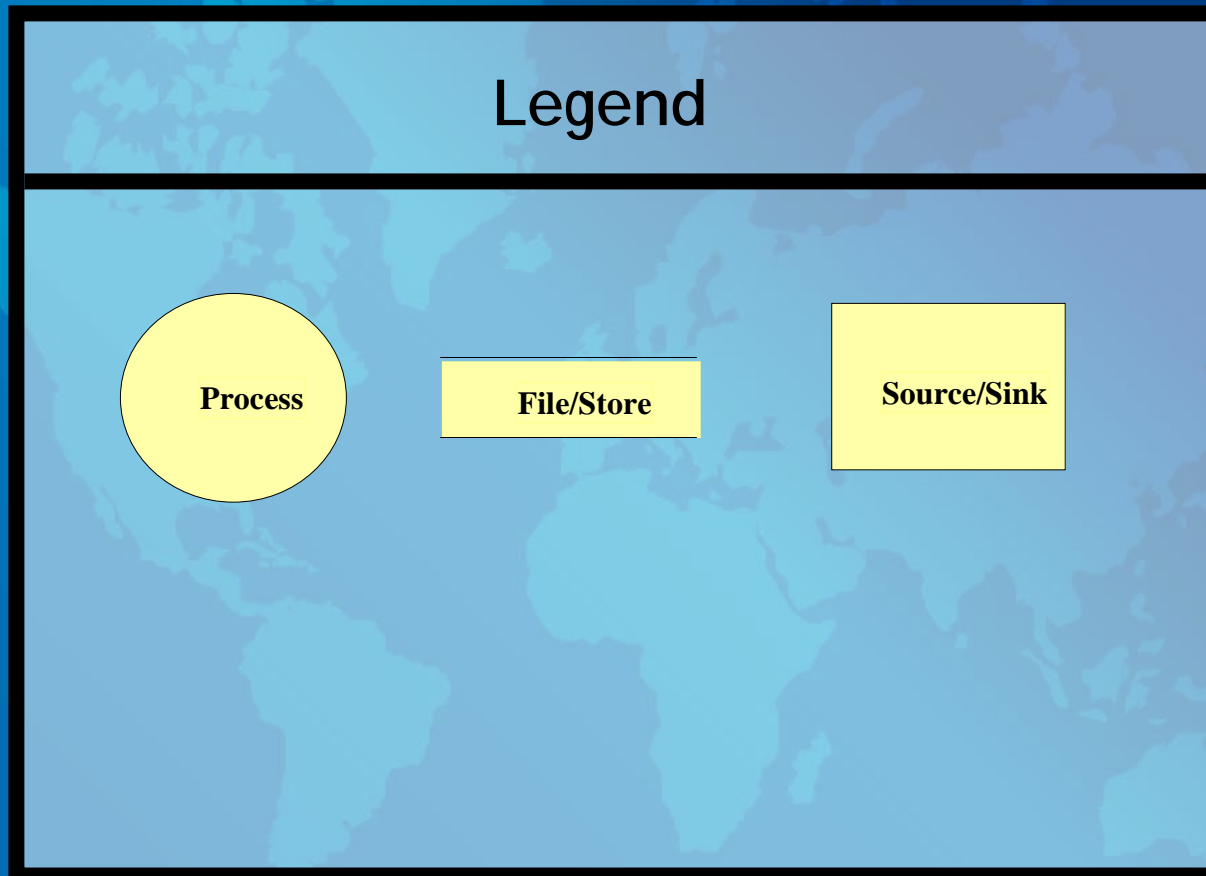
Team SKYNET

- Kevin Fealey Team Leader
- Heimdall Imbert Systems Administrator
- Stephanie Maloney Documentarian
- Trevor P. March Webmaster
- Andrew Warner Systems Analyst

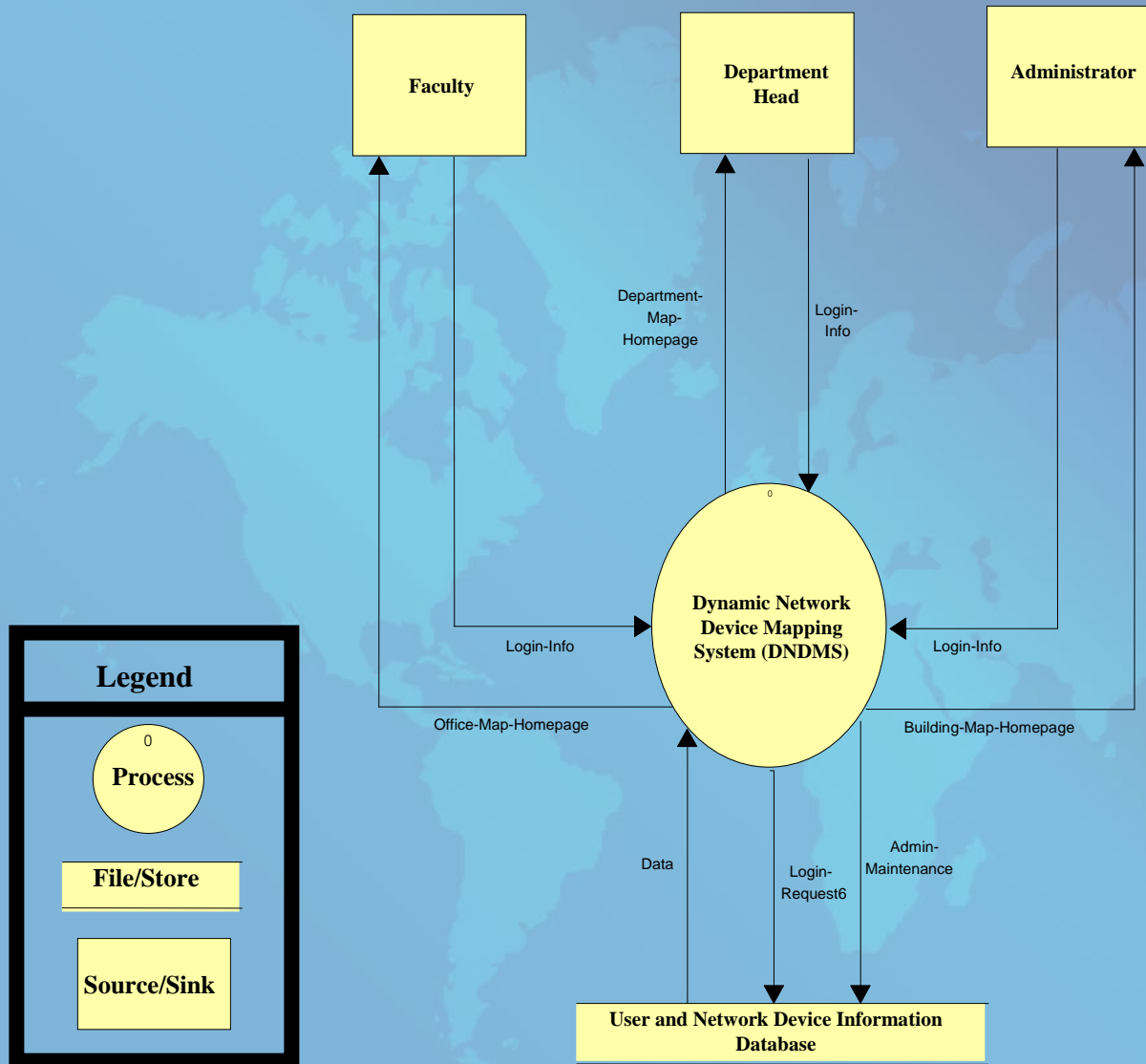
Problem Definition

- Current methods are inefficient
- Information should be obtained digitally
- Data accessible from anywhere
- Web application is required
- Digital map labeling all network devices
- Should display wired and wireless components

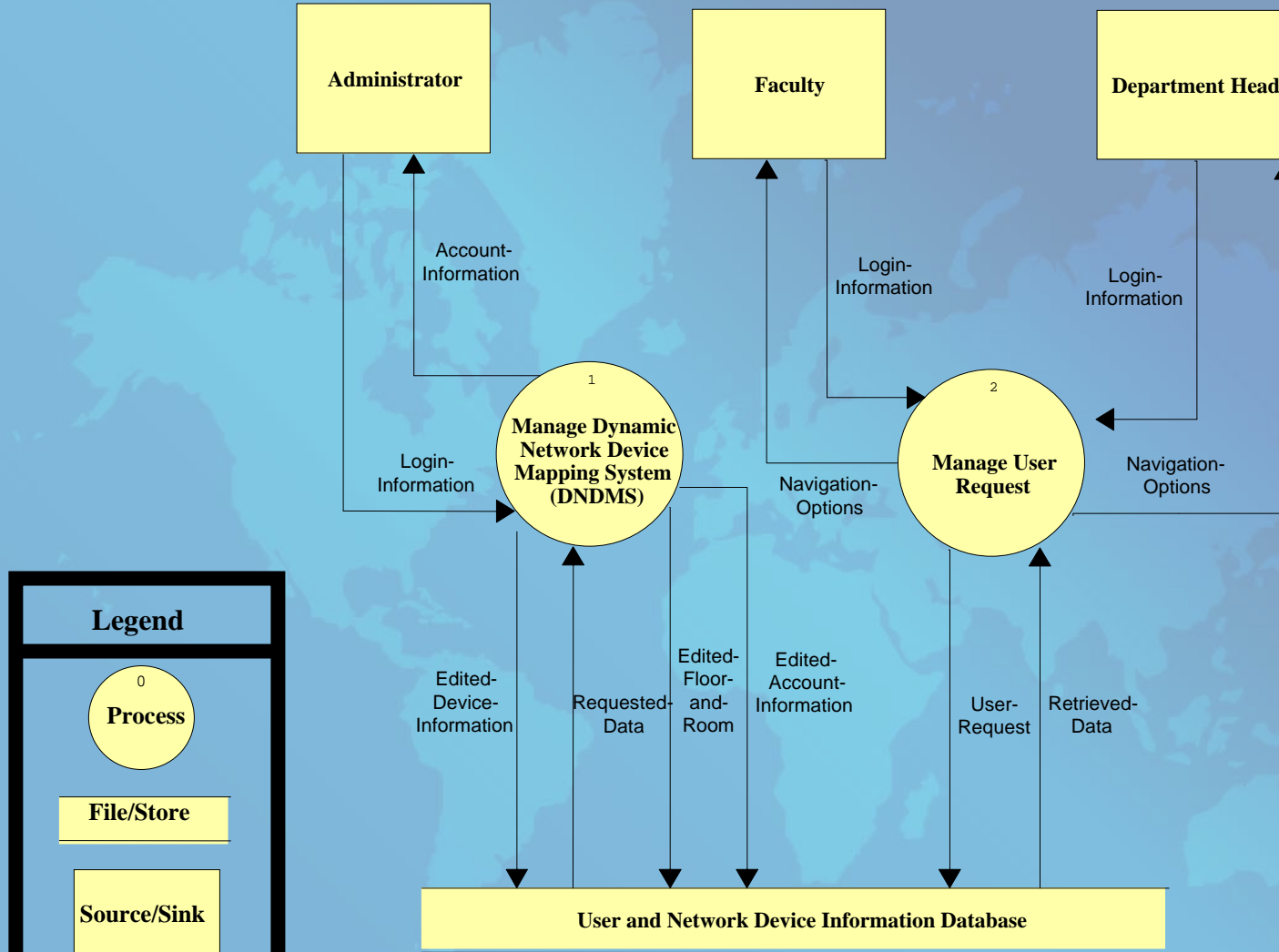
Data Flow Diagrams (DFDs)



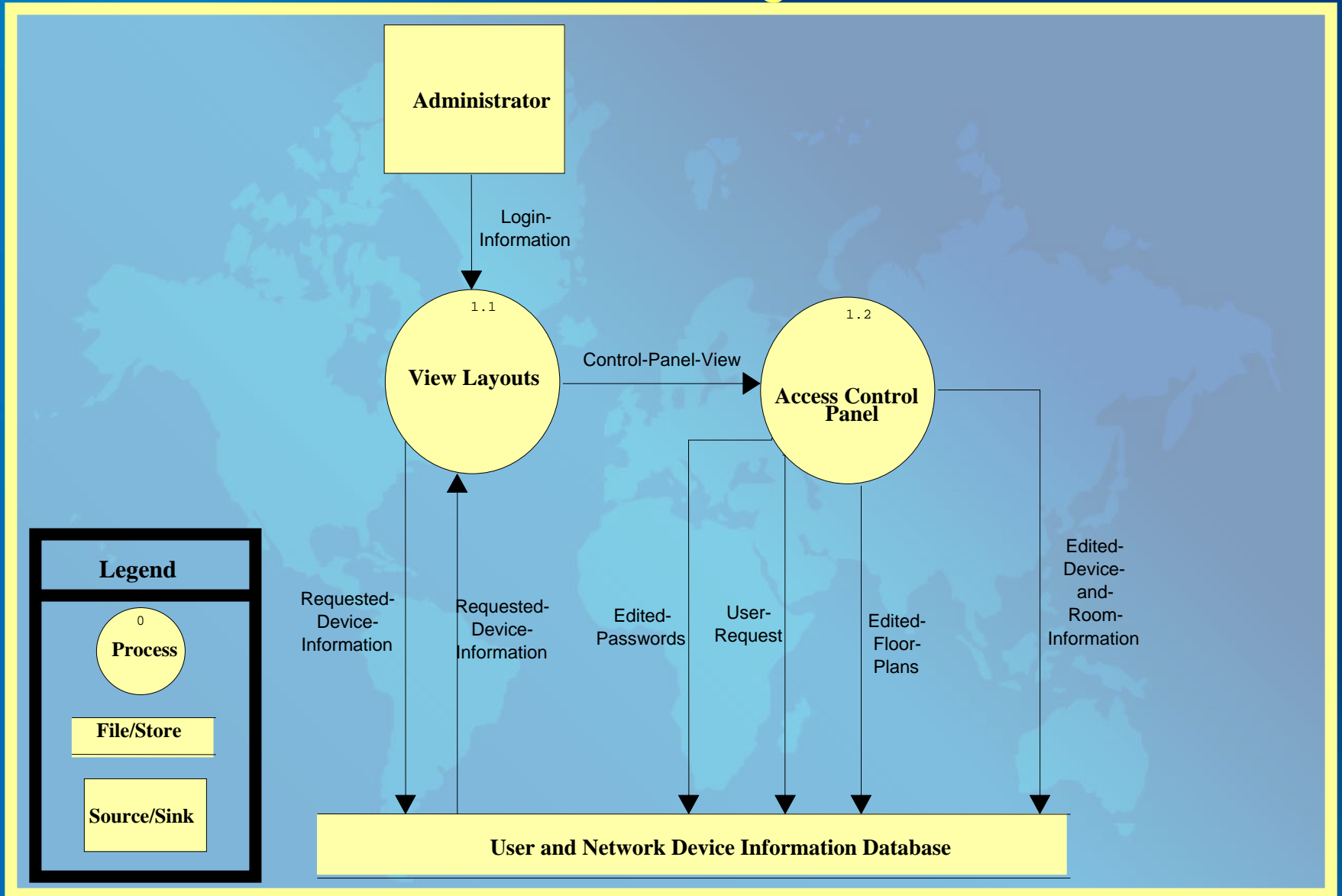
Context Diagram



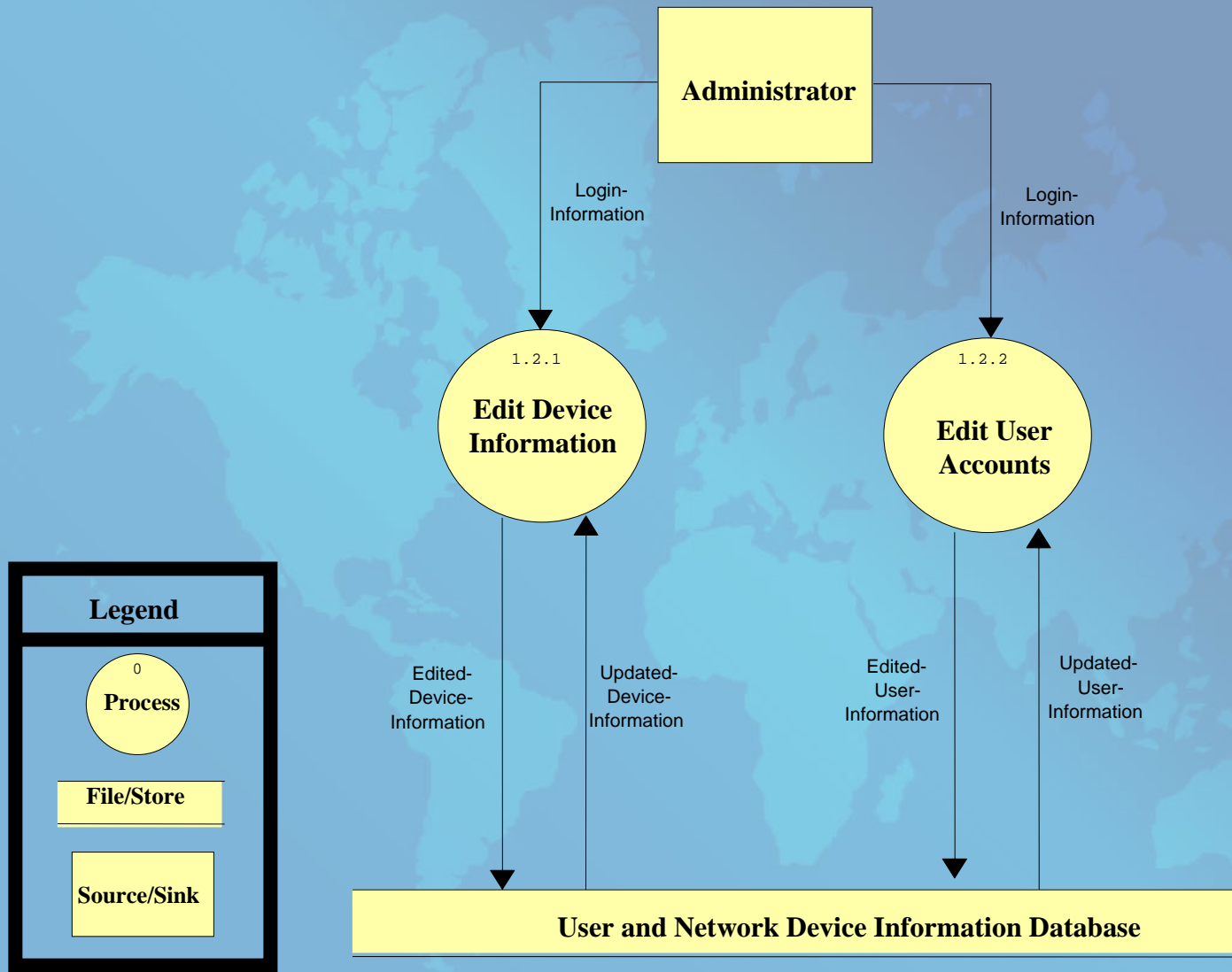
Level 0 Diagram



Level 1 Diagram



Level 2 Diagram



Use Case: Administrator

- all functions available to them
- view floor maps of Roger Bacon and Morrell
- can zoom map to room level
- make changes to current device inventory
- search by MAC, serial number, IP
- add and remove users

Use Case: Department Head

- view floor maps of their department
- can zoom map to room level

Use Case: Faculty/Staff

- view floor maps of their office
- view location of available printers
- can zoom map to office level

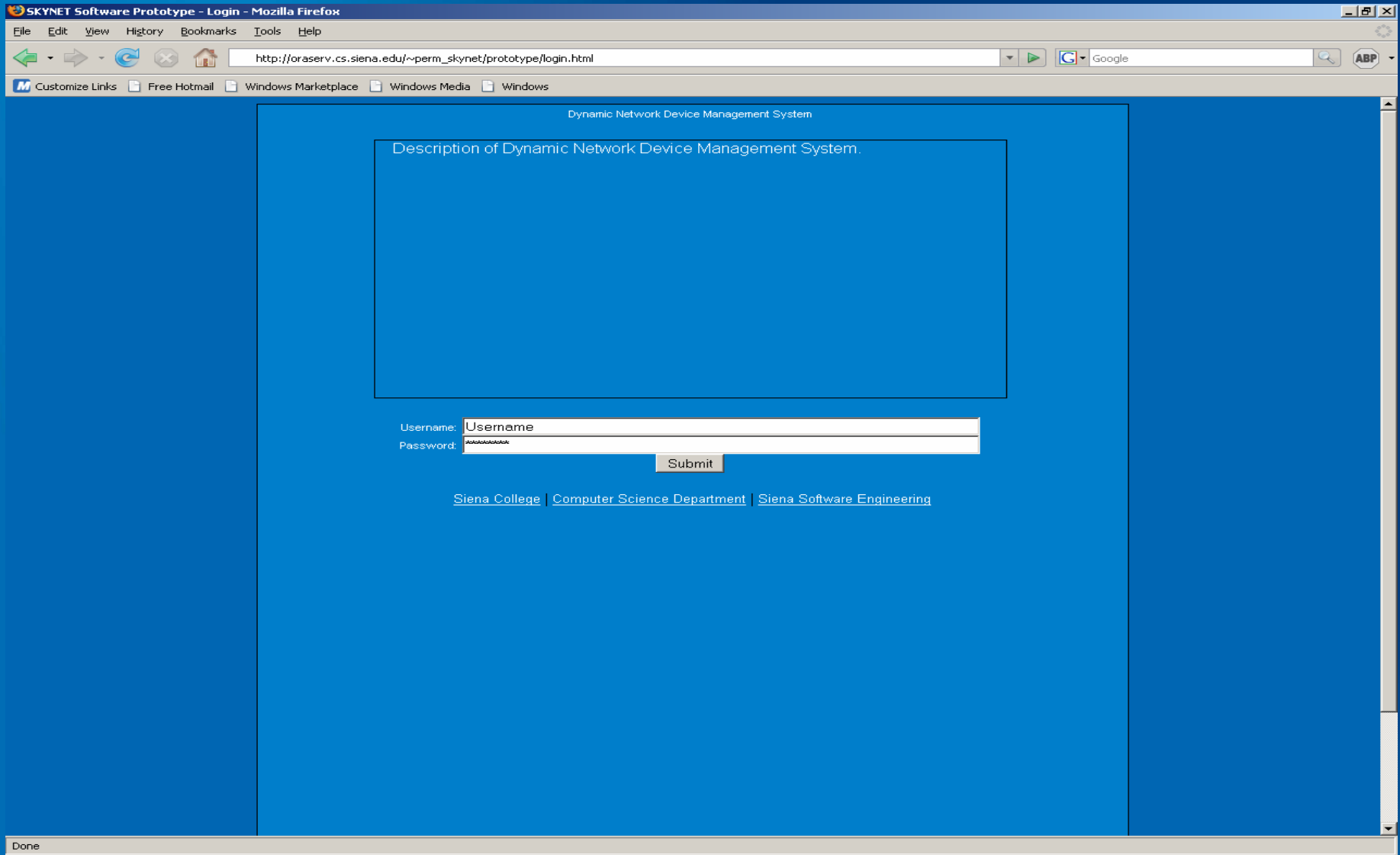
Functional Requirements Inventory: Administrator

- Login Screen
- Welcome Screen
- Control Panel
- User Control Panel
- User Permissions Control Panel

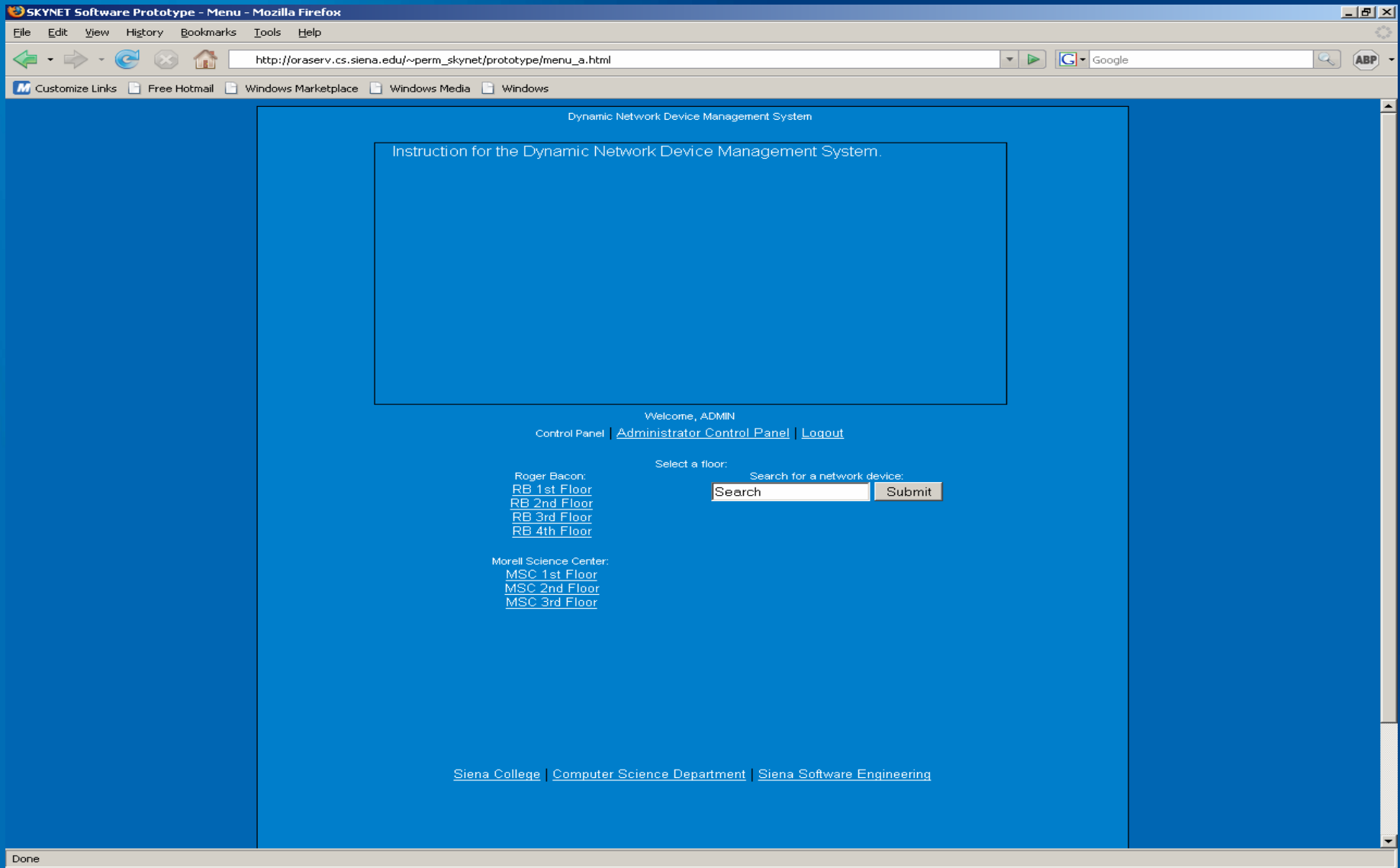
Functional Requirements Inventory: Administrator (cont.)

- Room Notes
- Floor Plan
- Room Layout
- Search Screen

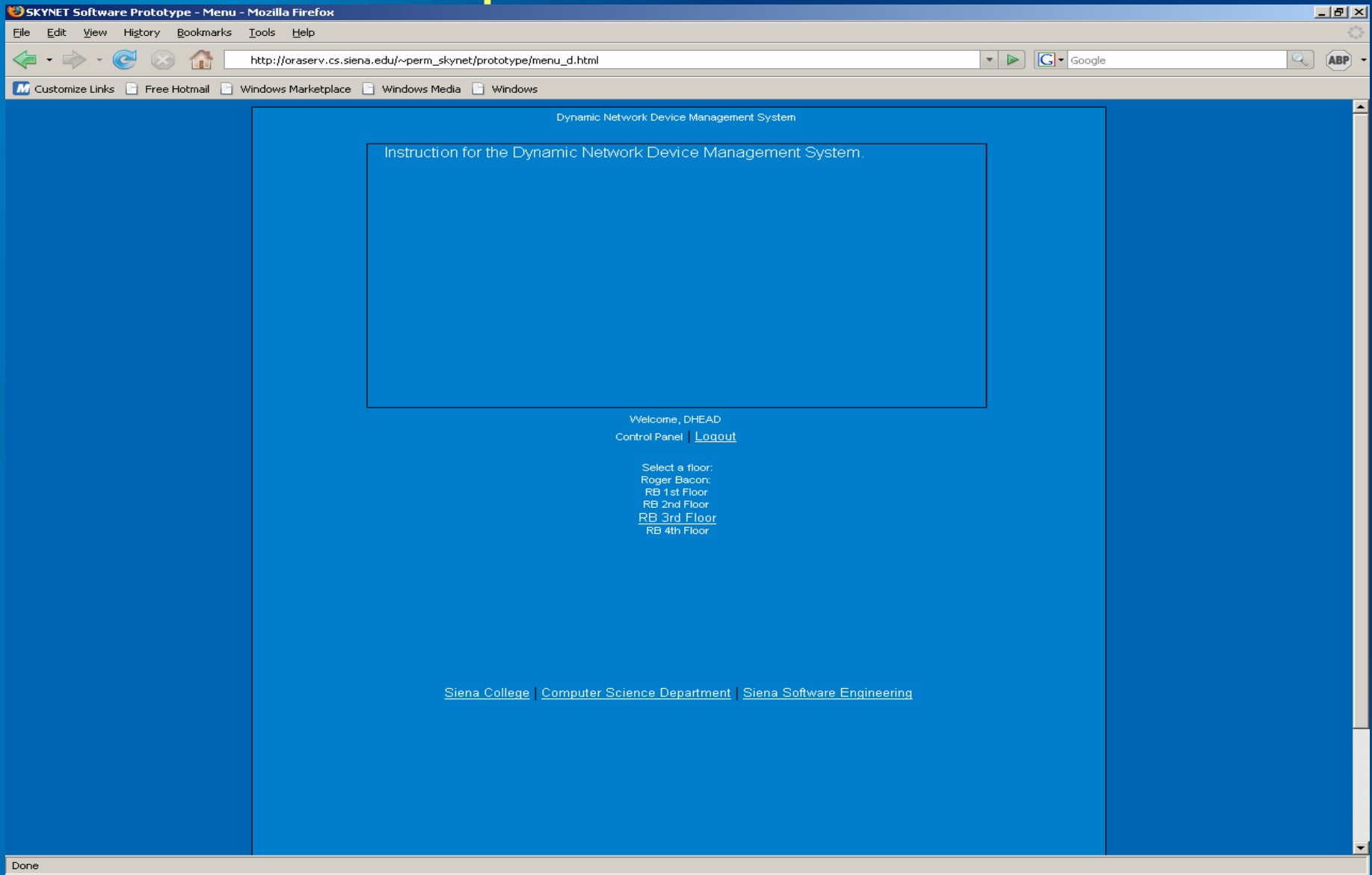
DNDMS: Login Screen (all users)



DNDMS: Admin Main Menu



DNDMS: Department Head Main Menu



DNDMS: Administrator Floor Plan

SKYNET Software Prototype - Floor Plan - Mozilla Firefox

File Edit View History Bookmarks Tools Help

http://oraserv.cs.siena.edu/~perm_skyenet/prototype/floor_a.html

Customize Links Free Hotmail Windows Marketplace Windows Media Windows

Dynamic Network Device Management System

Description of Floor X.

Welcome, ADMIN

[Control Panel](#) | [Administrator Control Panel](#) | [Logout](#)

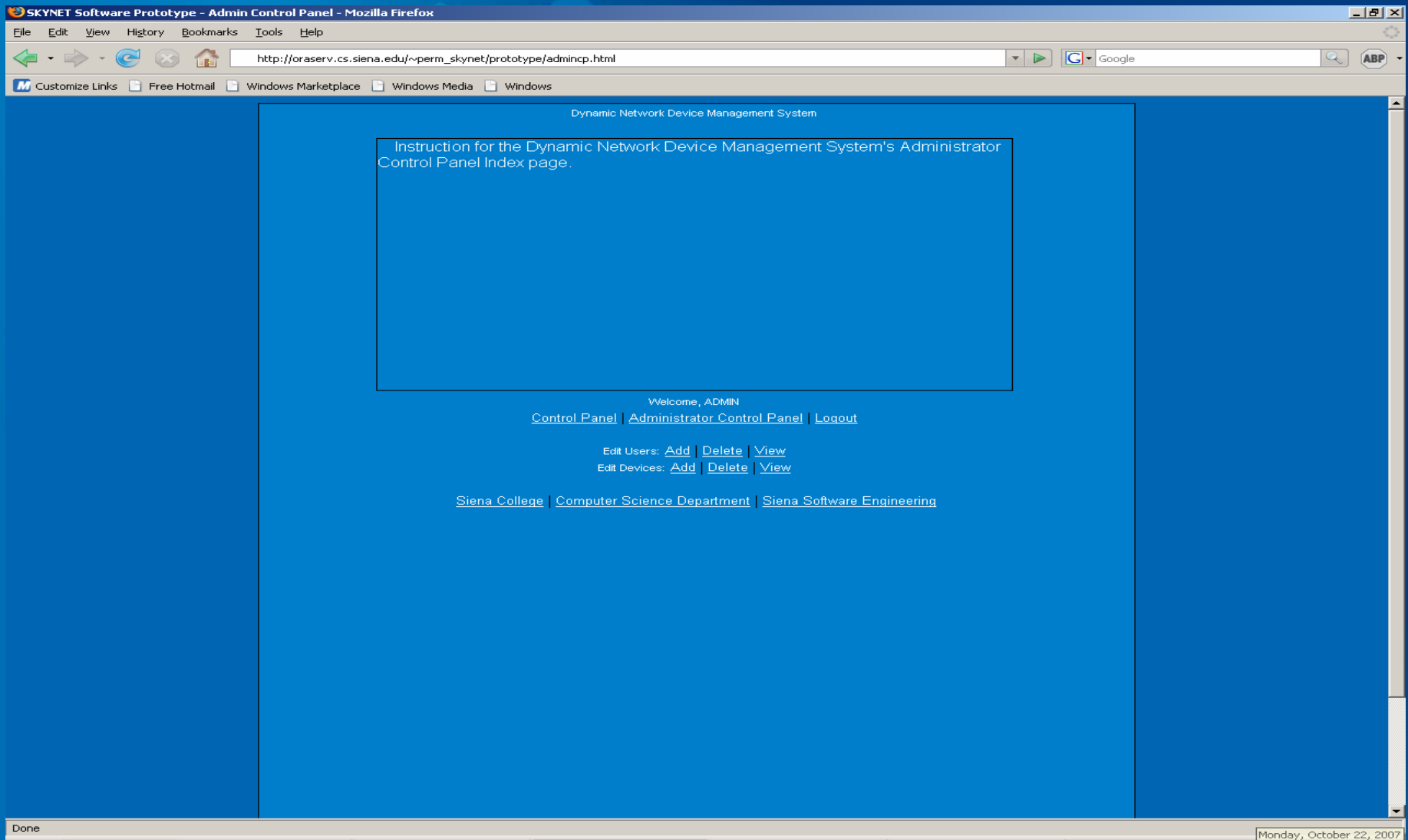
Current Floor: Roger Bacon, 3rd Floor

Please select a new floor:

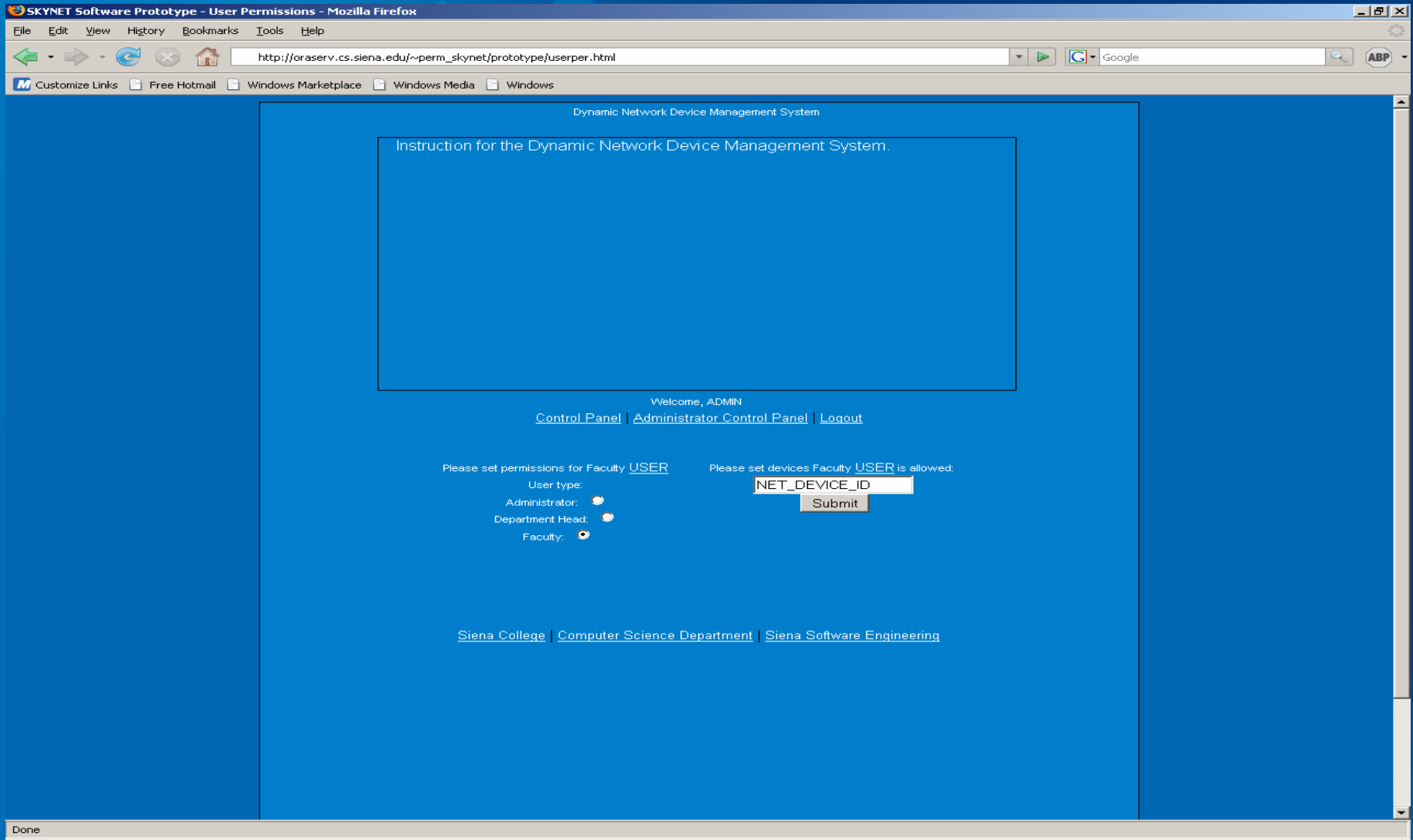
[Siena College](#) | [Computer Science Department](#) | [Siena Software Engineering](#)

Done

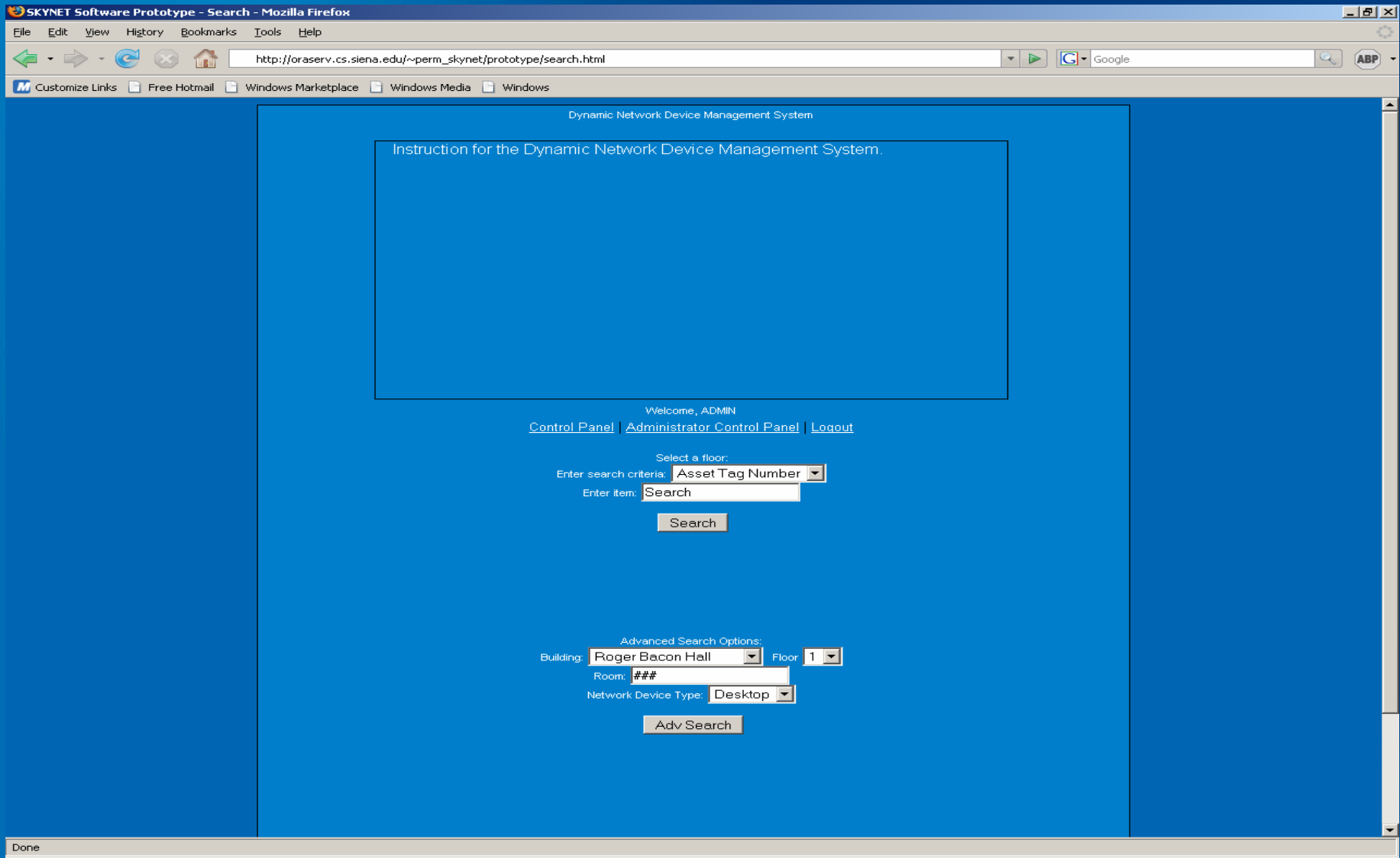
DNDMS: Administrator Control Panel



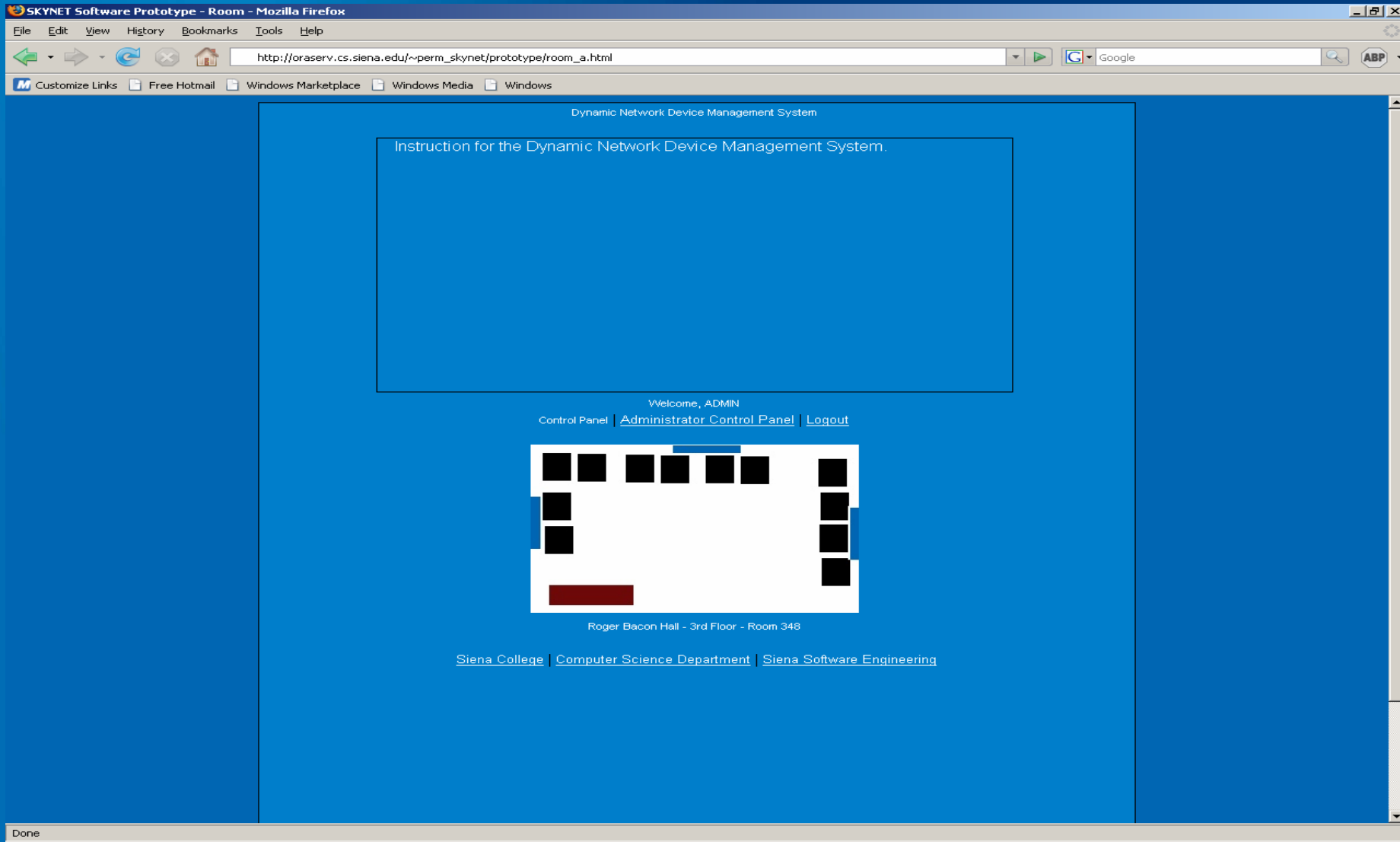
DNDMS: Administrator Control Panel (2)



DNDMS: Administrator Search Page

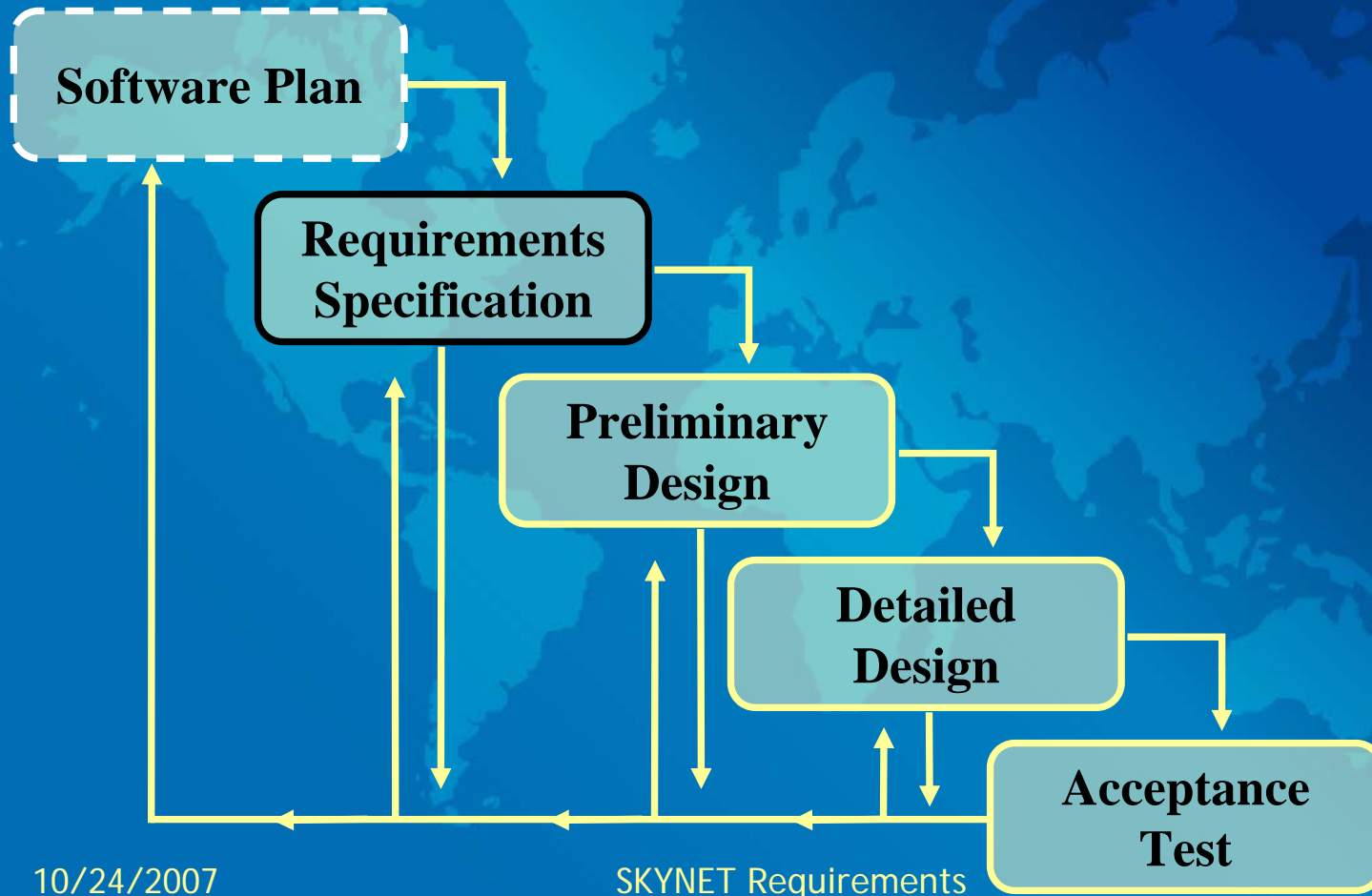


DNDMS: Room Level View (all users)

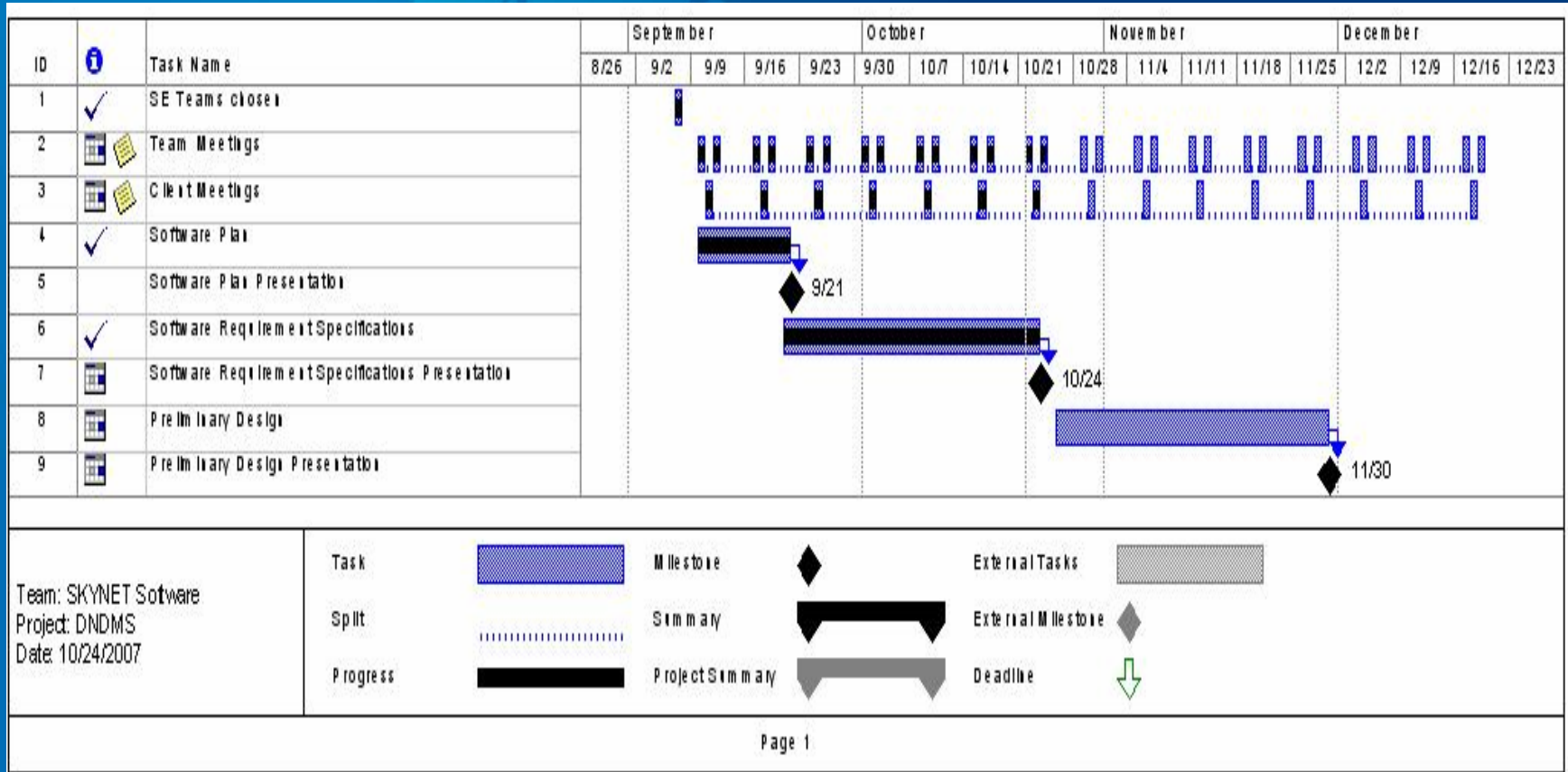


Waterfall Model

(Linear Sequential Model)



Timeline



Supporting Documentation

- Requirements Specification - Presentation: October 24, 2007
- Preliminary Design - Presentation: November 28, 2007
- Detailed Design - Spring 2008
- Acceptance Test - Spring 2008

Summary



Any Questions?