

Environmental Monitoring System

Acceptance Test

by

SaintSoft

Welcome

Mr. Kenneth Swarner

Computer Science System

Administrator, Siena College

&

Dr. Timoth Lederman

Professor of Computer Science,

Siena College

SaintSoft Team Organization

- David Moore – *Team Leader*
- Hannah Palmer – *Project Manager*
- Daniel Schuldt – *Development Manager*
- Liubov Mikhailova – *Development Engineer*
- Christian Damberg – *Testing Manager*
- Tina Ting – *Testing Engineer*

Agenda

- Introduction
 - *David Moore*
- Acceptance Test Results
 - *David Moore*
- Testing Results
 - *Tina Ting*
- Demonstration
 - *Hannah Palmer*
- Deliverables and Conclusion
 - *Christian Damberg*

Acceptance Test Results

Acceptance Test Results

➤ Login screen

- can the user log in
- does the forget password link work
- can the user register if they are a new user
- is the current news being displayed
- does the more news link work

Acceptance Results Continued

- Preference screen
 - can all the fields be filled in
 - do the submit and cancel buttons work properly
- Initial screen
 - does the location and IP address display correctly
 - can the user view their personal profile
 - can the user log out
 - does the register sensor link work

Acceptance Results Continued

- Register sensor screen
 - can all the fields be filled in
 - do the OS and IP fields auto fill
 - do the submit and cancel buttons work properly

Acceptance Results Continued

➤ Monitored user screen

- does the location and IP address display correctly
- can the user view their personal profile
- can the user log out
- do the correct sensor(s) show up on the screen
- can the alert history be viewed for each sensor
- can the device options be viewed for each sensor
- does the current sensor information load
- does the refresh devices link work
- can the user register or delete a sensor

Acceptance Results Continued

➤ Remote user screen

- does the location and IP address display correctly
- can the user log out
- do the correct sensor show up on the screen
- can the alert history be viewed for each sensor
- does the current sensor information load
- does the refresh devices link work
- can the user register or delete a sensor

Acceptance Results Continued

- Sensor options screen
 - can the threshold be changed
 - can the sensor be enabled and disabled
 - do the submit and cancel buttons work
- View alert screen
 - do the alerts show up
- User preference screen
 - can the user change their account information
 - can the user change their contact information
 - can the user change their notification information

Testing Results

Unit Test Results

- The Unit Test is designed to test every aspect of our Software, from the GUI to simple data entry to overall functionality.
- Our Unit Tests, based on a pass/fail scale, have passed for all testable criteria.
- The project was successfully tested for data integration between pages.

Sample Unit Test

- Remote User -

Unit Test: 1.5 Welcome Screen (Remote User)

ID 5.#	What is being tested:	Tested for:	Expected Outcome:	Pass or Fail:	Comments:
1	User accessing Welcome screen	Does it load?	Page loads and it will display user name, IP address, current status, number of locations, sensors, and the last login date	Pass	Page displays every information that we expect
2	User clicks on the Home button	Does it work?	Welcome page will display	Pass	Page loads normally
3	User clicks on the Location button	Does it work?	Location page will display	Pass	Page loads normally
4	User clicks on the Add Device button	Does it work?	Add Device page will display	Pass	Page loads normally
5	User clicks on the Log Off button	Does it work?	User will log out of the system and the login page will display	Pass	User log out and log in page display

Sample Unit Test

- Sensored User -

Unit Test: 2.8 Device Information Screen

ID 8.#	What is being tested:	Tested for:	Expected Outcome:	Pass or Fail:	Comments:
1	User accessing Device Information Screen	Does it load?	Page loads with all the device information	Pass	Page display with all the information that we expect
2	User clicks on the Home button	Does it work?	Welcome page display	Pass	Page display
3	User clicks on the Edit Profile button	Does it work?	User Profile page display	Pass	Page display
4	User clicks on the Location button	Does it work?	The Location page display, if user have added a device, it will show the location of the device, otherwise it will show that user have not add a device yet	Pass	Page display with information
5	User clicks on the Edit Device button	Does it work?	The Device/ Location Management page display with information	Pass	Page display with information
6	User clicks on the Log Off	Does it work?	User will get log off and the log in page will display	Pass	User get log off and the log in page display

Sample Unit Test

- Administrator -

Unit Test: 3.2 Query Results Screen

ID 3.2.#	What is being tested:	Tested for:	Expected Outcome:	Pass or Fail:	Comments:
1	Admin performs a search and is brought to the Query Results page	Does it load?	Page loads and displays the search results with the correct fields	Pass	Expected results are displayed
2	Admin sorts the results ascending	Does it work?	The results sort correctly	Pass	Expected results are displayed
3	Admin sorts the results descending	Does it work?	The results sort correctly	Pass	Expected results are displayed
4	Admin clicks the edit button	Does it work?	The User Profile page is displayed	Pass	Page loads

Demonstration of the Environmental Monitoring System Software

Demonstration

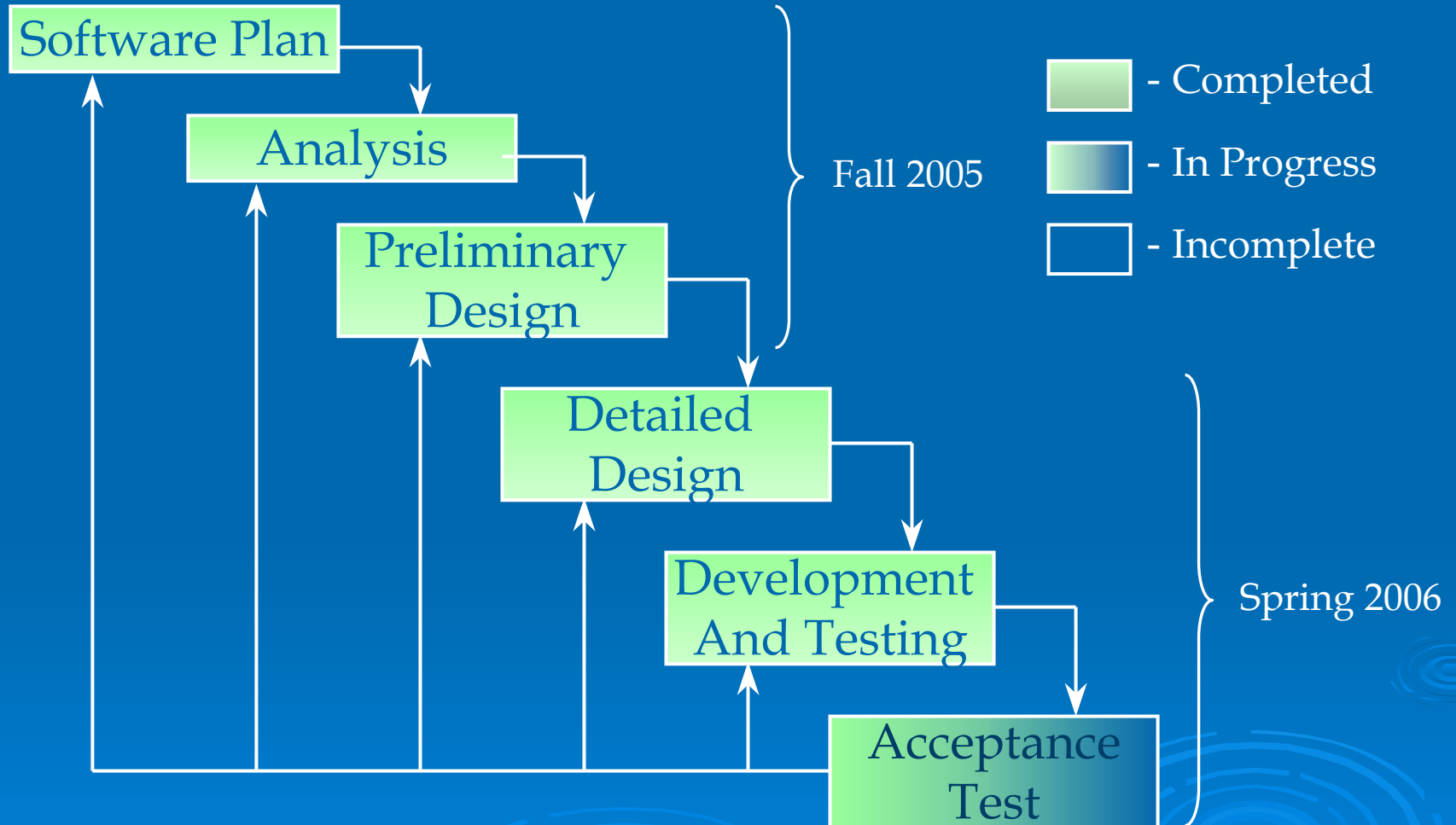
Environmental Monitoring System

Deliverables and Conclusion

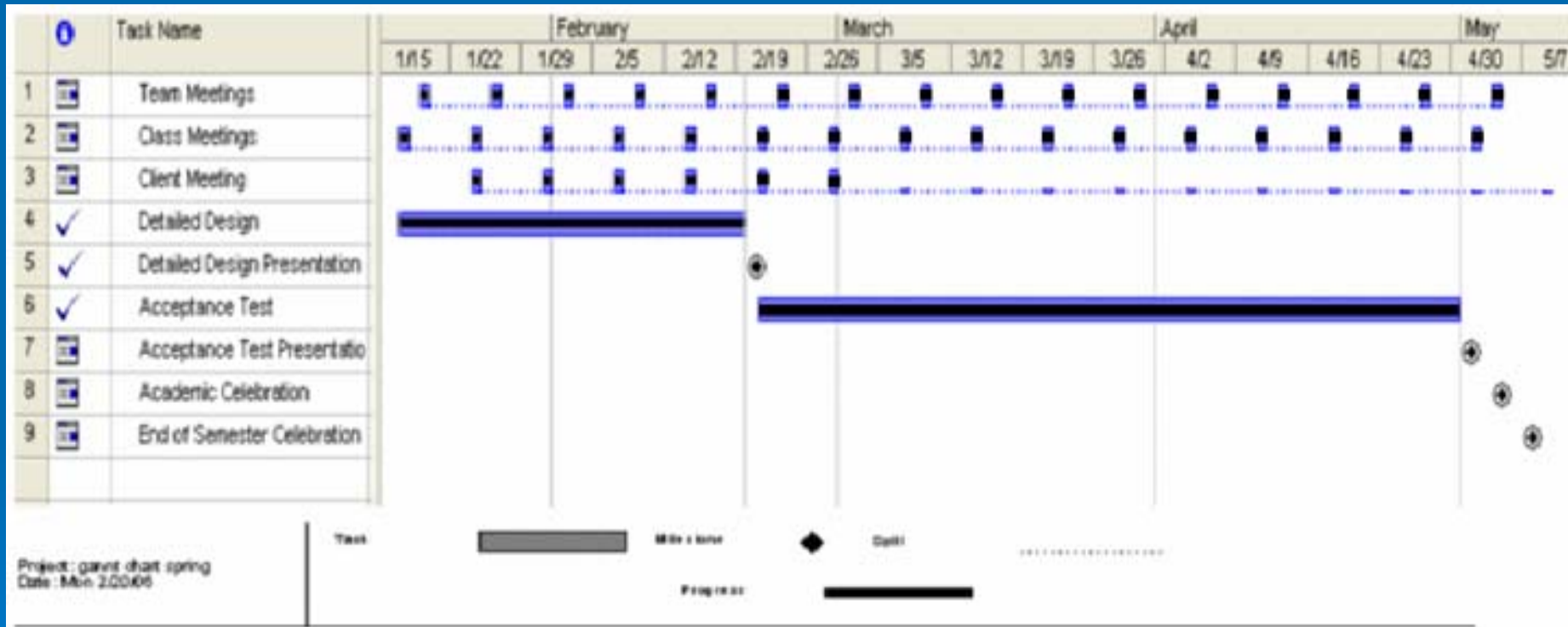
Deliverables

- The Deliverables for this project will include:
 - A hard copy of the Acceptance Test document
 - A compact disk including:
 - The Acceptance Test document
 - Test Plan & Results
 - The Project Website
 - Source Listings
 - Our Team Website
 - PowerPoint Presentation

Project Plan



Gantt Chart



Thank You!

Any Questions?