

LEAP

Lightweight E-Book Access Platform

Project Update

Presented By:

Ω Tech

Revision 3.65
Date 3/6/15

Team Members:

Garrett Allen – Team Leader
Damian Crisafulli - Webmaster
Josh McDonald - Database Administrator
Amar Mian – Lead Programmer
Justin Rousseau - Web Developer

Prepared For:

Jen Cannell – Questar III
J'aimé Pfeiffer – Capital Region BOCES

Table of Contents

1. Project Overview and Summary	5
2. User Case Narratives.....	6
2.1 Younger Students	6
2.2 Older Students	6
2.3 Teachers	6
2.4 Administrators.....	7
2.5 Super Administrator.....	8
3. UML Use Case Diagram.....	10
3.1 UML Use Case Legend.....	10
3.2 UML Use Case Diagram.....	11
4. UML Deployment Diagram.....	12
4.1 UML Deployment Diagram Legend.....	12
4.2 UML Deployment Diagram.....	13
5. UML Activity Diagram.....	14
5.1 UML Activity Diagram Legend.....	14
5.2 Activity Diagram: Login.....	15
5.3 Activity Diagram: Display and Checkout.....	16
6. Website Map.....	17
6.1 Website Legend	17
6.2 Website Map.....	18
7. Data Flow Diagrams	19
7.1 Data Flow Legend.....	19
7.2 Context Diagram.....	20
7.3 Level 0 Diagram	21
7.3.1 Part 1 of the Level 0 Diagram.....	21
7.3.2 Part 2 of the Level 0 Diagram.....	22
7.4 Level 1 Diagrams	23
7.4.1 Login	23
7.4.2 Display E-books.....	24
7.4.3 Move to Checkout.....	25

- 7.4.4 Password Reset 26
- 7.4.5 Modify Accounts 27
- 7.4.6 Modify Third-party Website Information 28
- 7.4.7 View Statistics 29
- 7.5 Level 2 30
 - 7.5.1 Display E-books (2.3) 30
 - 7.5.2 Edit Account (5.5)..... 31
- 8. Functional Requirements Inventory..... 32
 - 8.1 Younger Students..... 32
 - 8.2 Older Students..... 32
 - 8.3 Teachers 32
 - 8.4 Administrators..... 33
 - 8.5 Super Administrator..... 33
- 9. Non-Functional Requirements Inventory 34
- 10. Logical Data Dictionary..... 35
 - 10.1 Users Data Dictionary..... 35
 - 10.2 Third Party websites Data Dictionary..... 36
 - 10.3 E-books Data Dictionary..... 37
- 11. ER Diagram 38
 - 11.1 ER Diagram for Users Table..... 38
 - 11.2 ER Diagram for Third Party Websites and Books Tables 39
- 12. User Displays 40
 - 12.1 Login 40
 - 12.2 Display 42
- 13. Testing Requirements 44
- 14. Testing Results..... 45
 - 14.1 Log in Testing 45
 - 14.2 Display Testing: Chrome 47
 - 14.3 Display Testing: Safari 50
 - 14.5 Display Testing: Internet Explorer..... 56
- 15. Future Sprints..... 59

16. Appendices..... 60

 16.1 Appendix A: Cross Reference Index 60

 16.2 Appendix B: Source of Information 62

 16.3 Appendix C: Glossary of Terms 63

 16.4 Appendix D: Timeline 64

 16.5 Appendix E: Link for Code..... 64

1. Project Overview and Summary

The clients, Jaimé Phiffer of Capital Region BOCES and Jen Cannell of Questar III need a simple and easy to use central login platform in order to access e-books from all vendors and publishers. All users; younger students (grades K - 6), older students (grades 7 - 12), teachers, administrators, and the super administrator can view and filter e-books available to them. To checkout e-books, all users will be directed to the third-party websites. Older students, teachers, administrators, and the super administrator can reset their passwords. Teachers can also modify student accounts and administrators can also modify teacher accounts. The super administrator can modify other administrator accounts. The goal of LEAP is to make e-book management simpler for students and faculty by providing an easy to use portal to read e-books and manage their availability.

2. User Case Narratives

2.1 Younger Students

A younger student will navigate to the Lightweight E-book Access Platform (LEAP) login page. The younger student will attempt to login. If the younger student fails to login, the younger student will be brought back to the login page with an error message stating a wrong username or password was entered. After the younger student successfully logs in, a list of all available e-books for the younger student will be displayed. The e-books displayed will be populated according to the school that the younger student attends, the younger student's grade level, and any additional e-books the younger student's teacher wants the younger student to have access to. The younger student can search and sort the e-books available to the younger student based on various e-book attributes such as name, grade level, publisher and genre. When the younger student clicks on the e-book, the younger student is taken to the third-party website where the e-book is located in order to checkout the e-book.

2.2 Older Students

An older student will navigate to the Lightweight E-book Access Platform (LEAP) login page. The older student will attempt to login. If the older student fails to login, the younger student will be brought back to the login page with an error message stating a wrong username or password was entered. The older student can choose to reset their password and be prompted to enter their username. Then the older student will follow the password reset process. The password reset process entails entering the student's email so that LEAP can email that student a link to reset the student's password. After the older student successfully logs in, a list of all available e-books for the older student will be displayed. The e-books displayed will be populated according to the school that the older student attends, the older student's grade level, and any additional e-books the older student's teacher wants the older student to have access to. The older student can search and sort the e-books available to the younger student based on various e-book attributes such as name, grade level, publisher and genre. When the older student clicks on the e-book, the older student is taken to the third-party website where the e-book is located in order to checkout the e-book.

2.3 Teachers

A teacher will navigate to Lightweight E-book Access Platform (LEAP) login page and attempt to login. If the teacher fails to login, the teacher will be brought back to the login page with an error message stating a wrong username or password was entered. The teacher can choose to reset their password and be prompted to enter their username. The teacher will then follow our password reset process. The password reset process entails entering the teacher's email so that LEAP can email that teacher a link to reset the teacher's password. After the teacher successfully logs in, the screen will display all the e-books the teacher has access to, including teacher-specific e-books such as instructor manuals and answer booklets. The teacher can choose to filter books based on different search criteria like appropriate grade level, genre, or subject. The teacher can choose to click on an e-book and be brought to the third-party website where the e-book is located in order to checkout the e-book. The teacher will have access to a user management area where the teacher can modify or view account settings for the teacher's

students. These settings will include the student's password and the e-books the student has access to.

2.4 Administrators

An administrator will navigate to Lightweight E-book Access Platform (LEAP) login page and attempt to login. If the administrator fails to login, the administrator will be brought back to the login page with an error message stating a wrong username or password was entered. The administrator can choose to reset their password and be prompted to enter their username. The administrator will then follow our password reset process. The password reset process entails entering the administrator's email so that LEAP can email that administrator a link to reset the administrator's password. After the administrator successfully logs in, the screen will display all the e-books the administrator has access to, including administrator-specific e-books such as instructor manuals and answer booklets. The administrator can choose to filter books based on different search criteria like appropriate grade level, genre, or subject. The administrator can choose to click on an e-book and be brought to the third-party website where the e-book is located in order to checkout the e-book. The administrator will have access to a user management area where the administrator can modify or view account settings for the administrator's students. These settings will include the student's password and the e-books the student has access to.

In addition the administrator can go into settings and choose to edit account information for both teachers and students, modify third-party website settings, and view statistics. When the administrator chooses to edit accounts, the administrator will be prompted to either create a new account or edit an existing account. If the administrator chooses to create a new account, the administrator will be directed to a form to add a new teacher or student. Once the administrator is finished filling out the form, the administrator can choose done or cancel. If done is chosen, the form will be uploaded to the server. If cancel is chosen the administrator will be directed back to administrator settings. If the administrator chooses to edit an existing teacher or student account, the administrator will be directed to a search bar where the administrator can find the person and click the edit button in order to edit the account. When the administrator is editing a pre-existing user and the administrator is finished filling out the form, the administrator can choose done or cancel. If done is chosen, the form will be uploaded to the server. If cancel is chosen the administrator will be directed back to administrator settings. If the administrator chooses to modify the third-party website settings, the administrator will be directed to a list of all of the current publishers and vendors. The administrator can choose to click on add a new publisher or vendor, or they can click the edit button located next to one of the publishers or vendors. If the administrator chooses to add a new publisher or vendor, they will be directed to fill out a form. When the administrator is finished filling out the form, the administrator can choose done or cancel. If done is chosen, the form will be uploaded to the server. If cancel is chosen the administrator will be directed back to the modify vendors and publishers page. If the administrator chooses to edit a publisher or vendor, they will fill out an edit form. When the administrator is finished filling out the form, the administrator can choose done or cancel. If done is chosen, the form will be uploaded to the server. If cancel is chosen the administrator will be directed back administrator settings. If the administrator chooses to view statistics, the administrator will be directed to the statistics page which will show statistics such as what books

was rented the most. If the administrator chooses scraper schedule, the administrator can modify the schedule for the scraper.

2.5 Super Administrator

The super administrator will navigate to Lightweight E-book Access Platform (LEAP) login page and attempt to login. If the super administrator fails to login, the super administrator will be brought back to the login page with an error message stating a wrong username or password was entered. The super administrator can choose to reset their password and be prompted to enter their username. The super administrator will then follow our password reset process. The password reset process entails entering the super administrator's email so that LEAP can email that super administrator a link to reset the super administrator's password. After the super administrator successfully logs in, the screen will display all the e-books the super administrator has access to, including super administrator-specific e-books such as instructor manuals and answer booklets. The super administrator can choose to filter books based on different search criteria like appropriate grade level, genre, or subject. The super administrator can choose to click on an e-book and be brought to the third-party website where the e-book is located in order to checkout the e-book. The super administrator will have access to a user management area where the super administrator can modify or view account settings for the super administrator's students. These settings will include the student's password and the e-books the student has access to.

In addition the super administrator can go into settings and choose to edit account information for both teachers and students, modify third-party website settings, and view statistics. When the super administrator chooses to edit accounts, the super administrator will be prompted to either create a new account or edit an existing account. If the super administrator chooses to create a new account, the super administrator will be directed to a form to add a new teacher or student. Once the super administrator is finished filling out the form, the super administrator can choose done or cancel. If done is chosen, the form will be uploaded to the server. If cancel is chosen the super administrator will be directed back to super administrator settings. If the super administrator chooses to edit an existing teacher or student account, the super administrator will be directed to a search bar where the super administrator can find the person and click the edit button in order to edit the account. When the super administrator is editing a pre-existing user and the super administrator is finished filling out the form, the super administrator can choose done or cancel. If done is chosen, the form will be uploaded to the server. If cancel is chosen the super administrator will be directed back to super administrator settings. If the super administrator chooses to modify the third-party website settings, the super administrator will be directed to a list of all of the current publishers and vendors. The super administrator can choose to click on add a new publisher or vendor, or they can click the edit button located next to one of the publishers or vendors. If the super administrator chooses to add a new publisher or vendor, they will be directed to fill out a form. When the super administrator is finished filling out the form, the super administrator can choose done or cancel. If done is chosen, the form will be uploaded to the server. If cancel is chosen the super administrator will be directed back to the modify vendors and publishers page. If the super administrator chooses to edit a publisher or vendor, they will fill out an edit form. When the super administrator is finished filling out the form, the super administrator can choose done or cancel. If done is

chosen, the form will be uploaded to the server. If cancel is chosen the super administrator will be directed back super administrator settings. If the super administrator chooses to view statistics, the super administrator will be directed to the statistics page which will show statistics such as what books was rented the most. If the administrator chooses scraper schedule, the administrator can modify the schedule for the scraper. The super administrator with the can also add, edit and delete administrator accounts.

3. UML Use Case Diagram

3.1 UML Use Case Legend



System Boundary - Represents the system; actors go on the outside of the boundary and scenarios go inside.



Actor - Actors can be human or non-human. Human actors can be found on the left side of the system and non-human actors can be found on the right side of the system. Actors interact with the system through scenarios.



Scenario - Processes that occur within the system and interact with actors.



Participation Line - Shows what scenarios an actor can interact with.

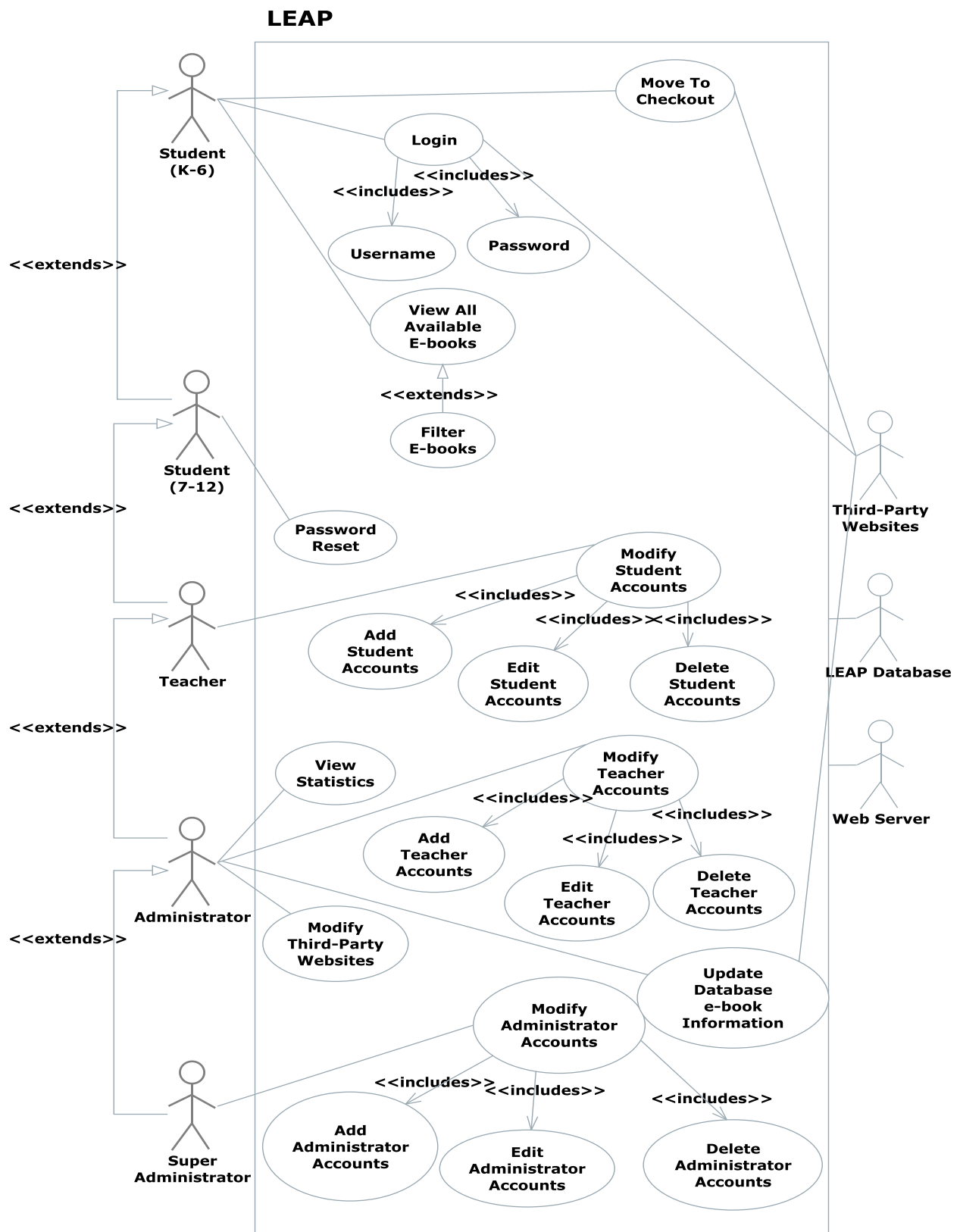


Inclusion Arrow - An arrow that points from one scenario to another scenario in order to show that something must be included for the scenario.



Inheritance Arrow - An arrow that points between two scenarios showing that one scenario inherits functionality from another. The scenario being pointed at is the parent.

3.2 UML Use Case Diagram



4. UML Deployment Diagram

4.1 UML Deployment Diagram Legend

<HTTP>

HTTP - The Hypertext Transfer Protocol is an application protocol for distributed, collaborative, hypermedia information system. HTTP is the foundation of data communication for the World Wide Web.

<SCP>

SCP- Securely transferring computers files between a local host and a remote host or between two remote hosts.

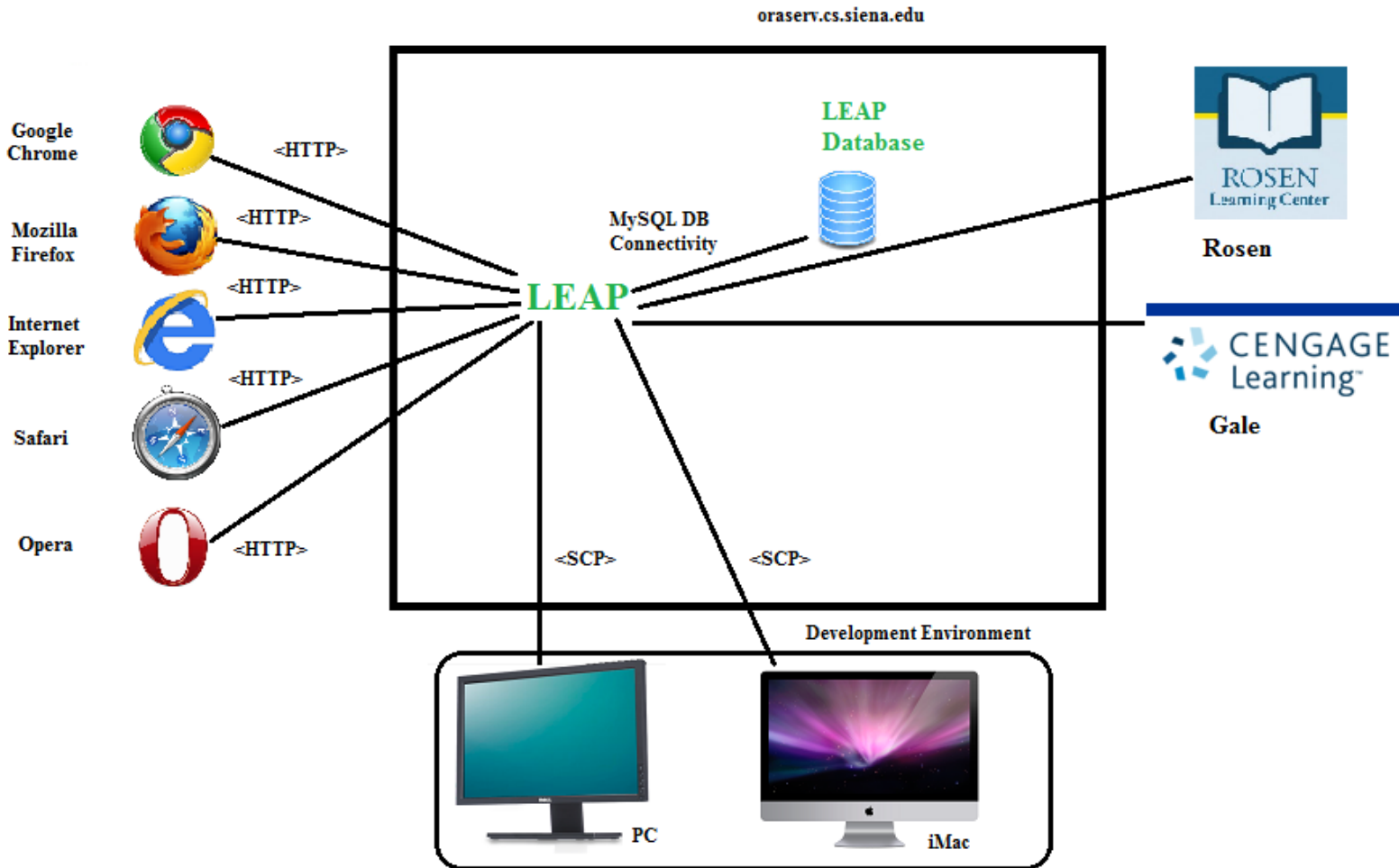


System Boundary- Represents what is within a system and what is outside of it.



Connection- Displays a relationship between boundaries.

4.2 UML Deployment Diagram



Physical Addresses:
PC: F8-B1-56-DA-B9-77
Mac: 40-6C-8F-19-C5-BC

5. UML Activity Diagram

5.1 UML Activity Diagram Legend



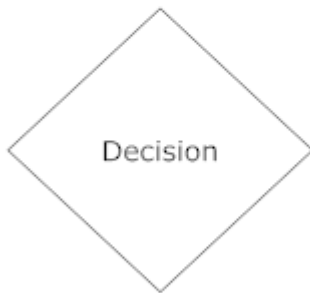
Initial Node - The initial node is the first node in the process. The initial node is the starting point for all movement.



Final Node - The final node is the last node in the process. When the activity flow has reached here, the process is over. There may be more than one final node.



Activity Node - Describes behaviors that will take place at this step, where activity is the behavior.

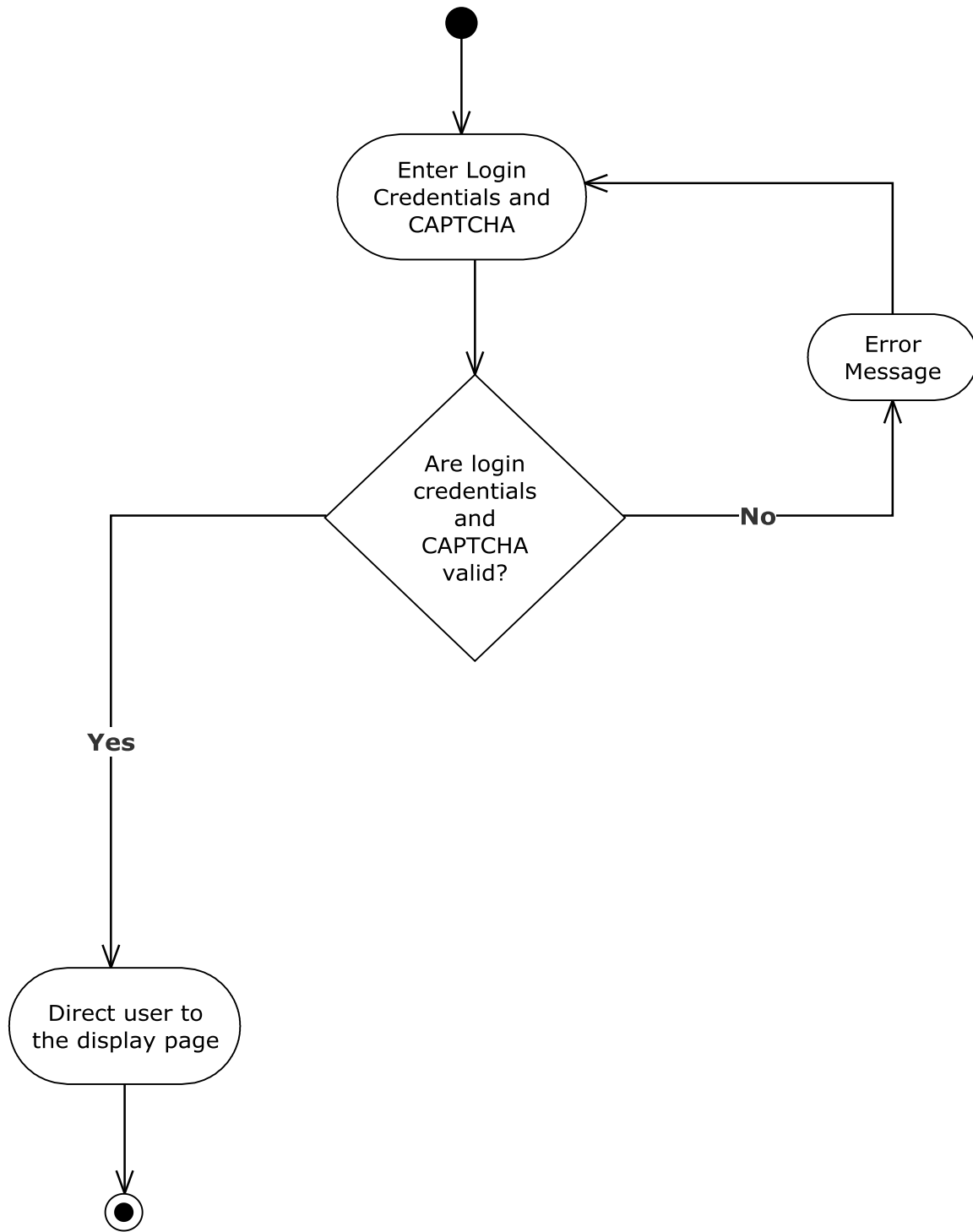


Decision Node - Takes an incoming edge and presents multiple outgoing edges based on the decision of the process. The decision is typically posed as a question.

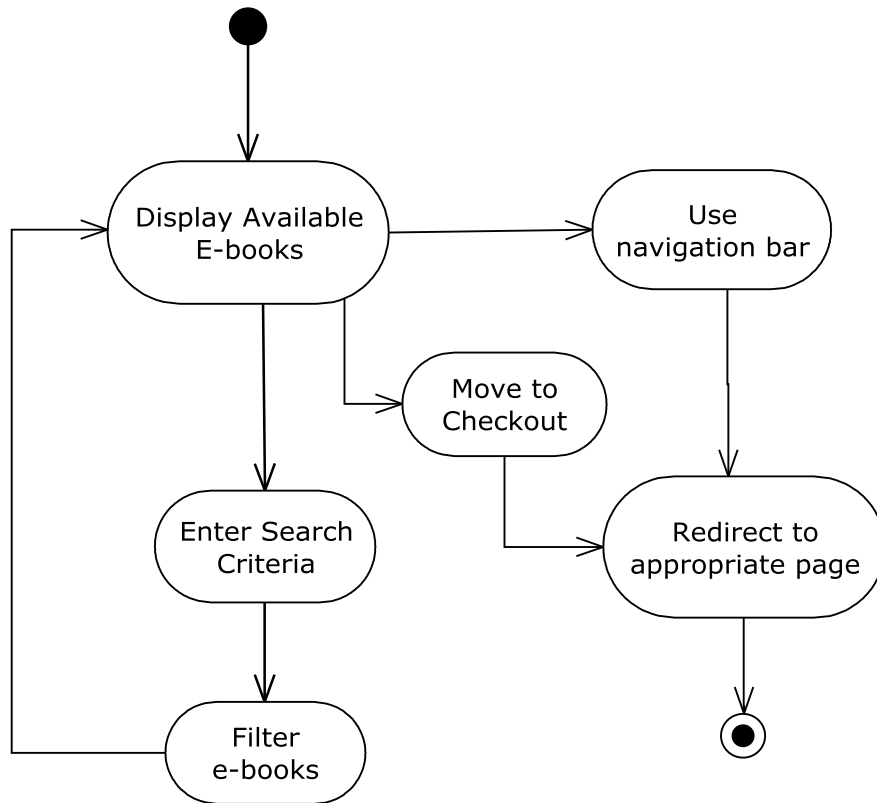


Flow - Shows the movement of action from one node to another.

5.2 Activity Diagram: Login



5.3 Activity Diagram: Display and Checkout



6. Website Map

6.1 Website Legend



Home - Represents the main page the user will see upon a successful login.



Form – Represents data fields which require user input.



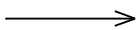
Page – Represents a web page within LEAP.



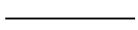
Script – Represents a script that is run.



Red Outlined Shapes – Represents work to be done in future sprints.

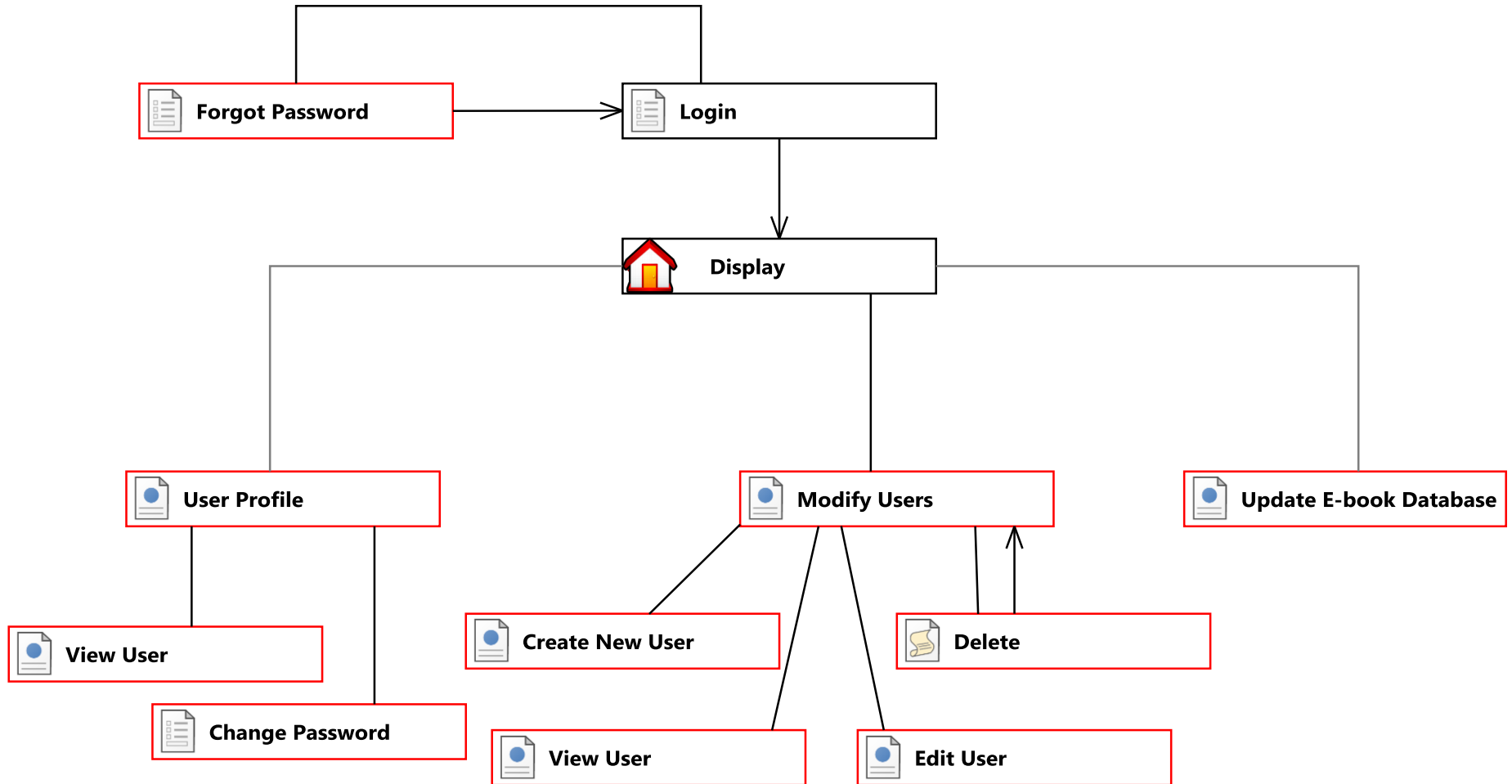


Page Redirect – represents a forced reroute to a new page depending on user interaction.



Link – Represents a page being accessible from another page.

6.2 Website Map



7. Data Flow Diagrams

7.1 Data Flow Legend



External entity - Contributes data or information to the system and also receives data or information back from the system.



Process - Transforms or manipulates data.

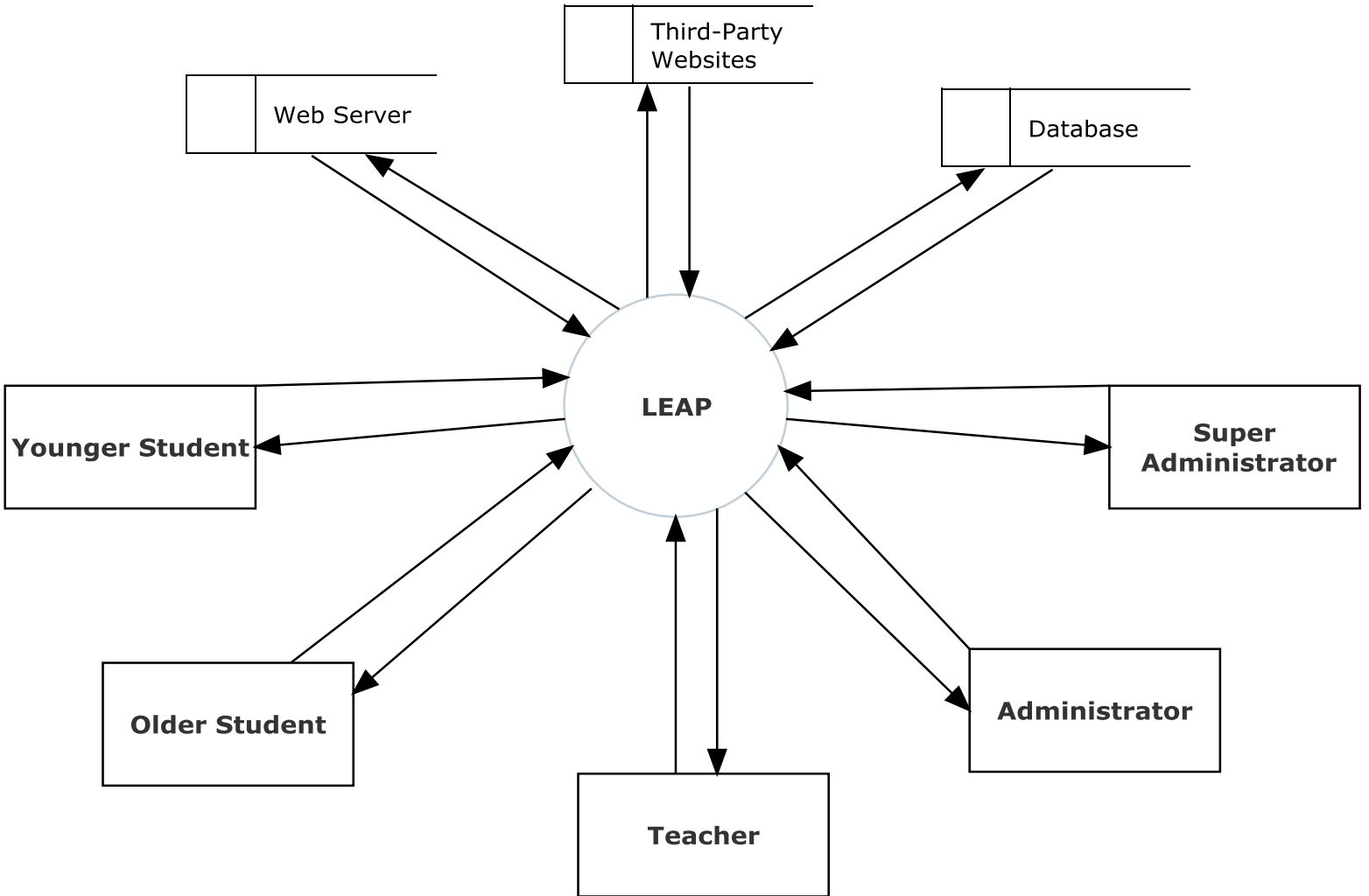


Data Store - Location where data is held temporarily or permanently.



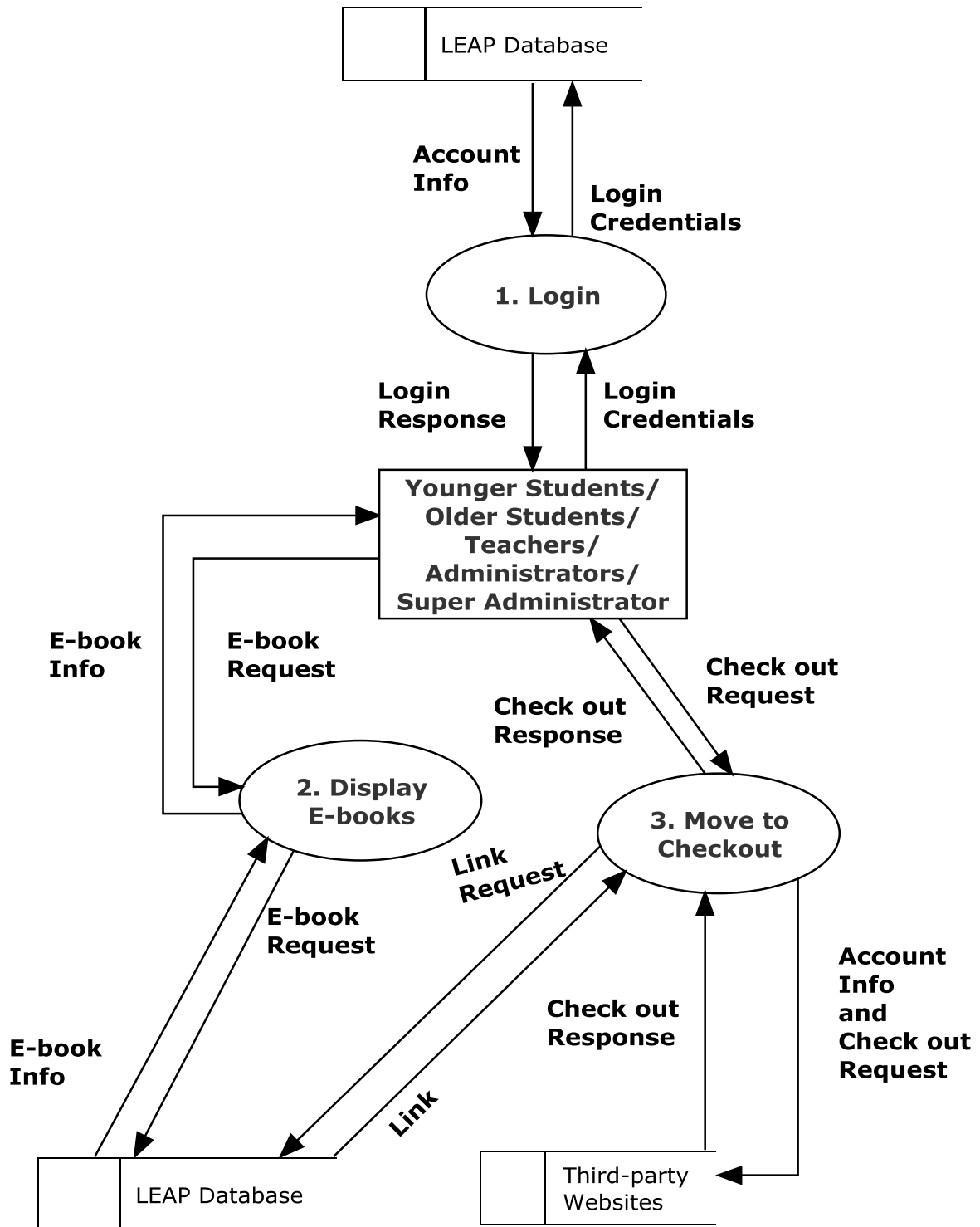
Data Flow - Data flowing to or from a process where X is the data.

7.2 Context Diagram

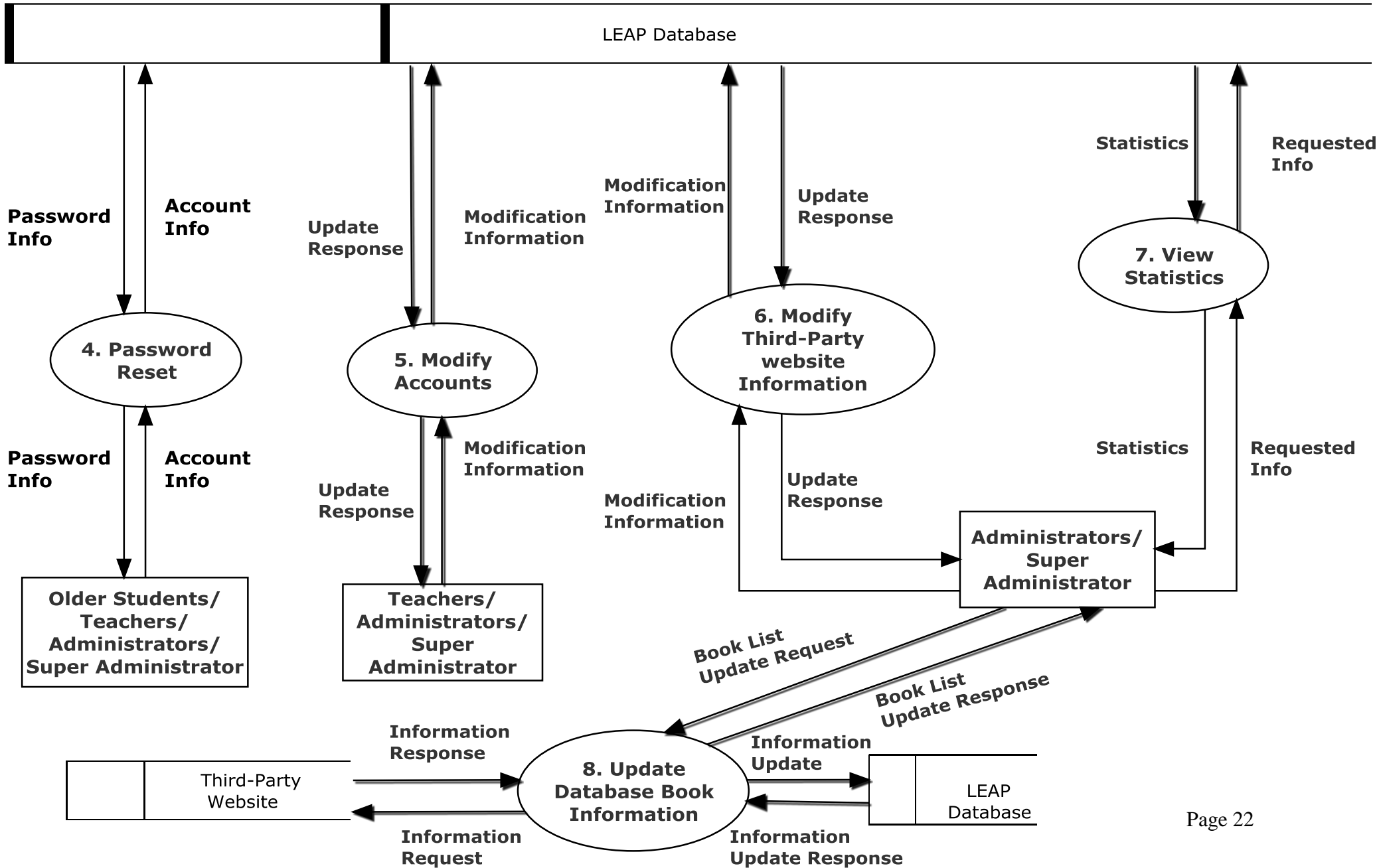


7.3 Level 0 Diagram

7.3.1 Part 1 of the Level 0 Diagram

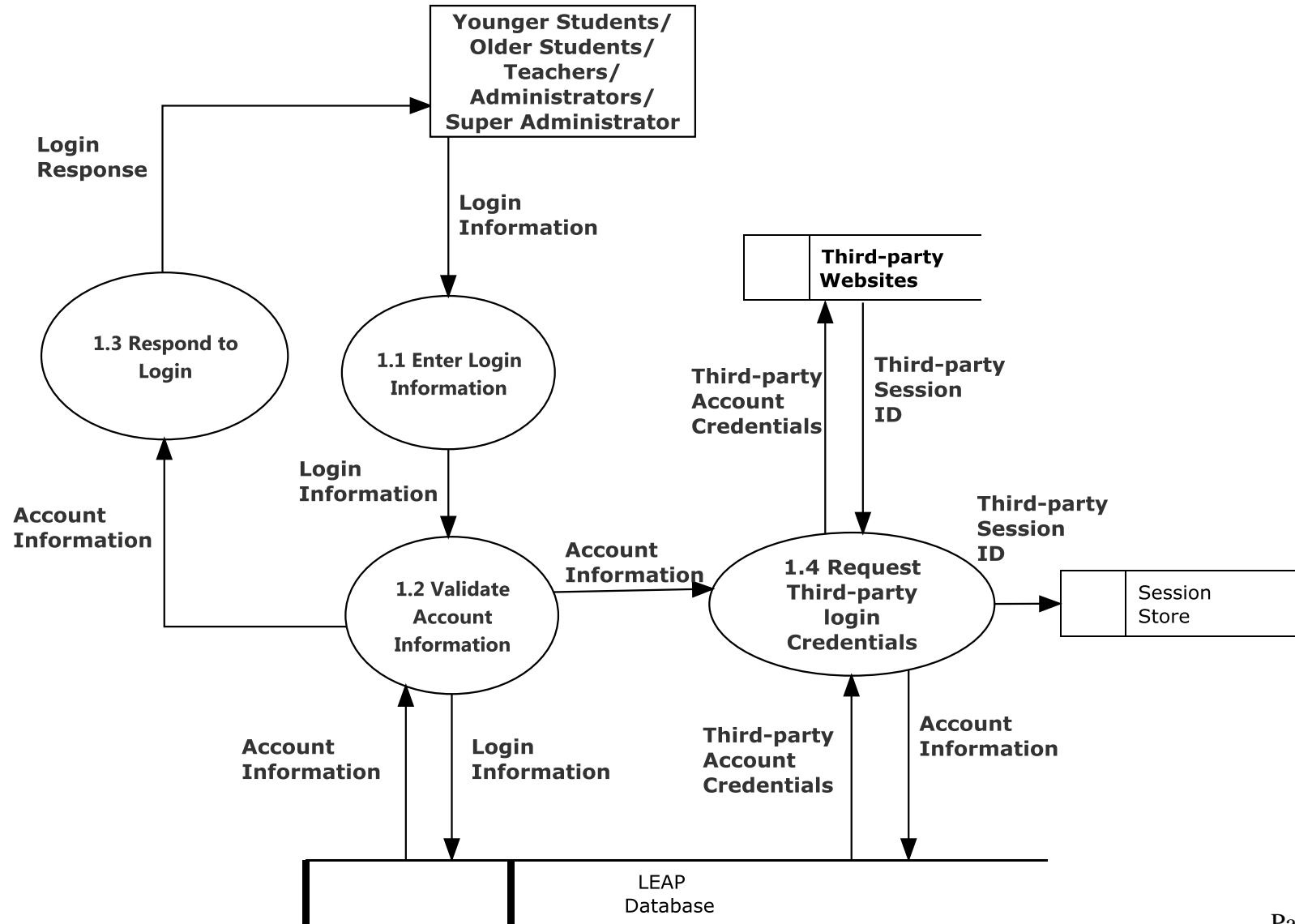


7.3.2 Part 2 of the Level 0 Diagram

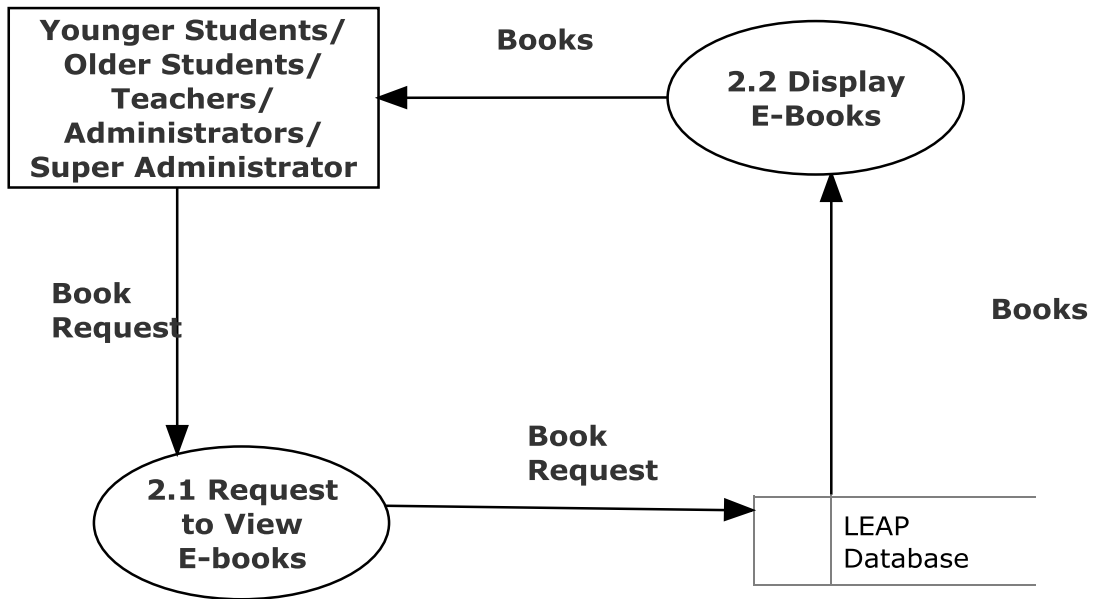


7.4 Level 1 Diagrams

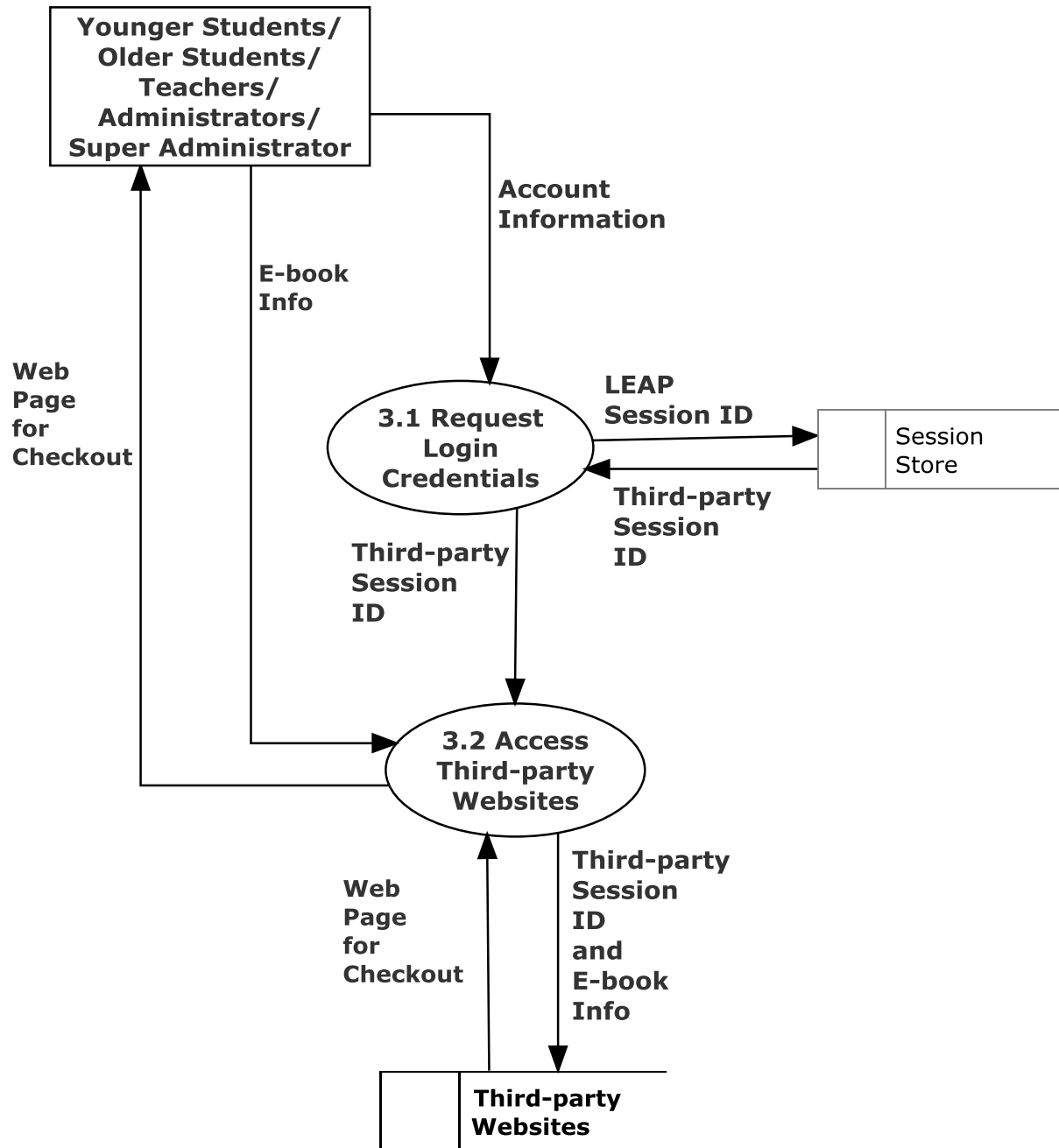
7.4.1 Login



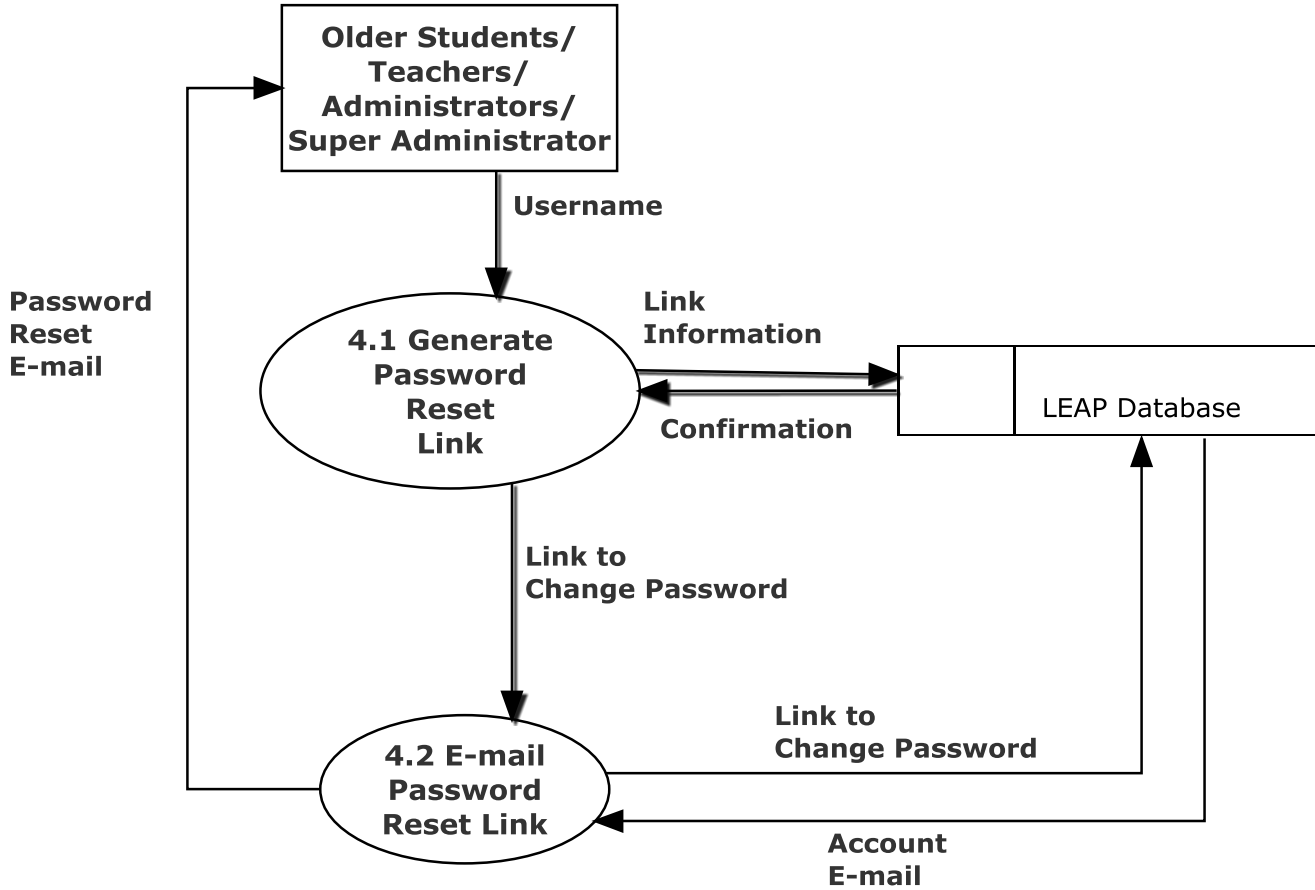
7.4.2 Display E-books



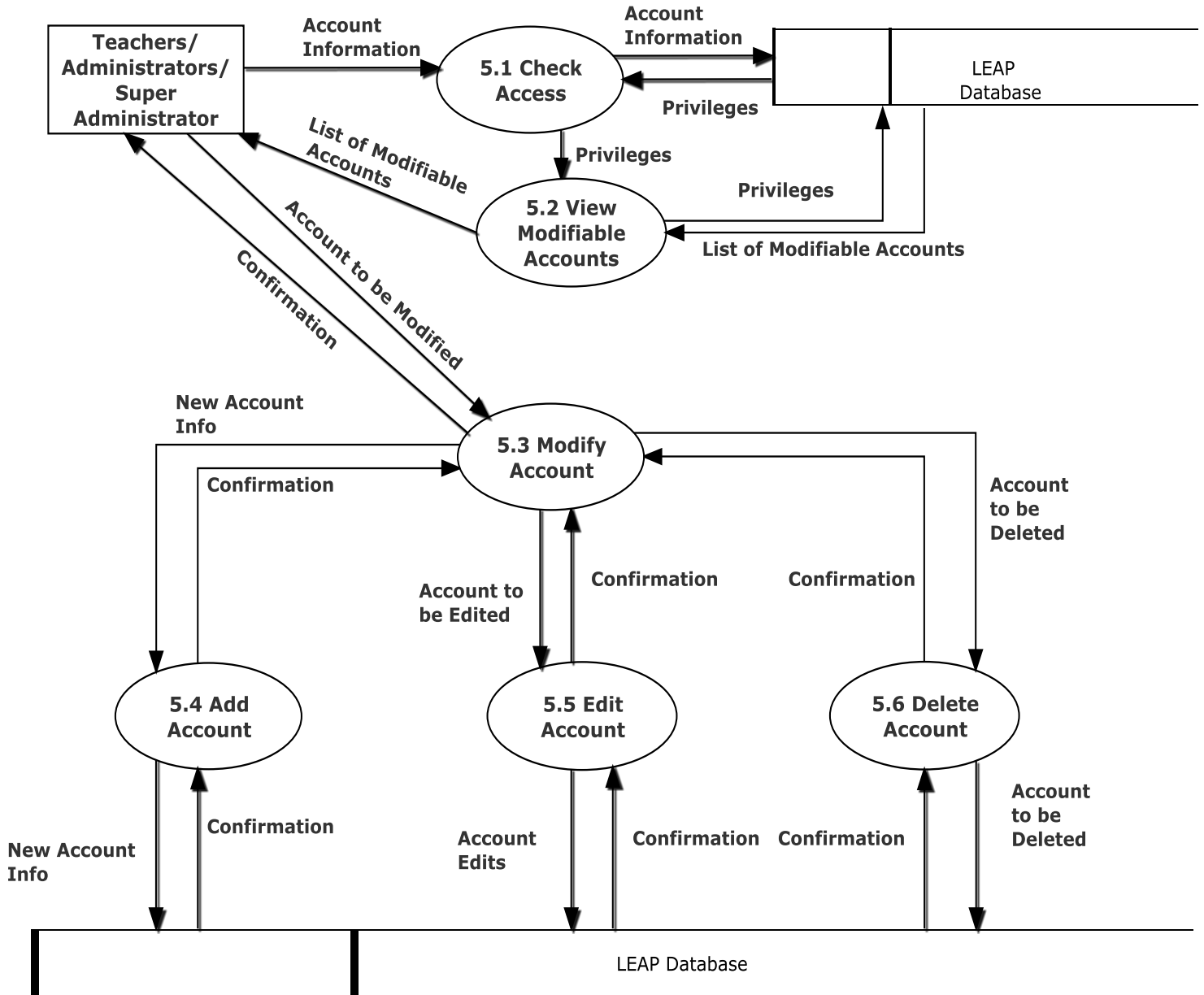
7.4.3 Move to Checkout



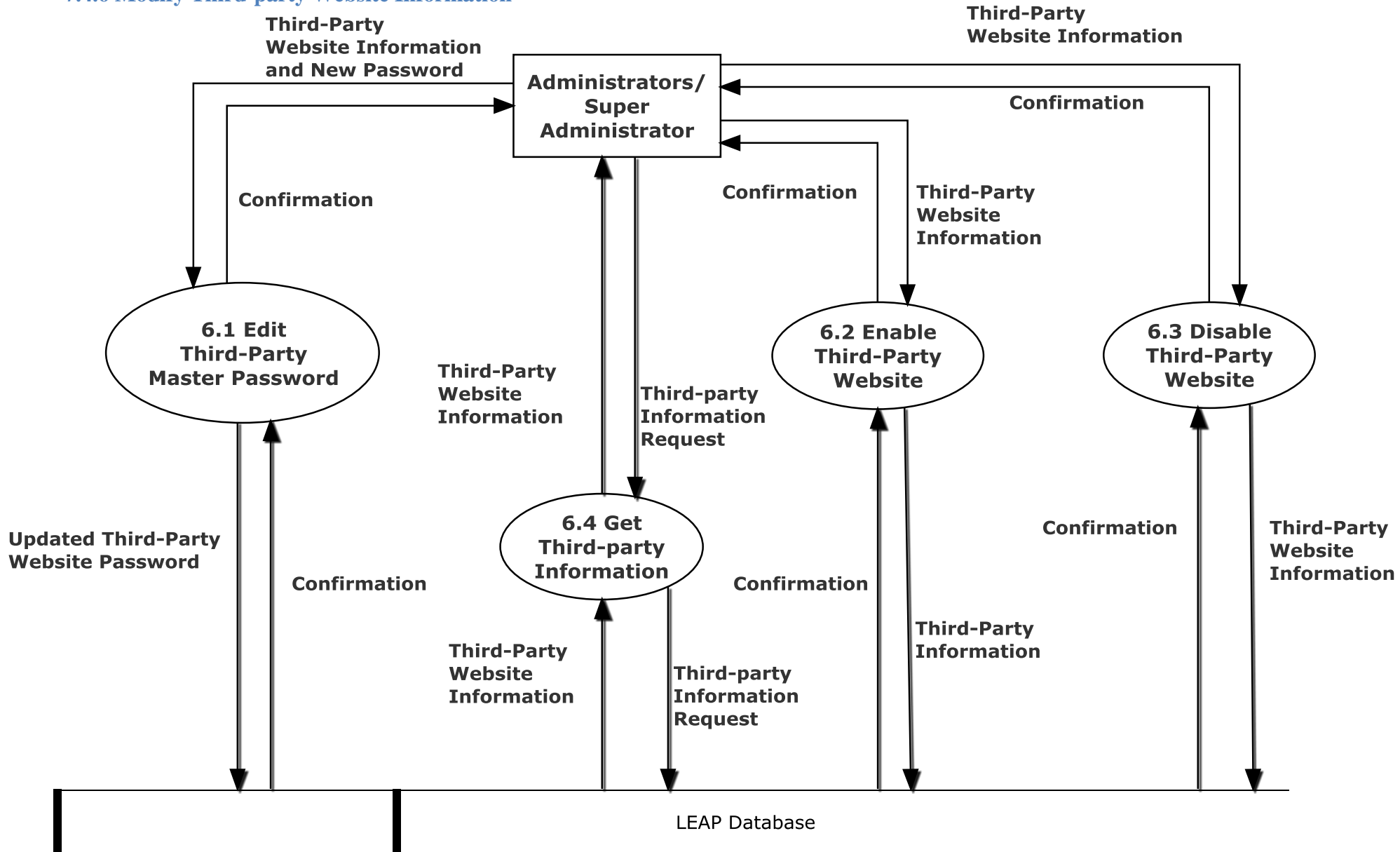
7.4.4 Password Reset



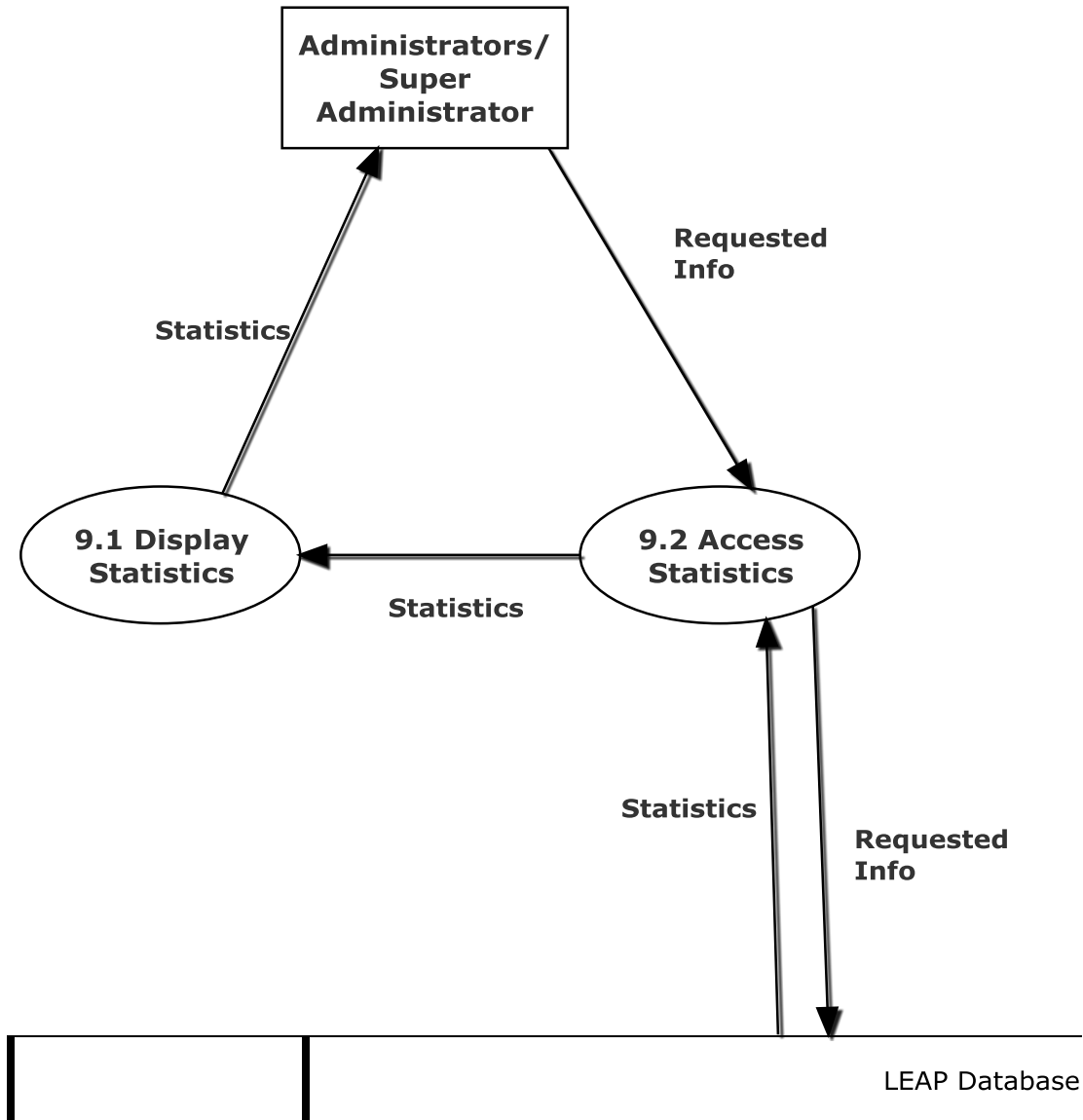
7.4.5 Modify Accounts



7.4.6 Modify Third-party Website Information

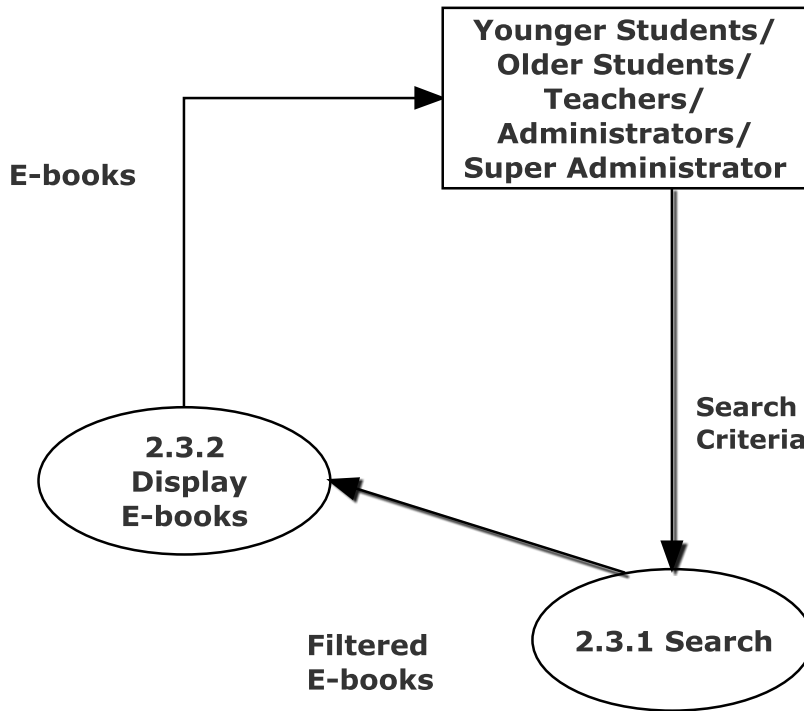


7.4.7 View Statistics

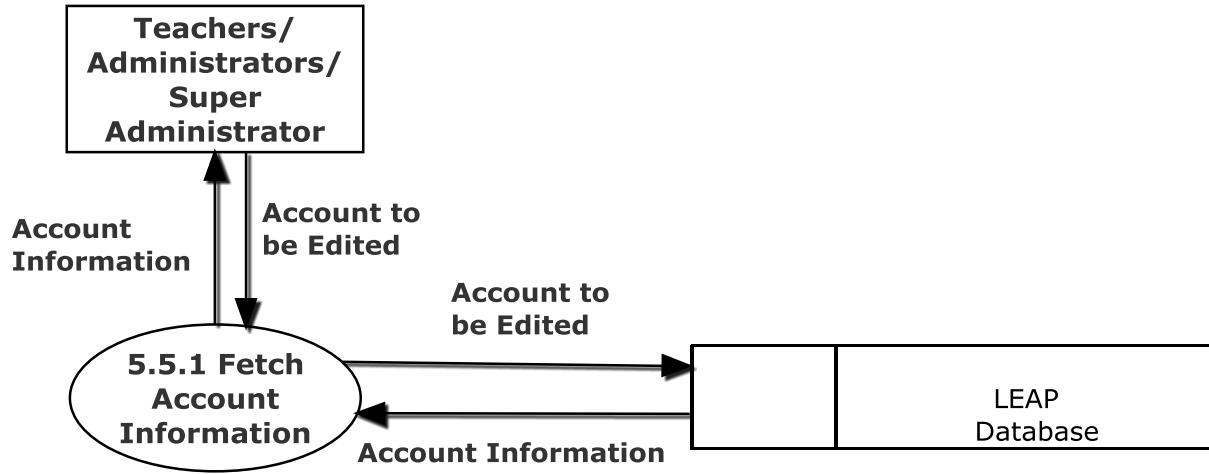


7.5 Level 2

7.5.1 Display E-books (2.3)



7.5.2 Edit Account (5.5)



8. Functional Requirements Inventory

The following list will detail the required functionality that LEAP will have once the system has been completely implemented. LEAP will be a web application viewable in all major internet browsers such as Internet Explorer, Mozilla Firefox, Google Chrome, and Safari. Compatibility with mobile devices is necessary.

8.1 Younger Students

- Will be able to login to the system
- Will be able to view e-books
- Will be able to filter e-books
- Will be able to search for e-books based on different criteria
- Will be brought to third-party websites to check out e-books

8.2 Older Students

- Will be able to login to the system
 - They can also reset their passwords
- Will be able to view e-books
- Will be able to filter e-books
- Will be able to search for e-books based on different criteria
- Will be brought to third-party websites to check out e-books

8.3 Teachers

- Will be able to login to the system
 - They can also reset their passwords
- Will be able to view e-books
 - They can view teacher specific e-books
- Will be able to filter e-books
- Will be able to search for e-books based on different criteria
- Will be brought to third-party websites to check out e-books
- Will be able to modify student accounts
 - They can add, edit and delete student accounts

8.4 Administrators

- Will be able to login to the system
 - They can also reset their passwords
- Will be able to view e-books
 - They can view teacher specific e-books
- Will be able to filter e-books
- Will be able to search for e-books based on different criteria
- Will be brought to third-party websites to check out e-books
- Will be able to modify student accounts
 - They can add, edit and delete student accounts
- Will be able to modify teacher accounts
 - They can add, edit, and delete teacher accounts
- Will be able to modify third-party websites
- Will be able to view statistics
- Will be able to modify scraper settings

8.5 Super Administrator

- Will be able to login to the system
 - They can also reset their passwords
- Will be able to view e-books
 - They can view teacher specific e-books
- Will be able to filter e-books
- Will be able to search for e-books based on different criteria
- Will be brought to third-party websites to check out e-books
- Will be able to modify student accounts
 - They can add, edit and delete student accounts
- Will be able to modify teacher accounts
 - They can add, edit, and delete teacher accounts
- Will be able to modify third-party websites
- Will be able to view statistics
- Will be able to modify scraper settings
- Will be able to modify administrator accounts
 - They can add, edit, and delete administrator accounts

9. Non-Functional Requirements Inventory

This list will detail the specific properties that will be implicitly defined in the LEAP software. This list does not specify explicit features of LEAP, but rather what LEAP is intended to do.

- LEAP will be designed to be efficient
- LEAP will be very user friendly, providing an easy to use and understand interface
- LEAP will be easy to access by all types of users
- LEAP will be have compatibility will multiple browsers, as well as a variety of mobile devices
- LEAP will be stable; meaning that all errors will be handled appropriately and we will work to ensure LEAP will not crash
- LEAP will be a secure platform

10. Logical Data Dictionary

10.1 Users Data Dictionary

Data Name	Data Type	Data Type Size	Description	Applicable to	Acceptable Input	Example	Comments
userName	Varchar	5-32 characters?	Username of member	log in	letters, numbers, and some special characters	Justin2good	
password	char	64 characters	password of member	log in	letters, numbers, and some special characters	2a3d2263156632 71bc93c5008e5129 faed75be1c1ae907 f820a50356577ccc86	
userID	int	1-32 bits	Unique id of member	Look up	Int	1	userID one is super Admin
Role	tiny int	8 bits	Member role (younger Student)	Identify privileges	Int	2	1= Younger Student 2= Older Student 3= Teacher 4= Admin
e-mail	Varchar	7-64 characters or null	e-mail of user	reseting password	Uppercase and lowercase English letters (a-z, A-Z) Digits 0 to 9 Characters ! # \$ % & ' * + - / = ? ^ _ ` { } ~	j2good@yopmail.com	Character . (dot, period, full stop) provided that it is not the first or last character, and provided also that it does not appear two or more times consecutively.
First Name	varchar	1-30 characters?	First name of member	Add users to system	ASCII char 32 (space), -, A-Z, a-z, ', ` , ASCII char 128 to ASCII char 165	Justin	
Last Name	varchar	1-60 characters?	Last name of member	Add users to system	ASCII char 32 (space), -, A-Z, a-z, ', ` , ASCII char 128 to ASCII char 165	Rousseau	
District	varchar	1-32 characters?	School District	log in/ e-book access	Letters, space, and some special characters	South Colonie	looking into local districts
Grade	tiny int	8 bits	Grade level	identify role	null, 0-12	0	0 is Kindergarten, null is not student

10.2 Third Party websites Data Dictionary

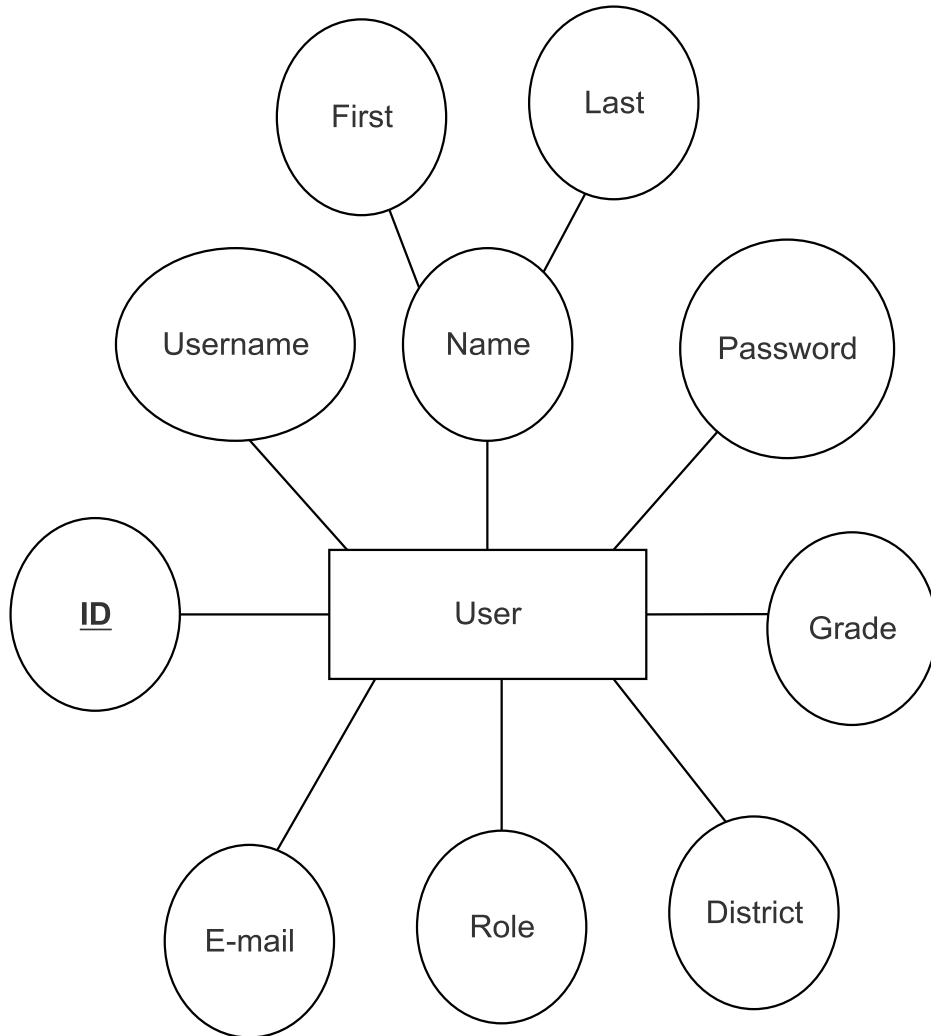
Data Name	Data Type	Data Type Size	Description	Applicable to	Acceptable Input	Example	Comments
Third party website name	varchar	1-32 characters?	third party website name	identify third party	letters and space	Rosen	looking into third party websites
Third party username	varchar	1-32 characters?	third party user name	log in to third party	letters	justin2bad	
Third party password	varchar	128 characters	third party password	log in to third party	letters, numbers, and special characters	hahalamaDmIn	
Active	bit	1 bit	1 for in use 0 for not	log in to third party websites/ login process	1 or 0	1	

10.3 E-books Data Dictionary

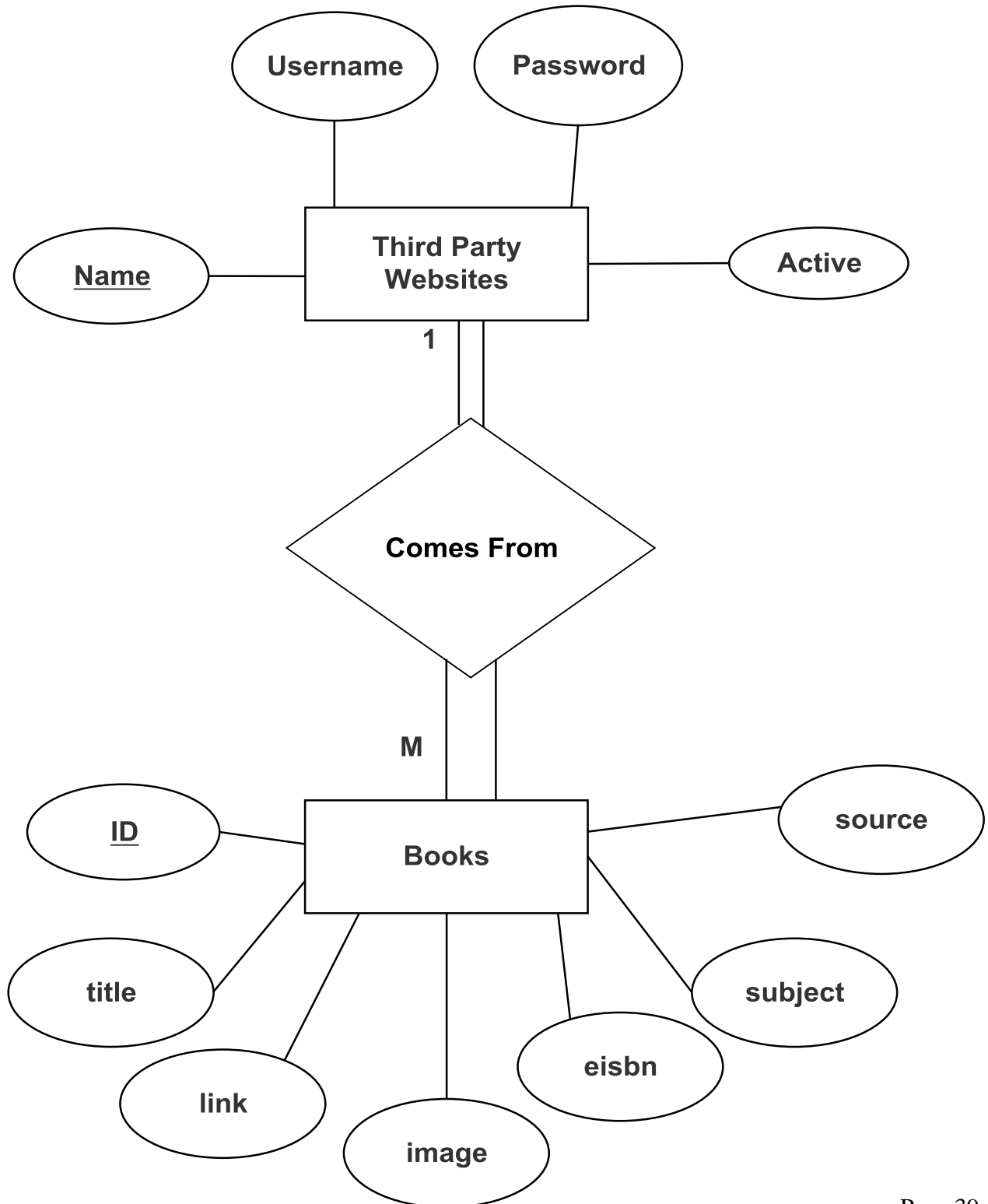
Data Name	Data Type	Data Type Size	Description	Applicable to	Acceptable Input	Example	Comments
ID	int	1-32bits	The unique identifying number for a book	Displaying E-Books	int		Book id 1 would be the first book added to the system
Title	varchar	128 characters	The title of the book	E-Book display	Letters, Numbers, and Symbols	Big Java	
Link	varchar	256 characters	Link to the E-Book on the vendor's site	E-Book display	A valid link	http://www.rosenlearningcenter.com/book/27	
Image	varchar	256 characters	An image of the book	E-Book display	A proper image		
eisbn	int	13 bits	The eisbn of the book	E-Book display	A valid eisbn number	9781476730400	
Subject	varchar	64 characters	The subject of the book	E-Book display	Letters, Numbers, and Symbols	Non-Fiction	Can be null
Source	varchar	32 characters	Where the book came from	E-Book display	Letters, Numbers, and Symbols	Rosen Learning Center	
Author	varchar	64 characters	Books author	E-Book display	Letters, Numbers, and Symbols	Josh MacDonald	Can be null
Description	varchar	512 characters	Description of the book	E-Book display	Letters, Numbers, and Symbols	Big Java teaches you java.	Can be null

11. ER Diagram

11.1 ER Diagram for Users Table



11.2 ER Diagram for Third Party Websites and Books Tables




12. User Displays

12.1 Login

Welcome To Leap

Username

Password






Welcome To Leap

Username
 ✖
The Username is required

Password
 ✖
The password is required



✖
Please enter a value




Username Does Not Exist

Welcome To Leap

Username

Password



[Different Image]

Submit
Forgot Password



Login To Leap: OK!

IP Address: ::1

User Agent: Mozilla/5.0 (Windows NT 6.1; WOW64) AppleWebKit/537.36 (KHTML, like Gecko) Chrome/38.0.2125.111 Safari/537.36

Last Activity: 1416498012

Login To Rosen: OK!

Session ID: JSESSIONID=83975E411445562B1AF4F9C8666B640C; Path=/
HttpOnly

Login To Gale: OK!

Session ID: JSESSIONID=1C09D623B0726490EB55D08ED6538800.omni1; Path=/auth/
HttpOnly

Login To Gale Professional: OK!

Session ID: JSESSIONID=EAD2BFAEE3EAA5D3359104B600E47C94.omni2; Path=/auth/
HttpOnly

User Information

- User_ID: 2
- Username: student
- Password(SHA256): 284c8c381bf16c982a4e59b0dd4c6f7808c51a05f64c35db42cc78a2a72875bb
- Role: Young Student
- E-Mail: student@leap.com
- First Name: Young
- Last Name: Student
- District: Questar III
- Grade: 6

Logout



12.2 Display

The screenshot shows the LEAP website interface. At the top left is the LEAP logo with the tagline "the lightweight ebook". A navigation bar contains "Home", "Profile", and "Admin" with a dropdown arrow, and a "Logout" link on the right. Below the navigation bar is a grid of three book cards:

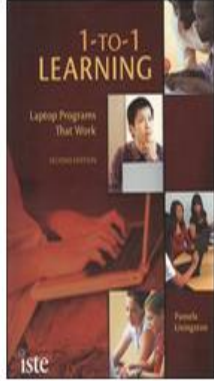
- 1 to 1 Learning**: Author: Livingston, ISBN: 978-1-56484-254-1, Subject: Education. Description icon: ⓘ. Checkout button.
- 10 Best Teaching Practices**: Author: Tileston, ISBN: 978-1-4129-7393-9, Subject: Education. Description icon: ⓘ. Checkout button.
- 10 Strategies for Doubling Student Performance**: Author: Odden, ISBN: 978-1-4129-7147-8, Subject: Education. Description icon: ⓘ. Checkout button.

At the bottom of the grid is a search bar with the text "421 Results Order By" followed by a dropdown menu set to "Title", a "Reverse?" checkbox, a search input field, a "Search By" dropdown set to "All", and a "Clear Filters" button.

This close-up shows the search bar area. The "Order By" dropdown menu is open, displaying the following options: Title, Author, Subject, and ISBN. The "Search By" dropdown menu is also open, displaying the following options: All, Title, Author, Subject, ISBN, and Description.

This close-up shows the search bar area. The "Search By" dropdown menu is open, displaying the following options: All, Title, Author, Subject, ISBN, and Description.

1 to 1 Learning




Author: Livingston

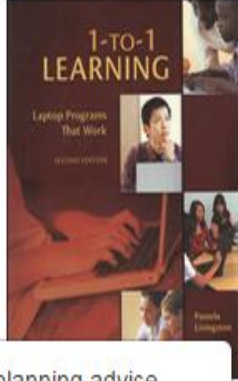
ISBN: 978-1-56484-254-1

Subject: Education

Description: ⓘ


Checkout 

1 to 1 Learning



Provides practical planning advice, case studies of successful programs, and numerous implementation resources. Also covers 1-to-1 leadership, tablet PCs, and the shift toward learner-centric educational environments.

Description: ⓘ

Checkout 

13. Testing Requirements

Each functional requirement will be tested according to our software development model; the agile scrum methodology. The tests will be conducted in different web browsers, such as Mozilla Firefox, Google Chrome, Internet Explorer, and Apple Safari. Additionally, tests will be conducted on mobile devices. Upon completion of an item, we will do unit testing or functional testing as needed. We will also conduct overall system testing and any necessary regression testing as more items are developed. Towards the end of our development cycle, we will be coordinating with our clients to achieve beta testing. This will include students that will use the system upon completion, enabling us to also receive feedback on any non-functional requirements.

14. Testing Results

14.1 Log in Testing

	A	B	C	D	E	F	G	H	I	J	K
1	LEAP										
2	Log In										
3	Log a user into LEAP. Log into third-party websites.										
4											
5	Test Cases										
6	Pass/Fail Status	Test Number	Description	Action to perform test (input)	Steps to be Executed	State Before Test	Expected result	Observed result	Comments	Tested By	Test Date
7	P	1.001	Null everything	Leave everything Blank.	Press submit.	Empty Form.	Fill out username, password, and captcha	The user is notified that username, password, and CAPTCHA are all required.		Omega Tech	11/24/2014
8	P	1.002	Null Username Field	Leave username field blank.	Fill out the password, captcha and submit.	Empty Form.	Displays message "Please fill out username Field"	The user is notified that a username is required.		Omega Tech	11/24/14
9	P	1.003	Null Password Field	Leave password field blank.	Fill out the username, captcha and submit.	Empty Form.	Displays message "Please fill out password field"	The user is notified that their password is required.		Omega Tech	11/24/14
10	P	1.004	Null Username and Password Fields	Leave username and password field blank	Fill out captcha. Press submit.	Empty Form.	Diplays message "please fill out username Field."	The user is notified that their username and password is required.		Omega Tech	11/24/14
11	P	1.005	Incorrect Password for given username.	Input incorrect Username and password combination. But correct captcha	Press submit.	Empty Form.	Displays message: Password does not match username.:	An error message is displayed at the top of the screen stating that password is incorrect.		Omega Tech	11/24/14

12	P	1.006	Non-existing username.	Input a username which does not exist.	Fill out an incorrect username and a password.	Empty Form.	Displays message: "Username does not exist, Contact your teacher."	An error message is displayed at the top of the screen stating that the username does not exist.	Omega Tech	11/24/14
13	P	1.007	Correct Username and Password	Input the correct username and password. Also correct captcha	Fill out the correct username and password.	Empty Form.	No Error. Redirected to home page	The user is redirected to the home page.	Omega Tech	11/24/14
14	P	1.008	Username length less than 5 characters.	Input a username less than 5 characters.	Fill out the correct password and CAPTCHA and press submit.	Empty Form.	Displays message: "Username must be between 5 and 50 characters."	The user is notified that the username must be between 5 and 50 characters.	Omega Tech	11/24/14
15	P	1.009	Password length less than 5 characters.	Input a Password less than 5 characters.	Fill out the correct username and CAPTCHA and press submit.	Empty Form.	Displays message: "Password must be between 5 and 50 characters."	The user is notified that the Password must be between 5 and 50 characters.	Omega Tech	11/24/14
16	P	1.010	Null Captcha Field	Leave CAPTCHA blank	Fill out everything except captcha	Empty Form.	Displays message: "captcha is incorrect"	The user is notified that they should enter a value for the CAPTCHA	Omega Tech	11/24/14
17	P	1.011	Incorrect Captcha Field	Input correct username and password, with incorrect CAPTCHA	Fill out the correct CAPTCHA	Empty Form.	Displays message: "captcha is incorrect"	An error message displayed saying: "CAPTCHA message is incorrect."	Omega Tech	11/24/14
25	P	= Unit Summary		100% passing		11 passed		Date of last test =		11/24/14
26		11 tests				0 failed				

14.2 Display Testing: Chrome

	A	B	C	D	E	F	G	H	I	J	K
1	LEAP										
2	Display and Checkout on browser Chrome										
3	Display the e-books and click on checkout to go to one of the e-books										
4											
5	Test Cases										
6	Pass/Fail Status	Test Number	Description	Action to perform test (input)	Steps to be Executed	State Before Test	Expected result	Observed result	Comments	Tested By	Test Date
7	P	1.001	Go to display page without logging in	Use the display url to go directly to display page	Type the url and hit go	User is not logged in	Redirected to log in page	User is redirected to log in page		Omega Tech	3/5/2015
8	P	1.002	Log in and see if user is directed to display page	Log in to LEAP	Fill out correct log in credentials and captcha	User not logged in	On a successful log in the user is directed to the display page	The user is directed to the display page	Books are displayed ordered by title as expected	Omega Tech	3/5/2015
9	P	1.003	Reverse order e-books by title	Leave everything as it was and just click the check box for reverse?	Click on the reverse check box	reverse check box was unchecked	E-books are ordered by title in reverse order	E-books are ordered by title in reverse order		Omega Tech	3/5/2015
10	P	1.004	Order by Author	Leave everything blank, reverse unchecked, and pick author for order by	Selected order by author	Ordered by title	E-books are ordered by author	E-books are ordered by author	E-books with no author value are listed first	Omega Tech	3/5/2015
11	P	1.005	Order by Author reverse	Leave everything blank, order by author, and have reverse checked	Selected order by author and check reverse	Ordered by title	E-books are ordered by author In a reverse order	E-books are ordered by author In a reverse order	E-books with no author value are listed last	Omega Tech	3/5/2015
12	P	1.006	Order by ISBN	Leave everything blank, reverse unchecked, and pick ISBN for order by	Selected order by ISBN	Ordered by title	E-books are ordered by ISBN	E-books are ordered by ISBN	E-books with no ISBN value are listed first	Omega Tech	3/5/2015

13	P	1.007	Order by ISBN reverse	Leave everything blank, order by ISBN, and have reverse checked	Selected order by ISBN and check reverse	Ordered by title	E-books are ordered by ISBN in a reverse order	E-books are ordered by ISBN in a reverse order	E-books with no ISBN value are listed last	Omega Tech	3/5/2015
14	P	1.008	Order by subject	Leave everything blank, reverse unchecked, and pick subject for order by	Selected order by subject	Ordered by title	E-books are ordered by subject	E-books are ordered by subject		Omega Tech	3/5/2015
15	P	1.009	Order by subject reverse	Leave everything blank, order by subject and have reverse checked	Selected order by subject and check reverse	Ordered by title	E-books are ordered by subject in a reverse order	E-books are ordered by subject in a reverse order		Omega Tech	3/5/2015
16	P	1.010	Search by all	leave everything as it was and type a search keyword	Fill out a search keyword and leave everything else the same	Ordered by title with all books displayed	E-books with search keyword are displayed	E-books with search keyword are displayed		Omega Tech	3/5/2015
17	P	1.011	Search by title	leave everything as it was and type a search keyword and choose search by title	Fill out a search keyword and choose search by title	Ordered by title with all books displayed	E-books with search keyword in title are displayed	E-books with search keyword in title are displayed		Omega Tech	3/5/2015
18	P	1.012	Search by author	leave everything as it was and type a search keyword and choose search by author	Fill out a search keyword and choose search by author	Ordered by title with all books displayed	E-books with search keyword in author are displayed	E-books with search keyword in author are displayed		Omega Tech	3/5/2015
19	P	1.013	Search by subject	leave everything as it was and type a search keyword and choose search by subject	Fill out a search keyword and choose search by subject	Ordered by title with all books displayed	E-books with search keyword in subject are displayed	E-books with search keyword in subject are displayed		Omega Tech	3/5/2015
20	P	1.014	Search by ISBN	leave everything as it was and type a search keyword and choose search by ISBN	Fill out a search keyword and choose search by ISBN	Ordered by title with all books displayed	E-books with search keyword in ISBN are displayed	E-books with search keyword in ISBN are displayed		Omega Tech	3/5/2015
21	P	1.015	Search by description	leave everything as it was and type a search keyword and choose search by description	Fill out a search keyword and choose search by description	Ordered by title with all books displayed	E-books with search keyword in description are displayed	E-books with search keyword in description are displayed		Omega Tech	3/5/2015
22	P	1.016	Clear Filter	Do a search and then hit clear filters	Click on clear filters after a search was executed	Ordered by title, search key 'helps', and search by description	Clears all filters and displays all e-books ordered by title	Clears all filters and displays all e-books ordered by title		Omega Tech	3/5/2015

23	P	1.017	Check out to Gale Virtual Reference library	click on checkout on a book by Gale Virtual Reference Library	Click on checkout	On page display	On page checkout of the desired e-book on Gale Virtual Reference Library website	On page checkout of the desired e-book on Gale Virtual Reference Library website		Omega Tech	3/5/2015
24	P	1.018	Check out to Rosen Learning Center	click on checkout on a book by Rosen Learning Center	Click on checkout	On page display	On page checkout of the desired e-book on Rosen Learning Center website	On page checkout of the desired e-book on Rosen Learning Center website		Omega Tech	3/5/2015
25	P	1.019	Click on LEAP logo	Click on LEAP logo	Click on LEAP logo	On page display	Redirected to display page	redirected to display page with all books displayed by order title		Omega Tech	3/5/2015
26	P	1.020	Click on Home button	Click on Home button	Click on Home button	On page display	Redirected to display page	redirected to display page with all books displayed by order title		Omega Tech	3/5/2015
27	P	1.021	Logout	Click on Logout	Click on Logout	On page display	Redirected to login page with a successful log out message	Redirected to login page with a successful log out message		Omega Tech	3/5/2015
28	P	= Unit Summary		100% passing		21 passed		Date of last test =		3/5/15	
29		21 tests				0 failed					

14.3 Display Testing: Safari

	A	B	C	D	E	F	G	H	I	J	K
1	LEAP										
2	Display and Checkout on browser Safari										
3	Display the e-books and click on checkout to go to one of the e-books										
4											
5	Test Cases										
6	Pass/Fail Status	Test Number	Description	Action to perform test (input)	Steps to be Executed	State Before Test	Expected result	Observed result	Comments	Tested By	Test Date
7	P	1.001	Go to display page without logging in	Use the display url to go directly to display page	Type the url and hit go	User is not logged in	Redirected to log in page	User is redirected to log in page		Omega Tech	3/5/2015
8	P	1.002	Log in and see if user is directed to display page	Log in to LEAP	Fill out correct log in credentials and captcha	User not logged in	On a successful log in the user is directed to the display page	The user is directed to the display page	Books are displayed ordered by title as expected	Omega Tech	3/5/2015
9	P	1.003	Reverse order e-books by title	Leave everything as it was and just click the check box for reverse?	Click on the reverse check box	reverse check box was unchecked	E-books are ordered by title in reverse order	E-books are ordered by title in reverse order		Omega Tech	3/5/2015
10	P	1.004	Order by Author	Leave everything blank, reverse unchecked, and pick author for order by	Selected order by author	Ordered by title	E-books are ordered by author	E-books are ordered by author	E-books with no author value are listed first	Omega Tech	3/5/2015
11	P	1.005	Order by Author reverse	Leave everything blank, order by author, and have reverse checked	Selected order by author and check reverse	Ordered by title	E-books are ordered by author in a reverse order	E-books are ordered by author in a reverse order	E-books with no author value are listed last	Omega Tech	3/5/2015
12	P	1.006	Order by ISBN	Leave everything blank, reverse unchecked, and pick ISBN for order by	Selected order by ISBN	Ordered by title	E-books are ordered by ISBN	E-books are ordered by ISBN	E-books with no ISBN value are listed first	Omega Tech	3/5/2015

13	P	1.007	Order by ISBN reverse	Leave everything blank, order by ISBN, and have reverse checked	Selected order by ISBN and check reverse	Ordered by title	E-books are ordered by ISBN in a reverse order	E-books are ordered by ISBN in a reverse order	E-books with no ISBN value are listed last	Omega Tech	3/5/2015
14	P	1.008	Order by subject	Leave everything blank, reverse unchecked, and pick subject for order by	Selected order by subject	Ordered by title	E-books are ordered by subject	E-books are ordered by subject		Omega Tech	3/5/2015
15	P	1.009	Order by subject reverse	Leave everything blank, order by subject and have reverse checked	Selected order by subject and check reverse	Ordered by title	E-books are ordered by subject in a reverse order	E-books are ordered by subject in a reverse order		Omega Tech	3/5/2015
16	P	1.010	Search by all	leave everything as it was and type a search keyword	Fill out a search keyword and leave everything else the same	Ordered by title with all books displayed	E-books with search keyword are displayed	E-books with search keyword are displayed		Omega Tech	3/5/2015
17	P	1.011	Search by title	leave everything as it was and type a search keyword and choose search by title	Fill out a search keyword and choose search by title	Ordered by title with all books displayed	E-books with search keyword in title are displayed	E-books with search keyword in title are displayed		Omega Tech	3/5/2015
18	P	1.012	Search by author	leave everything as it was and type a search keyword and choose search by author	Fill out a search keyword and choose search by author	Ordered by title with all books displayed	E-books with search keyword in author are displayed	E-books with search keyword in author are displayed		Omega Tech	3/5/2015
19	P	1.013	Search by subject	leave everything as it was and type a search keyword and choose search by subject	Fill out a search keyword and choose search by subject	Ordered by title with all books displayed	E-books with search keyword in subject are displayed	E-books with search keyword in subject are displayed		Omega Tech	3/5/2015
20	P	1.014	Search by ISBN	leave everything as it was and type a search keyword and choose search by ISBN	Fill out a search keyword and choose search by ISBN	Ordered by title with all books displayed	E-books with search keyword in ISBN are displayed	E-books with search keyword in ISBN are displayed		Omega Tech	3/5/2015
21	P	1.015	Search by description	leave everything as it was and type a search keyword and choose search by description	Fill out a search keyword and choose search by description	Ordered by title with all books displayed	E-books with search keyword in description are displayed	E-books with search keyword in description are displayed		Omega Tech	3/5/2015
22	P	1.016	Clear Filter	Do a search and then hit clear filters	Click on clear filters after a search was executed	Ordered by title, search key 'helps', and search by description	Clears all filters and displays all e-books ordered by title	Clears all filters and displays all e-books ordered by title		Omega Tech	3/5/2015

23	P	1.017	Check out to Gale Virtual Reference library	click on checkout on a book by Gale Virtual Reference Library	Click on checkout	On page display	On page checkout of the desired e-book on Gale Virtual Reference Library website	On page checkout of the desired e-book on Gale Virtual Reference Library website	Omega Tech	3/5/2015
24	P	1.018	Check out to Rosen Learning Center	click on checkout on a book by Rosen Learning Center	Click on checkout	On page display	On page checkout of the desired e-book on Rosen Learning Center website	On page checkout of the desired e-book on Rosen Learning Center website	Omega Tech	3/5/2015
25	P	1.019	Click on LEAP logo	Click on LEAP logo	Click on LEAP logo	On page display	Redirected to display page	redirected to display page with all books displayed by order title	Omega Tech	3/5/2015
26	P	1.020	Click on Home button	Click on Home button	Click on Home button	On page display	Redirected to display page	redirected to display page with all books displayed by order title	Omega Tech	3/5/2015
27	P	1.021	Logout	Click on Logout	Click on Logout	On page display	Redirected to login page with a successful log out message	Redirected to login page with a successful log out message	Omega Tech	3/5/2015
28	P	= Unit Summary		100% passing		21 passed		Date of last test =		3/5/15
29		21 tests				0 failed				

14.4 Display Testing: Firefox

	A	B	C	D	E	F	G	H	I	J	K
1	LEAP										
2	Display and Checkout on browser Firefox										
3	Display the e-books and click on checkout to go to one of the e-books										
4											
5	Test Cases										
6	Pass/Fail Status	Test Number	Description	Action to perform test (input)	Steps to be Executed	State Before Test	Expected result	Observed result	Comments	Tested By	Test Date
7	P	1.001	Go to display page without logging in	Use the display url to go directly to display page	Type the url and hit go	User is not logged in	Redirected to log in page	User is redirected to log in page		Omega Tech	3/5/2015
8	P	1.002	Log in and see if user is directed to display page	Log in to LEAP	Fill out correct log in credentials and captcha	User not logged in	On a successful log in the user is directed to the display page	The user is directed to the display page	Books are displayed ordered by title as expected	Omega Tech	3/5/2015
9	P	1.003	Reverse order e-books by title	Leave everything as it was and just click the check box for reverse?	Click on the reverse check box	reverse check box was unchecked	E-books are ordered by title in reverse order	E-books are ordered by title in reverse order		Omega Tech	3/5/2015
10	P	1.004	Order by Author	Leave everything blank, reverse unchecked, and pick author for order by	Selected order by author	Ordered by title	E-books are ordered by author	E-books are ordered by author	E-books with no author value are listed first	Omega Tech	3/5/2015
11	P	1.005	Order by Author reverse	Leave everything blank, order by author, and have reverse checked	Selected order by author and check reverse	Ordered by title	E-books are ordered by author in a reverse order	E-books are ordered by author in a reverse order	E-books with no author value are listed last	Omega Tech	3/5/2015
12	P	1.006	Order by ISBN	Leave everything blank, reverse unchecked, and pick ISBN for order by	Selected order by ISBN	Ordered by title	E-books are ordered by ISBN	E-books are ordered by ISBN	E-books with no ISBN value are listed first	Omega Tech	3/5/2015

13	P	1.007	Order by ISBN reverse	Leave everything blank, order by ISBN, and have reverse checked	Selected order by ISBN and check reverse	Ordered by title	E-books are ordered by ISBN in a reverse order	E-books are ordered by ISBN in a reverse order	E-books with no ISBN value are listed last	Omega Tech	3/5/2015
14	P	1.008	Order by subject	Leave everything blank, reverse unchecked, and pick subject for order by	Selected order by subject	Ordered by title	E-books are ordered by subject	E-books are ordered by subject		Omega Tech	3/5/2015
15	P	1.009	Order by subject reverse	Leave everything blank, order by subject and have reverse checked	Selected order by subject and check reverse	Ordered by title	E-books are ordered by subject in a reverse order	E-books are ordered by subject in a reverse order		Omega Tech	3/5/2015
16	P	1.010	Search by all	leave everything as it was and type a search keyword	Fill out a search keyword and leave everything else the same	Ordered by title with all books displayed	E-books with search keyword are displayed	E-books with search keyword are displayed		Omega Tech	3/5/2015
17	P	1.011	Search by title	leave everything as it was and type a search keyword and choose search by title	Fill out a search keyword and choose search by title	Ordered by title with all books displayed	E-books with search keyword in title are displayed	E-books with search keyword in title are displayed		Omega Tech	3/5/2015
18	P	1.012	Search by author	leave everything as it was and type a search keyword and choose search by author	Fill out a search keyword and choose search by author	Ordered by title with all books displayed	E-books with search keyword in author are displayed	E-books with search keyword in author are displayed		Omega Tech	3/5/2015
19	P	1.013	Search by subject	leave everything as it was and type a search keyword and choose search by subject	Fill out a search keyword and choose search by subject	Ordered by title with all books displayed	E-books with search keyword in subject are displayed	E-books with search keyword in subject are displayed		Omega Tech	3/5/2015
20	P	1.014	Search by ISBN	leave everything as it was and type a search keyword and choose search by ISBN	Fill out a search keyword and choose search by ISBN	Ordered by title with all books displayed	E-books with search keyword in ISBN are displayed	E-books with search keyword in ISBN are displayed		Omega Tech	3/5/2015
21	P	1.015	Search by description	leave everything as it was and type a search keyword and choose search by description	Fill out a search keyword and choose search by description	Ordered by title with all books displayed	E-books with search keyword in description are displayed	E-books with search keyword in description are displayed		Omega Tech	3/5/2015
22	P	1.016	Clear Filter	Do a search and then hit clear filters	Click on clear filters after a search was executed	Ordered by title, search key 'helps', and search by description	Clears all filters and displays all e-books ordered by title	Clears all filters and displays all e-books ordered by title		Omega Tech	3/5/2015

23	P	1.017	Check out to Gale Virtual Reference library	click on checkout on a book by Gale Virtual Reference Library	Click on checkout	On page display	On page checkout of the desired e-book on Gale Virtual Reference Library website	On page checkout of the desired e-book on Gale Virtual Reference Library website		Omega Tech	3/5/2015
24	P	1.018	Check out to Rosen Learning Center	click on checkout on a book by Rosen Learning Center	Click on checkout	On page display	On page checkout of the desired e-book on Rosen Learning Center website	On page checkout of the desired e-book on Rosen Learning Center website		Omega Tech	3/5/2015
25	P	1.019	Click on LEAP logo	Click on LEAP logo	Click on LEAP logo	On page display	Redirected to display page	redirected to display page with all books displayed by order title		Omega Tech	3/5/2015
26	P	1.020	Click on Home button	Click on Home button	Click on Home button	On page display	Redirected to display page	redirected to display page with all books displayed by order title		Omega Tech	3/5/2015
27	P	1.021	Logout	Click on Logout	Click on Logout	On page display	Redirected to login page with a successful log out message	Redirected to login page with a successful log out message		Omega Tech	3/5/2015
28	P	= Unit Summary		100% passing		21 passed		Date of last test =		3/5/15	
29		21 tests				0 failed					

14.5 Display Testing: Internet Explorer

	A	B	C	D	E	F	G	H	I	J	K
1	LEAP										
2	Display and Checkout on browser Internet Explorer										
3	Display the e-books and click on checkout to go to one of the e-books										
4											
5	Test Cases										
6	Pass/Fail Status	Test Number	Description	Action to perform test (input)	Steps to be Executed	State Before Test	Expected result	Observed result	Comments	Tested By	Test Date
7	P	1.001	Go to display page without logging in	Use the display url to go directly to display page	Type the url and hit go	User is not logged in	Redirected to log in page	User is redirected to log in page		Omega Tech	3/5/2015
8	P	1.002	Log in and see if user is directed to display page	Log in to LEAP	Fill out correct log in credentials and captcha	User not logged in	On a successful log in the user is directed to the display page	The user is directed to the display page	Books are displayed ordered by title as expected	Omega Tech	3/5/2015
9	P	1.003	Reverse order e-books by title	Leave everything as it was and just click the check box for reverse?	Click on the reverse check box	reverse check box was unchecked	E-books are ordered by title in reverse order	E-books are ordered by title in reverse order		Omega Tech	3/5/2015
10	P	1.004	Order by Author	Leave everything blank, reverse unchecked, and pick author for order by	Selected order by author	Ordered by title	E-books are ordered by author	E-books are ordered by author	E-books with no author value are listed first	Omega Tech	3/5/2015
11	P	1.005	Order by Author reverse	Leave everything blank, order by author, and have reverse checked	Selected order by author and check reverse	Ordered by title	E-books are ordered by author in a reverse order	E-books are ordered by author in a reverse order	E-books with no author value are listed last	Omega Tech	3/5/2015
12	P	1.006	Order by ISBN	Leave everything blank, reverse unchecked, and pick ISBN for order by	Selected order by ISBN	Ordered by title	E-books are ordered by ISBN	E-books are ordered by ISBN	E-books with no ISBN value are listed first	Omega Tech	3/5/2015

13	P	1.007	Order by ISBN reverse	Leave everything blank, order by ISBN, and have reverse checked	Selected order by ISBN and check reverse	Ordered by title	E-books are ordered by ISBN In a reverse order	E-books are ordered by ISBN In a reverse order	E-books with no ISBN value are listed last	Omega Tech	3/5/2015
14	P	1.008	Order by subject	Leave everything blank, reverse unchecked, and pick subject for order by	Selected order by subject	Ordered by title	E-books are ordered by subject	E-books are ordered by subject		Omega Tech	3/5/2015
15	P	1.009	Order by subject reverse	Leave everything blank, order by subject and have reverse checked	Selected order by subject and check reverse	Ordered by title	E-books are ordered by subject In a reverse order	E-books are ordered by subject In a reverse order		Omega Tech	3/5/2015
16	P	1.010	Search by all	leave everything as it was and type a search keyword	Fill out a search keyword and leave everything else the same	Ordered by title with all books displayed	E-books with search keyword are displayed	E-books with search keyword are displayed		Omega Tech	3/5/2015
17	P	1.011	Search by title	leave everything as it was and type a search keyword and choose search by title	Fill out a search keyword and choose search by title	Ordered by title with all books displayed	E-books with search keyword in title are displayed	E-books with search keyword in title are displayed		Omega Tech	3/5/2015
18	P	1.012	Search by author	leave everything as it was and type a search keyword and choose search by author	Fill out a search keyword and choose search by author	Ordered by title with all books displayed	E-books with search keyword in author are displayed	E-books with search keyword in author are displayed		Omega Tech	3/5/2015
19	P	1.013	Search by subject	leave everything as it was and type a search keyword and choose search by subject	Fill out a search keyword and choose search by subject	Ordered by title with all books displayed	E-books with search keyword in subject are displayed	E-books with search keyword in subject are displayed		Omega Tech	3/5/2015
20	P	1.014	Search by ISBN	leave everything as it was and type a search keyword and choose search by ISBN	Fill out a search keyword and choose search by ISBN	Ordered by title with all books displayed	E-books with search keyword in ISBN are displayed	E-books with search keyword in ISBN are displayed		Omega Tech	3/5/2015
21	P	1.015	Search by description	leave everything as it was and type a search keyword and choose search by description	Fill out a search keyword and choose search by description	Ordered by title with all books displayed	E-books with search keyword in description are displayed	E-books with search keyword in description are displayed		Omega Tech	3/5/2015
22	P	1.016	Clear Filter	Do a search and then hit clear filters	Click on clear filters after a search was executed	Ordered by title, search key 'helps', and search by description	Clears all filters and displays all e-books ordered by title	Clears all filters and displays all e-books ordered by title		Omega Tech	3/5/2015

23	F	1.017	Check out to Gale Virtual Reference library	click on checkout on a book by Gale Virtual Reference Library	Click on checkout	On page display	On page checkout of the desired e-book on Gale Virtual Reference Library website	Logs the user into Gale Virtual Reference and displays that page	Change IE security settings to low and it will work.	Omega Tech	3/5/2015
24	F	1.018	Check out to Rosen Learning Center	click on checkout on a book by Rosen Learning Center	Click on checkout	On page display	On page checkout of the desired e-book on Rosen Learning Center website	Displays Rosen Learning Center's log in page	Change IE security settings to low and it will work.	Omega Tech	3/5/2015
25	P	1.019	Click on LEAP logo	Click on LEAP logo	Click on LEAP logo	On page display	Redirected to display page	redirected to display page with all books displayed by order title		Omega Tech	3/5/2015
26	P	1.020	Click on Home button	Click on Home button	Click on Home button	On page display	Redirected to display page	redirected to display page with all books displayed by order title		Omega Tech	3/5/2015
27	P	1.021	Logout	Click on Logout	Click on Logout	On page display	Redirected to login page with a successful log out message	Redirected to login page with a successful log out message		Omega Tech	3/5/2015
28	F	= Unit Summary		90% passing		19 passed		Date of last test =		3/5/15	
29		21 tests				2 failed					

15. Future Sprints

For our fourth sprint, we will focus on adding several items and functionalities to our existing code. One update we will make will be to update the book and user databases to allow for Gale resources to be displayed based on a user's district. Another change we will make to our existing code is that we will incorporate Overdrive into our display and checkout e-book processes. We will also enable administrators to make changes to the times when the website scraper updates LEAP's book database. Lastly, we will allow administrators to toggle whether or not LEAP interacts with each third party website.

For our fifth sprint, we will focus on adding administrative interfaces for modifying accounts as well as enabling designated users to reset their own passwords should they forget. Our first goal will be creating interfaces to allow teachers to modify their students' accounts, administrators to modify teacher and student accounts, and the super administrator to modify student, teacher, and administrator accounts. In addition, we will enable older students, teachers, administrators, and the super administrator to reset a forgotten password by choosing to receive an email from the system. That email will link the recipient back to the LEAP website where they will be provided with a form to create their new password.

For our sixth and final sprint, we will focus on generating statistics and displaying those statistics to administrators. The specifics of these statistics have yet to be discussed with the clients.

16. Appendices

16.1 Appendix A: Cross Reference Index

3. UML Use Case Diagram	Error! Bookmark not defined.
3.1 UML Use Case Legend	Error! Bookmark not defined.
3.2 UML Use Case Diagram	Error! Bookmark not defined.
4. UML Deployment Diagram	Error! Bookmark not defined.
4.1 UML Deployment Diagram Legend	Error! Bookmark not defined.
4.2 UML Deployment Diagram	Error! Bookmark not defined.
5. UML Activity Diagram	Error! Bookmark not defined.
5.1 UML Activity Diagram Legend	Error! Bookmark not defined.
5.2 Activity Diagram: Login	Error! Bookmark not defined.
5.3 Activity Diagram: Display and Checkout	16
6. Website Map	Error! Bookmark not defined.
6.1 Website Legend	Error! Bookmark not defined.
6.2 Website Map	Error! Bookmark not defined.
7. Data Flow Diagrams	Error! Bookmark not defined.
7.1 Data Flow Legend	Error! Bookmark not defined.
7.2 Context Diagram	Error! Bookmark not defined.
7.3 Level 0 Diagram	Error! Bookmark not defined.
7.3.1 Part 1 of the Level 0 Diagram	Error! Bookmark not defined.
7.3.2 Part 2 of the Level 0 Diagram	Error! Bookmark not defined.
7.4 Level 1 Diagrams	Error! Bookmark not defined.
7.4.1 Login	Error! Bookmark not defined.
7.4.2 Display E-books	Error! Bookmark not defined.
7.4.3 Move to Checkout	Error! Bookmark not defined.
7.4.4 Password Reset	Error! Bookmark not defined.
7.4.5 Modify Accounts	Error! Bookmark not defined.
7.4.6 Modify Third-party Website Information	Error! Bookmark not defined.
7.4.7 View Statistics	Error! Bookmark not defined.

[7.5 Level 2](#)**Error! Bookmark not defined.**
[7.5.1 Display E-books \(2.3\)](#)**Error! Bookmark not defined.**
[7.5.2 Edit Account \(5.5\)](#)**Error! Bookmark not defined.**

16.2 Appendix B: Source of Information

Our clients, J'aimé Pfeiffer and Jen Cannell will serve as our primary sources of information throughout the project. We will actively communicate with them to ensure that the project meets all of their requirements and specifications. Additionally, we will use our professors, Dr. Lim and Dr. Fryling as resources for information that cannot be provided by the client

16.3 Appendix C: Glossary of Terms

Activity Diagram: A flow chart to represent the flow from one activity to another activity. The activity can be described as an operation of the system.

Administrators: A user type of LEAP defined in the User Case Narrative

BOCES: Boards of Cooperative Educational Services

Chrome: A web browser created by Google Inc.

Data Dictionary: A set of information describing the contents, format, and structure of a database and the relationship between its elements, used to control access to and manipulation of the database.

Data Flow Diagram: A representation of how data will move and interact throughout a system.

Firefox: A web browser created by the Mozilla Foundation.

GB: Gigabyte

GHz: Gigahertz

Internet Explorer: A web browser created by Microsoft Inc.

L.E.A.P: Lightweight E-Book Access Platform, this software project.

Safari: A web browser created by Apple Inc.

UML Deployment Diagram: Used to visualize the topology of the physical components of a system where the software components are deployed.

UML Use Case Diagram: A diagram created to represent users' interactions with a system.

Younger Students: A user type of LEAP defined in the User Case Narrative

Website Map: Is a list of pages of a web site accessible to users.

16.4 Appendix D: Timeline

ID	Task Name	Start	Finish	Duration	Jan 2015			Feb 2015				Mar 2015				Apr 2015					
					1/11	1/18	1/25	2/1	2/8	2/15	2/22	3/1	3/8	3/15	3/22	3/29	4/5	4/12	4/19	4/26	
1	Detailed Design	1/12/2015	3/11/2015	43d																	
2	Detailed Design Documents Due	1/12/2015	3/6/2015	40d																	
3	Detailed Design Presentation	3/11/2015	3/11/2015	1d																	
4	Acceptance Test	3/12/2015	4/27/2015	33d																	
5	Acceptance Test Documents Due	4/22/2015	4/22/2015	1d																	
6	Acceptance Test Presentation	4/27/2015	4/27/2015	1d																	
7	Client Meetings	1/12/2015	4/27/2015	76d																	
8	Team Meetings	1/12/2015	4/27/2015	76d																	

16.5 Appendix E: Link for Code

In the interest of security, we have not included the code for LEAP in this document. However, the code is on GitHub and any interested parties can request permission to view the source at this link:

<https://github.com/SienaCollegeSoftwareEngineering/2014-15-Team-Documentation---Omega-Tech>

However, for those wishing to visit the LEAP website, it can be accessed at this link:

http://oraserv.cs.siena.edu/~perm_omega/leap