

# Virtual Network Device Mapping System

Requirements Specification

By

MAJIK Software Solutions

October 25, 2006

# Welcome

Mr. Ken Swarner

Systems & Operations Manager

School of Science

Siena College

&

Mr. Eric Crossman

Assistant Systems and Operations Manager

School of Science

Siena College

# Team MAJIK

- Kelly Morgan – Team Leader
- Amanda Danko – Information Specialist
- Kevin Johnson – System Administrator
- Ian Kost – Project Engineer
- Mark Riley - Webmaster

# Agenda

- Introduction – Kelly Morgan
- Use Cases – Ian Kost
- Data Flow Diagrams – Ian Kost
- Functional Requirements Inventory – Kevin Johnson
- Prototype Screens – Kevin Johnson
- Going Forward... – Mark Riley

# Requirements Specification

- Identifies, in detail, the functional and non-functional requirements
- Outline of what the system MUST do

# Agenda

- Introduction – Kelly Morgan
- Use Cases – Ian Kost
- Data Flow Diagrams – Ian Kost
- Functional Requirements Inventory – Kevin Johnson
- Prototype Screens – Kevin Johnson
- Going Forward... – Mark Riley

# Use Cases

- Three Users
  - Administrator User
  - Faculty/Staff User
  - Special User

# Agenda

- Introduction – Kelly Morgan
- Use Cases – Ian Kost
- Data Flow Diagrams – Ian Kost
- Functional Requirements Inventory – Kevin Johnson
- Prototype Screens – Kevin Johnson
- Going Forward... – Mark Riley



# Data Flow Diagrams

- Shows Processes and Data Flow within the System
- Diagrams Included
  - Context Free
  - Level 0
  - Level 1
  - Level 2

# Agenda

- Introduction – Kelly Morgan
- Use Cases – Ian Kost
- Data Flow Diagrams – Ian Kost
- Functional Requirements Inventory – Kevin Johnson
- Prototype Screens – Kevin Johnson
- Going Forward... – Mark Riley

# Functional Requirements Inventory

- Administrator User
  - View all floors and rooms of Science buildings
  - View all devices on the network
  - View all information about each device
  - Edit information regarding devices
  - Search
  - Grant access to special users

# Functional Requirements Inventory

- Faculty/Staff User
  - View rooms only related to them (office, classroom)
  - View information about devices only related to them
  - Search on a limited criteria

# Functional Requirements Inventory

- Special User
  - Use varies depending on privileges granted to them by administrator

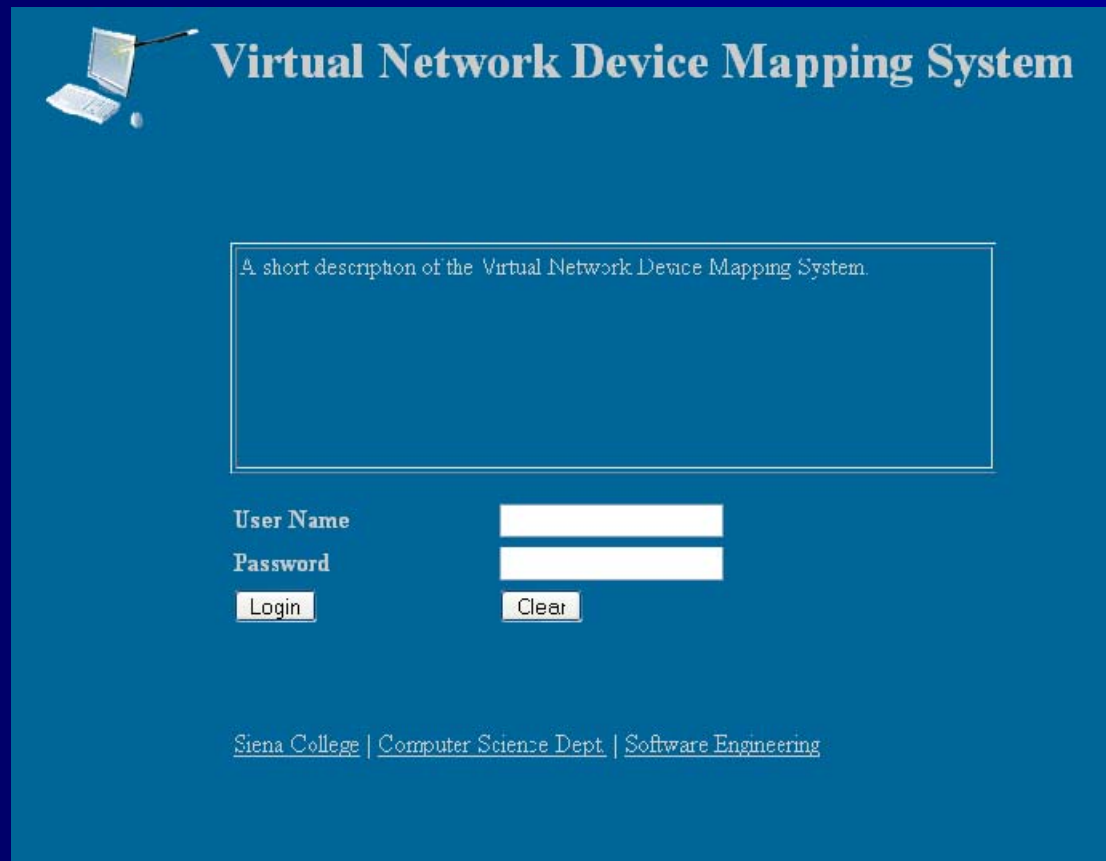
# Agenda

- Introduction – Kelly Morgan
- Use Cases – Ian Kost
- Data Flow Diagrams – Ian Kost
- Functional Requirements Inventory – Kevin Johnson
- Prototype Screens – Kevin Johnson
- Going Forward... – Mark Riley

# Prototypes

- Index Screen
- Logged In Screen
- Administrator Control Panel Screen
- Floor Plan Layout Screen
- Room Layout Screen
- Search Screen

# Index Prototype Screen



The image shows a prototype screen for a 'Virtual Network Device Mapping System'. The screen has a dark blue background. In the top left corner, there is a small icon of a laptop with a pen pointing to it. To the right of the icon, the title 'Virtual Network Device Mapping System' is displayed in a light blue, serif font. Below the title, there is a large, empty rectangular box with a thin white border. Inside this box, at the top, is the text 'A short description of the Virtual Network Device Mapping System.' in a small, light blue font. Below this box, there are two labels: 'User Name' and 'Password', both in a light blue font. To the right of 'User Name' is a white rectangular input field. To the right of 'Password' is another white rectangular input field. Below the 'User Name' input field is a small button labeled 'Login'. Below the 'Password' input field is a small button labeled 'Clear'. At the bottom of the screen, there is a footer in a light blue font that reads 'Siena College | Computer Science Dept. | Software Engineering'.

**Virtual Network Device Mapping System**

A short description of the Virtual Network Device Mapping System.

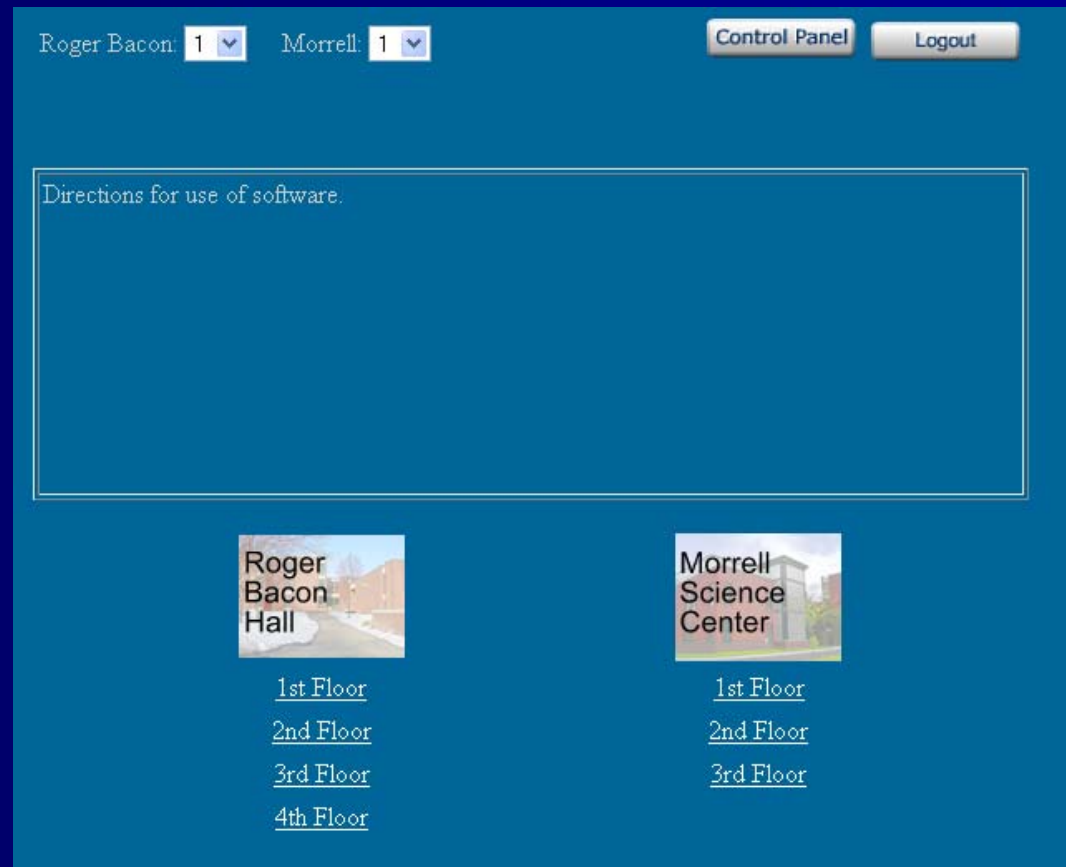
User Name

Password

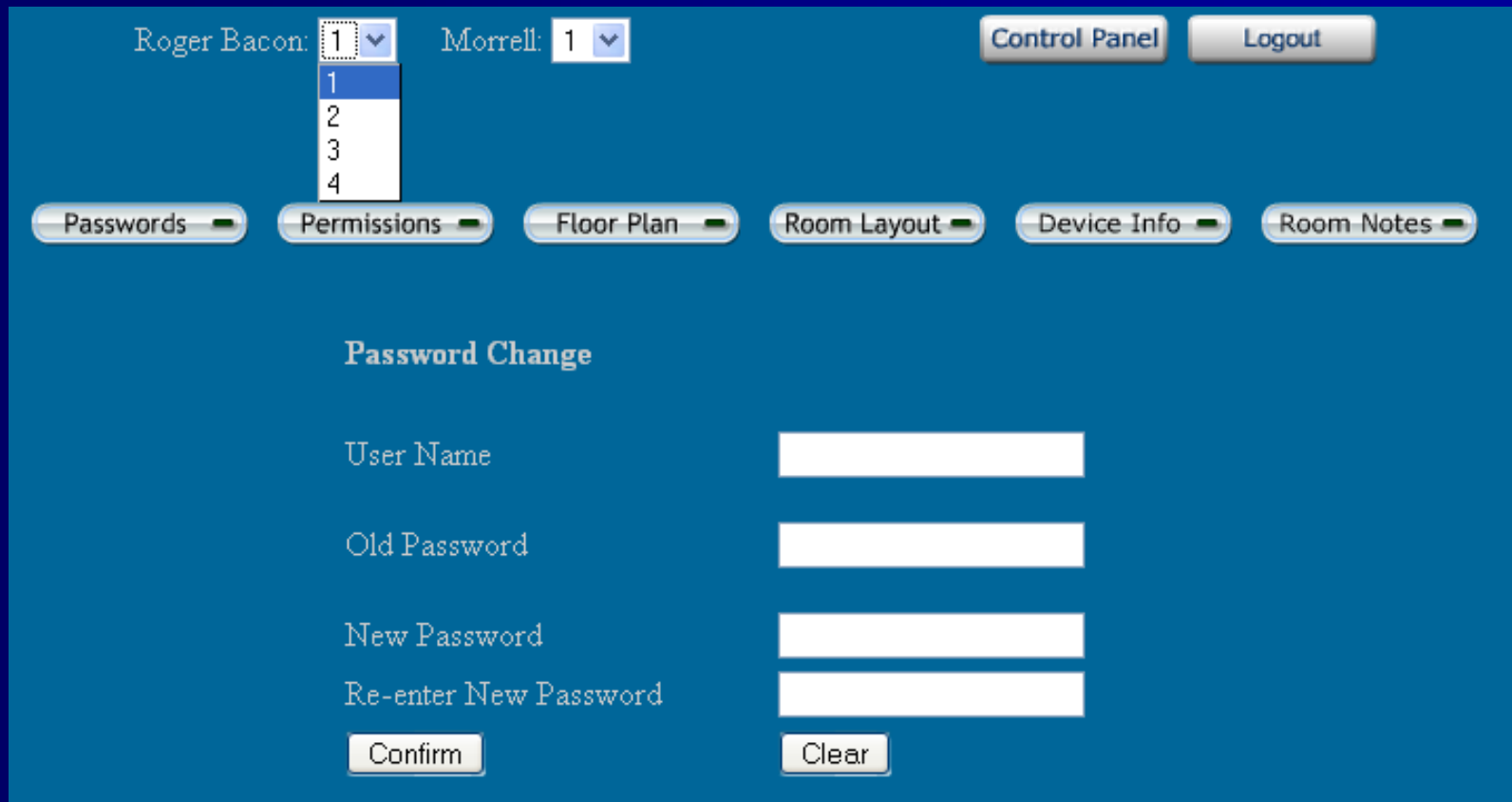
[Siena College](#) | [Computer Science Dept.](#) | [Software Engineering](#)



# Logged In Prototype Screen



# Control Panel Prototype Screen



The image shows a prototype of a control panel screen. At the top, there are two dropdown menus: "Roger Bacon:" with a value of "1" and "Morrell:" with a value of "1". To the right are two buttons: "Control Panel" and "Logout". Below these are six menu items: "Passwords", "Permissions", "Floor Plan", "Room Layout", "Device Info", and "Room Notes". The "Passwords" menu item is selected, and a dropdown menu is open showing the numbers 1, 2, 3, and 4. Below the menu items is a "Password Change" section. It contains four text input fields: "User Name", "Old Password", "New Password", and "Re-enter New Password". At the bottom of this section are two buttons: "Confirm" and "Clear".

Roger Bacon: 1 Morrell: 1 Control Panel Logout

1  
2  
3  
4

Passwords Permissions Floor Plan Room Layout Device Info Room Notes

**Password Change**

User Name

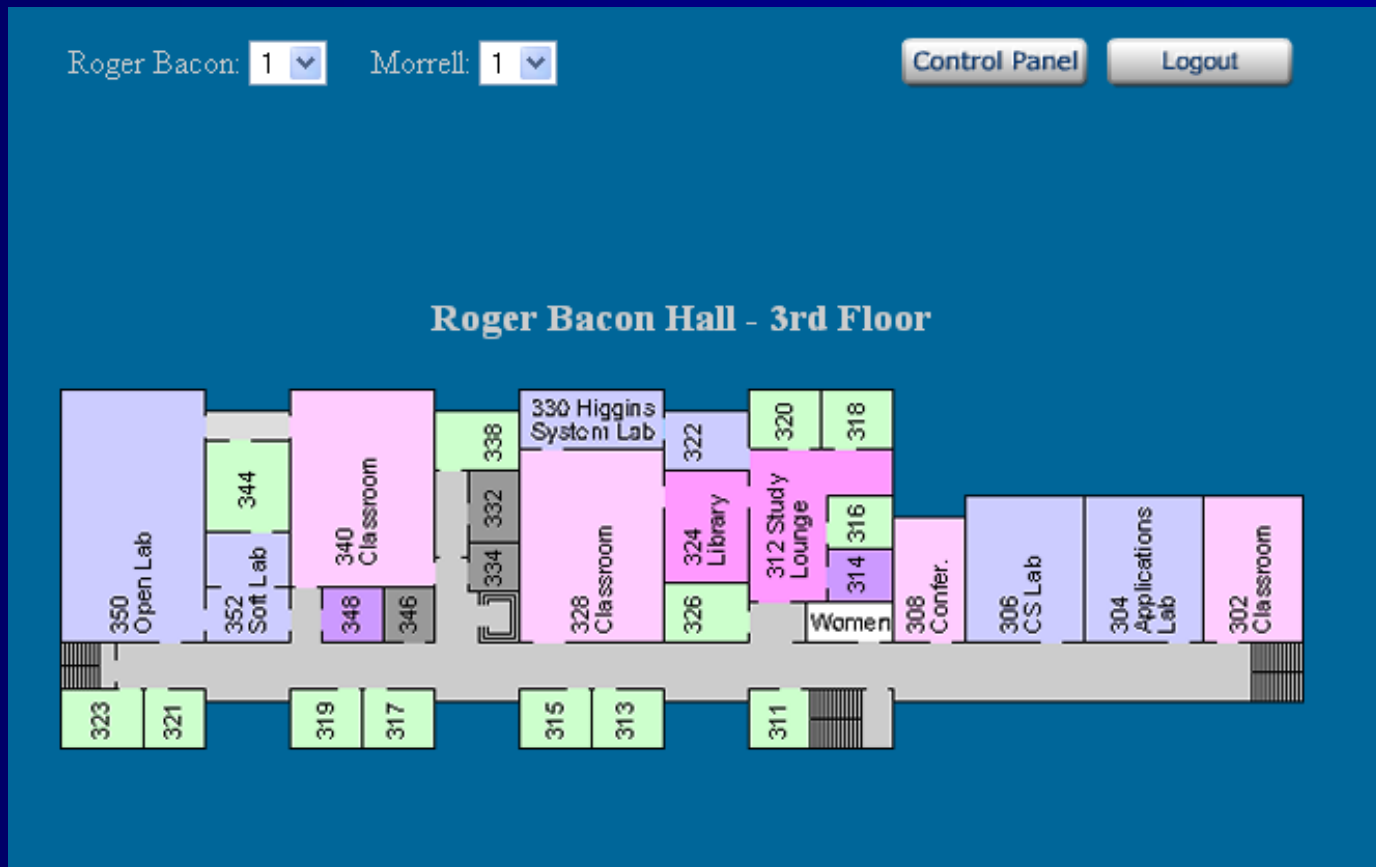
Old Password

New Password

Re-enter New Password

Confirm Clear

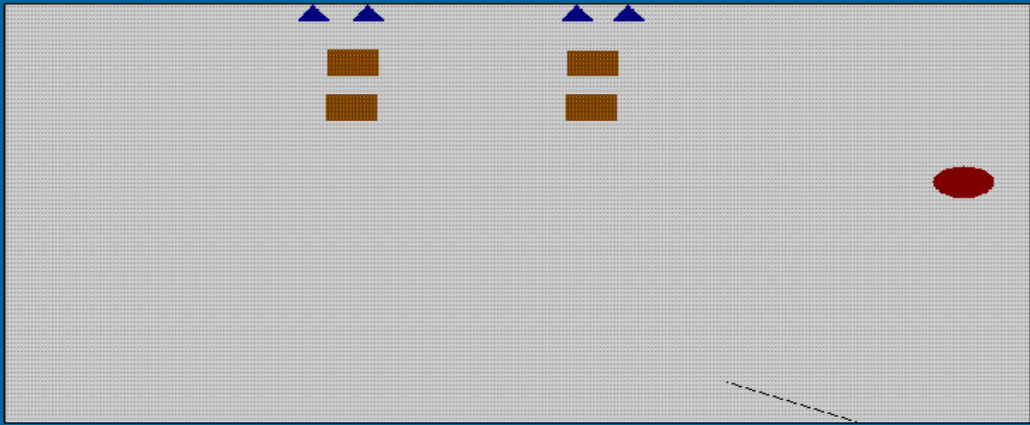
# Floor Plan Prototype Screen



# Room Layout Prototype Screen

Roger Bacon:  Morrell:

**Roger Bacon Hall - 3rd Floor - Room #306**



**Legend:** ● Printer ▲ Wall Box ■ Computer

Device Information is displayed here after a device has been selected.

# Search Prototype Screen

Advanced Search

**Advanced Search Options**

Building:   Floor:   Room Number:

Device Type:   Information Type:

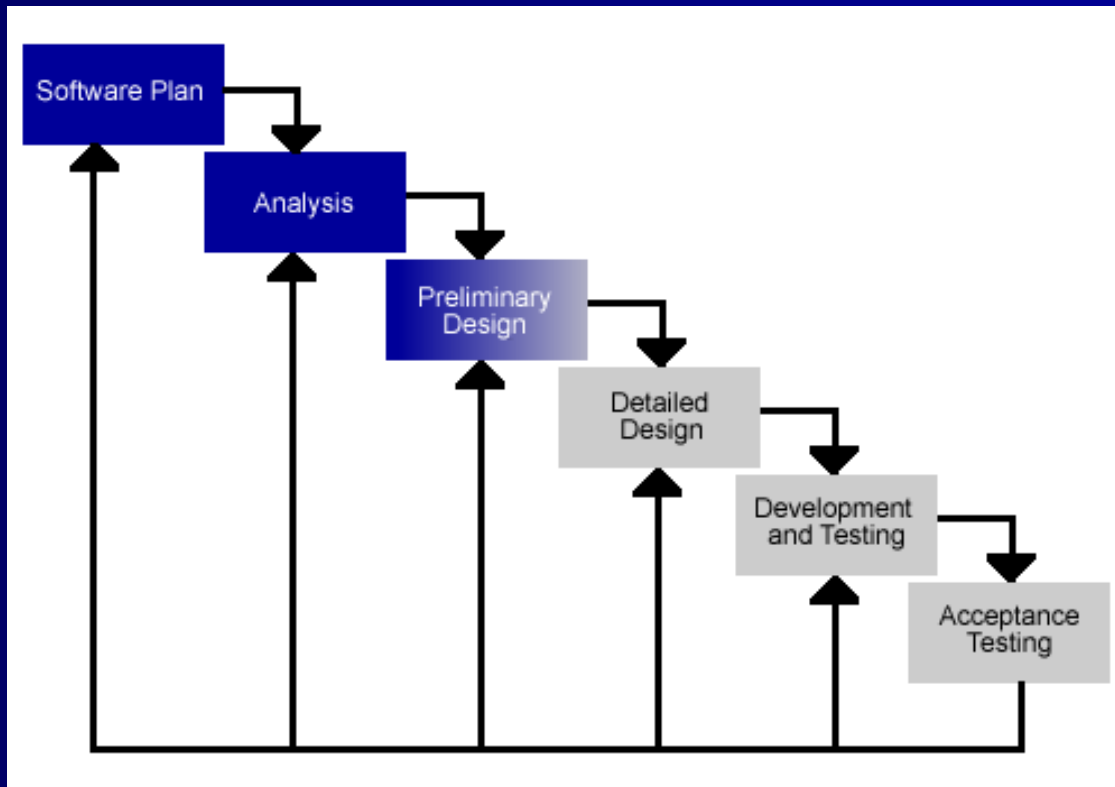
# Agenda

- Introduction – Kelly Morgan
- Use Cases – Ian Kost
- Data Flow Diagrams – Ian Kost
- Functional Requirements Inventory – Kevin Johnson
- Prototype Screens – Kevin Johnson
- Going Forward... – Mark Riley

# Summary

- Any Questions?
- Coming Up...

# Project Status

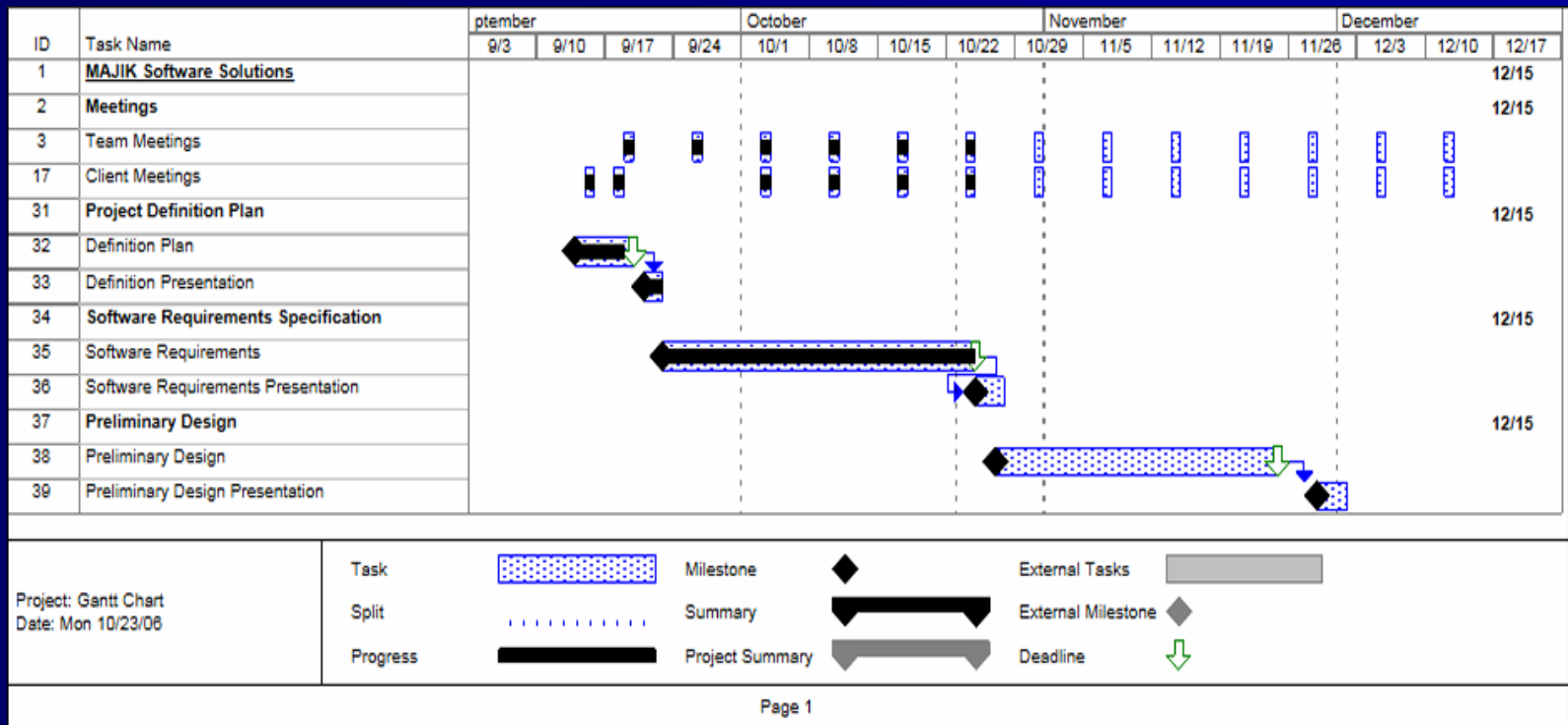




# Supporting Documentation

- Preliminary Design
  - Document: November 27, 2006
  - Presentation: November 29, 2006
- Detailed Design (Tentative)
  - Document: February 28, 2007
  - Presentation: March 2, 2007
- Acceptance Test (Tentative)
  - April 15, 2007

# Timeline



# Thank You!

We look forward to continue to work with you on this project.