

-

# CCRS

## Comprehensive Conference Registration System Acceptance Test

---

Requested by:

Dr. Darren Lim  
Professor of Computer Science  
Siena College  
Loudonville, NY

Prepared by:



S.E.E. Solutions  
Kelly Bedard – Document Developer and Analyst  
Tyler Mann – DBA and Co-Webmaster  
Jess Reinhardt – Team Leader  
Brett Rudloff – Webmaster  
Carl Tompkins – Lead Developer

**May 1st, 2013**

## Contents

### Contents

Contents.....	2	
Contents.....	2	
1 Product Overview and Summary.....	6	
2 User Case Narratives.....	6	
2.1 Conference Chair.....	7	
2.2 Registration Committee Chair.....	7	
2.3 The Review Committee Chair.....	8	
2.4 Committee Chair.....	8	
2.5 Conference Attendee.....	8	
2.6 Presenter.....	9	
2.7 Vendor.....	9	
2.8 Faculty Advisor.....	9	
2.9 Programming Contest Participant.....	10	
2.10 Submitter.....	10	
2.11 Reviewer.....	11	
3 Functional Requirements Inventory.....	11	
3.1 System Requirements.....	11	
3.2 All Users.....	11	
3.3 Conference Chair.....	12	
3.4 Committee Chair.....	12	
3.5 Registration Chair.....	12	
3.6 Review Chair.....	12	
3.7 Attendee.....	12	
3.8 Vendor.....	12	
3.9 Presenter.....	13	
3.10 Programming Contest Participant.....	13	
3.11 Faculty Advisor.....	13	
3.12 Reviewer.....	13	
3.13 Submitter.....	13	
4 Non-Functional Requirements Inventory.....	14	
S.E.E. Solutions	Acceptance Test	2

## CCRS –Table Of Contents

5 Future Enhancements .....	14
6 Production Screens .....	15
6.1 Log In.....	15
6.2 Registration.....	16
6.3 Conference Chair Pages .....	17
Set Up Schedule Page .....	17
Configure Conference Page .....	17
The Conference Chair can configure many aspects of the conference on the configuration page. The aspects include interests for papers, important dates for the conference, dates of the conference, meals for the conference, conference logos, and locations for the presentations at the conference. ....	17
Notify Pages .....	18
6.4 Attendee Pages .....	19
6.5 Review Pages.....	20
6.6 Submitter Pages .....	21
7 Logical Data Dictionary .....	21
8 Development and Production Environment .....	22
8.1 Development Environment .....	22
8.2 Production Environment .....	22
9 Deliverables .....	23
10 Data Flow Diagrams.....	23
10.1 Data Flow Legend.....	24
10.2 Context Diagram.....	25
10.3 Level 0 Diagram.....	26
10.4 Level 1 Diagrams.....	27
10.4.1 Authenticate Level 1 .....	27
10.4.2 Configure 1.0 Level 1 .....	28
10.4.3 Notify 3.0 Level 1 .....	29
10.4.4 Register 6.0 Level 1 .....	30
10.4.5 Review 7.0 Level 1 .....	31
10.4.6 Set Up Schedule 2.0 Level 1 .....	32
10.4.7 Submit 5.0 Level 1 .....	33
10.5 Level 2 Diagrams.....	34
10.5.1 Authenticate 4.1 Level 2.....	34
10.5.2 Configure 1.1 Level 2 .....	35

## CCRS –Table Of Contents

10.5.3 Notify 3.1 Level 2 .....	36
10.5.4 Register 6.1 Level 2 .....	37
10.5.5 Review 7.1 Level 2 .....	38
10.5.6 Set Up Schedule 2.1 Level 2.....	39
10.5.7 Submit 5.1 Level 2 .....	40
10.6 Level 3 Diagrams.....	41
10.6.1 Register Input Meal Info Level 3.....	41
10.6.2 Configure Accounts Level 3 .....	42
10.6.3 Configure Conference .....	43
10.6.4 Review Info Level 3.....	44
11 Testing Plan .....	45
11.1 Overview & Strategy .....	45
11.2 Acceptance Test – Acceptance Criteria.....	45
11.2.1 Functional Requirements Inventory.....	45
11.2.1.1 System Requirements.....	46
11.2.1.2 All Users.....	46
11.2.1.3 Conference Chair .....	46
11.2.1.4 Committee Chair .....	46
11.2.1.5 Registration Chair .....	47
11.2.1.6 Review Chair .....	47
11.2.1.7 Attendee.....	47
11.2.1.8 Vendor.....	47
11.2.1.9 Presenter.....	47
11.2.1.10 Programming Contest Participant .....	48
11.2.1.11 Faculty Advisor.....	48
11.2.1.12 Reviewer .....	48
11.2.1.13 Submitter.....	48
11.2.2 Nonfunctional Requirements Inventory .....	48
11.3 Unit Tests .....	49
Appendix .....	50
Appendix A – Glossary of Terms .....	51
Appendix B –Gantt Chart.....	52
Appendix C – Data Dictionary.....	53
Appendix D – Test Results .....	54

# CCRS –Table Of Contents

## **1 Product Overview and Summary**

The Consortium for Computing Sciences in Colleges – Northeastern Region (CCSCNE) has participants involved in many different aspects of the conference. The participants include the Conference Chair, Committee Chairs, and attendees, which consist of Reviewers, Presenters and Vendors. People can also submit different types of submissions, but do not necessarily attend the conference. The client, Dr. Lim, has asked S.E.E. Solutions to create a web-based interface for registration. With this, the people involved will be able to easily register for the system. The Conference Chair should be able to configure the conference set up different things, such as rooms available, meal choices and prices. After a conference is set up, users can begin registering for the conference. Once a user is registered, Dr. Lim would like to present the same user with only information that is relevant to the role or roles the user signed up as. For example, if a presenter signs on, the presenter will be able to see when and where the presentation is. In addition to being able to register, Dr. Lim would like to have the system be able to let users submit different types of submissions and review them. After the submissions have been reviewed, the committee chair should be able to accept and reject certain submissions. The system should also have the ability to create a schedule for the conference. This schedule will include all the times that presenters are going, when there will be vendors, and when/if there are breaks for the conference. Lastly, the Conference Chair should have the ability to change the schedule if needed.

## **2 User Case Narratives**

User Case Narratives describe the users that will interact with the systems. Each user case narrative will explain how that particular user will interact with the system. The users that will interact with S.E.E. Solutions' Comprehensive Conference Registration System (CCRS) will be described in the following paragraphs.

## **2.1 Conference Chair**

The Conference Chair is in charge of everything in the conference. The Conference Chair is also the system administrator.

The Conference Chair logs on to CCRS and is able to see who has registered for the Consortium for Computing Sciences in Colleges Northeastern Region (CCSCNE). Once the Conference Chair enters a unique username and password the Conference Chair is able to access any information from the conference. The Conference Chair can set details about the conference including what days the conference is, what meals will be provided, what topics the conference is about, what payment options there are, deadlines for submissions, room locations, and the logos for the conference. The Conference Chair can also check the information from people who have registered to make sure everyone has paid. The Conference Chair can also view the submitted material for the conference. The Conference Chair is able to see the reviews on all submissions to the conference. The Conference Chair is able to have some input as to what submissions are accepted into the conference.

The Conference Chair has the ability to create accounts in CCRS and give the accounts access to certain information. The Conference Chair creates an account for the Committee Chairs. The Conference Chair adds a username and password for each Committee Chair. The Conference Chair limits the information each Committee Chair can see based on what is important for to get the job done.

The Conference Chair is able to see the schedule created by the system once all the submissions have been selected. The Conference Chair can examine this schedule and make any desired changes. The Conference Chair can update the schedule information up to the date of the conference.

## **2.2 Registration Committee Chair**

The Registration Committee Chair keeps track of all the registration information.

The Registration Committee Chair logs into CCRS with the username and password provided by the Conference Chair and immediately sees the list of people that have registered for the conference. The Registration Committee Chair can send emails about conference updates to everyone that has already registered for the conference.

The Registration Committee Chair can also email for the people who have not paid for the conference yet. While still logged in o CCRS the Registration Committee Chair can examine the list of people is able to easily determine who has paid and who has not. The Registration Chair is able to send an email to the people who have not paid yet. Once payment is received the Registration Chair is able to update the payment information for each the appropriate attendee.

### **2.3 The Review Committee Chair**

The Review Committee Chair is in charge of making sure all submissions have reviews.

The Review Committee Chair logs into CCRS with the username and password provided by the Conference Chair. The Review Committee Chair is able to see all the submissions that have been submitted to CCRS. The Review Committee Chair has access to all the reviews and is able to make sure each submission has a review. The Review Committee Chair can reassign submissions to a new Reviewer if needed.

### **2.4 Committee Chair**

The Committee Chair is in charge of their assigned committee. The committees are for panels, posters, tutorial, demo, workshop, and paper.

The Committee Chair will be able to log in to CCRS with the username and password provided to them by the Conference Chair. Once logged in the Committee Chair can change the password that was provided by the Conference Chair. The Committee Chair can have access to all information of that committee. The Committee Chair has access to all of the submissions of the particular type and the reviews on the submissions. The Committee Chair helps decide which submissions of the particular type get selected to present at the conference. The Committee Chair has access to each Submitter's email and notifies the Submitters of acceptance or rejection via email.

### **2.5 Conference Attendee**

A Conference Attendee is anyone who physically attends the conference. A Conference Attendee includes a Vendor, a Presenter, a Programming Contest Participant, and a Faculty Advisor.

A Conference Attendee creates a username and password for CCRS. The Conference Attendee is then able to log into CCRS to register for the CCSCNE conference. The Conference Attendee enters all the information necessary for registration to the conference. The Conference Attendee then pays the registration fee for the conference. The Conference Attendee can select many different types of roles at the conference and can select different meal options based on what the Conference Chair configures. Once the information is submitted to CCRS database, CCRS sends a confirmation email to the Conference Attendee. The Conference Attendee can log back into CCRS to change any information necessary.



## **2.6 Presenter**

A Presenter is an attendee who presents a submission at the conference. After a Reviewer has accepted the Presenter, the Presenter is given a time slot to present.

A Presenter will be notified via email upon acceptance into the conference. The Presenter will be able to go to CCRS and will be able to easily register a username and password. Once a Presenter is logged on, the Presenter will be shown all of the information that is necessary for the role. This information includes the time the Presenter will be presenting and the place of the presentation. A Presenter will be able to log out of the system at any time the Presenter wants.

## **2.7 Vendor**

A Vendor is someone who has been given permission by the Conference Chair to attend the conference in order to promote a product or company.

A Vendor will have the ability to go to CCRS and register a unique username and password. Once the Vendor is logged on the Vendor will be presented with material that is unique to the Vendor. When the Vendor is logged on the Vendor will have the option of entering how much space the Vendor needs. The Vendor will also be able to request certain things that the Vendor needs such as audio and visual things. For example, these will include televisions, extension cords, speakers, etc... The Vendor will be able to log out of the system at any time the Vendor wants.

## **2.8 Faculty Advisor**

A Faculty Advisor is advises and programming contest team that registered for the conference.

Each programming contest team participating in the CCSCNE contest will have one Faculty Advisor. The Faculty Advisor will be able to register the Faculty Advisor's programming contest team via CCRS. The Faculty Advisor will register team details such as the college the team represents and names and emails of Programming Contest Participants on the team. The Faculty Advisor will pay for the Faculty Advisor's registration fee during this registration. Once the Faculty Advisor has registered, CCRS will send a confirmation email to the Faculty Advisor.

### **2.9 Programming Contest Participant**

A Programming Contest Participant is part of a programming contest team that takes part in the programming contest at the conference.

Each Programming Contest Participant must register individually. The Faculty Advisor must register for the conference before the Programming Contest Participant can register for the conference. CCRS will send a link to the CCRS registration page via email to the Programming Contest Participant once the Faculty Advisor registers for the programming contest. The Programming Contest Participant will also be able to go to the CCRS homepage and register as a participant in the programming contest if the Faculty Advisor has already registered. The Programming Contest Participant will be able to fill in the registration form and pay the registration fee. Once the Programming Contest Participant has submitted, CCRS will send a confirmation email to the participant and the Faculty Advisor of the team.

### **2.10 Submitter**

A Submitter is someone who will enter a submission. Submissions can include papers, posters, demos, tutorials, panel, and workshop. After the submission is entered the submission will be reviewed. If the submission is accepted the Submitter will become a Presenter.

The Submitter will self register with CCRS. While registering the Submitter will provide information such as name and e-mail address. The Submitter will receive a confirmation email after registration. The Submitter will upload the submission or submissions to be reviewed and provide the topic of each submission. The Submitter will receive an email when the reviews of the submissions are viewable. The Submitter will log in to CCRS to view the reviews. The Committee Chair will notify the Submitter of acceptance or rejection.

### **2.11 Reviewer**

A Reviewer is someone who evaluates all submissions that are sent through the system. The Reviewer will not review anything that is from the Reviewer's own affiliated organization or outside the area of the Reviewer's expertise or submission category.

The Reviewer will self register with CCRS. While registering, the Reviewer will provide information such as name, e-mail address, and specific areas of interest that could be subjects of submissions. The Reviewer will receive a confirmation email after registration. The Reviewer will receive an email when there are submissions on CCRS that have been assigned to review. The Reviewer will sign in to CCRS and be able to view a list of submissions to review. The Reviewer will download submissions for review. The Reviewer will upload the numerical and written reviews for each submission

## **3 Functional Requirements Inventory**

CCRS will need to be tested on and function properly on the four most popular browsers: Internet Explorer, Mozilla Firefox, Google Chrome, and Safari.

### **3.1 System Requirements**

- System will automatically generate a schedule
- Schedule will have drag and drop capabilities
- System will assign reviewers submissions
- Pages will load using Ajax
- System will change submitter to presenter if and when the submitter has been accepted
- System will automatically e-mail users when they have been accepted for certain roles

### **3.2 All Users**

All users have the following functional requirements:

- Will be able to log into CCRS with a provided username and password. An incorrect username and/or password will result in an appropriate error message
- All users will be able to change their account settings such as password and number of guests

### **3.3 Conference Chair**

- Will be able to configure user accounts for other users
- Accounts will be inserted into appropriate database tables
- Will be able to configure payment for users
- Proper fields will be updated in database tables
- Will be able to configure or edit schedule for event
- Will be able to configure meals options for the conference
- Will be able to notify applicants if they have been accepted as a reviewer and a vendor

### **3.4 Committee Chair**

- Will be able to notify appropriate users based on membership in committee.

### **3.5 Registration Chair**

- Will be able to notify appropriate users for required payment.

### **3.6 Review Chair**

- Will be able to notify appropriate reviewers if other reviews are needed.

### **3.7 Attendee**

- Will be able to register for conference including personal information, meal selection, and payment
- All required fields will be checked for proper input for nulls and format and error message produced for any issues
- Accounts and appropriate information will be inserted to appropriate database tables

### **3.8 Vendor**

- Will be able to register for conference including personal information, meal selection, and payment
- All required fields will be checked for proper input for nulls and format
- Accounts and appropriate information will be inserted to appropriate database tables
- Will be able to check the place where they will be set up
- Request Audio/Visual equipment they will need

### **3.9 Presenter**

- Will be able to register for conference including personal information, meal selection, and payment
- All required fields will be checked for proper input for nulls and format
- Accounts and appropriate information will be inserted to appropriate database tables.
- Will be able to check the place where they will be presenting

### **3.10 Programming Contest Participant**

- Will be able to register for conference including personal information, meal selection, and payment
- All required fields will be checked for proper input for nulls and format
- Accounts and appropriate information will be inserted to appropriate database tables

### **3.11 Faculty Advisor**

- Will be able to register for conference including personal information, meal selection, and payment
- All required fields will be checked for proper input for nulls and format
- Accounts and appropriate information will be inserted to appropriate database tables

### **3.12 Reviewer**

- Will be able to review appropriate material (panel, poster, tutorial, demo, workshop, paper submissions) assigned to user
- Reviewed comments and results will be added to appropriate database tables and/or appropriate location on web server
- Cannot review papers if affiliated with the school in the submission.

### **3.13 Submitter**

- Will be able to submit appropriate material (panel, poster, tutorial, demo, workshop, paper submissions) based on submission desire
- Submitted comments and results will be added to appropriate database tables and/or appropriate location on web server

#### **4 Non-Functional Requirements Inventory**

Non-Functional requirements are not easily testable and cannot easily be determined if each has been met or unmet. The following is a list of the non-functional requirements for CCRS

- The system will be easily maintained.
- The system will be stable.
- The system will be viewable on multiple browsers.
- The system will run efficiently.
- The system will be user friendly

#### **5 Future Enhancements**

In order to improve CCRS, S.E.E. Solutions has created the following tasks that should be implemented to improve the system:

1. Implement an automatic set schedule feature that creates an optimal conference schedule
2. Integrate the programming contest software with CCRS
3. Allow greater configuration options for the Conference Chair

## 6 Production Screens

The following images are used for feature discovery and outline the functions and ascetics of CCRS.

### 6.1 Log In

**CCRS**  
CCSCNE 2013 is the 18th Annual Conference of the Northeast region of the Consortium for Computing Sciences in Colleges (CCSC). The conference is held in cooperation with the ACM SIGCSE and Upsilon Pi Epsilon Honors Society and is hosted by Siena College in Loudonville, NY.

Email

Password

Remember me  
[Forgot Password?](#)  
[Register for Conference](#)

When a user directs to the CCRS website the user can sign on to CCRS with a correct username and password. If the user does not have a username with CCRS the user can register by clicking on Register for Conference. If the user forgot the password the user can click Forgot Password.

6.2 Registration

CCSCNE Home Register for Conference

## Attendee Registration \* denotes a required field

---

- General Information
- Role Selection
- Attendee Registration
- Reviewer Registration
- Vendor Registration
- Team Registration

Register for Conference

To register for the conference a user can fill out the required fields in the general information section and select the desired roles. The desired roles may or may not have additional required information the user needs to fill out.



### 6.3 Conference Chair Pages

#### Set Up Schedule Page

CCSCNE Home User Home

Role Attendee **Conference Chair** Faculty Advisor Reviewer Submitter

Set Up Schedule **Configure Conference** Notify ▾

Event List **Schedule for Friday April 12th**

Poster Session #1	8:00 AM
Demo Session #1	10:00 AM
Tutorial Session #1	12:00 PM
Lunch	2:00 PM
Programming Contest	4:00 PM
Workshop Session #1	

YOUR ACCOUNT  
[Account Settings](#)  
[Log Out](#)

IMPORTANT DATES  
 12/6 - Important Date 1  
 1/5 - More Stuff to Do

The Conference Chair can set up the schedule with drag and drop capabilities.

#### Configure Conference Page

CCSCNE Home User Home

Role Attendee **Conference Chair** Faculty Advisor Reviewer Submitter

Set Up Schedule **Configure Conference** Notify ▾

[Configure Interests](#)

[Configure Important Dates](#)

[Configure Conference Dates](#)

[Configure Meals](#)

[Configure Logo](#)

[Configure Locations](#)

YOUR ACCOUNT  
[Account Settings](#)  
[Log Out](#)

IMPORTANT DATES  
 12/6 - Important Date 1  
 1/5 - More Stuff to Do

The Conference Chair can configure many aspects of the conference on the configuration page. The aspects include interests for papers, important dates for the conference, dates of the conference, meals for the conference, conference logos, and locations for the presentations at the conference.

### Notify Pages

CCSCNE Home User Home

Role Attendee Conference Chair Faculty Advisor Reviewer Submitter

[Set Up Schedule](#) [Configure Conference](#) Notify ▾

Name	School	Application	Accept/Reject
<a href="#">Tom Jones</a>	<a href="#">Harvard</a>	<a href="#">review_app.pdf</a>	<span style="background-color: green; color: white; padding: 2px 10px;">Accept</span> <span style="background-color: red; color: white; padding: 2px 10px;">Reject</span>

YOUR ACCOUNT

[Account Settings](#)

[Log Out](#)

IMPORTANT DATES

12/6 - Important Date 1

1/5 - More Stuff to Do

CCSCNE Home User Home

Role Attendee Conference Chair Faculty Advisor Reviewer Submitter

[Set Up Schedule](#) [Configure Conference](#) Notify ▾

Submission Name	Submission Name (anon)	Review	Accept/Reject
<a href="#">paper_sub_1.pdf</a>	<a href="#">anon_paper_sub_1.pdf</a>	<span style="background-color: #007bff; color: white; padding: 2px 10px;">Review</span>	<span style="background-color: green; color: white; padding: 2px 10px;">Accept</span> <span style="background-color: red; color: white; padding: 2px 10px;">Reject</span>

YOUR ACCOUNT

[Account Settings](#)

[Log Out](#)

IMPORTANT DATES

12/6 - Important Date 1

1/5 - More Stuff to Do

CCSCNE Home User Home

Role Attendee Conference Chair Faculty Advisor Reviewer Submitter

[Set Up Schedule](#) [Configure Conference](#) Notify ▾

Name	Affiliation	Accept/Reject
<a href="#">Pam Smith</a>	<a href="#">Microsoft</a>	<span style="background-color: green; color: white; padding: 2px 10px;">Accept</span> <span style="background-color: red; color: white; padding: 2px 10px;">Reject</span>

YOUR ACCOUNT

[Account Settings](#)

[Log Out](#)

IMPORTANT DATES

12/6 - Important Date 1

1/5 - More Stuff to Do

The Conference Chair can also notify submitters by accepting or reject the submissions, reviewers by accepting or rejecting the reviewer application, and vendors by accepting or rejecting the vendor application.

### 6.4 Attendee Pages

The screenshot shows the CCRS Attendee page. At the top, there is a navigation bar with 'CCSCNE Home' and 'User Home'. Below this is a role selection bar with options: 'Role', 'Attendee', 'Conference Chair', 'Faculty Advisor', 'Reviewer', and 'Submitter'. A light blue reminder box states: 'Reminder! The conference date is approaching soon!'. Under the heading 'Your meal selections', it lists 'Meal 1: Beef'. On the right side, there is a sidebar with 'YOUR ACCOUNT' containing links for 'Account Settings' and 'Log Out', and 'IMPORTANT DATES' listing '12/6 - Important Date 1' and '1/5 - More Stuff to Do'.

When an Attendee logs in to CCRS the Attendee will see the meal selections chosen when the Attendee registered for the conference.

## 6.5 Review Pages

CCSCNE Home    User Home

Role    Attendee    Conference Chair    Faculty Advisor    **Reviewer**    Submitter

Reviews

- Demo
- Panel
- Paper
- Poster
- Tutorial
- Workshop

Submission Name	Topic	Submission Download	Review
23323	Artificial Intelligence	<a href="#">FantasyAnthoJo01_465.txt</a>	<a href="#">Edit Review</a>

**YOUR ACCOUNT**

[Account Settings](#)

[Log Out](#)

**IMPORTANT DATES**

12/6 - Important Date 1

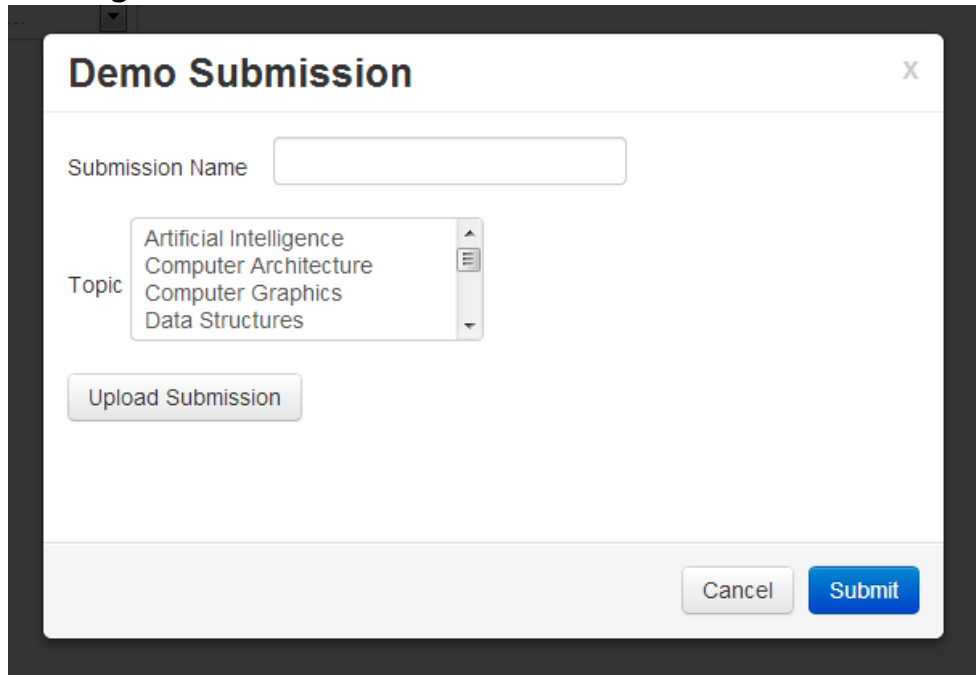
1/5 - More Stuff to Do

### Review - 23323 X

1. Importance of topic to C.S. Education
  - Very important     Moderately important     Not important
2. Interest in topic/timeliness
  - Great     Moderate     Little
3. Originality of the paper
  - Very original     Moderately original     Not original
4. Technical quality and accuracy of the paper
  - Outstanding
  - Good
  - Average
  - Fair
  - Poor
5. Justify your ratings of the importance, interest, originality and accuracy of this paper

When a Reviewer logs in to CCRS the Reviewer will see the submissions that have been assigned to be reviewed. The Reviewer can click on the edit review button and the form will pop up.

## 6.6 Submitter Pages



The screenshot shows a web form titled "Demo Submission" with a close button (X) in the top right corner. The form contains the following elements:

- A text input field labeled "Submission Name".
- A dropdown menu labeled "Topic" with the following options: Artificial Intelligence, Computer Architecture, Computer Graphics, and Data Structures.
- An "Upload Submission" button.
- At the bottom right, there are two buttons: "Cancel" and "Submit".

When a Submitter logs in to CCRS the Submitter will see all the submissions the Submitter has previously submitted. The Submitter can also submit a new submissions and fill out the above form.

## 7 Logical Data Dictionary

The data dictionary is a repository that shows information about the data within CCRS, including format, usage, and examples of correct and incorrect input.

Please see the Appendix C for the data dictionary. A Microsoft Excel file of the data dictionary is also available on the S.E.E. Solutions website.

## 8 Development and Production Environment

### 8.1 Development Environment

The development environment of CCRS is the environment(s) in which CCRS will be developed and tested. The development environment includes both the Dell and Apple workstations in the Software Engineering lab and oraserv, the development server that runs Apache, PHP, and MySQL.

Workstations:

Apple iMac

- Apple OS X Lion 10.7.4
- RAM: 4GB DDR3
- Processor: 2.5 GHZ Intel Core i3

Dell Optiplex 760

- Windows Vista Enterprise SP2
- RAM: 4GB DDR2
- Processor: 2.93GHZ Intel Core2 Duo

Software: Netbeans, Notepad++

Development Server (oraserv):

- x86 64 PC
- Hostname: oraserv.cs.siena.edu
- CentOS 5.2
- Kernel: 2.6.18-92.el5
- Intel Xeon 2.66 GHz CPU
- 8 GB of Memory
- Apache version 2.2.9
- PHP version 5.2.6
- MySQL version 5.0.45

### 8.2 Production Environment

The production environment has not been designated at this time. This environment will match the specifications of the running development environment.

## 9 Deliverables

S.E.E. Solutions has prepared a DVD with the following items for our client Dr. Lederman:

- A copy of our team files from the team directory located on our Oraserv account:
  - Team Website source code
  - Project Source Code
  - Project Images
  - Project Documentation
- A README.txt file explaining the DVD File Hierarchy
- Team Song Lyrics
- Team Song Music
- Audio recording of Team Song

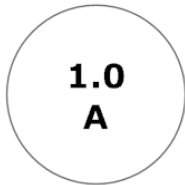
S.E.E. Solutions will also deliver our Acceptance Test documentation, results, and presentation.

## 10 Data Flow Diagrams

The following data flow diagrams illustrate the movement of data within CCRS. These diagrams show how CCRS creates, moves, stores, and transform data within the system. The diagrams are broken into multiple levels; each level demonstrates a more specific implementation of the processes from higher levels. Below is the hierarchy of the levels:

- Context Diagram - Overview of the system and the system's interactions with the users and databases.
- Level 0 - Expansion of the CCRS process seen in the Context Diagram
- Level 1 - Expansion of process found in the Level 0 diagrams
- Level 2 & 3 - Further expansion of detail on processes found in higher levels

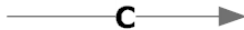
### 10.1 Data Flow Legend



**Process**: Represents a transaction or transformation of the data. Process name and number are shown within circle.



**External Entity**: A source or sink of data in the system. May added data to the system or receive data from the system. External entity name is shown within rectangle.



**Data Flow**: Indicates direction of the flow of data in the system. Arrows are labeled with a description of the data that is being passed along.



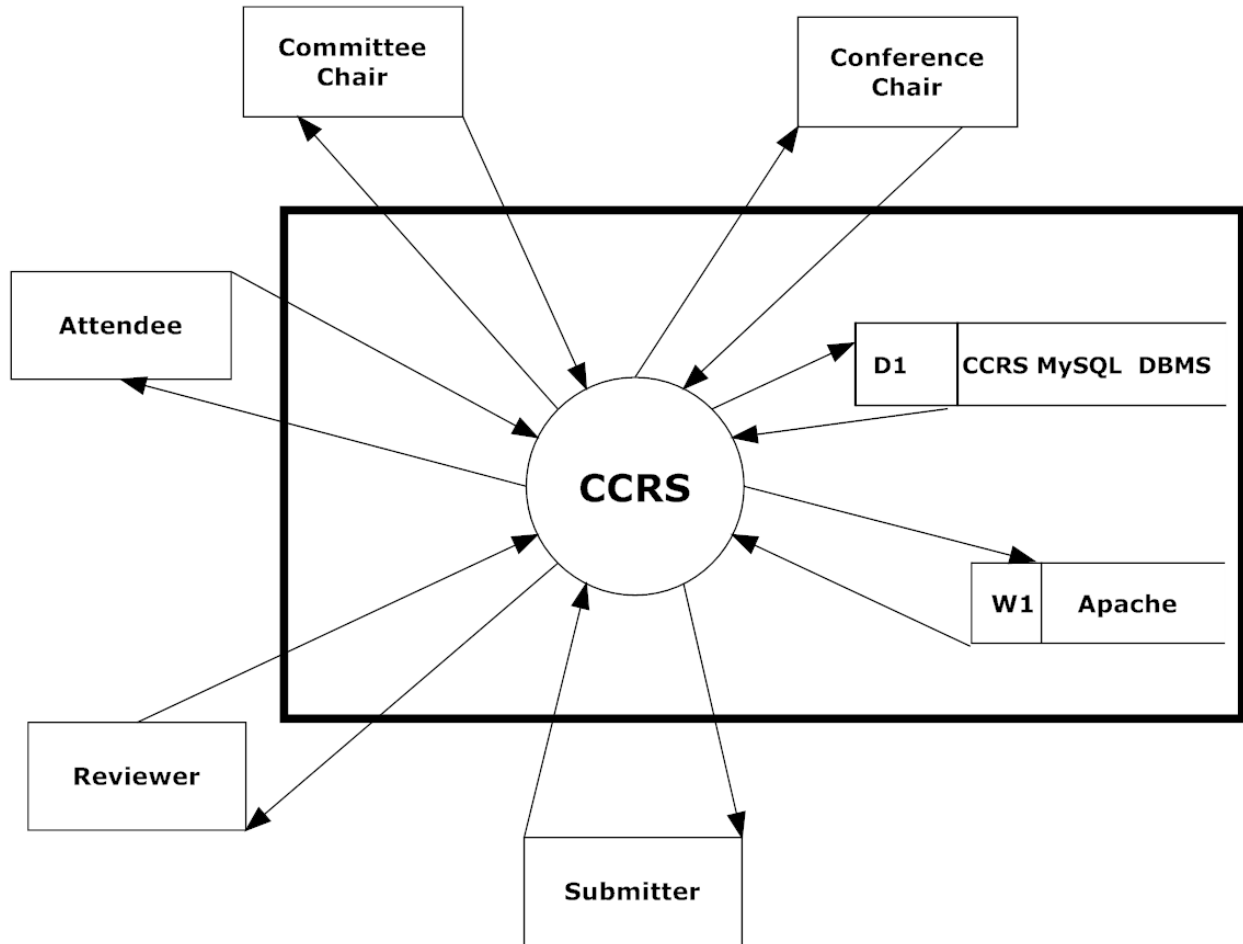
**Data Store**: Represents area where data is stored. T is the type of data stored and E is the data store name. Types of data stores are D - Database and W - Web server.



**System Boundary**: Declares scope of project. Any entity outside of the boundary is outside of CCRS control.

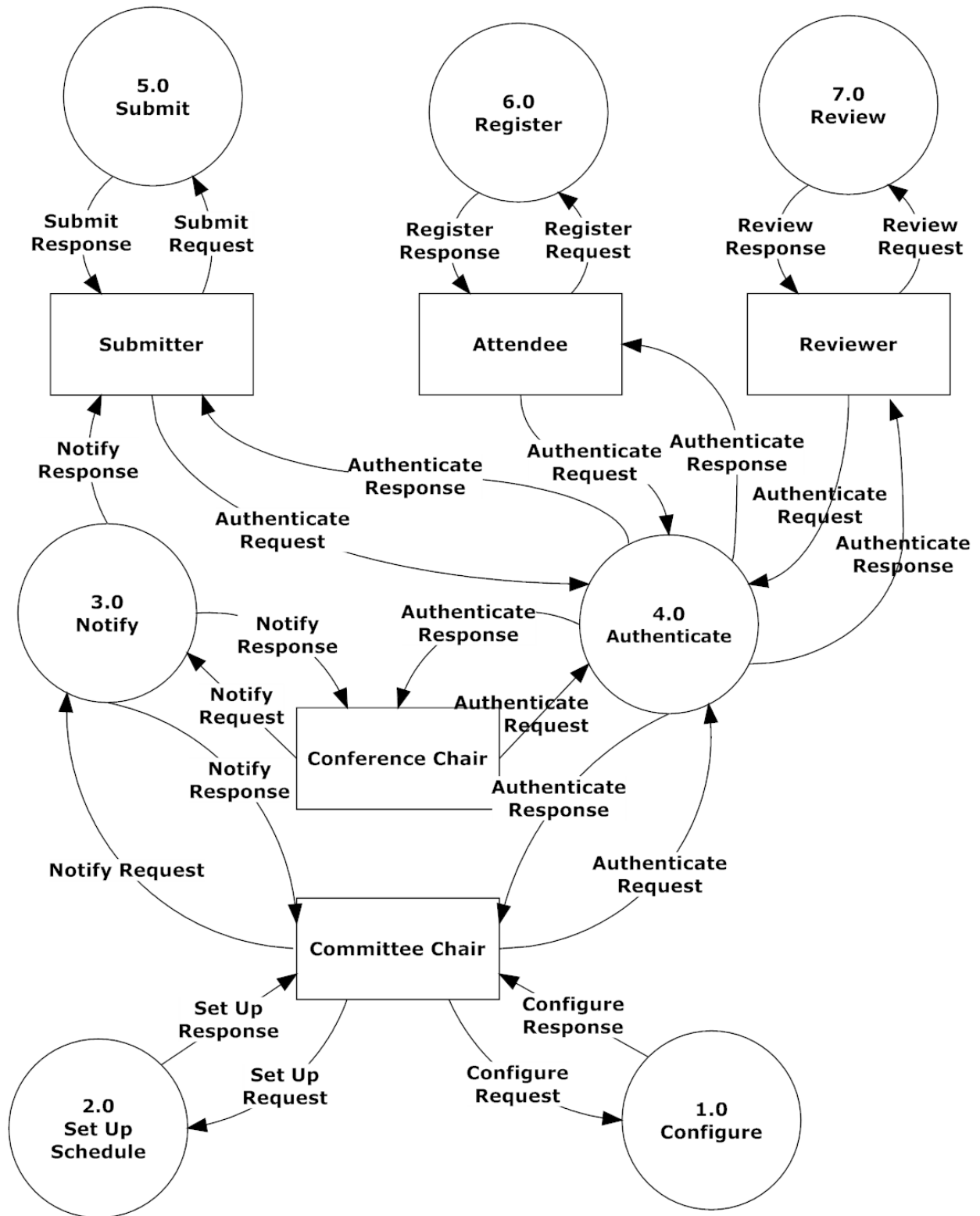


10.2 Context Diagram



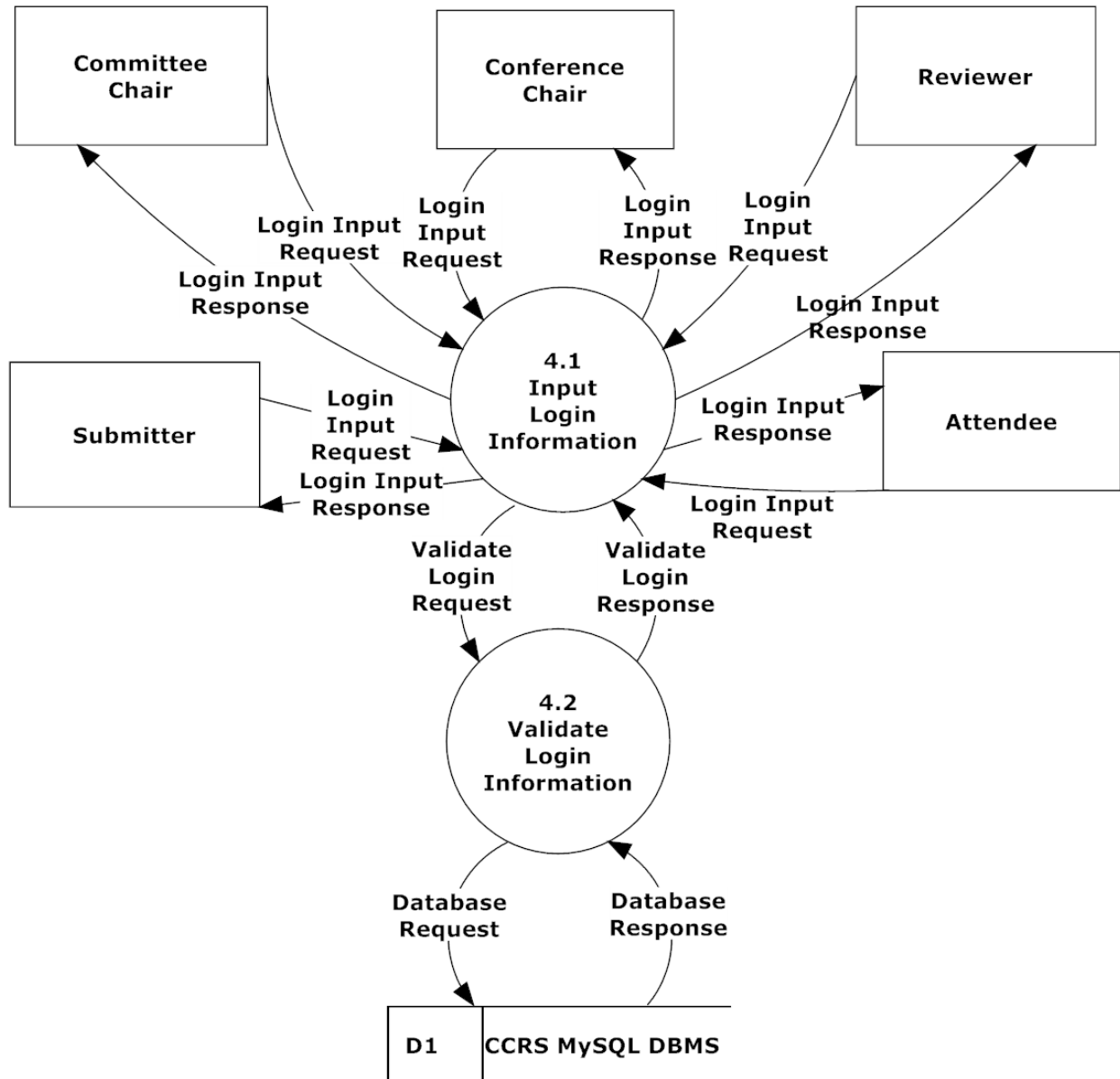
**The system boundary will no longer be included on any of the following diagrams. All entities are considered to be external.**

10.3 Level 0 Diagram

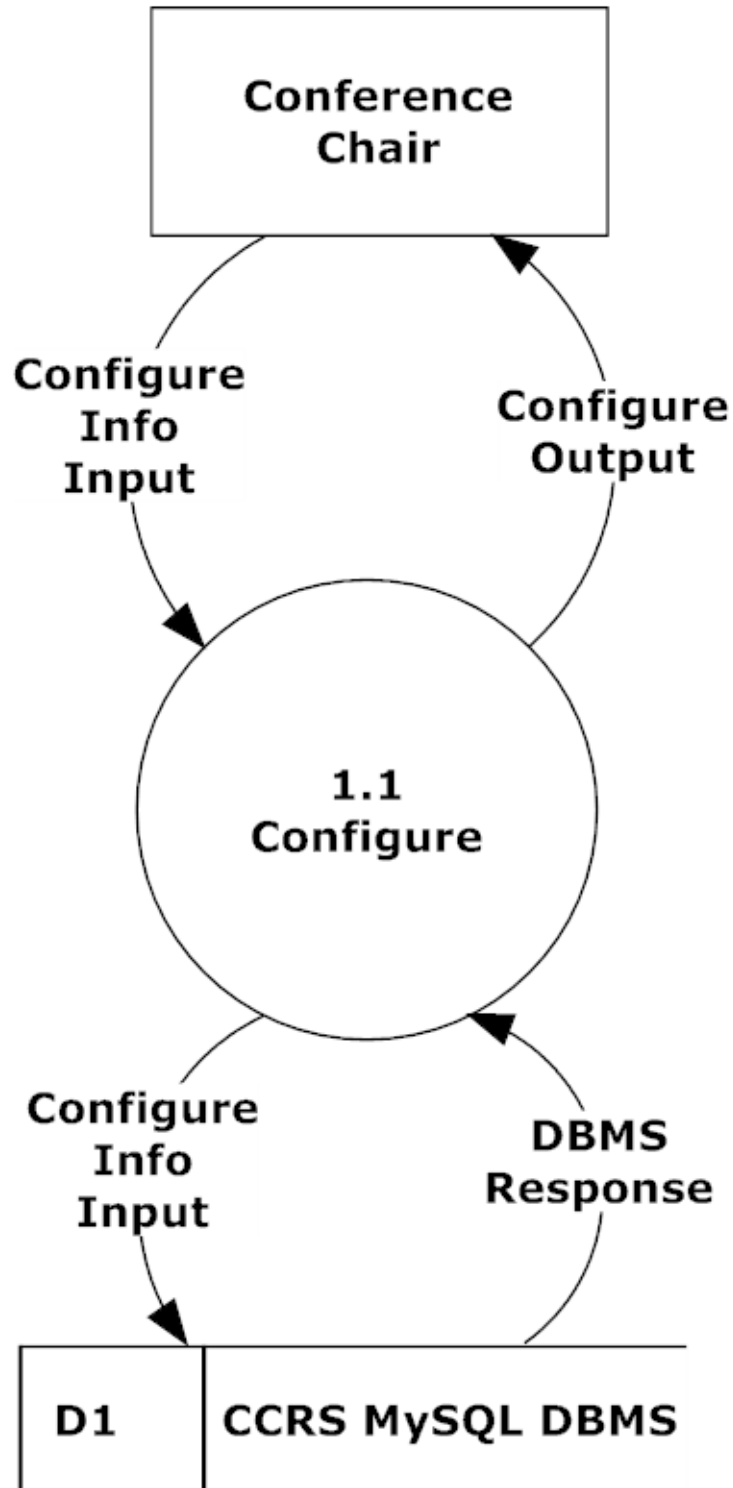


10.4 Level 1 Diagrams

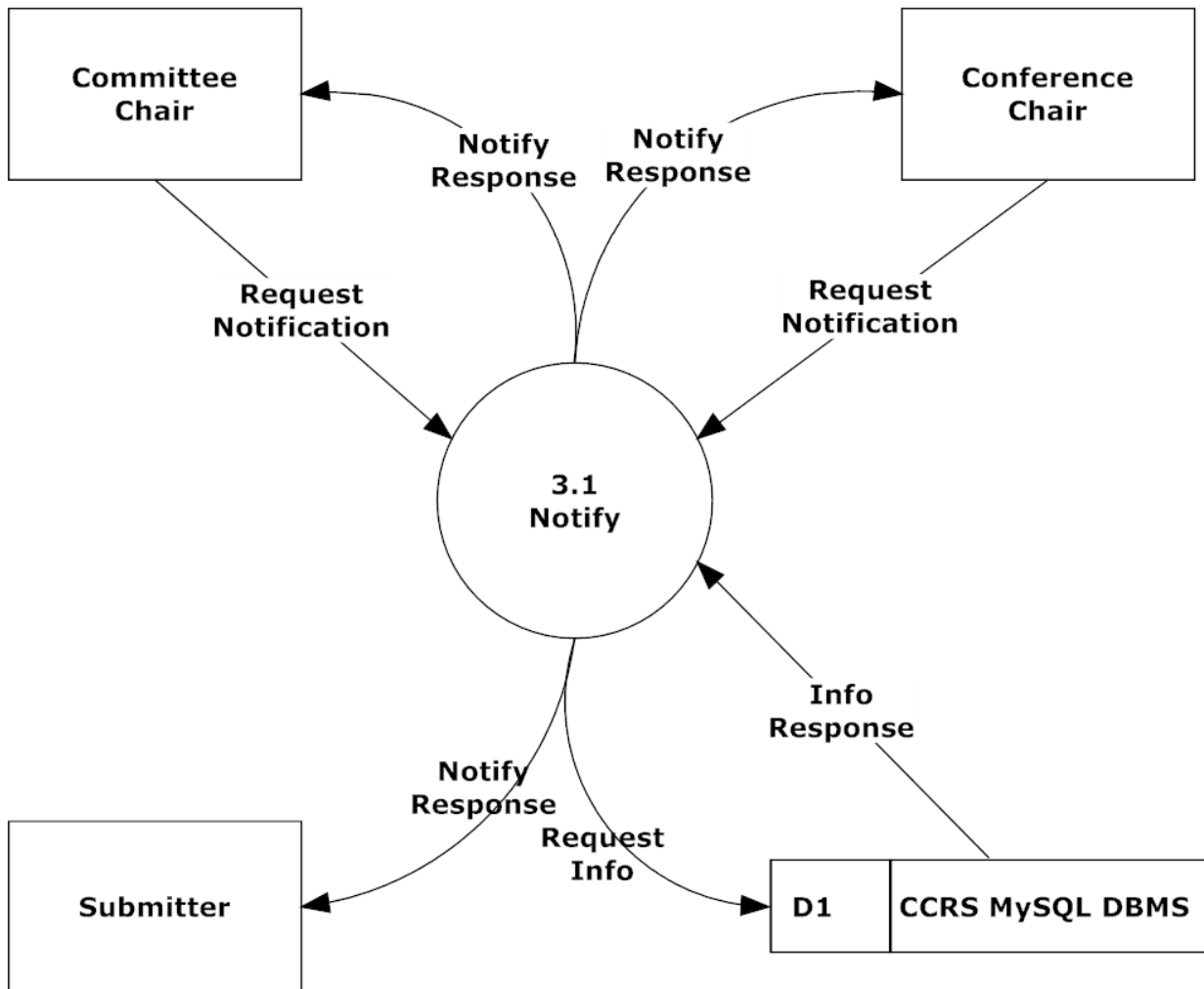
10.4.1 Authenticate Level 1



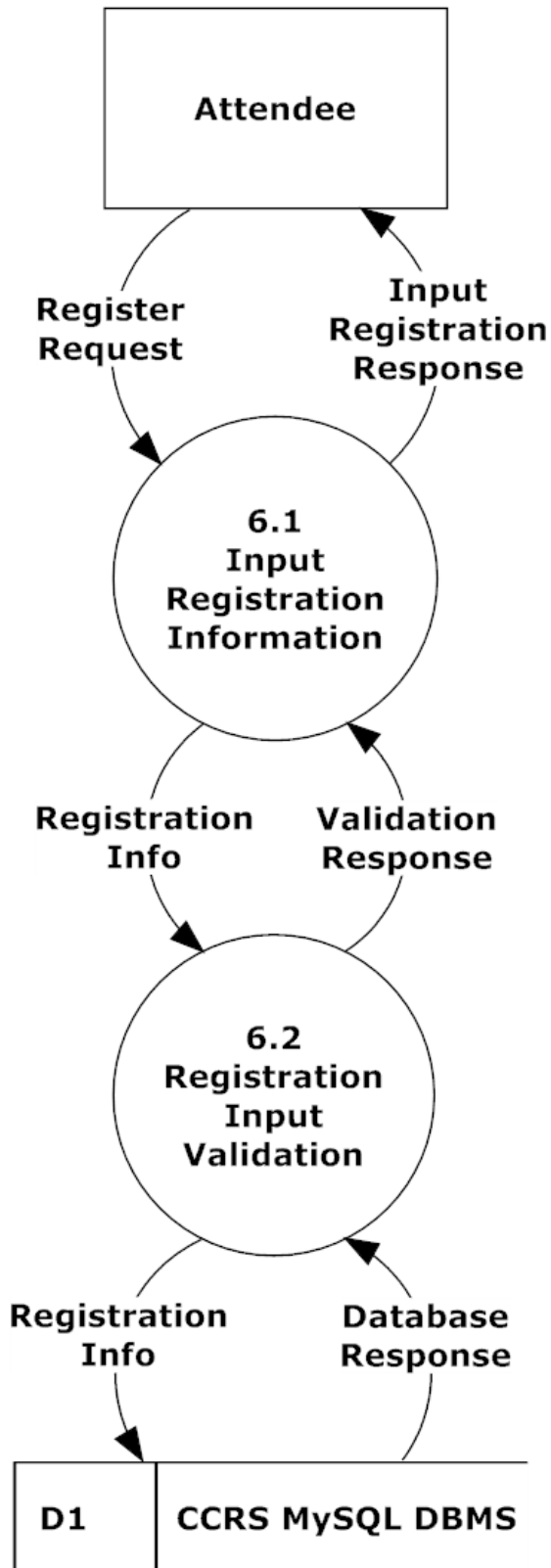
10.4.2 Configure 1.0 Level 1



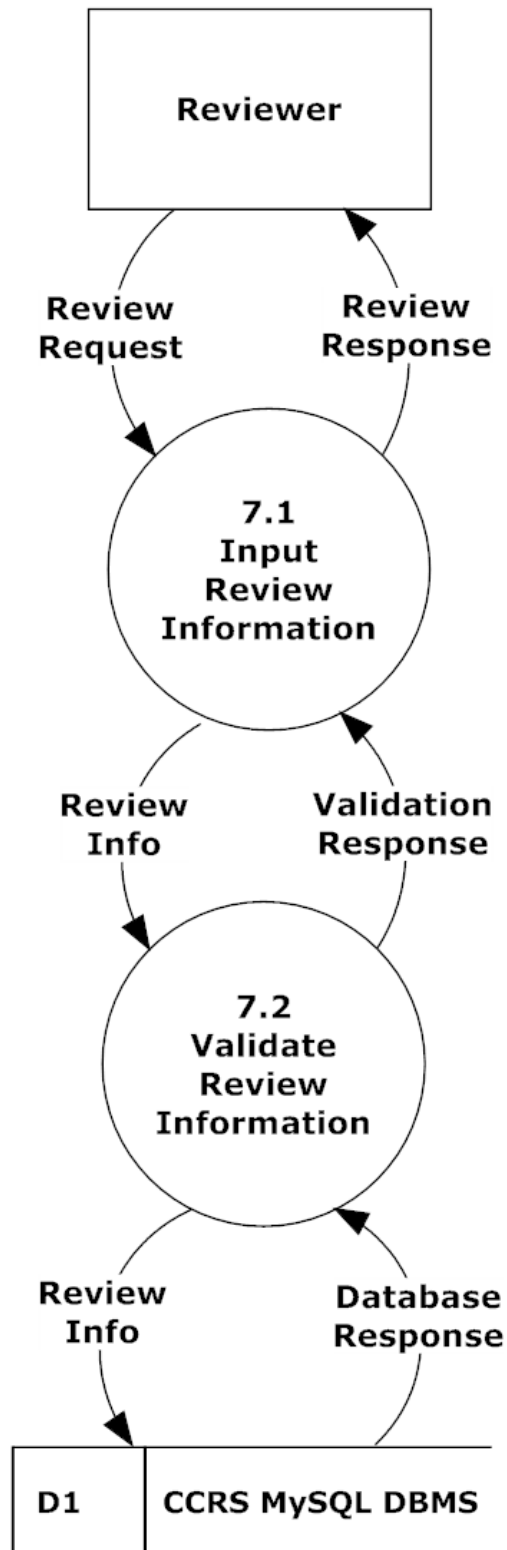
10.4.3 Notify 3.0 Level 1



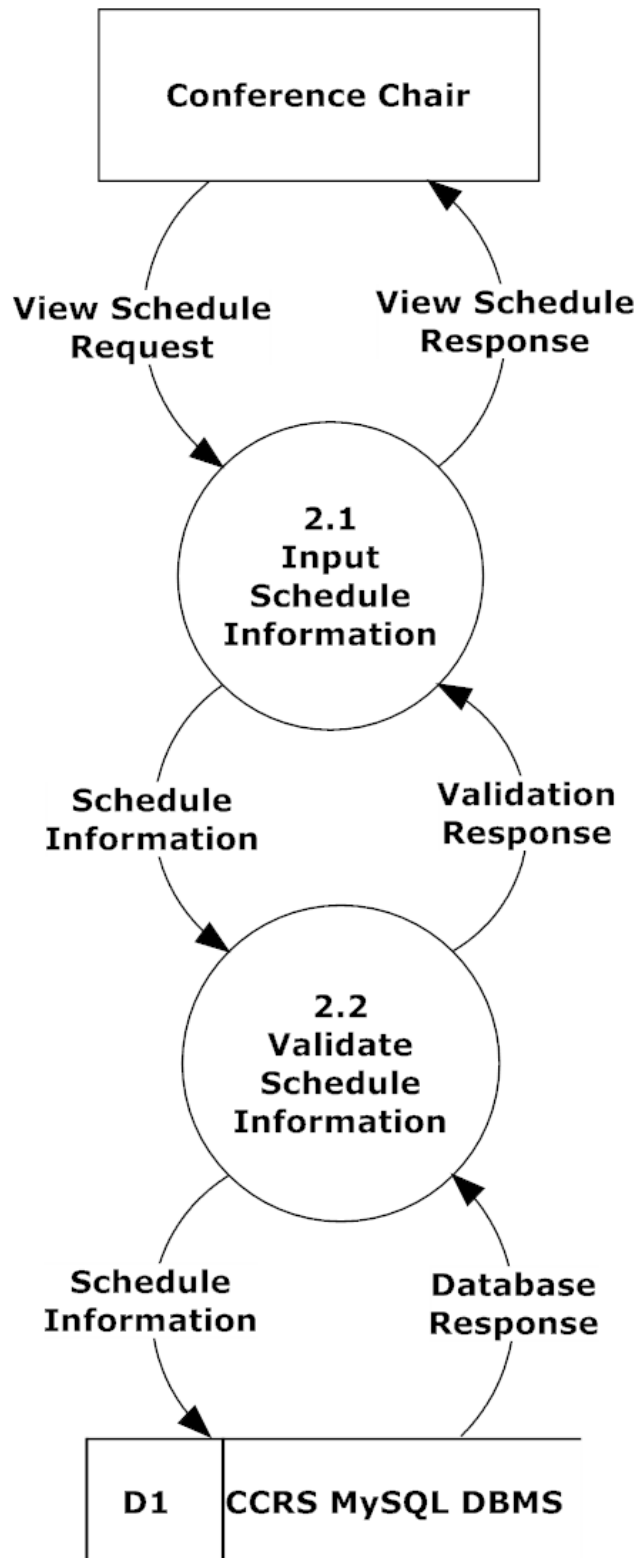
10.4.4 Register 6.0 Level 1



10.4.5 Review 7.0 Level 1

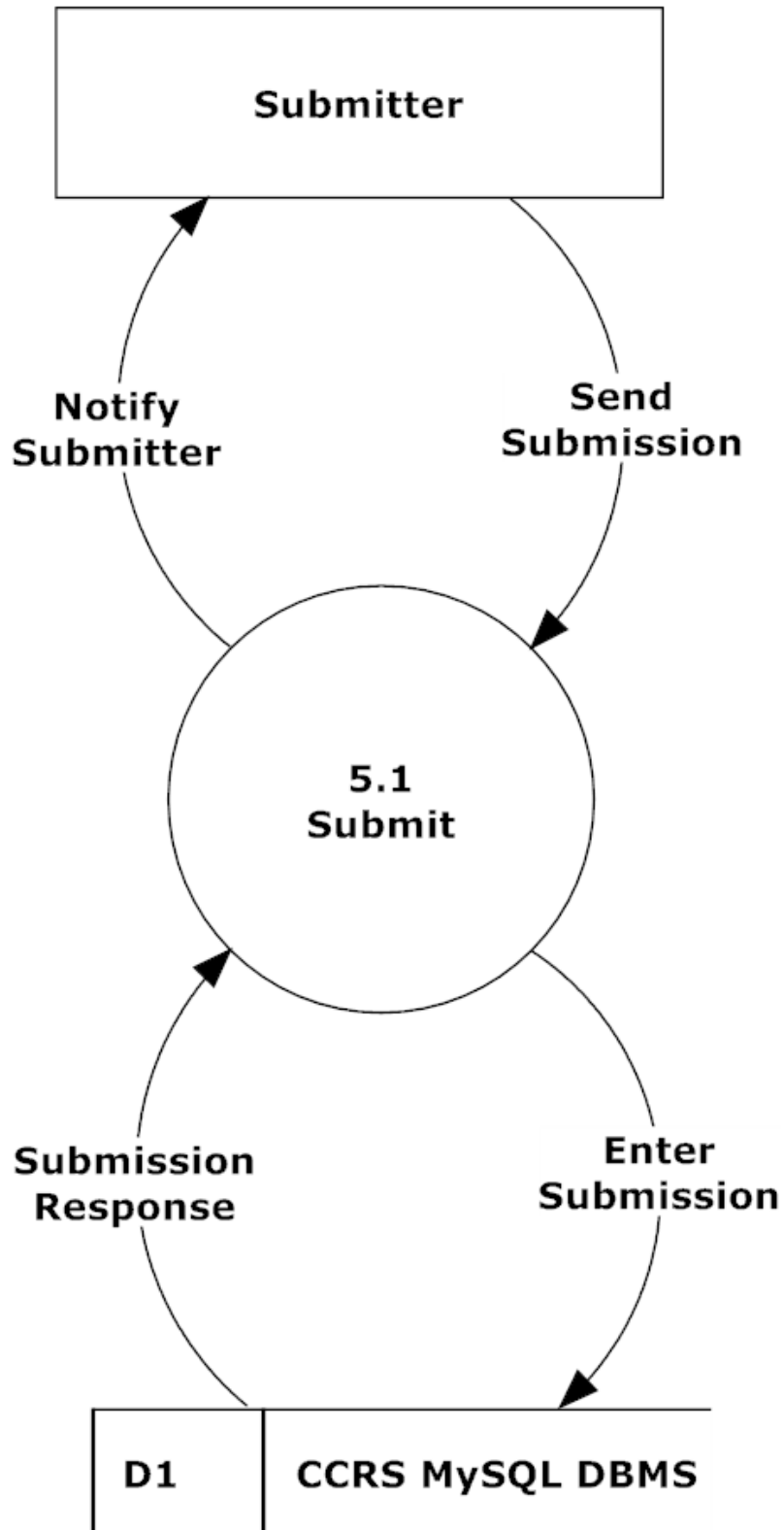


10.4.6 Set Up Schedule 2.0 Level 1



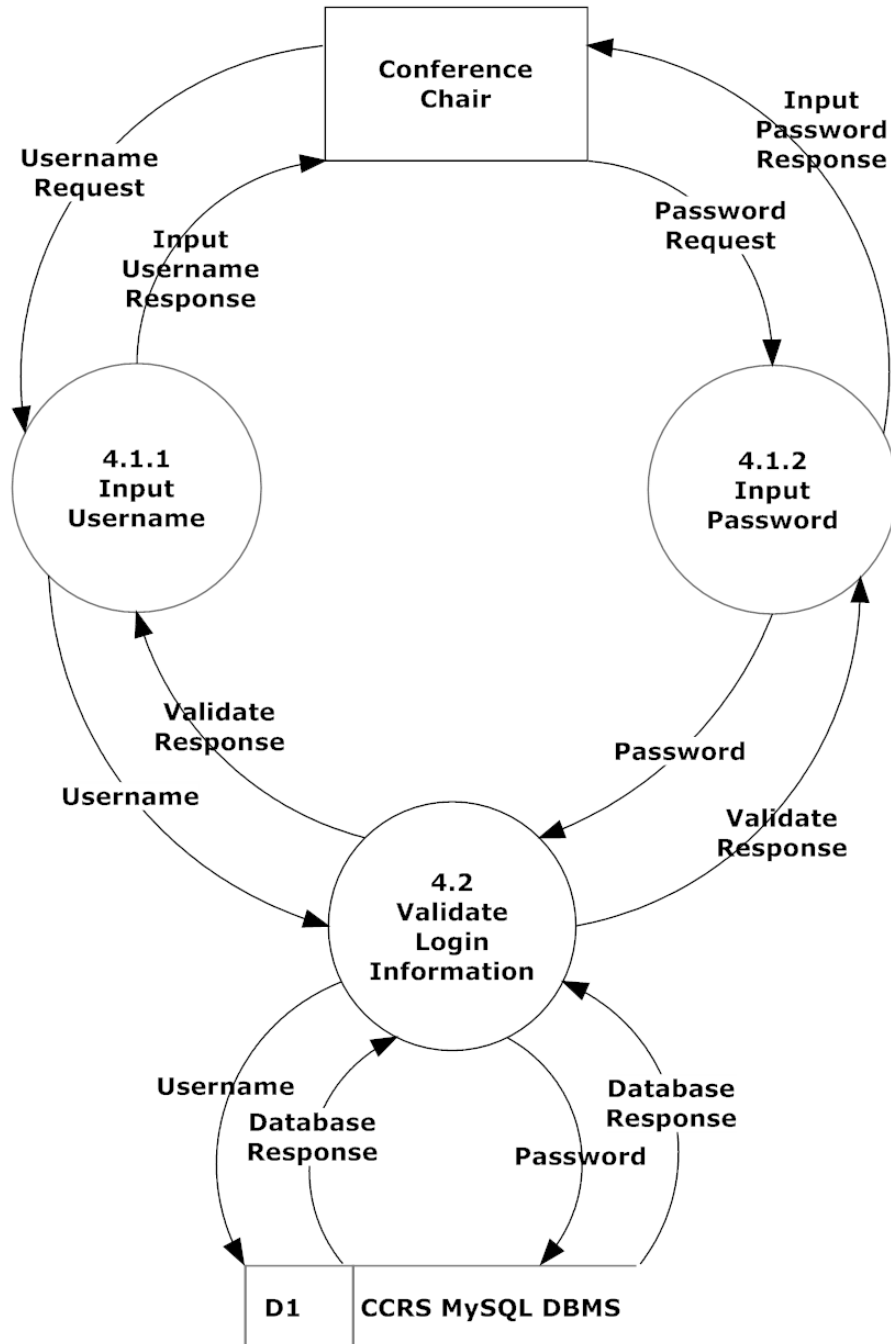


10.4.7 Submit 5.0 Level 1



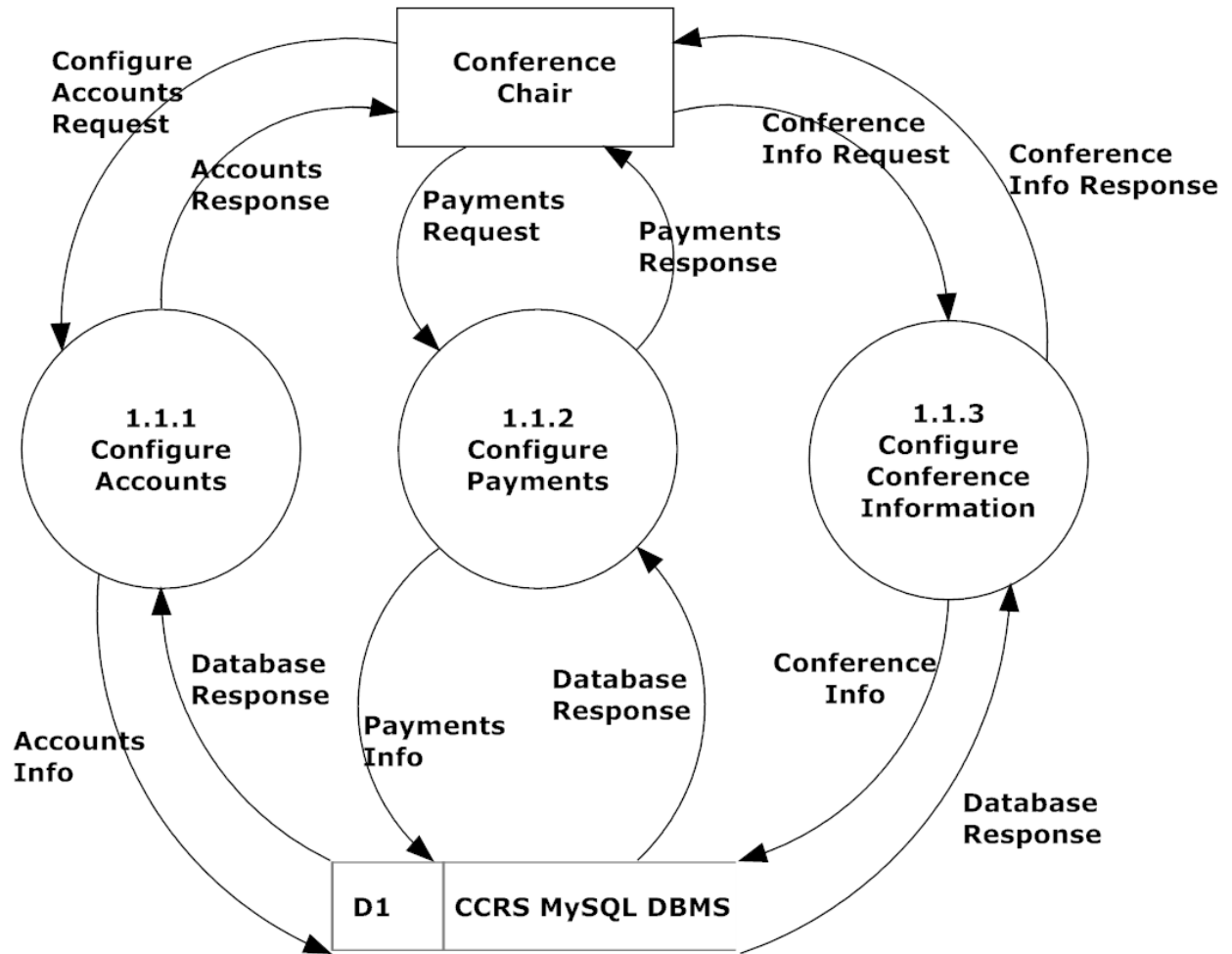
10.5 Level 2 Diagrams

10.5.1 Authenticate 4.1 Level 2

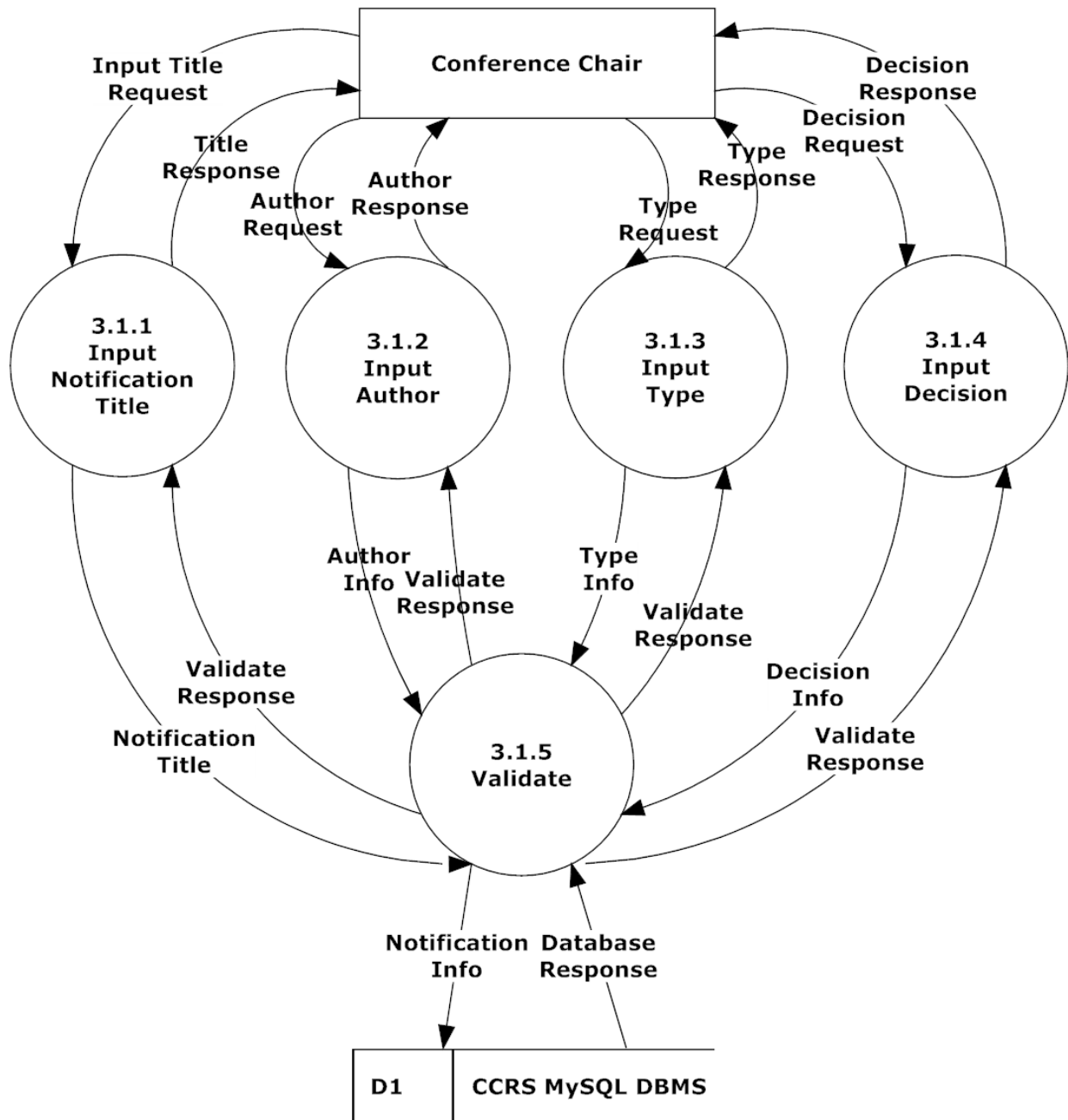


Note: All user will authenticate using this method. Conference Chair is only shown in the diagram for clarity.

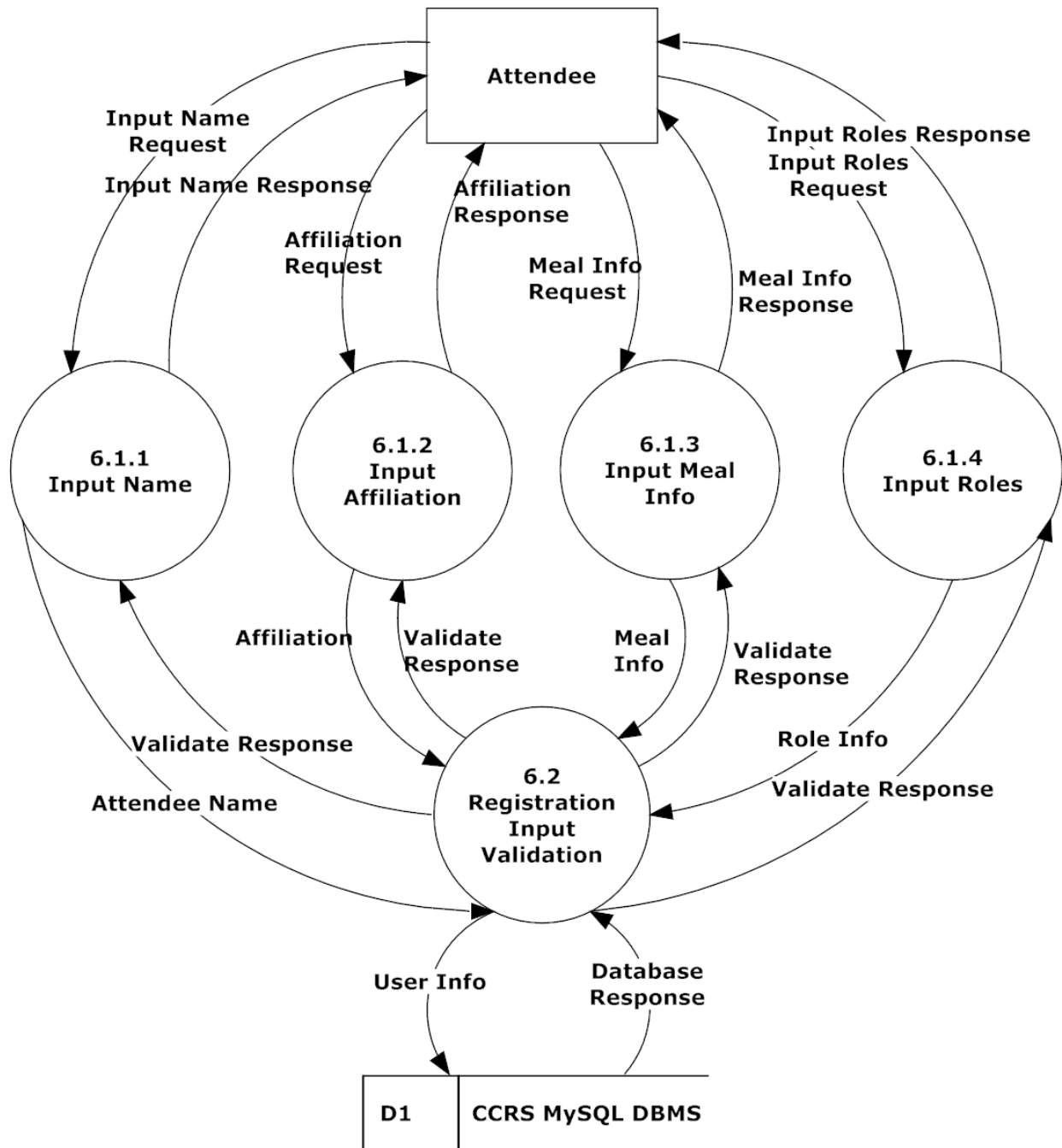
10.5.2 Configure 1.1 Level 2



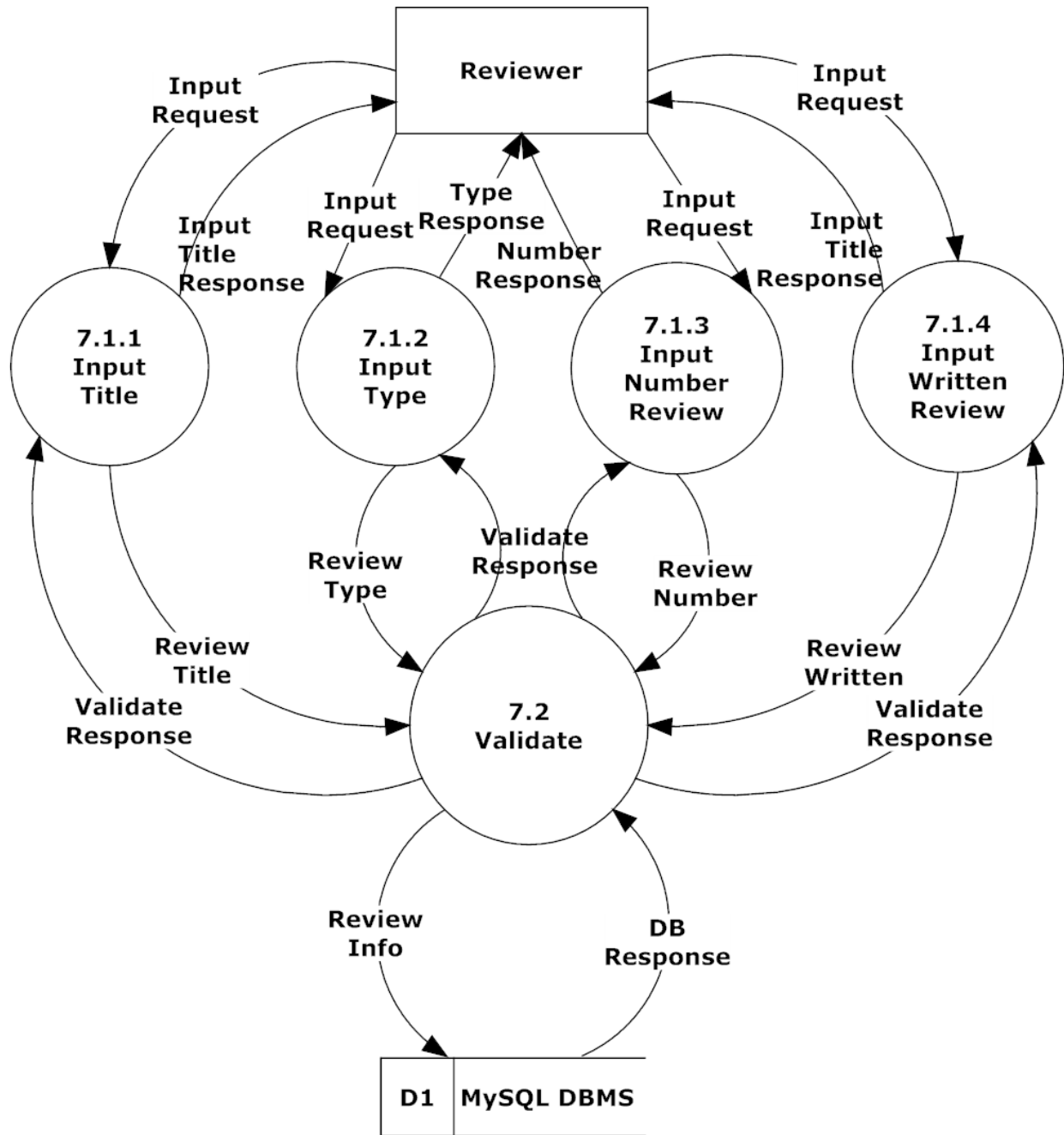
10.5.3 Notify 3.1 Level 2



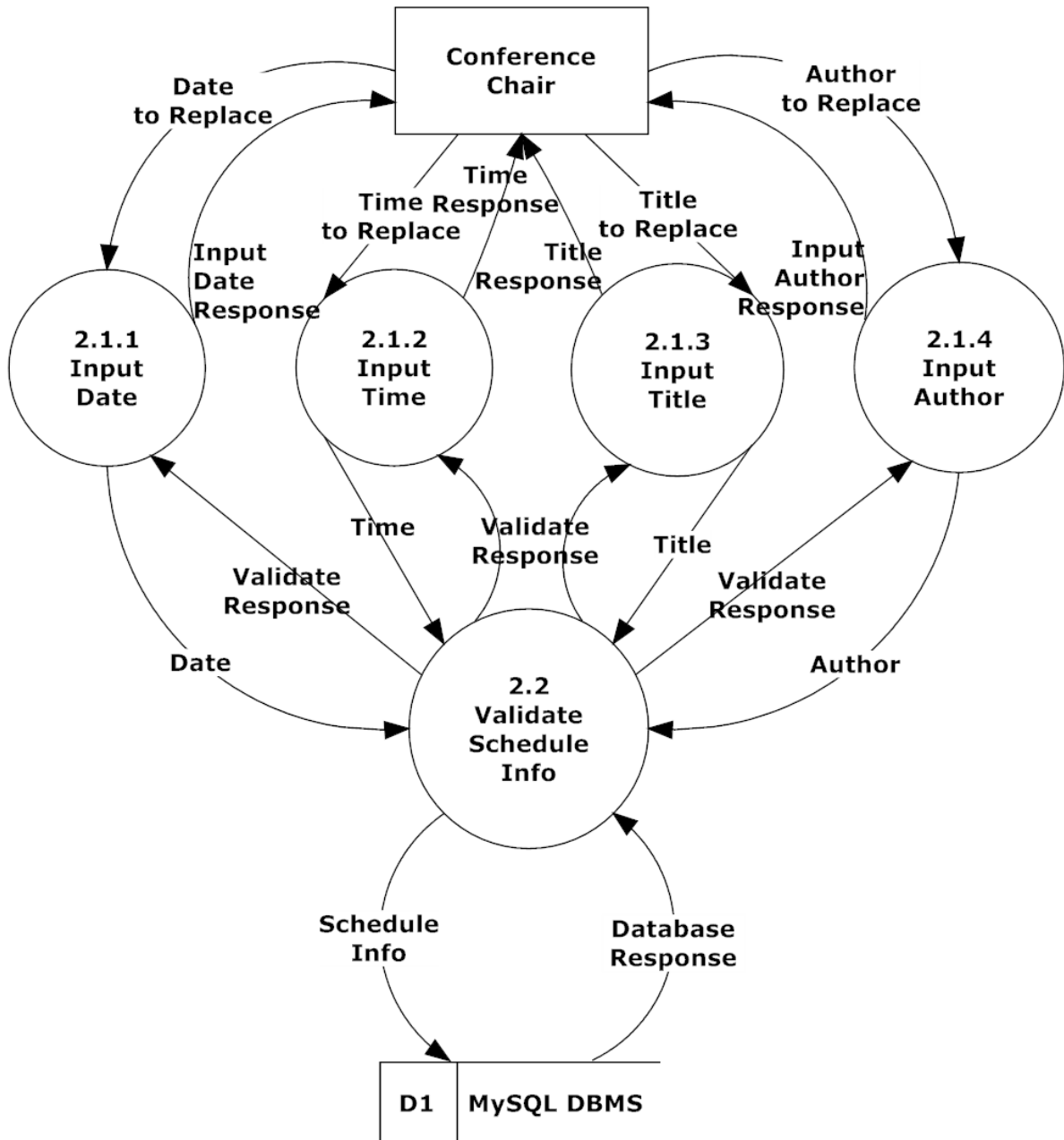
10.5.4 Register 6.1 Level 2



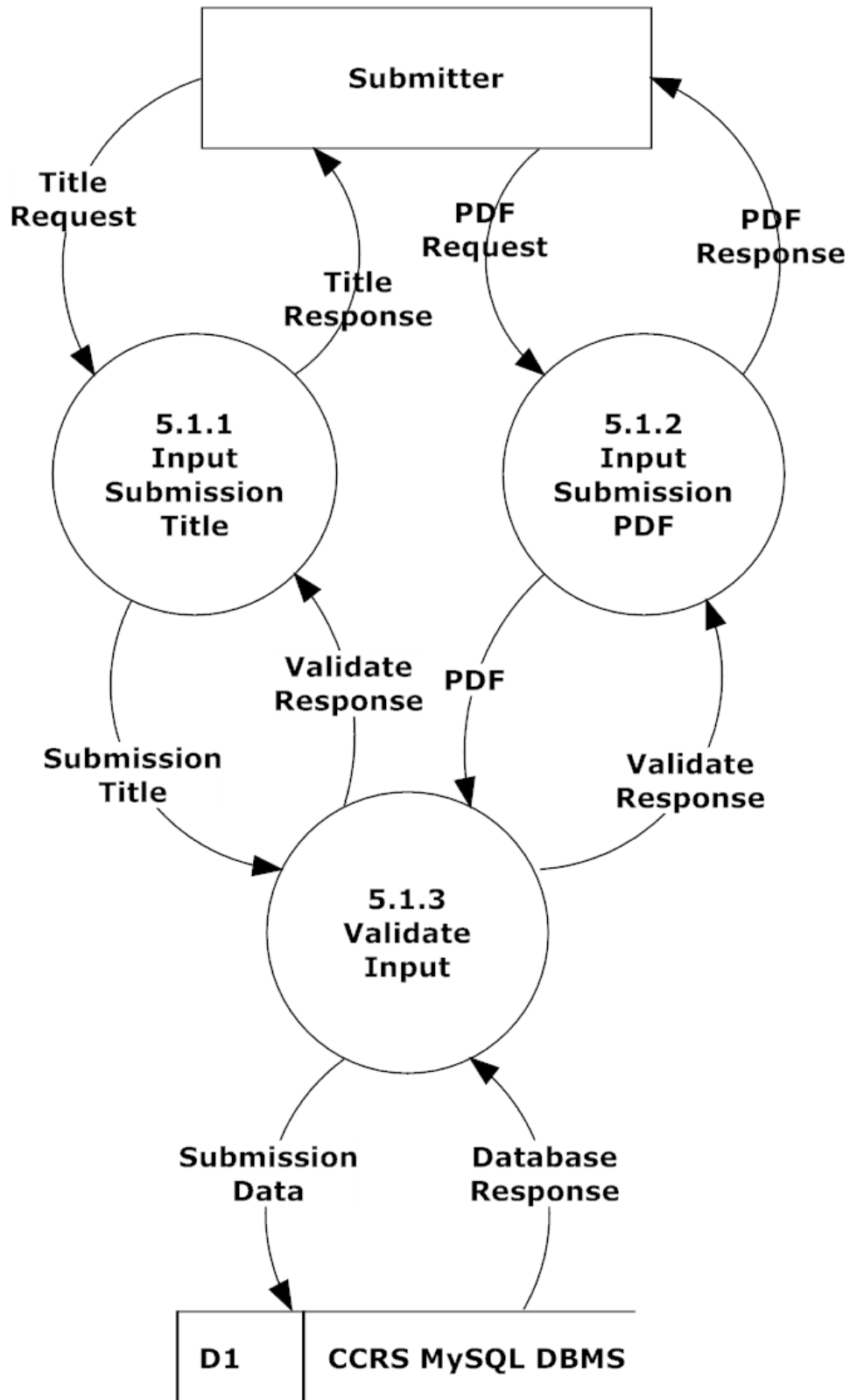
10.5.5 Review 7.1 Level 2



10.5.6 Set Up Schedule 2.1 Level 2



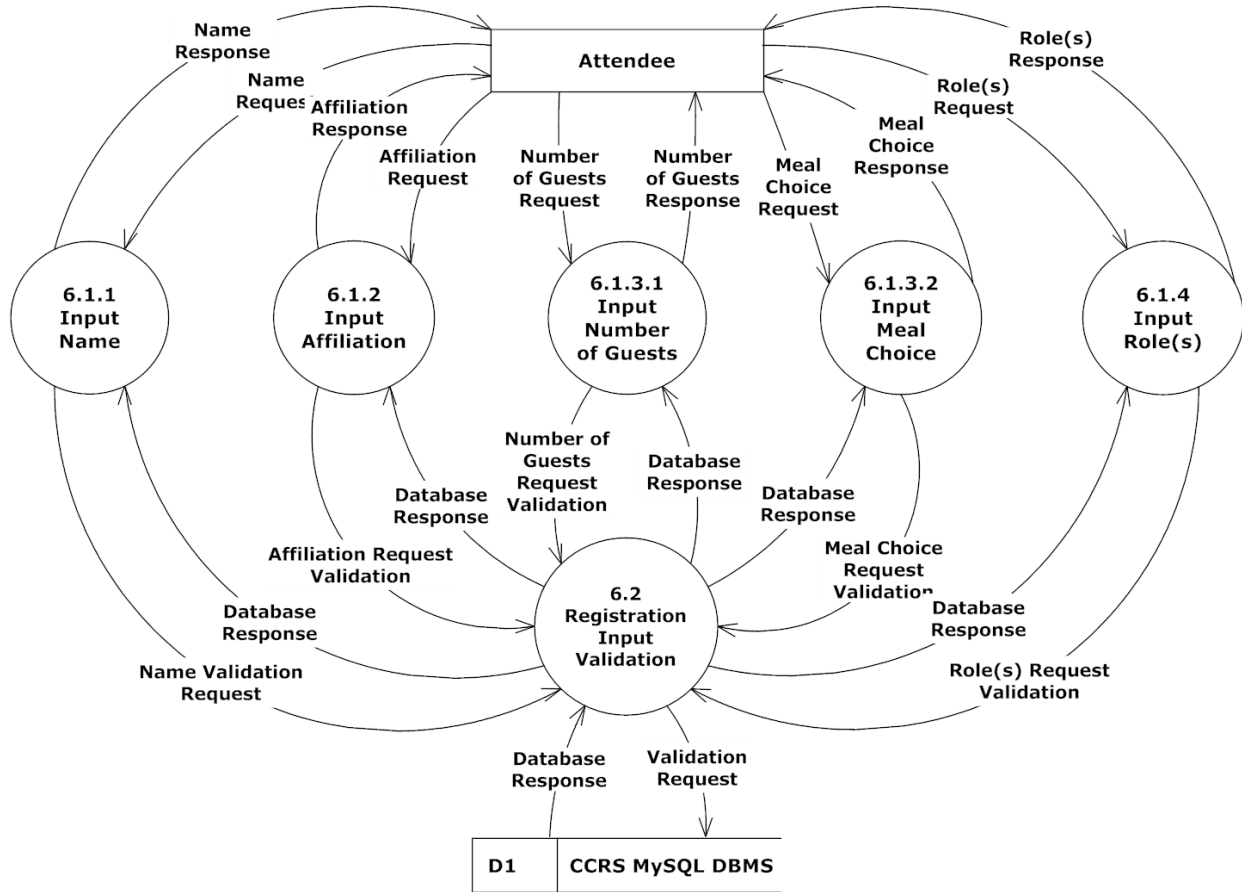
10.5.7 Submit 5.1 Level 2



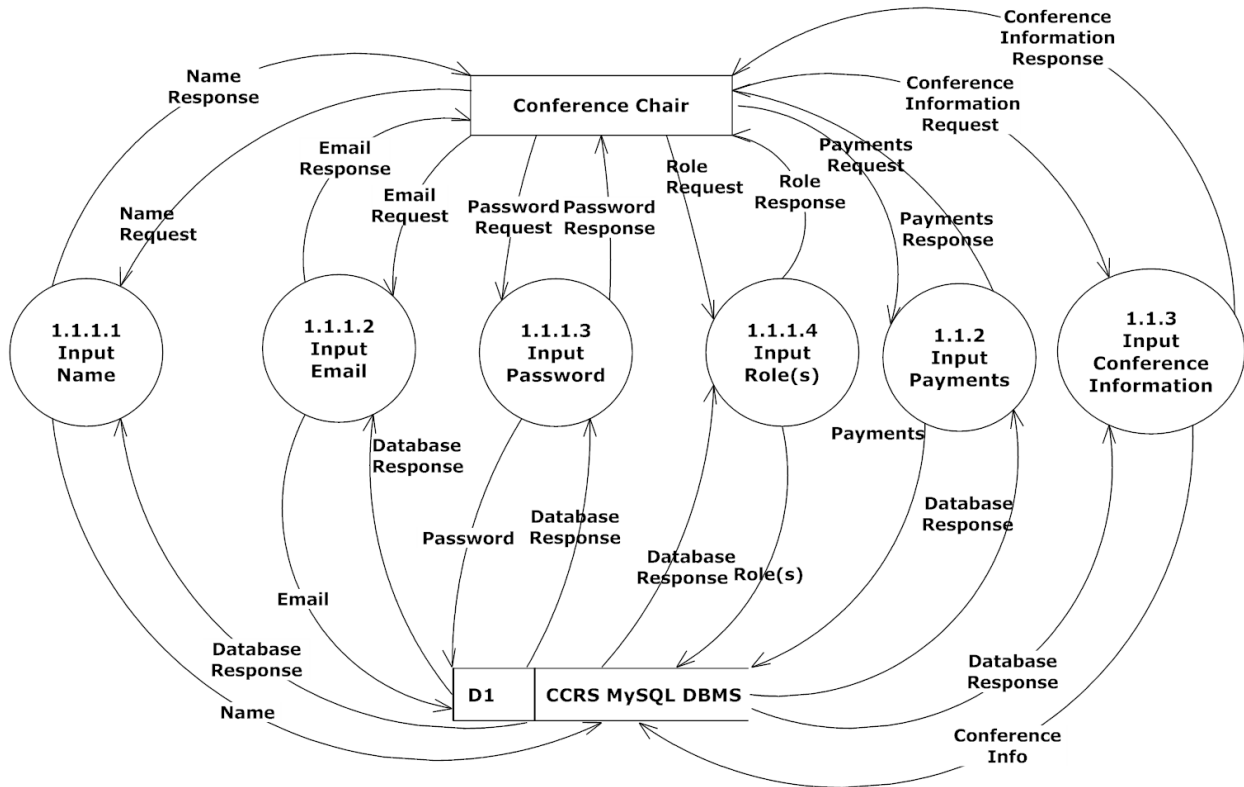


10.6 Level 3 Diagrams

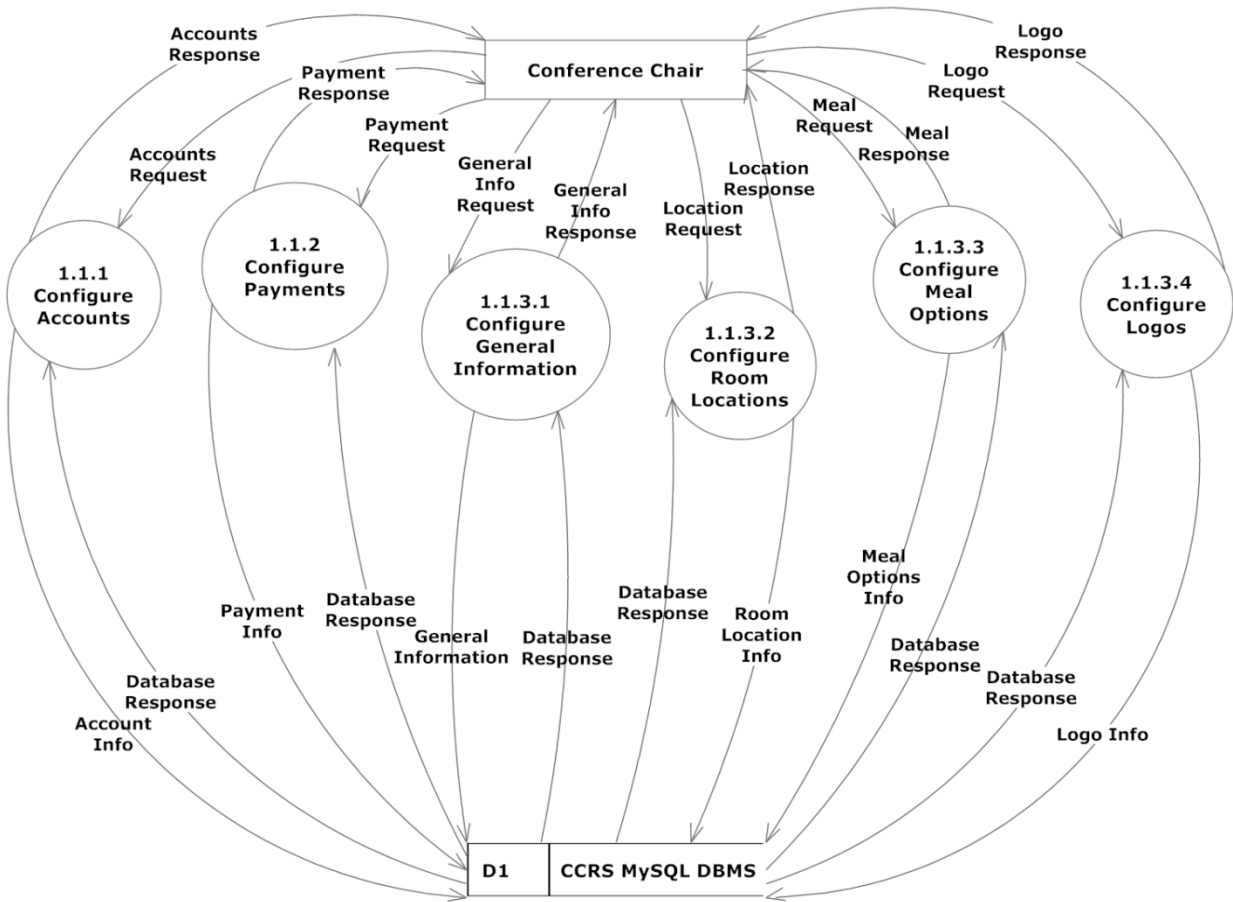
10.6.1 Register Input Meal Info Level 3



10.6.2 Configure Accounts Level 3

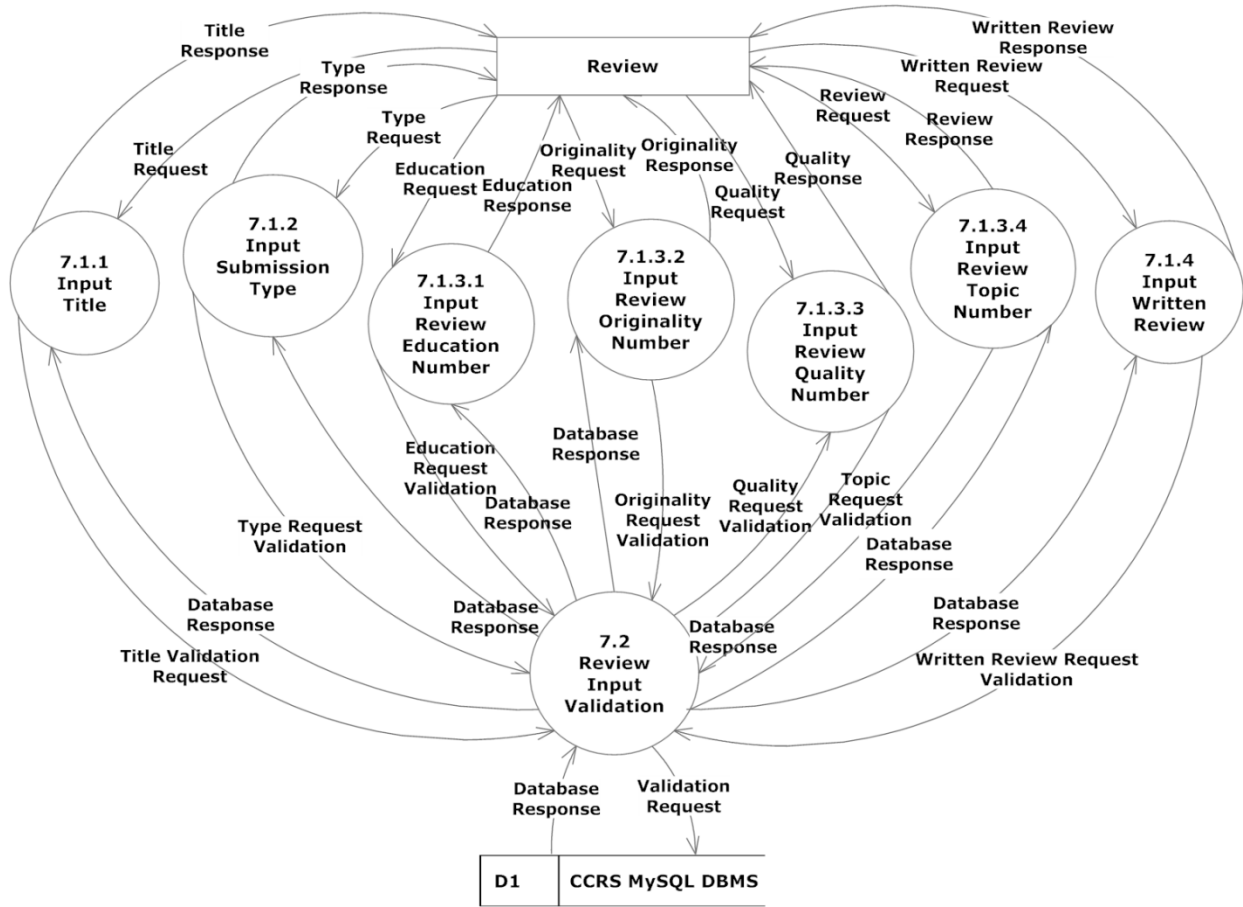


10.6.3 Configure Conference



# CCRS – Data Flow Diagram

## 10.6.4 Review Info Level 3



## **11 Testing Plan**

### **11.1 Overview & Strategy**

CCRS will be tested on all four major browsers, as stated in the functional requirements. The testing is not limited to these browsers and CCRS will be tested on more browsers if time allows. S.E.E. Solutions will test all the functional requirements of CCRS. The functional requirements will be broken into modules and each module will be tested separately. Once the module is determined to work completely, the module will be tested with other necessary modules. Once this testing is complete, all the modules of CCRS will be tested together as a system. The Detailed Design document will describe the testing plan in more detail.

S.E.E. Solutions will also test the non-functional requirements of the CCRS. CCRS will be tested for user-friendliness by subjecting new users to the system to various aspects of the program and have the users perform tasks within the system. CCRS will be tested for stability by running the system with many concurrent users.

### **11.2 Acceptance Test – Acceptance Criteria**

The acceptance test is concerned with confirming that the functional and non-functional requirements of a system have been met. Utilizing this testing process will validate the acceptability of a system. Once a system is declared complete, the test plan document and the unit tests are helpful tools to explain to those who were never involved in the project why and how the project is validated. The document validates the integrity of the steps a team took to show that the system meets the requirements and specifications.

#### **11.2.1 Functional Requirements Inventory**

Functional requirements can be tested and classified as met or unmet after the test. Each requirement in functional requirements inventory will be tested to make sure all the requirements of CCRS are met. Each requirement will be listed below in different sections, the requirements for CCRS, the requirements that are the same for all users, and the requirements that are different for users

## CCRS – Acceptance Test Criteria

### 11.2.1.1 System Requirements

Met	<b>Unmet</b>	System will automatically generate a schedule
<b>Met</b>	Unmet	Schedule will have drag and drop capabilities
<b>Met</b>	Unmet	System will assign reviewers submissions
<b>Met</b>	Unmet	Pages will load using Ajax
<b>Met</b>	Unmet	System will change Submitter to Presenter if and when the Submitter has been accepted
Met	<b>Unmet</b>	System will automatically e-mail users when accepted for certain roles

### 11.2.1.2 All Users

<b>Met</b>	Unmet	Able to log into CCRS with a provided username and password. An incorrect username and/or password will result in an appropriate error message
<b>Met</b>	Unmet	All users will be able to change their account settings such as password and number of guests

### 11.2.1.3 Conference Chair

Met	<b>Unmet</b>	Able to configure user accounts for other users
Met	<b>Unmet</b>	Accounts will be inserted into appropriate database tables
Met	<b>Unmet</b>	Able to configure payment for users
Met	<b>Unmet</b>	Proper fields will be updated in database tables
<b>Met</b>	Unmet	Will be able to configure or edit schedule for event
<b>Met</b>	Unmet	Will be able to configure meals options for the conference
Met	<b>Unmet</b>	Will be able to notify applicants if they have been accepted as a reviewer and a vendor

### 11.2.1.4 Committee Chair

Met	<b>Unmet</b>	Will be able to notify appropriate users based on membership in committee.
-----	--------------	--

## CCRS – Acceptance Test Criteria

### 11.2.1.5 Registration Chair

<b>Met</b>	<b>Unmet</b>	Able to notify appropriate users for required payment.
------------	--------------	--

### 11.2.1.6 Review Chair

<b>Met</b>	<b>Unmet</b>	Able to notify appropriate reviewers if other reviews are needed.
------------	--------------	---

### 11.2.1.7 Attendee

<b>Met</b>	<b>Unmet</b>	Able to register for conference including personal information, meal selection, and payment
<b>Met</b>	<b>Unmet</b>	All required fields will be checked for proper input for nulls and format and error message produced for any issues
<b>Met</b>	<b>Unmet</b>	Accounts and appropriate information will be inserted to appropriate database tables

### 11.2.1.8 Vendor

<b>Met</b>	<b>Unmet</b>	Able to register for conference including personal information, meal selection, and payment
<b>Met</b>	<b>Unmet</b>	All required fields will be checked for proper input for nulls and format
<b>Met</b>	<b>Unmet</b>	Accounts and appropriate information will be inserted to appropriate database tables
<b>Met</b>	<b>Unmet</b>	Able to check the place where they will be set up
<b>Met</b>	<b>Unmet</b>	Request Audio/Visual equipment they will need

### 11.2.1.9 Presenter

<b>Met</b>	<b>Unmet</b>	Able to register for conference including personal information, meal selection, and payment
<b>Met</b>	<b>Unmet</b>	All required fields will be checked for proper input for nulls and format
<b>Met</b>	<b>Unmet</b>	Accounts and appropriate information will be inserted to appropriate database
<b>Met</b>	<b>Unmet</b>	Able to check the place where they will be presenting

## CCRS – Acceptance Test Criteria

### 11.2.1.10 Programming Contest Participant

<b>Met</b>	Unmet	Able to register for conference including personal information, meal selection, and payment
<b>Met</b>	Unmet	All required fields will be checked for proper input for nulls and format
<b>Met</b>	Unmet	Accounts and appropriate information will be inserted to appropriate database tables

### 11.2.1.11 Faculty Advisor

<b>Met</b>	Unmet	Able to register for conference including personal information, meal selection, and payment
<b>Met</b>	Unmet	All required fields will be checked for proper input for nulls and format
<b>Met</b>	Unmet	Accounts and appropriate information will be inserted to appropriate database tables

### 11.2.1.12 Reviewer

<b>Met</b>	Unmet	Able to review appropriate material (panel, poster, tutorial, demo, workshop, paper submissions)
<b>Met</b>	Unmet	Reviewed comments and results will be added to appropriate database tables and/or location on web server
<b>Met</b>	Unmet	Cannot review submissions if affiliated with the school in the submission

### 11.2.1.13 Submitter

<b>Met</b>	Unmet	Able to submit appropriate material (panel, poster, tutorial, demo, workshop, paper submissions)
------------	-------	--

### 11.2.2 Nonfunctional Requirements Inventory

Nonfunctional requirements are not easily testable and cannot easily be determined if each has been met or unmet. The following is a list of the nonfunctional requirements for CCRS

- The system will be easily maintained.
- The system will be stable.
- The system will be viewable on multiple browsers.
- The system will run efficiently.
- The system will be user friendly.



**11.3 Unit Tests**

All units will be tested separately. Once each unit passes all the tests required, S.E.E. Solutions will run a full system test to make sure all the units work correctly together. Please see Appendix D for the unit tests for all unit tests. The Excel file is also available on the S.E.E. Solutions website.

## **Appendix**

**Appendix A - Glossary of Terms**

**Appendix B - Project Timeline (Gantt Chart)**

**Appendix C – Data Dictionary**

**Appendix D – Test Requirements & Results**

## **Appendix A – Glossary of Terms**

Actors - An entity in UML Use Case Diagrams describing human and nonhuman users that interact with the system

AJAX - (Asynchronous JavaScript and XML) - A free group of interrelated web development methods used for creating efficient and interactive Web applications

CCRS (Comprehensive Conference Registration System) - The name of the project S.E.E. Solutions is creating

CCSCNE (Consortium for Computing Sciences in Colleges – Northeastern Region) - The name of the conference CCRS is being made for

Gantt Chart - A chart that illustrates a project schedule by showing the start dates and end dates of the specific elements of a project

HTTP (Hypertext Transfer Protocol) - A protocol used to transfer hypertext requests and information between servers and browsers

NetBeans - An integrated development environment used primarily with Java, S.E.E. Solutions will be using NetBeans for developing PHP code

Notepad++ - A tool developed to support scripting of many languages including web development

ODBC (Open Database Connectivity) - A standard API used for connecting to database

PHP (PHP Hypertext Preprocessor) - A server side scripting language used for web development

Prototype - A mock up design for the final project

SCP (Secure Copy) - A network protocol used for secure data communication

UML (Unified Modeling Language) - A standardized modeling language used in software engineering

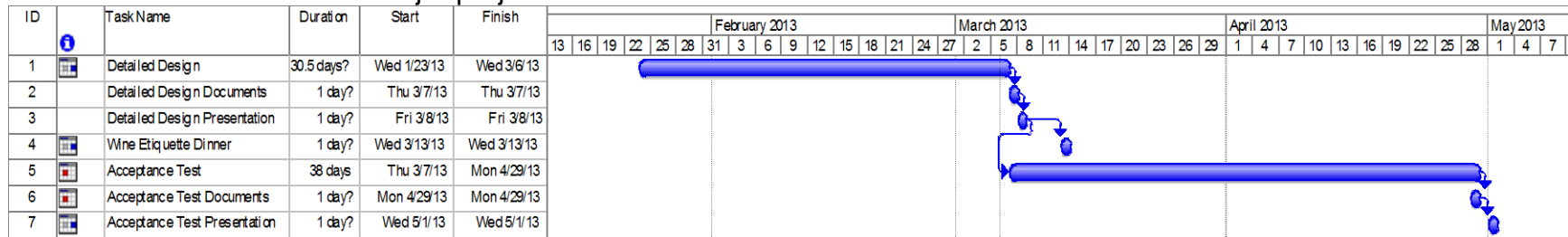
Unit Testing - A method of testing in which the system is broken down into units and each unit is tested separately

Use Case - An entity in UML Use Case Diagram that describes the functions of the systems that users can interact with

## CCRS – Appendix B– Gantt Chart

### Appendix B –Gantt Chart

A Gantt chart is a timeline of major project milestones.



**Appendix C – Data Dictionary**

The data dictionary is a repository that shows information about the data within CCRS, including format, usage, and examples of correct and incorrect input.

**Appendix D – Test Results**

The following are the test results for CCRS. The description of the testing Plan and requirements were seen above in section 11 and the subsections.