

Project **R**ecording **I**nformation **S**ystem **M**anagement
Requirements Specification by Quantum Technologies



Welcome

- Our Client:
 - **Dr. Meg Fryling**
 - **Asst. Professor of Computer Science**
- Guests
 - **Dr. Timoth Lederman**
 - **Dr. Darren Lim**

Agenda

- **Introduction**
- Project Progression
- Product Overview
- User Case Narratives
- User Permission Chart
- UML Use Case Diagram
- Data Flow Diagrams
- Requirements Inventory
- Non-Functional Requirements
- Prototypes
- What's Next

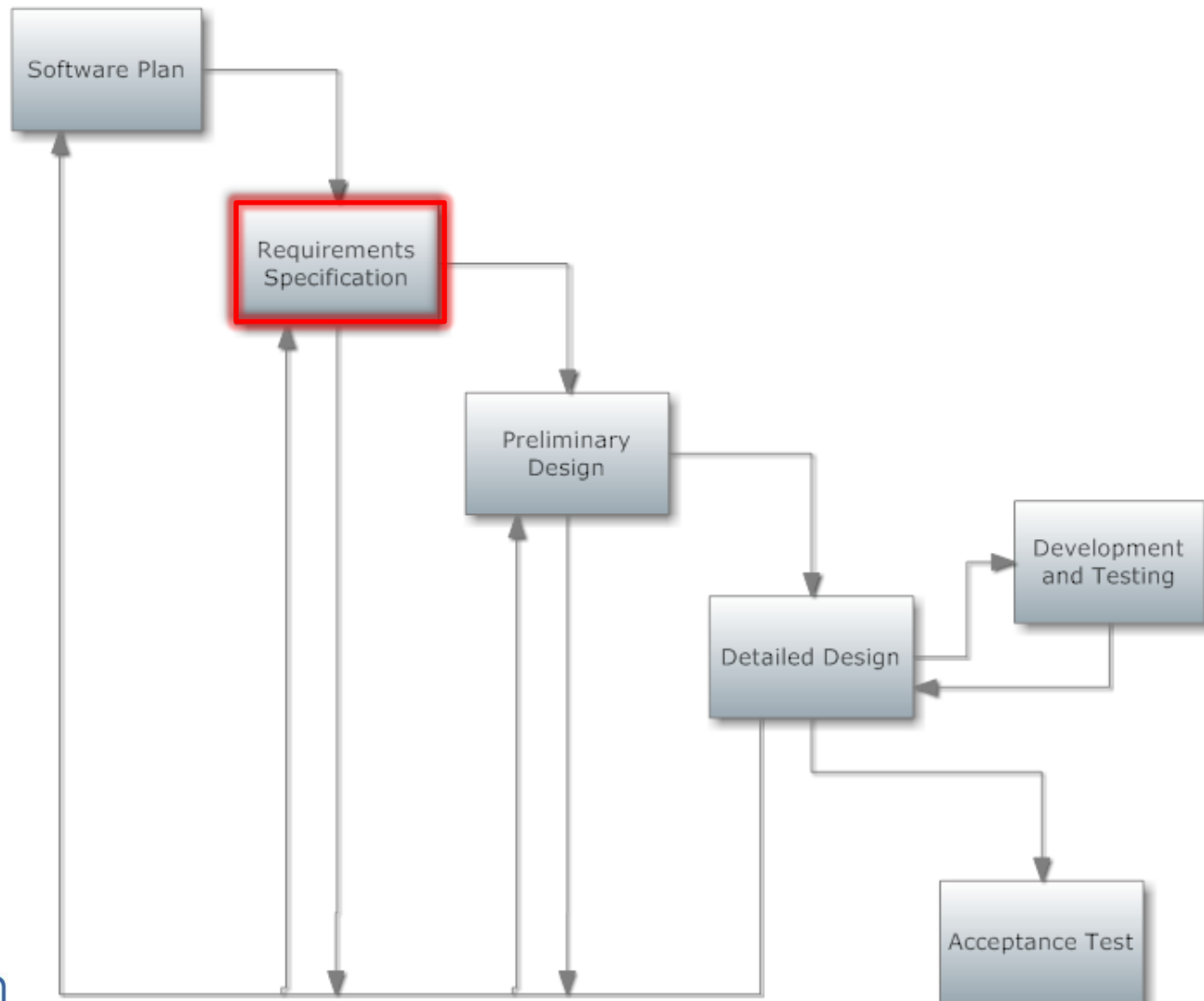
Introduction

- Shannon Pfohl: Team Leader
- Paul Cherrier: Webmaster
- Ryan Egan: Information Specialist
- Jordan Holoboski: Database Administrator
- Kathleen O'Hara: System Admin/Developer
- Julian Thomas: Development Director

Agenda

- Introduction
- **Project Progression**
- Product Overview
- User Case Narratives
- User Permission Chart
- UML Use Case Diagram
- Data Flow Diagrams
- Requirements Inventory
- Non-Functional Requirements
- Prototypes
- What's Next

Project Progression



10/30/2013

Agenda

- Introduction
- Project Progression
- **Product Overview**
- User Case Narratives
- User Permission Chart
- UML Use Case Diagram
- Data Flow Diagrams
- Requirements Inventory
- Non-Functional Requirements
- Prototypes
- What's Next

Product Overview

- PRISM records all hours by employees
- Team Leaders can take attendance
- Team members make evaluations of the team
- System Administrator controls all
- Create a database
- Web Application

Agenda

- Introduction
- Project Progression
- Product Overview
- **User Case Narratives**
- User Permission Chart
- UML Use Case Diagram
- Data Flow Diagrams
- Requirements Inventory
- Non-Functional Requirements
- Prototypes
- What's Next

User Case Narratives

- Describes the privileges of each user
- Shows how each user will interact with PRISM

User Case Narratives: Employee

- Log in/out
- Log hours
- Makes evaluations on team members
- Sees the average evaluation score

User Case Narratives: Team Leader

- Log in/out
- Log hours
- Makes evaluations on team members
- See average evaluation score
- Send out reminder emails for deadlines
- Records Attendance

User Case Narratives: Supervisor

- Log in/out
- Log hours
- Makes evaluations on team members
- Sees evaluations of supervised employees

User Case Narratives: System Administrator

- Log in/out
- Makes evaluations on team members
- Send out reminder emails for deadlines
- Has access to all information within PRISM

Agenda

- Introduction
- Project Progression
- Product Overview
- User Case Narratives
- **User Permission Chart**
- UML Use Case Diagram
- Data Flow Diagrams
- Requirements Inventory
- Non-Functional Requirements
- Prototypes
- What's Next

User Permission Chart (UPC)

EVALUATIONS

	Submit Evaluation(s) Of Subordinate(s)	Submit Evaluation(s) For Other Member(s) On the Same Team	View Average Score On Own Evaluation(s)	View Complete Evaluation(s) Of Subordinate(s)
System Administrator	X	X	X	X
Supervisor	X	X	X	X
Team Leader	X	X	X	X
Employee		X	X	

HOURS

	Record Hours	View Own Recorded Hours	View Hours Recorded By Subordinate(s)	Confirm Hours Recorded By Subordinate(s)	View Other Team(s) Average Hours
System Administrator	X	X	X	X	X
Supervisor	X	X	X	X	X
Team Leader	X	X	X	X	X
Employee	X	X			X

ATTENDANCE

	Record Attendance	View Attendance Of Subordinate(s)
System Administrator	X	X
Supervisor		X
Team Leader	X	X
Employee		

LEGEND

X -Enabled Permission

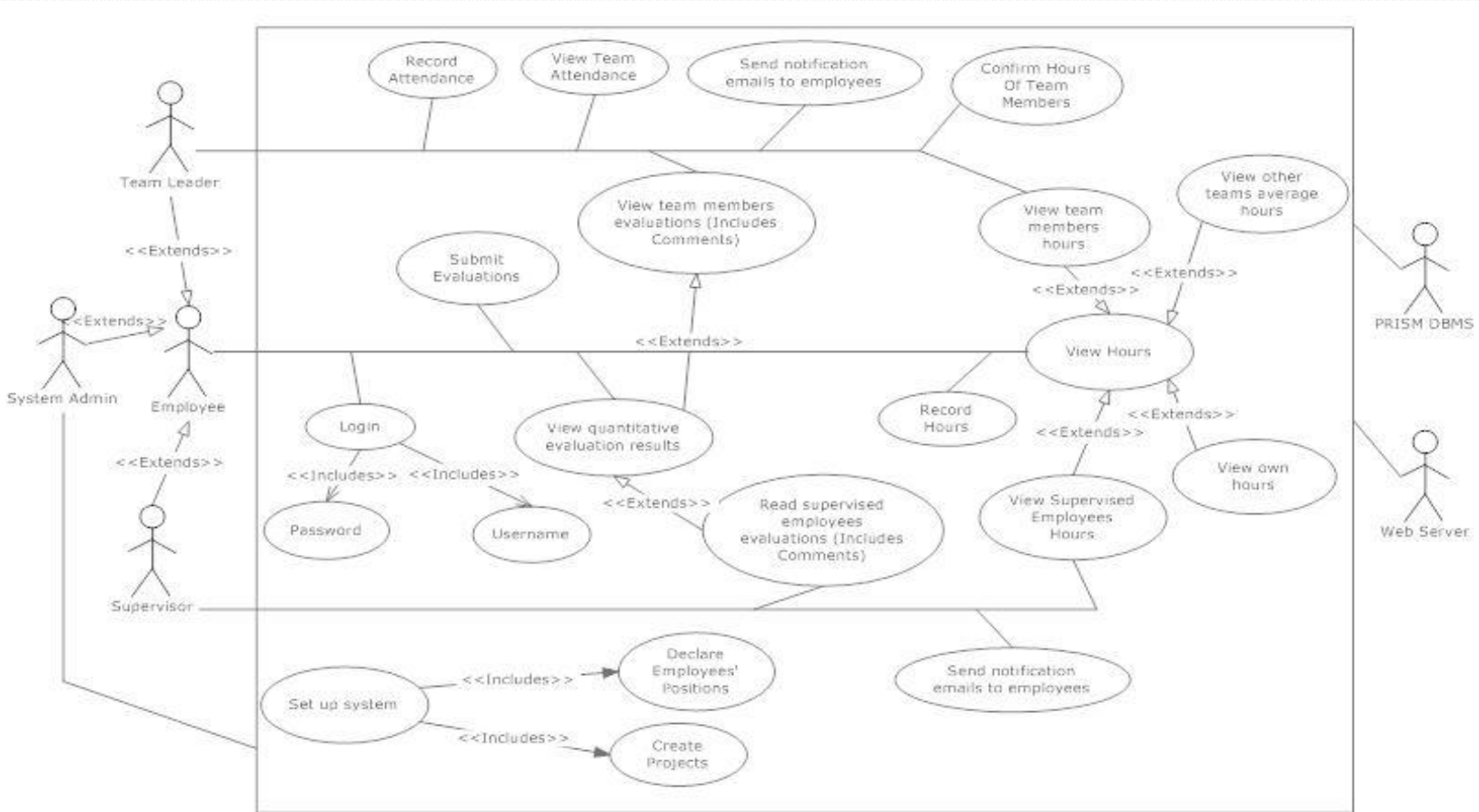
MISC.

	Log In	Set Up System	Send Email Notifications To Employees	Add Users To System	Delete Users From System	Manage User Permissions
System Administrator	X	X	X	X	X	X
Supervisor	X		X			
Team Leader	X		X			
Employee	X					

Agenda

- Introduction
- Project Progression
- Product Overview
- User Case Narratives
- User Permission Chart
- **UML Use Case Diagram**
- Data Flow Diagrams
- Requirements Inventory
- Non-Functional Requirements
- Prototypes
- What's Next

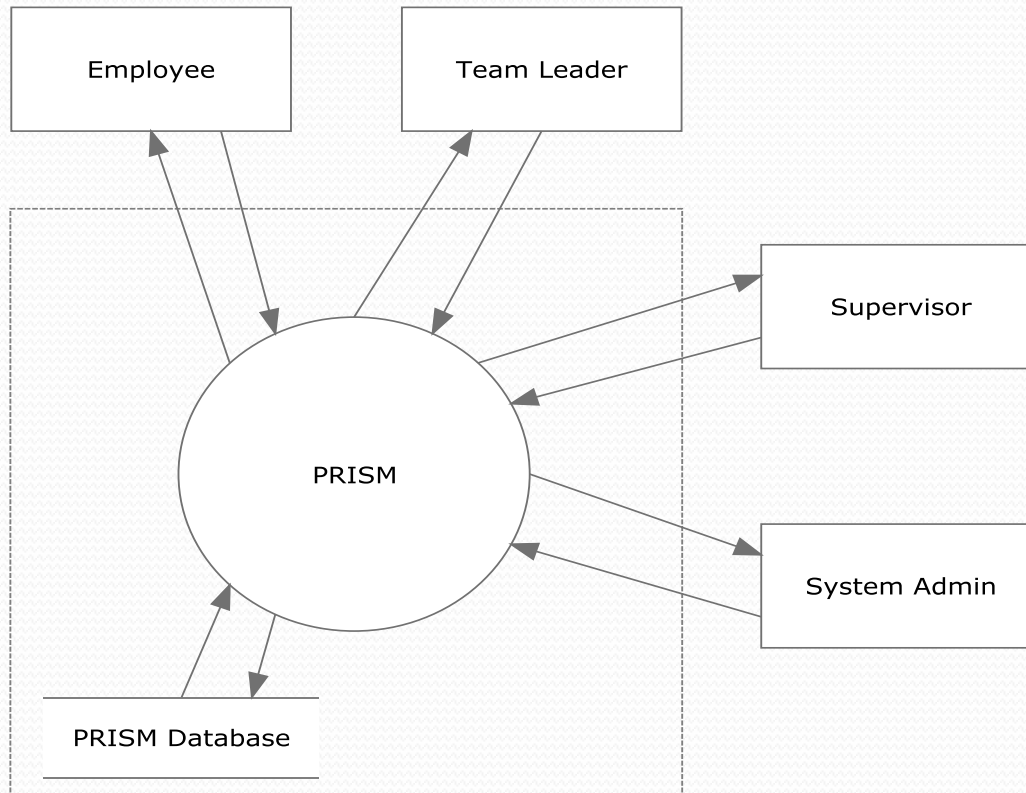
UML Use Case Diagram



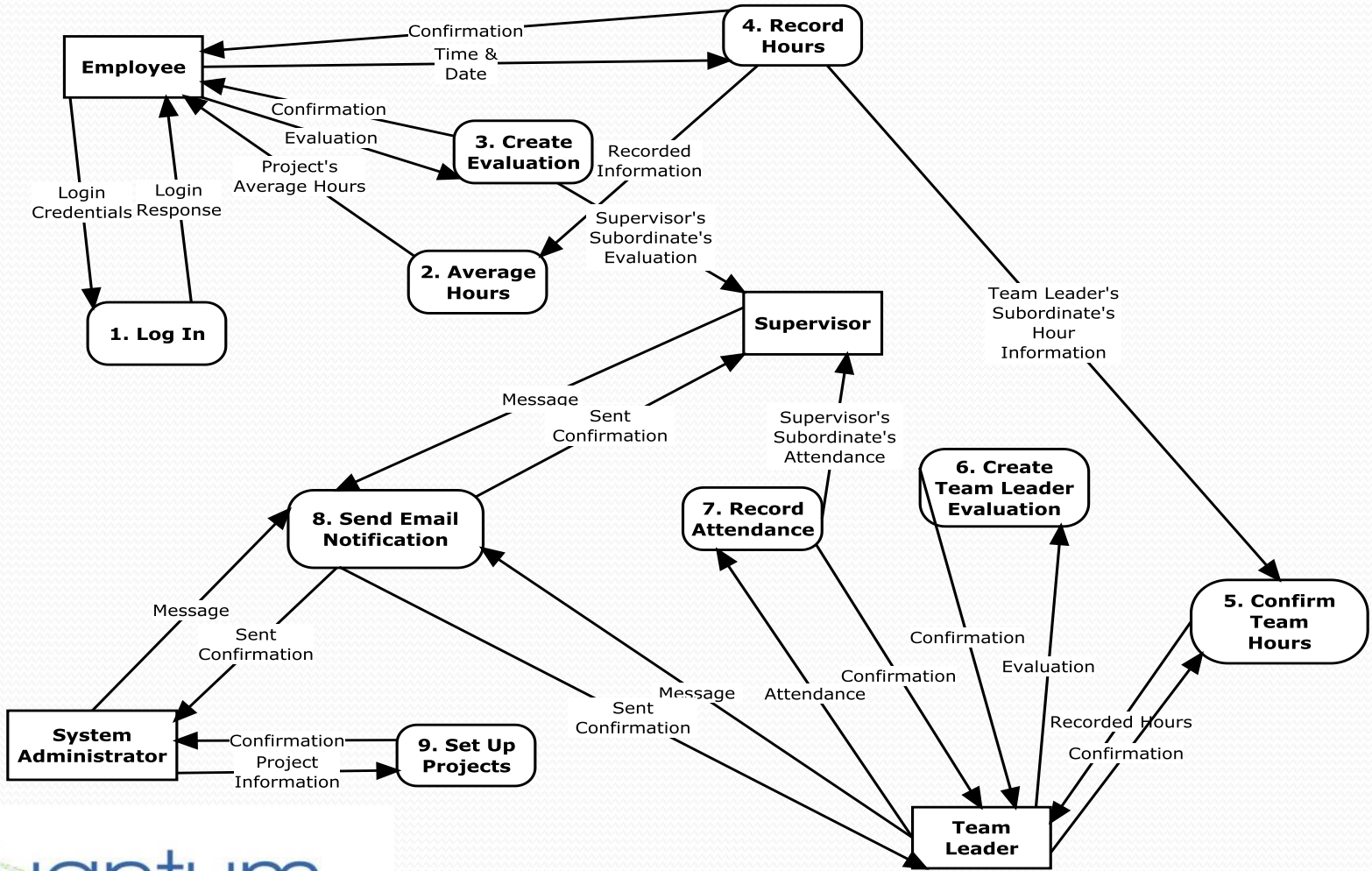
Agenda

- Introduction
- Project Progression
- Product Overview
- User Case Narratives
- User Permission Chart
- UML Use Case Diagram
- **Data Flow Diagrams**
- Requirements Inventory
- Non-Functional Requirements
- Prototypes
- What's Next

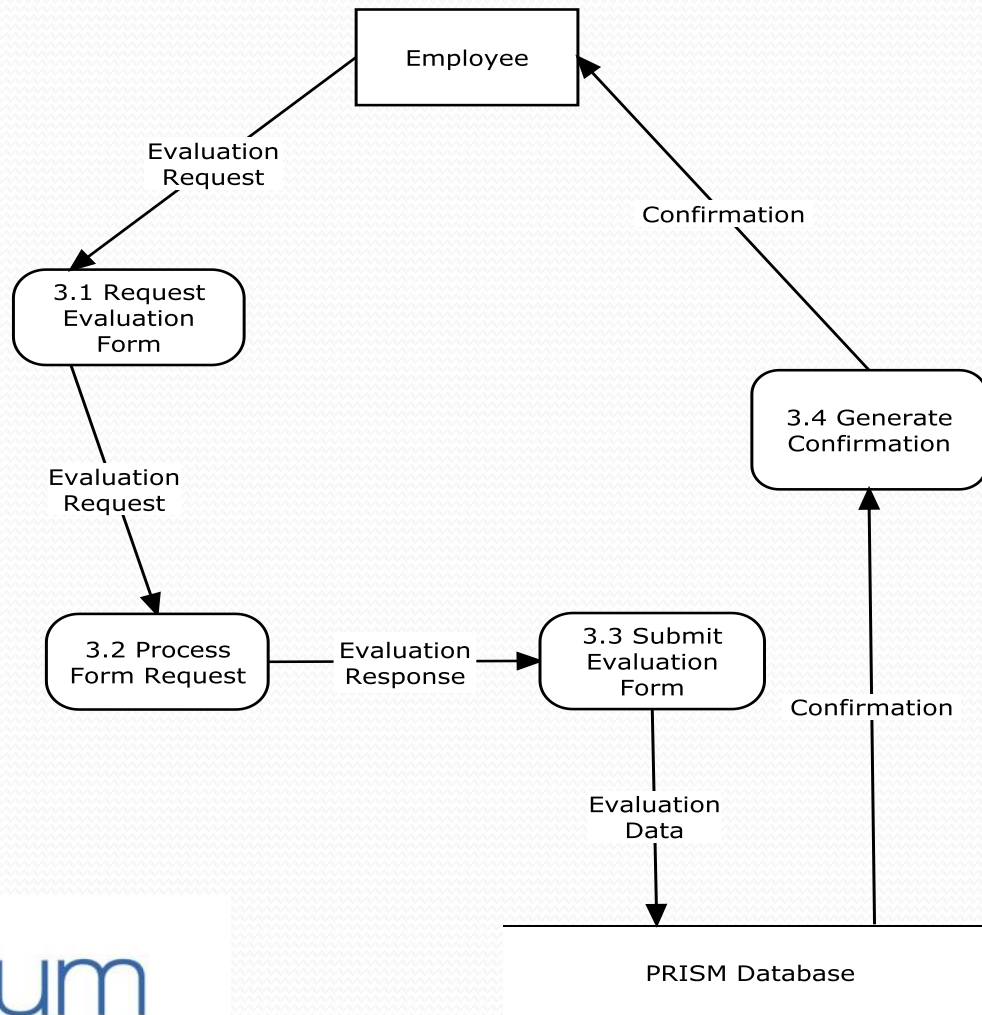
Context Diagram



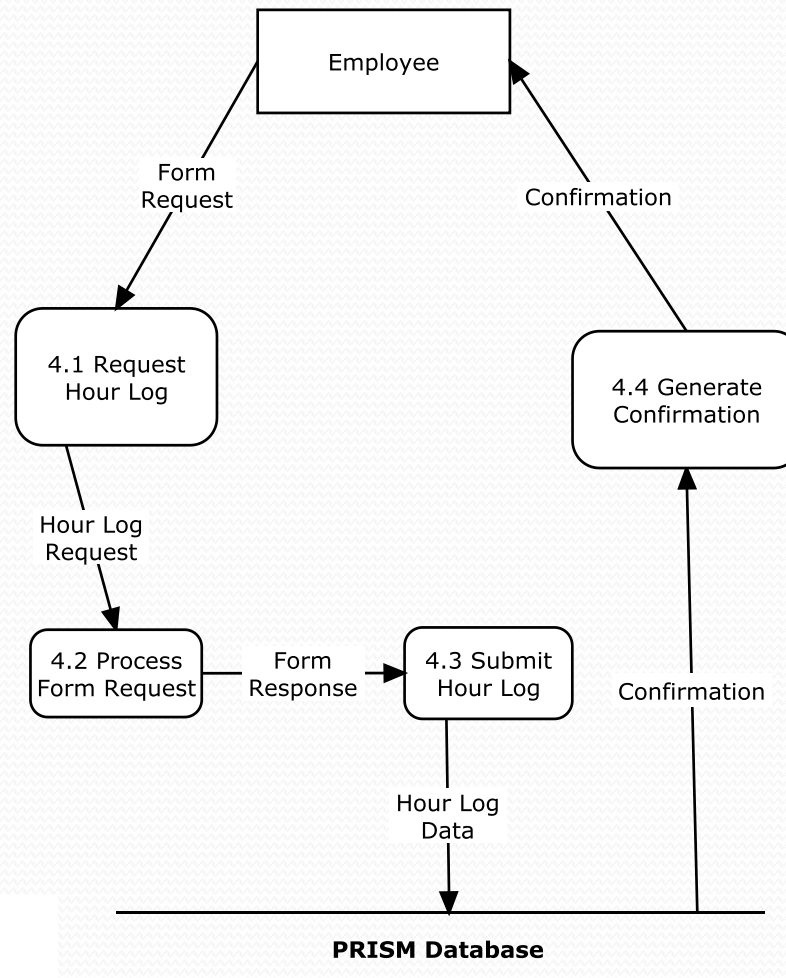
Level 0 Diagram



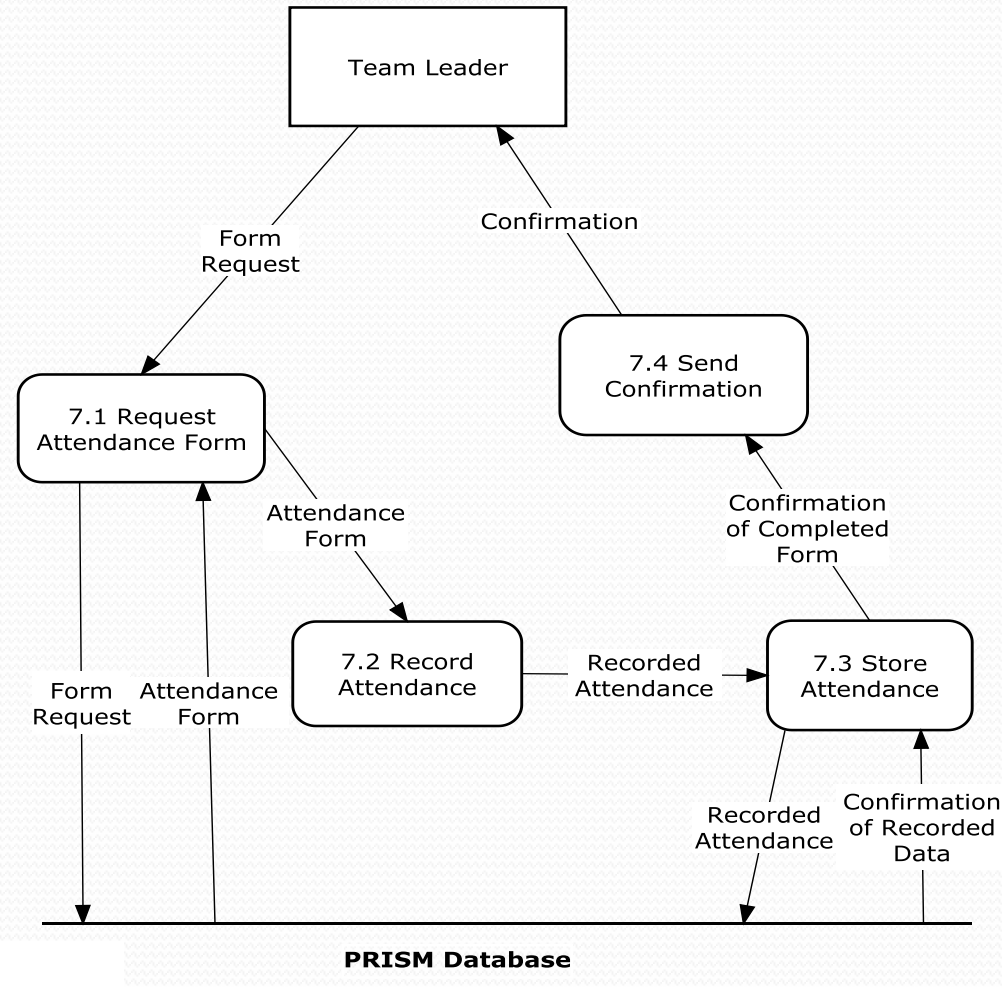
Level 1: Create Evaluation



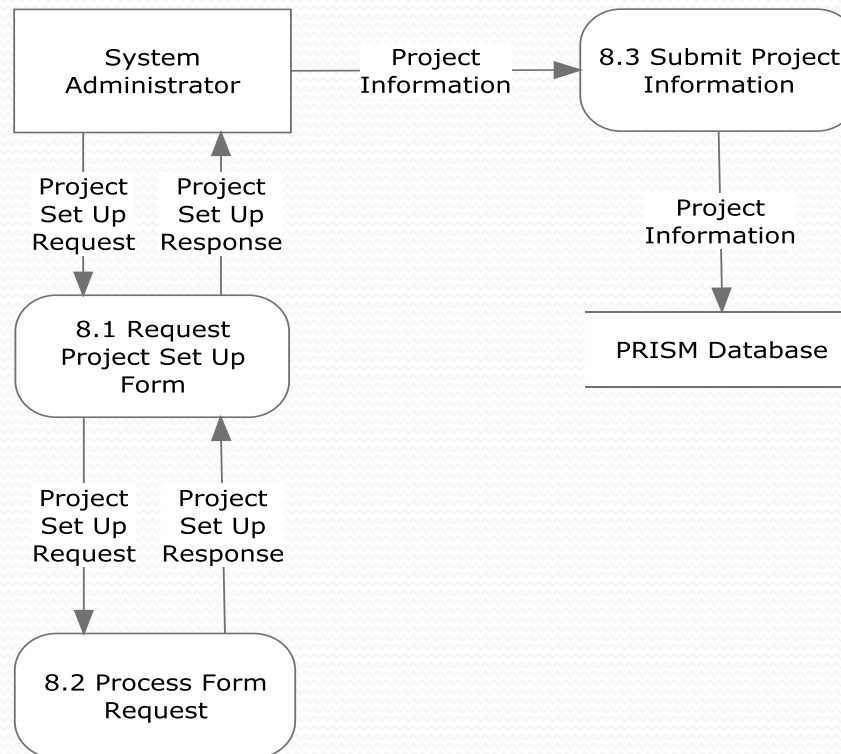
Level 1: Record Hours



Level 1: Record Attendance



Level 1: Set Up Projects



Agenda

- Introduction
- Project Progression
- Product Overview
- User Case Narratives
- User Permission Chart
- UML Use Case Diagram
- Data Flow Diagrams
- **Requirements Inventory**
- Non-Functional Requirements
- Prototypes
- What's Next

Requirements: Employee

- Login / logout
- Record hours
- View hours
- Submit evaluations

Requirements: Team Leader

- Record attendance
- Confirm hours
- Submit evaluations
- View evaluations
- Send automated emails

Requirements: Supervisor

- View hours
- Submit evaluations
- View evaluations
- Send automated emails

Requirements: System Admin

- Create / modify accounts
- Add projects
- Assign projects
- Assign team leaders and supervisors
- Has access to all information

Agenda

- Introduction
- Project Progression
- Product Overview
- User Case Narratives
- User Permission Chart
- UML Use Case Diagram
- Data Flow Diagrams
- Requirements Inventory
- **Non-Functional Requirements**
- Prototypes
- What's Next

Non-Functional Requirements

The system will be:

- Efficient
- User friendly
- Usable on multiple browsers
 - Safari, IE, Chrome, Firefox
- Easily maintained
- Stable

Agenda

- Introduction
- Project Progression
- Product Overview
- User Case Narratives
- User Permission Chart
- UML Use Case Diagram
- Data Flow Diagrams
- Requirements Inventory
- Non-Functional Requirements
- **Prototypes**
- What's Next

Prototype: Team Member Evaluation Sheet

Team Member Evaluations

Client(s): Automated

Team Name: Automated

Your Name: Automated

Project Phase: Automated

Name	% of Work (0-100%)	Quality of Work (0-100%)	Comments
Automated	0	0	
Automated	0	0	
Automated	0	0	
Automated	0	0	
Automated	0	0	
Automated	0	0	
	Adds Up to 100% Automatically	Team Average Calculated Automatically	

Prototype: Team Leader Evaluation Sheet

Individual Contributor (Team Member) Rating Sheet

To be completed by Team Leaders

Team Leader Name: Automated

Team Member Name: Automated

Team Name: Automated

Project Phase: Automated

Rate the individual on each item below, using the following scale:

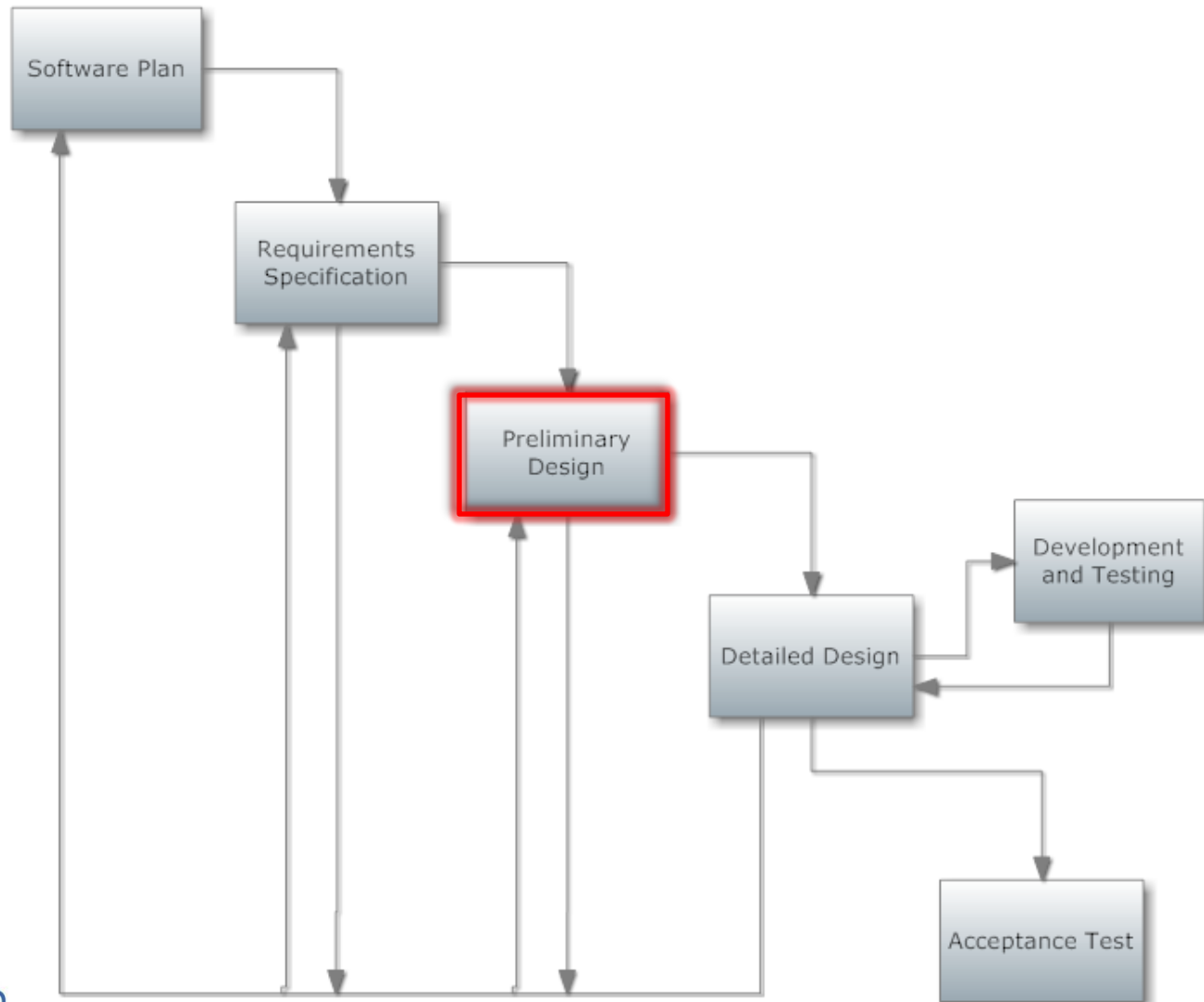
0-100 (0=lowest rating and 100=highest rating)

	Project Phase Rating	End of Semester <small>(To be completed at the end of the semester)</small>
Quality of work	<u> </u>	<u> </u>
Timeliness of Work	<u> </u>	<u> </u>
Attendance at Meetings	<u> </u>	<u> </u>
Participation at Meetings	<u> </u>	<u> </u>
Cooperation Within Group	<u> </u>	<u> </u>
Effort Extended	<u> </u>	<u> </u>

Agenda

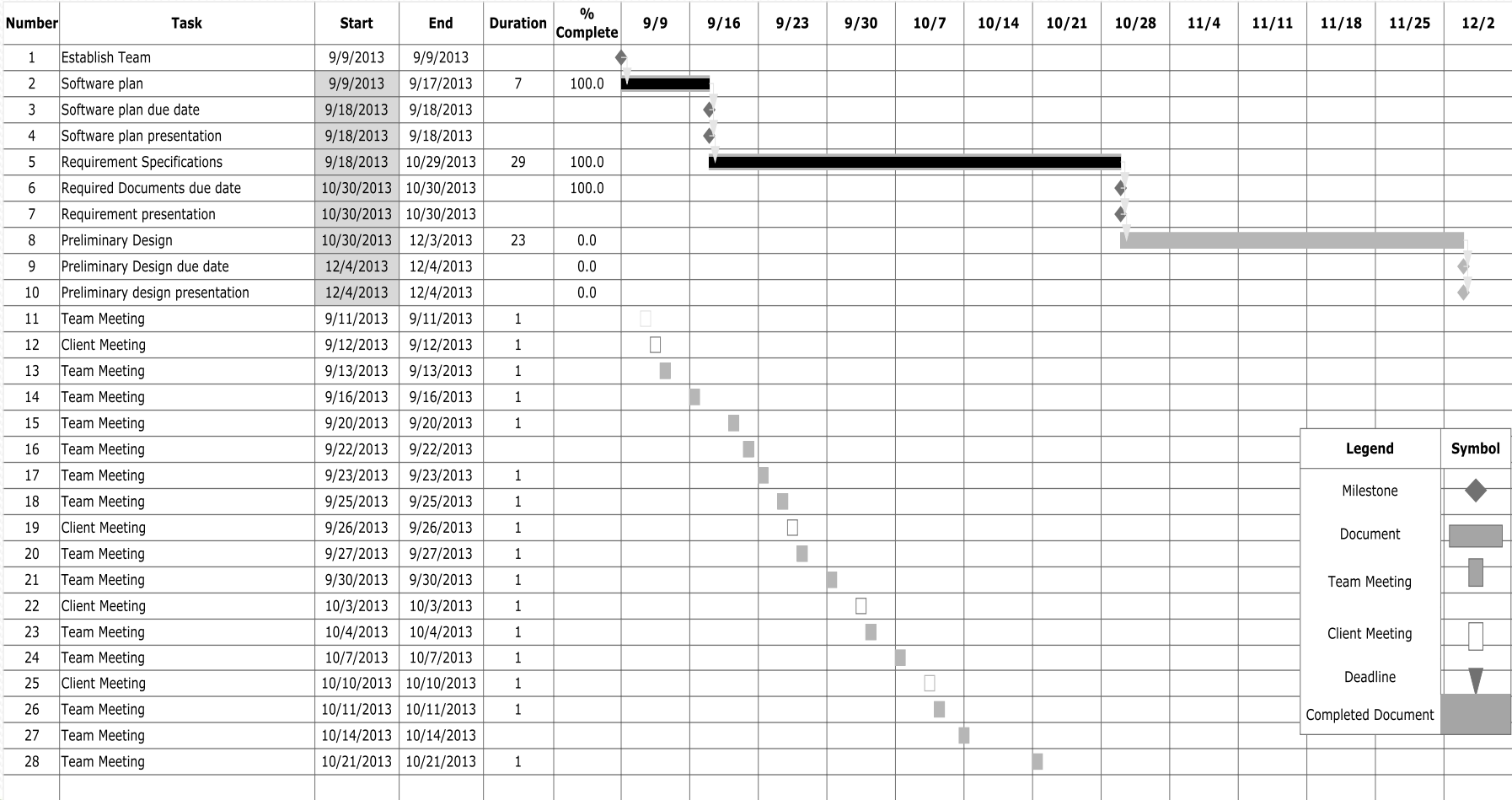
- Introduction
- Project Progression
- Product Overview
- User Case Narratives
- User Permission Chart
- UML Use Case Diagram
- Data Flow Diagrams
- Requirements Inventory
- Non-Functional Requirements
- Prototypes
- **What's Next**

What's Next



What's Next

Quantum Technologies Project Timeline



Legend	Symbol
Milestone	◆
Document	■
Team Meeting	■
Client Meeting	□
Deadline	▼
Completed Document	■

Thank You!

Questions or Comments?

