

Lightweight E-book Access Platform

LEAP



3/11/2015

Welcome

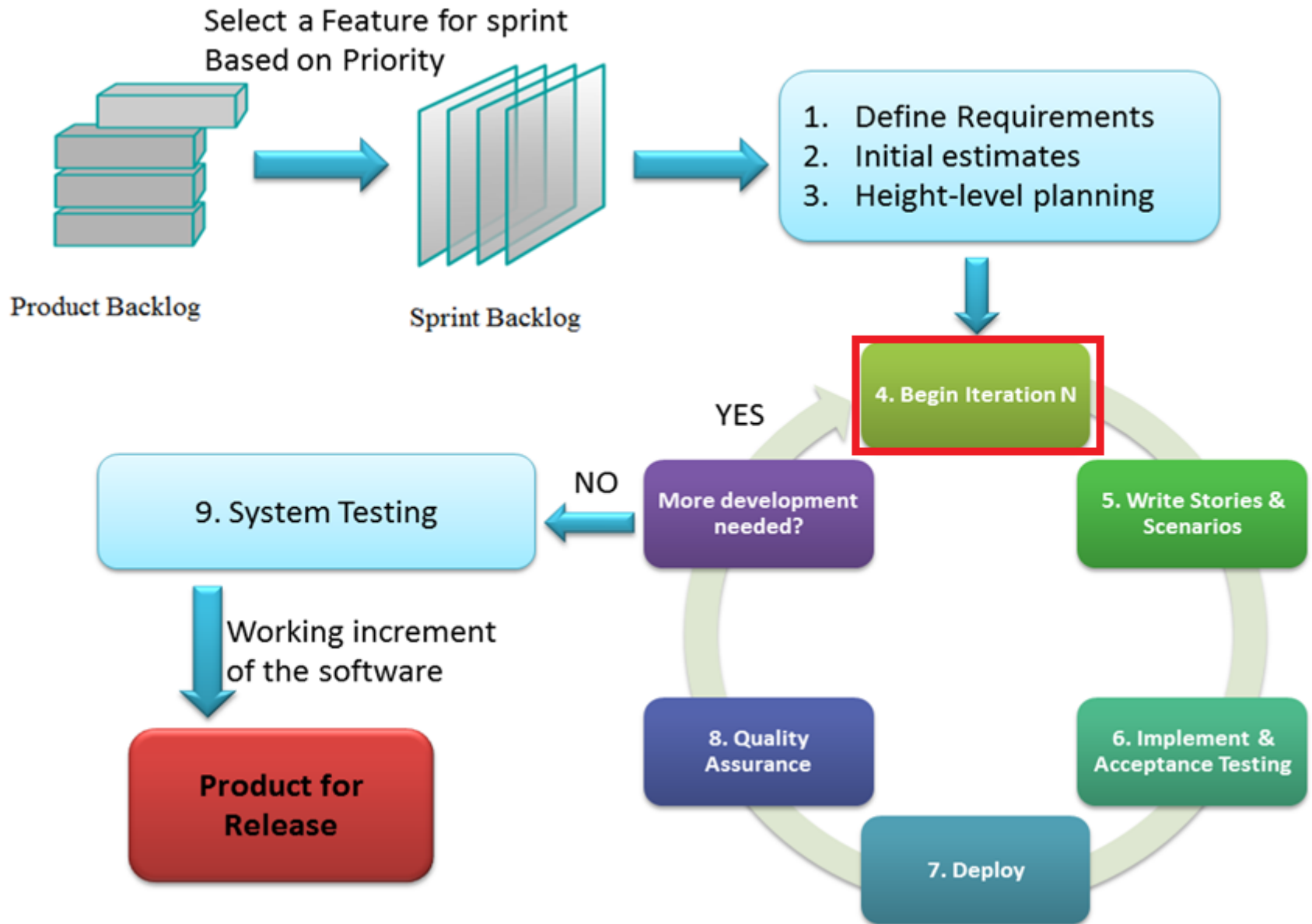
- Clients
 - Jen Cannell
 - J'aimé Pfeiffer

Introduction

- Garrett Allen- Team Leader
- Damian Crisafulli - Webmaster
- Josh McDonald - Database Administrator
- Amar Mian – Lead Programmer
- Justin Rousseau - Web Developer

Problem Definition

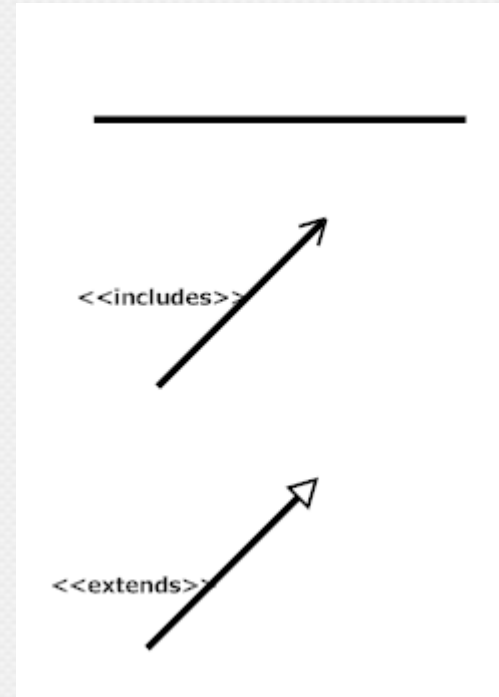
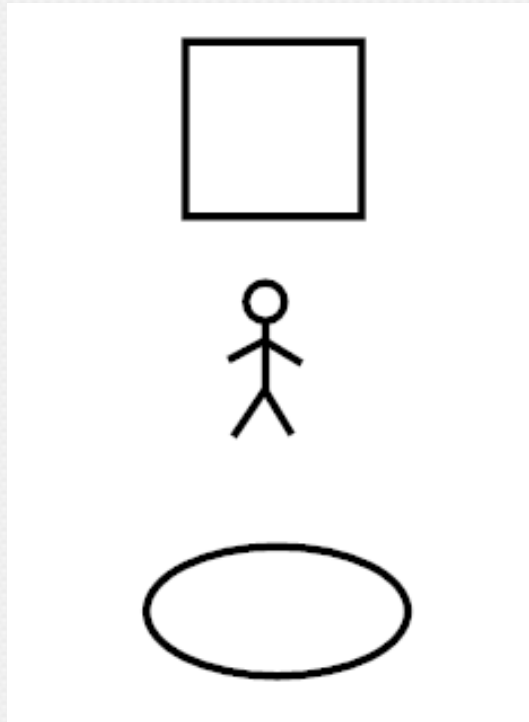
- No central point of access
- Difficult for students to remember login information
- Inconsistent interfaces



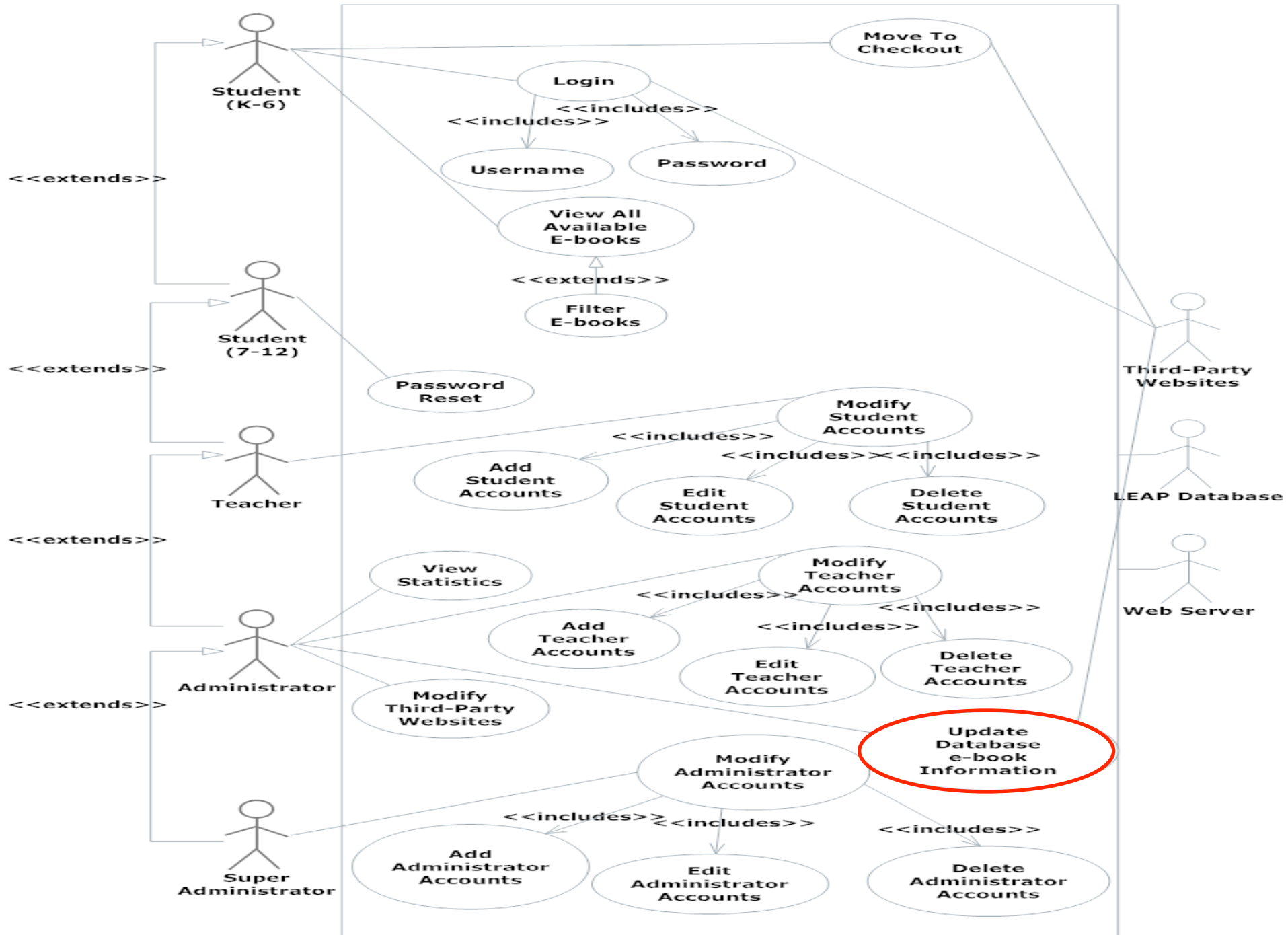
Sprint 2 and 3

- Display
- Checkout

UML Use Case Diagram Legend



LEAP



Activity Diagram Legend



Initial Node - The initial node is the first node in the process. The initial node is the starting point for all movement.



Final Node - The final node is the last node in the process. When the activity flow has reached here, the process is over. There may be more than one final node.



Activity Node - Describes behaviors that will take place at this step, where activity is the behavior.

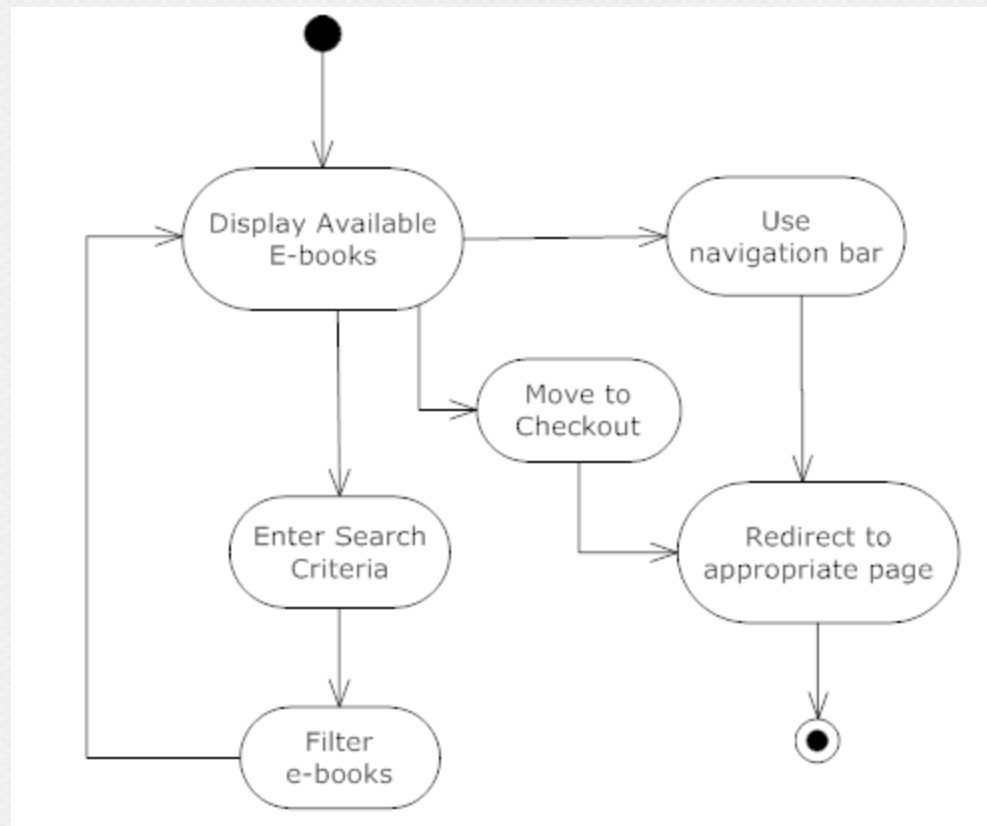


Decision Node - Takes an incoming edge and presents multiple outgoing edges based on the decision of the process. The decision is typically posed as a question.



Flow - Shows the movement of action from one node to another.

Activity Diagram



Website Map Legend



Home - Represents the main page the user will see upon a successful login.



Form – Represents data fields which require user input.



Page – Represents a web page within LEAP.



Script – Represents a script that is run.



Red Outlined Shapes – Represents work to be done in future sprints.

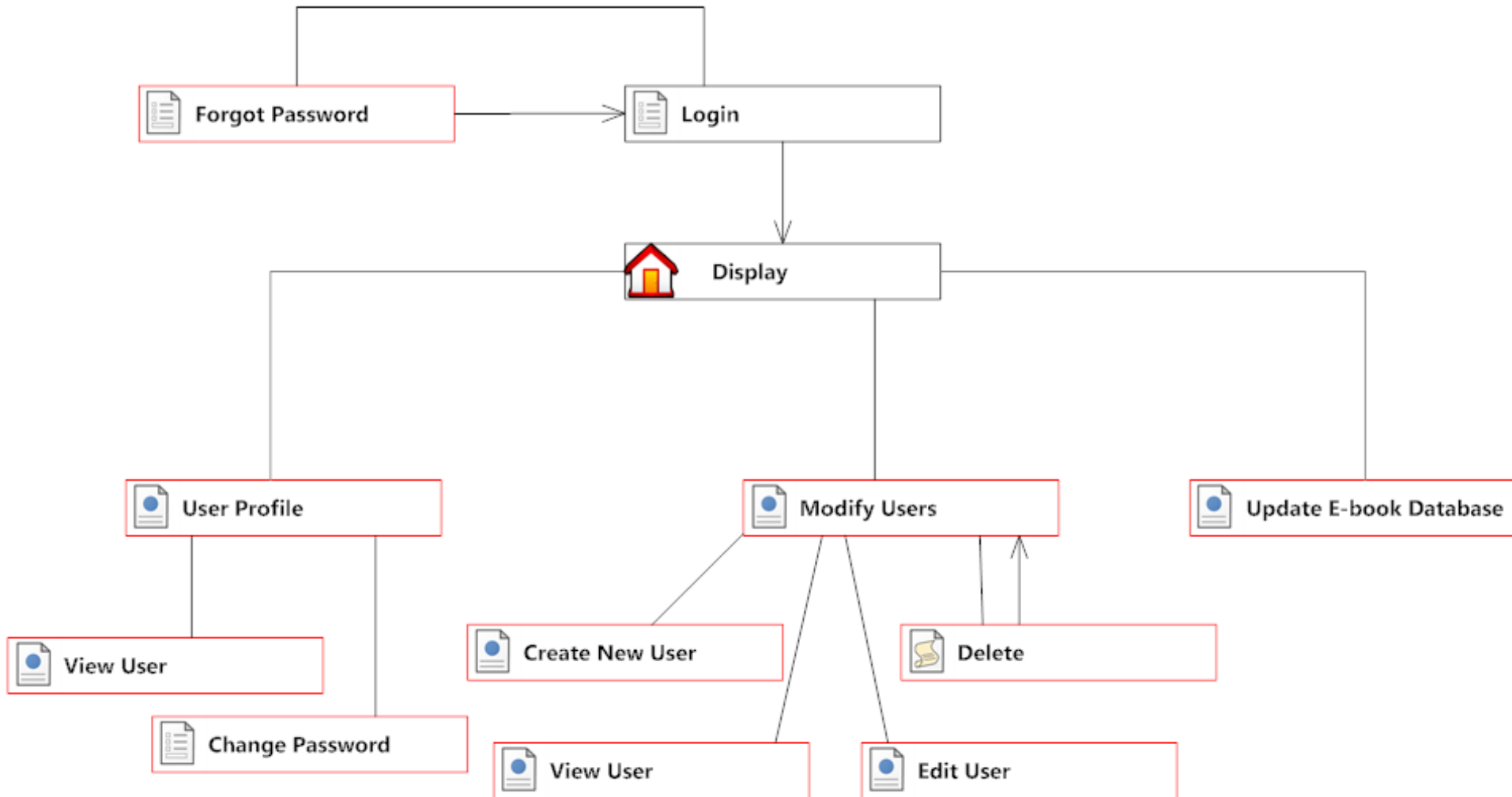


Page Redirect – represents a forced reroute to a new page depending on user interaction.



Link – Represents a page being accessible from another page.

Website Map



Data Flow Legend



External entity: Contributes data or information to the system or which receive data from it.



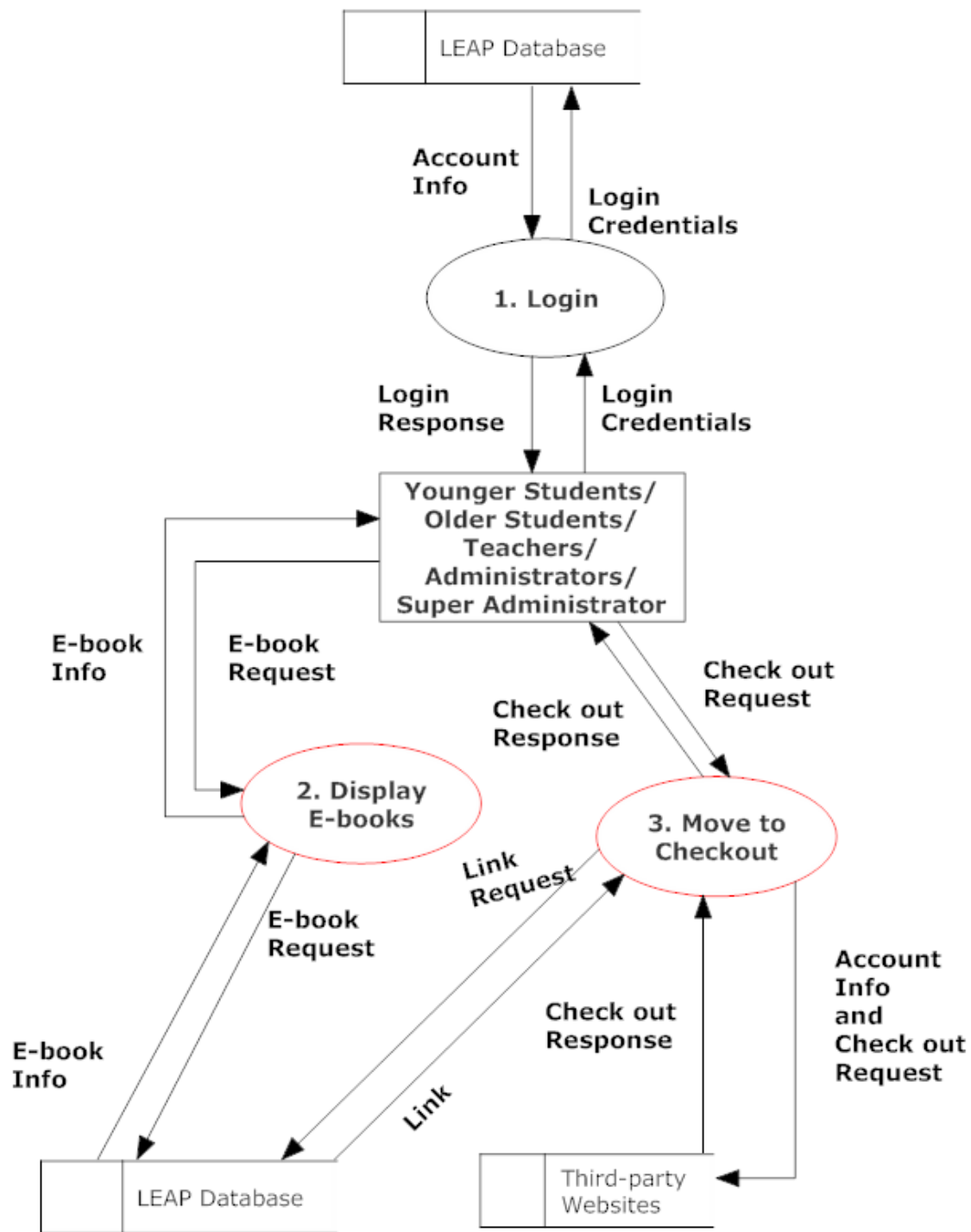
Process: Transforms or manipulates data

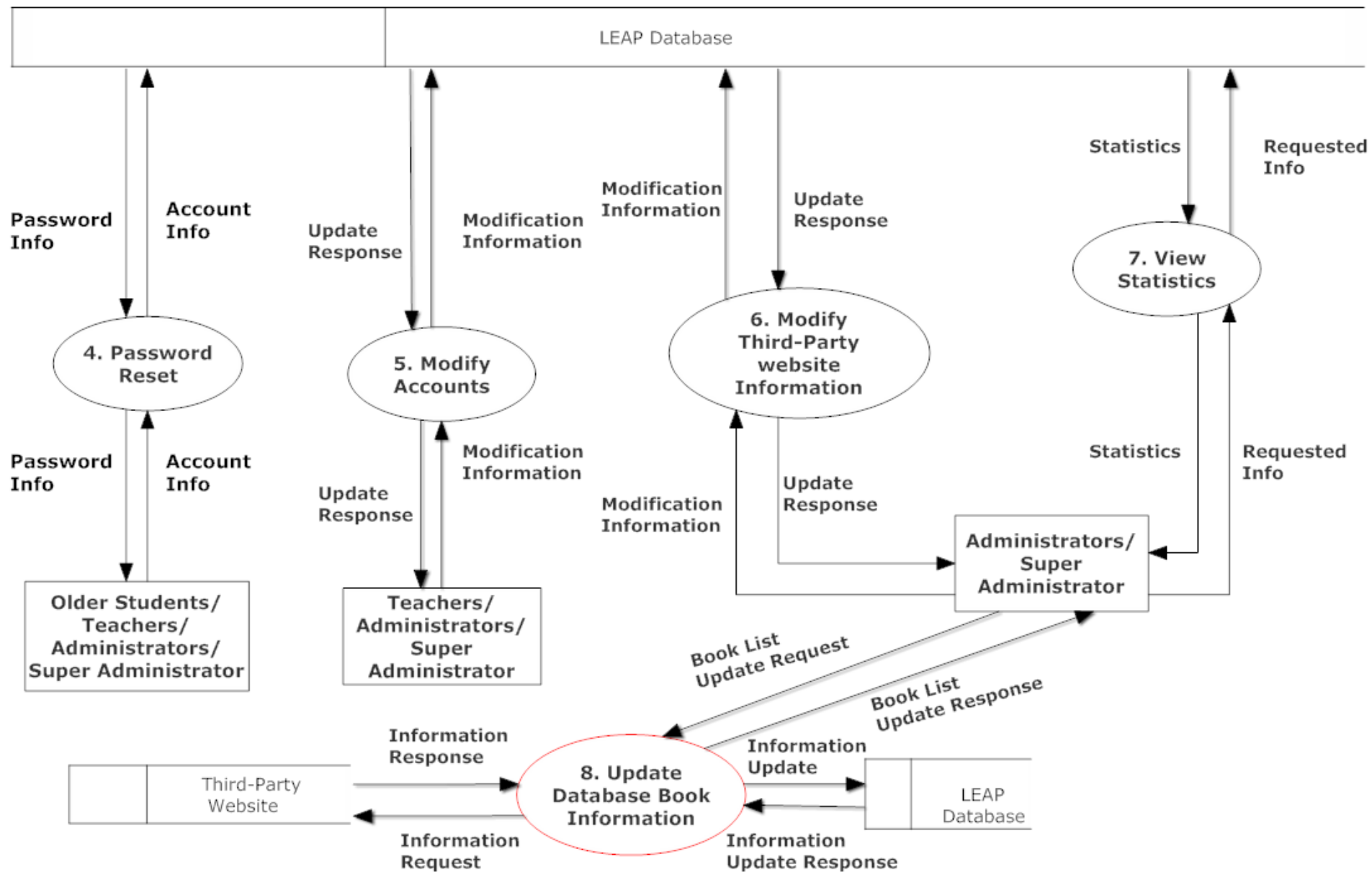


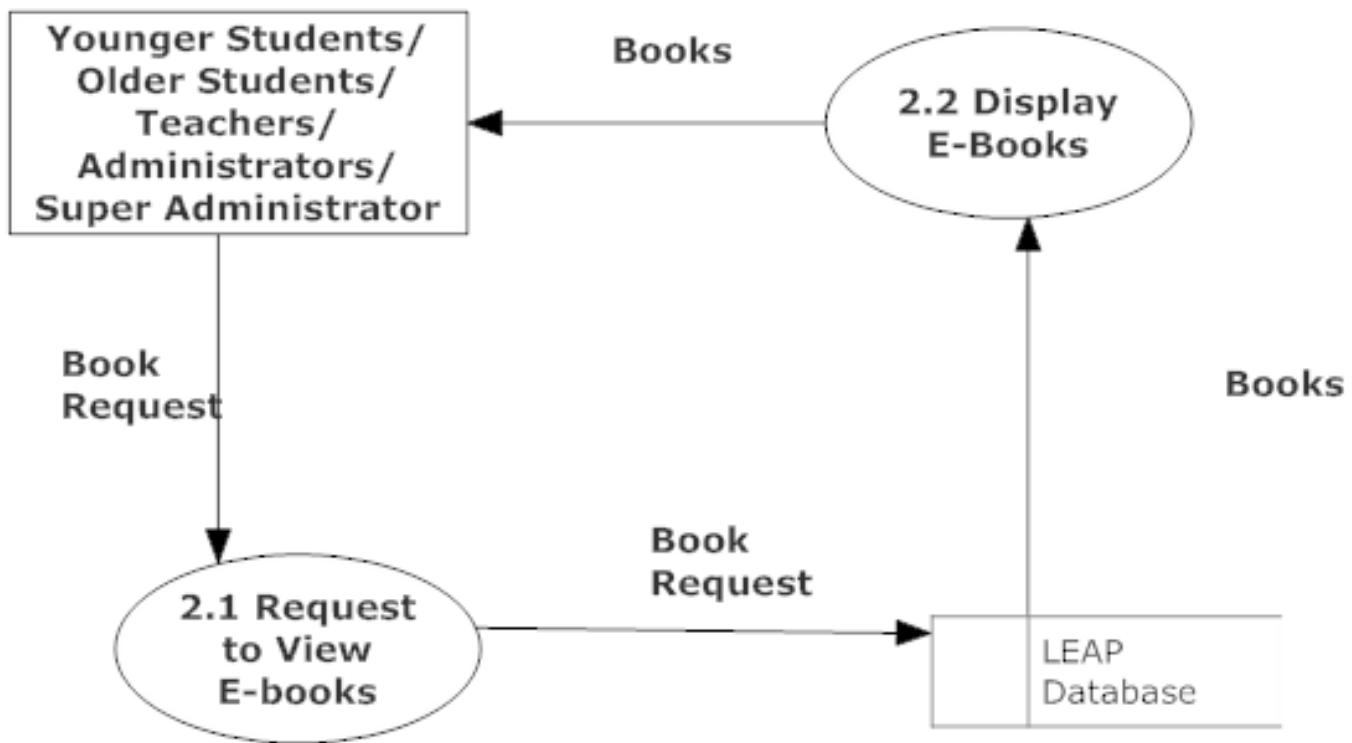
Data Store: Location where data is held temporarily or permanently.

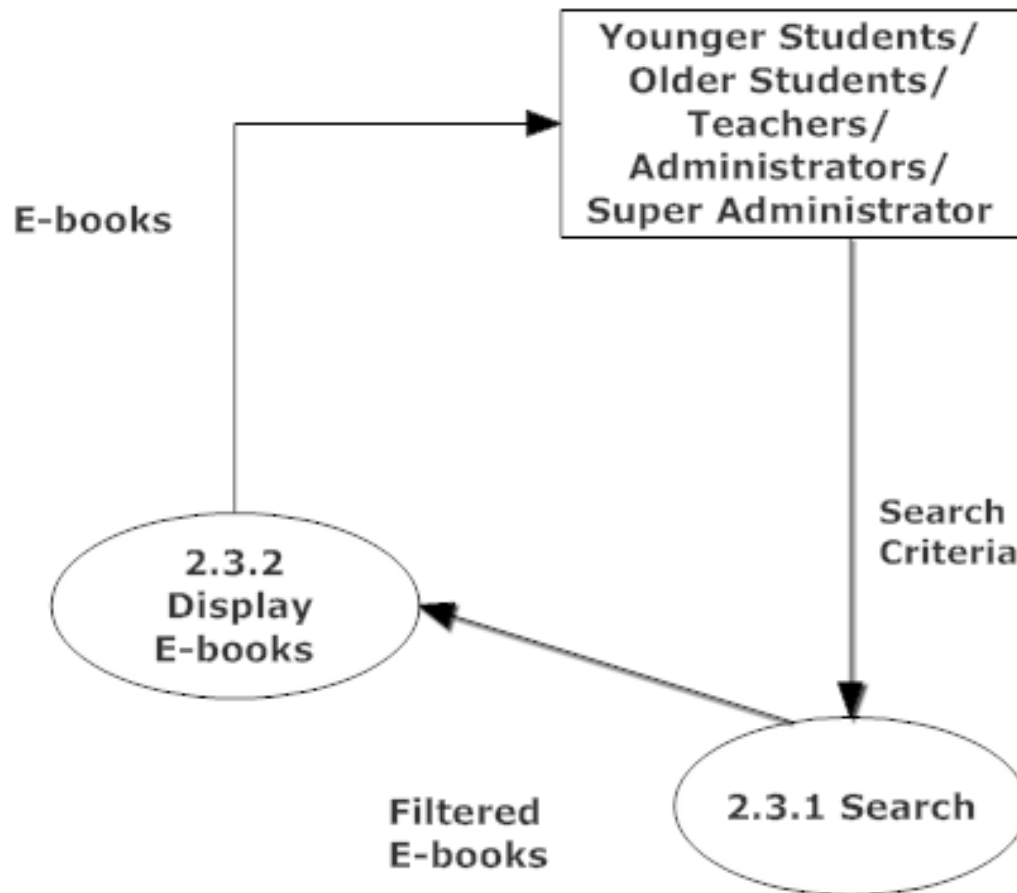


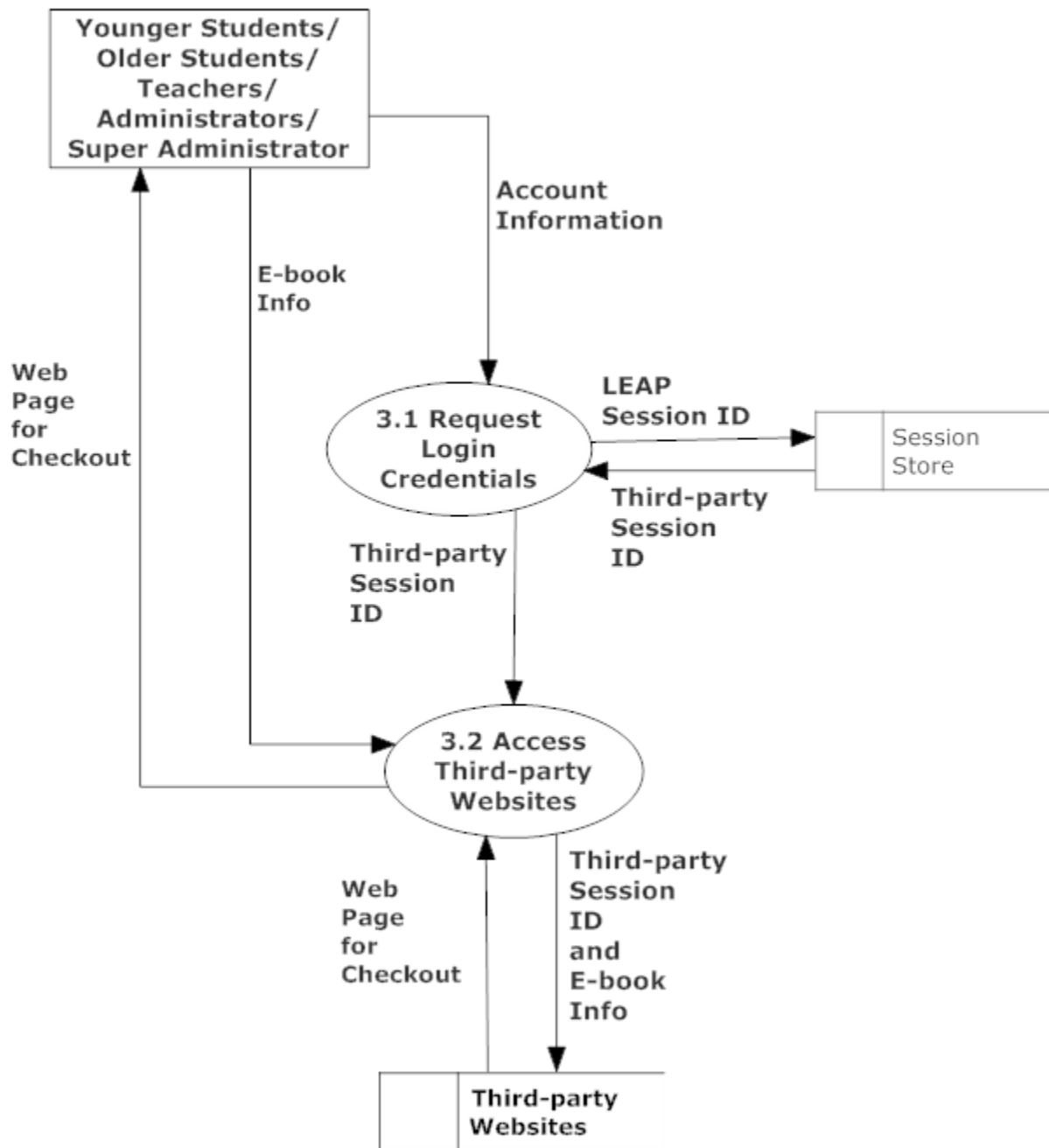
Data Flow: Data flowing to or from a process where X is the data.





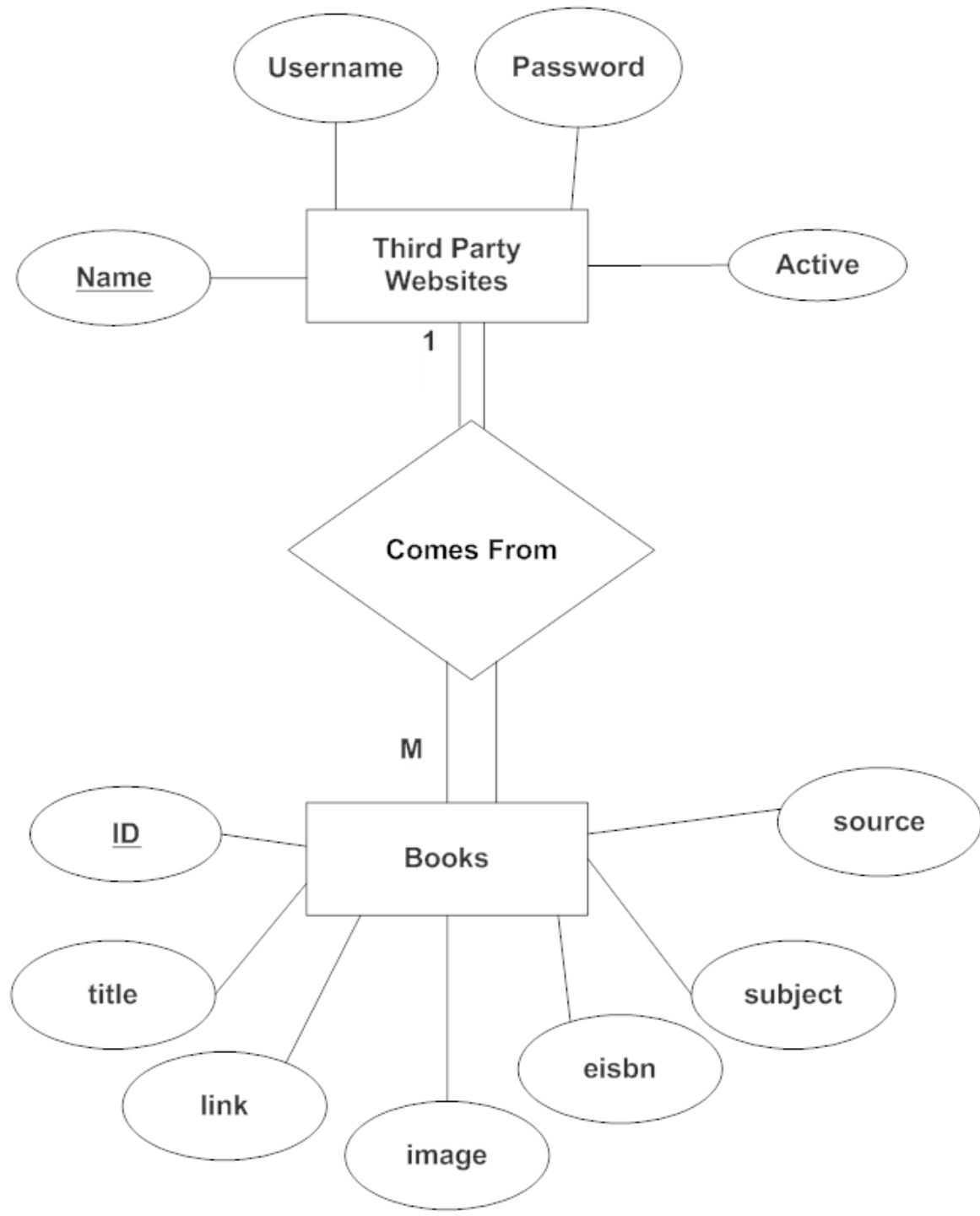






Data Dictionary

| Data Name | Data Type | Data Type Size | Description | Applicable to | Acceptable Input | Example | Comments |
|-------------|-----------|----------------|--|--------------------|-------------------------------|---|---|
| ID | int | 1-32bits | The unique identifying number for a book | Displaying E-Books | int | | Book id 1 would be the first book added to the system |
| Title | varchar | 128 characters | The title of the book | E-Book display | Letters, Numbers, and Symbols | Big Java | |
| Link | varchar | 256 characters | Link to the E-Book on the vendor's site | E-Book display | A valid link | http://www.rosenlearningcenter.com/book/273 | |
| Image | varchar | 256 characters | An image of the book | E-Book display | A proper image | | |
| eisbn | int | 13 bits | The eisbn of the book | E-Book display | A valid eisbn number | 9781476730400 | |
| Subject | varchar | 64 characters | The subject of the book | E-Book display | Letters, Numbers, and Symbols | Non-Fiction | Can be null |
| Source | varchar | 32 characters | Where the book came from | E-Book display | Letters, Numbers, and Symbols | Rosen Learning Center | |
| Author | varchar | 64 characters | Books author | E-Book display | Letters, Numbers, and Symbols | Josh MacDonald | Can be null |
| Description | varchar | 512 characters | Description of the book | E-Book display | Letters, Numbers, and Symbols | Big Java teaches you java. | Can be null |



Sprint Test Results

| | A | B | C | D | E | F | G | H | I | J | K |
|----|---|--------------------|--|---|---|---------------------------------|---|--|--|------------------|------------------|
| 1 | LEAP | | | | | | | | | | |
| 2 | Display and Checkout on browser Chrome | | | | | | | | | | |
| 3 | Display the e-books and click on checkout to go to one of the e-books | | | | | | | | | | |
| 4 | | | | | | | | | | | |
| 5 | Test Cases | | | | | | | | | | |
| 6 | Pass/Fail Status | Test Number | Description | Action to perform test (input) | Steps to be Executed | State Before Test | Expected result | Observed result | Comments | Tested By | Test Date |
| 7 | P | 1.001 | Go to display page without logging in | Use the display url to go directly to display page | Type the url and hit go | User is not logged in | Redirected to log in page | User is redirected to log in page | | Omega Tech | 3/5/2015 |
| 8 | P | 1.002 | Log in and see if user is directed to display page | Log in to LEAP | Fill out correct log in credentials and captcha | User not logged in | On a successful log in the user is directed to the display page | The user is directed to the display page | Books are displayed ordered by title as expected | Omega Tech | 3/5/2015 |
| 9 | P | 1.003 | Reverse order e-books by title | Leave everything as it was and just click the check box for reverse? | Click on the reverse check box | reverse check box was unchecked | E-books are ordered by title in reverse order | E-books are ordered by title in reverse order | | Omega Tech | 3/5/2015 |
| 10 | P | 1.004 | Order by Author | Leave everything blank, reverse unchecked, and pick author for order by | Selected order by author | Ordered by title | E-books are ordered by author | E-books are ordered by author | E-books with no author value are listed first | Omega Tech | 3/5/2015 |
| 11 | P | 1.005 | Order by Author reverse | Leave everything blank, order by author, and have reverse checked | Selected order by author and check reverse | Ordered by title | E-books are ordered by author in a reverse order | E-books are ordered by author in a reverse order | E-books with no author value are listed last | Omega Tech | 3/5/2015 |
| 12 | P | 1.006 | Order by ISBN | Leave everything blank, reverse unchecked, and pick ISBN for order by | Selected order by ISBN | Ordered by title | E-books are ordered by ISBN | E-books are ordered by ISBN | E-books with no ISBN value are listed first | Omega Tech | 3/5/2015 |

| | | | | | | | | | | | |
|----|---|-------|--------------------------|---|--|---|--|--|--|------------|----------|
| 13 | P | 1.007 | Order by ISBN reverse | Leave everything blank, order by ISBN, and have reverse checked | Selected order by ISBN and check reverse | Ordered by title | E-books are ordered by ISBN in a reverse order | E-books are ordered by ISBN in a reverse order | E-books with no ISBN value are listed last | Omega Tech | 3/5/2015 |
| 14 | P | 1.008 | Order by subject | Leave everything blank, reverse unchecked, and pick subject for order by | Selected order by subject | Ordered by title | E-books are ordered by subject | E-books are ordered by subject | | Omega Tech | 3/5/2015 |
| 15 | P | 1.009 | Order by subject reverse | Leave everything blank, order by subject and have reverse checked | Selected order by subject and check reverse | Ordered by title | E-books are ordered by subject in a reverse order | E-books are ordered by subject in a reverse order | | Omega Tech | 3/5/2015 |
| 16 | P | 1.010 | Search by all | leave everything as it was and type a search keyword | Fill out a search keyword and leave everything else the same | Ordered by title with all books displayed | E-books with search keyword are displayed | E-books with search keyword are displayed | | Omega Tech | 3/5/2015 |
| 17 | P | 1.011 | Search by title | leave everything as it was and type a search keyword and choose search by title | Fill out a search keyword and choose search by title | Ordered by title with all books displayed | E-books with search keyword in title are displayed | E-books with search keyword in title are displayed | | Omega Tech | 3/5/2015 |
| 18 | P | 1.012 | Search by author | leave everything as it was and type a search keyword and choose search by author | Fill out a search keyword and choose search by author | Ordered by title with all books displayed | E-books with search keyword in author are displayed | E-books with search keyword in author are displayed | | Omega Tech | 3/5/2015 |
| 19 | P | 1.013 | Search by subject | leave everything as it was and type a search keyword and choose search by subject | Fill out a search keyword and choose search by subject | Ordered by title with all books displayed | E-books with search keyword in subject are displayed | E-books with search keyword in subject are displayed | | Omega Tech | 3/5/2015 |
| 20 | P | 1.014 | Search by ISBN | leave everything as it was and type a search keyword and choose search by ISBN | Fill out a search keyword and choose search by ISBN | Ordered by title with all books displayed | E-books with search keyword in ISBN are displayed | E-books with search keyword in ISBN are displayed | | Omega Tech | 3/5/2015 |
| 21 | P | 1.015 | Search by description | leave everything as it was and type a search keyword and choose search by description | Fill out a search keyword and choose search by description | Ordered by title with all books displayed | E-books with search keyword in description are displayed | E-books with search keyword in description are displayed | | Omega Tech | 3/5/2015 |
| 22 | P | 1.016 | Clear Filter | Do a search and then hit clear filters | Click on clear filters after a search was executed | Ordered by title, search key 'helps', and search by description | Clears all filters and displays all e-books ordered by title | Clears all filters and displays all e-books ordered by title | | Omega Tech | 3/5/2015 |

Sprint Test Results CONT'

| | | | | | | | | | | | |
|----|---|----------------|---|---|----------------------|-----------------|--|--|---------------------|------------|----------|
| 23 | P | 1.017 | Check out to Gale Virtual Reference library | click on checkout on a book by Gale Virtual Reference Library | Click on checkout | On page display | On page checkout of the desired e-book on Gale Virtual Reference Library website | On page checkout of the desired e-book on Gale Virtual Reference Library website | | Omega Tech | 3/5/2015 |
| 24 | P | 1.018 | Check out to Rosen Learning Center | click on checkout on a book by Rosen Learning Center | Click on checkout | On page display | On page checkout of the desired e-book on Rosen Learning Center website | On page checkout of the desired e-book on Rosen Learning Center website | | Omega Tech | 3/5/2015 |
| 25 | P | 1.019 | Click on LEAP logo | Click on LEAP logo | Click on LEAP logo | On page display | Redirected to display page | redirected to display page with all books displayed by order title | | Omega Tech | 3/5/2015 |
| 26 | P | 1.020 | Click on Home button | Click on Home button | Click on Home button | On page display | Redirected to display page | redirected to display page with all books displayed by order title | | Omega Tech | 3/5/2015 |
| 27 | P | 1.021 | Logout | Click on Logout | Click on Logout | On page display | Redirected to login page with a successful log out message | Redirected to login page with a successful log out message | | Omega Tech | 3/5/2015 |
| 28 | P | = Unit Summary | | 100% passing | | 21 passed | | | Date of last test = | | 3/5/15 |
| 29 | | 21 tests | | | | 0 failed | | | | | |

Sprint Test Results IE

| | | | | | | | | | | | |
|----|---|----------------|---|---|----------------------|-----------------|--|--|--|---------------------|----------|
| 23 | F | 1.017 | Check out to Gale Virtual Reference library | click on checkout on a book by Gale Virtual Reference Library | Click on checkout | On page display | On page checkout of the desired e-book on Gale Virtual Reference Library website | Logs the user into Gale Virtual Reference and displays that page | Change IE security settings to low and it will work. | Omega Tech | 3/5/2015 |
| 24 | F | 1.018 | Check out to Rosen Learning Center | click on checkout on a book by Rosen Learning Center | Click on checkout | On page display | On page checkout of the desired e-book on Rosen Learning Center website | Displays Rosen Learning Center's log in page | Change IE security settings to low and it will work. | Omega Tech | 3/5/2015 |
| 25 | P | 1.019 | Click on LEAP logo | Click on LEAP logo | Click on LEAP logo | On page display | Redirected to display page | redirected to display page with all books displayed by order title | | Omega Tech | 3/5/2015 |
| 26 | P | 1.020 | Click on Home button | Click on Home button | Click on Home button | On page display | Redirected to display page | redirected to display page with all books displayed by order title | | Omega Tech | 3/5/2015 |
| 27 | P | 1.021 | Logout | Click on Logout | Click on Logout | On page display | Redirected to login page with a successful log out message | Redirected to login page with a successful log out message | | Omega Tech | 3/5/2015 |
| 28 | F | = Unit Summary | | 90% passing | | 19 passed | | | | Date of last test = | |
| 29 | | 21 | tests | | | 2 failed | | | | | |

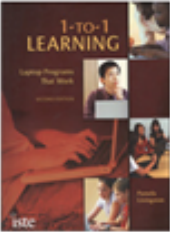

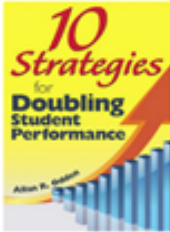
Demo

Future Sprints

- **Sprint 4** – Display and Checkout
 - Gale
 - Overdrive
 - Update database e-book information
- **Sprint 5** – Modify Accounts and Reset password
- **Sprint 6** – Statistics

Questions



| 1 to 1 Learning | 10 Best Teaching Practices | 10 Strategies for Doubling Student Performance |
|---|--|---|
|  |  |  |
| Author: Livingston | Author: Tileston | Author: Odden |
| ISBN: 978-1-56484-254-1 | ISBN: 978-1-4129-7393-9 | ISBN: 978-1-4129-7147-8 |
| Subject: Education | Subject: Education | Subject: Education |
| Description: ⓘ | Description: ⓘ | Description: ⓘ |
| Checkout 📖 | Checkout 📖 | Checkout 📖 |

421 Results Order By **Title** ▾ Reverse? Search Search By **All** ▾ [Clear Filters](#)

101 Best V... in

421 Results Order By **Title** ▾

- Title
- Author
- Subject
- ISBN

Strategies for... m, Grades

Search By **All** ▾

- All
- Title
- Author
- Subject
- ISBN
- Description

1 to 1 Learning




Author: Livingston

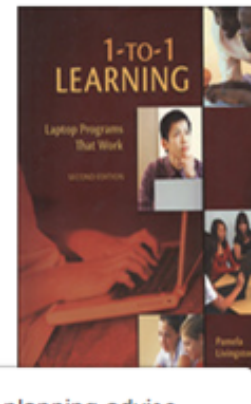
ISBN: 978-1-56484-254-1

Subject: Education

Description: ⓘ

Checkout 

1 to 1 Learning



Provides practical planning advice, case studies of successful programs, and numerous implementation resources. Also covers 1-to-1 leadership, tablet PCs, and the shift toward learner-centric educational environments.

Description: ⓘ

Checkout 