

Lightweight E-book Access Platform

LEAP



12/2/2014

Agenda

Introduction

Problem Definition

Project Progression

Sprint 1

UML Diagrams and Website Map

Data Flow Diagrams

Requirements

Data Dictionary and ER Diagrams

Test Results

Demo and Questions

Welcome

- Clients
 - Jen Cannell

Introduction

- Amar Mian - Team Leader
- Garrett Allen - Lead Programmer
- Damian Crisafulli - Webmaster
- Josh McDonald - Database Administrator
- Justin Rousseau - Web Developer

Agenda

Introduction

Problem Definition

Project Progression

Sprint 1

UML Diagrams and Website Map

Data Flow Diagrams

Requirements

Data Dictionary and ER Diagrams

Test Results

Demo and Questions

Problem Definition

- No central point of access
- Difficult for students to remember login information
- Inconsistent interfaces

Agenda

Introduction

Problem Definition

Project Progression

Sprint 1

UML Diagrams and Website Map

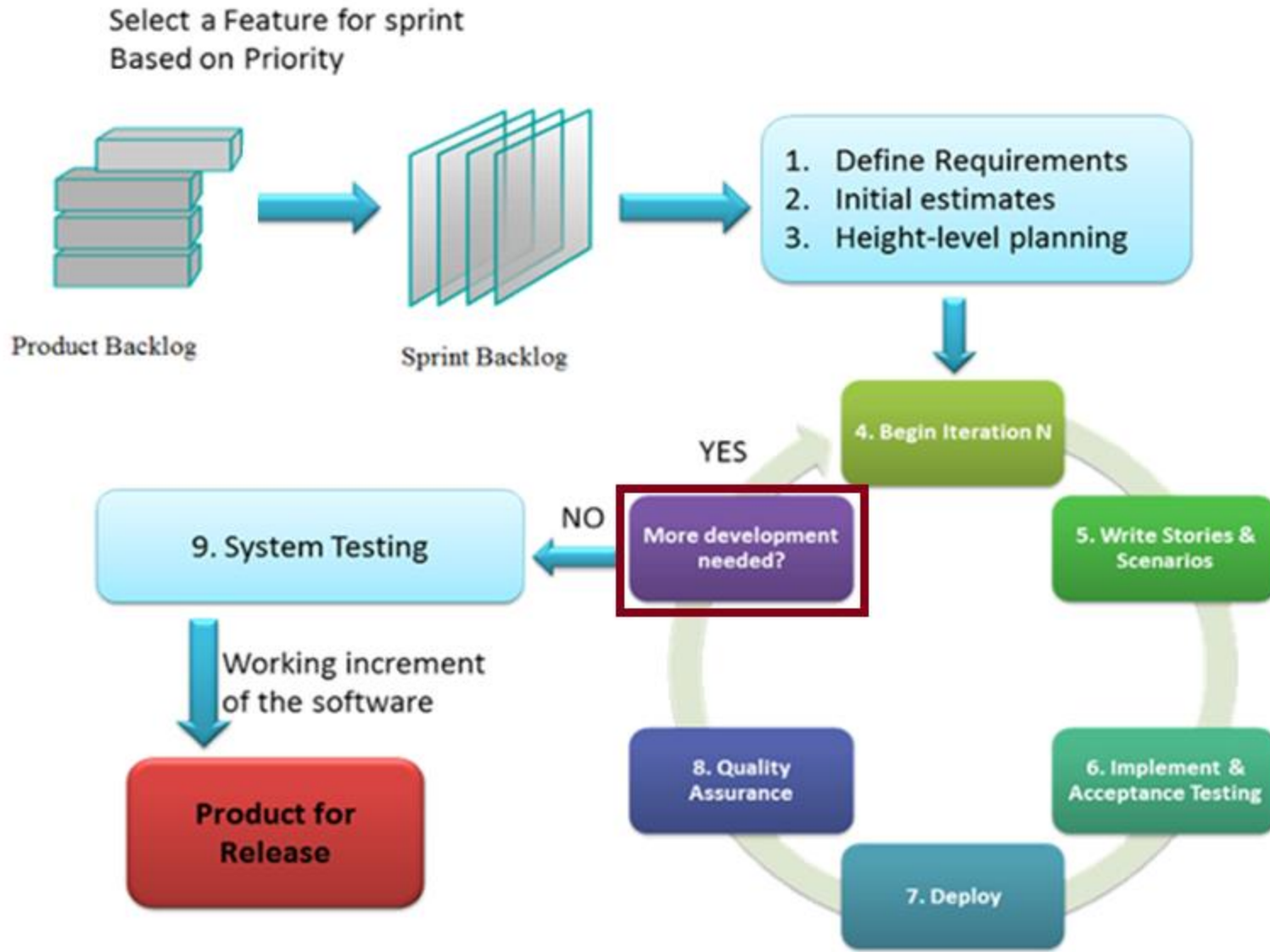
Data Flow Diagrams

Requirements

Data Dictionary and ER Diagrams

Test Results

Demo and Questions



Agenda

Introduction

Problem Definition

Project Progression

Sprint 1

UML Diagrams and Website Map

Data Flow Diagrams

Requirements

Data Dictionary and ER Diagrams

Test Results

Demo and Questions

Sprint 1

- Log in

Agenda

Introduction

Problem Definition

Project Progression

Sprint 1

UML Diagrams and Website Map

Data Flow Diagrams

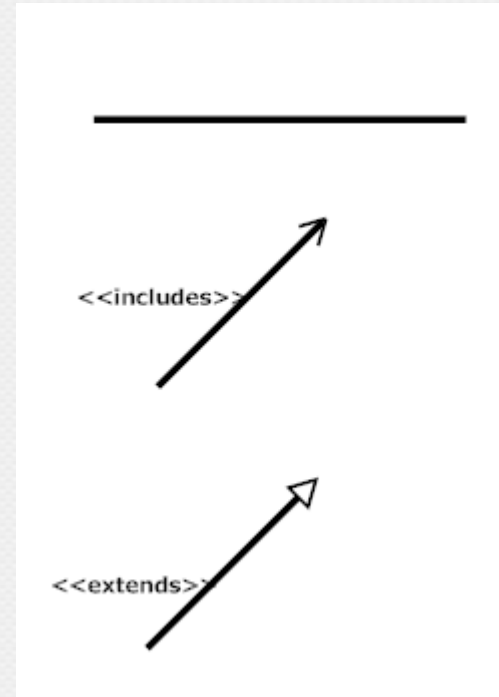
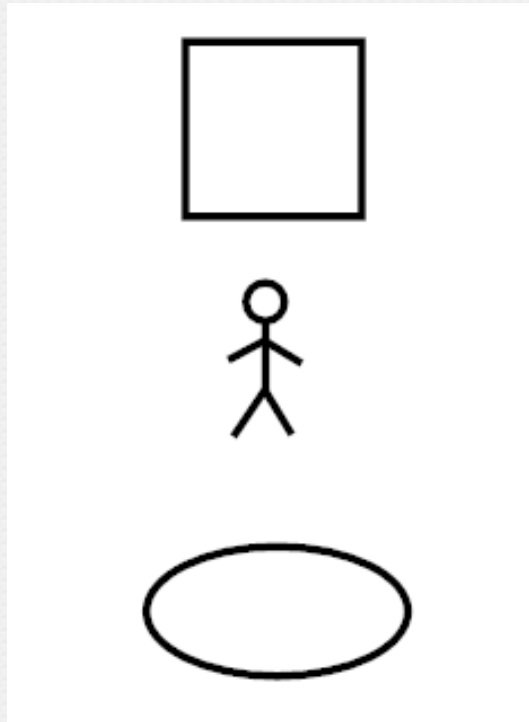
Requirements

Data Dictionary and ER Diagrams

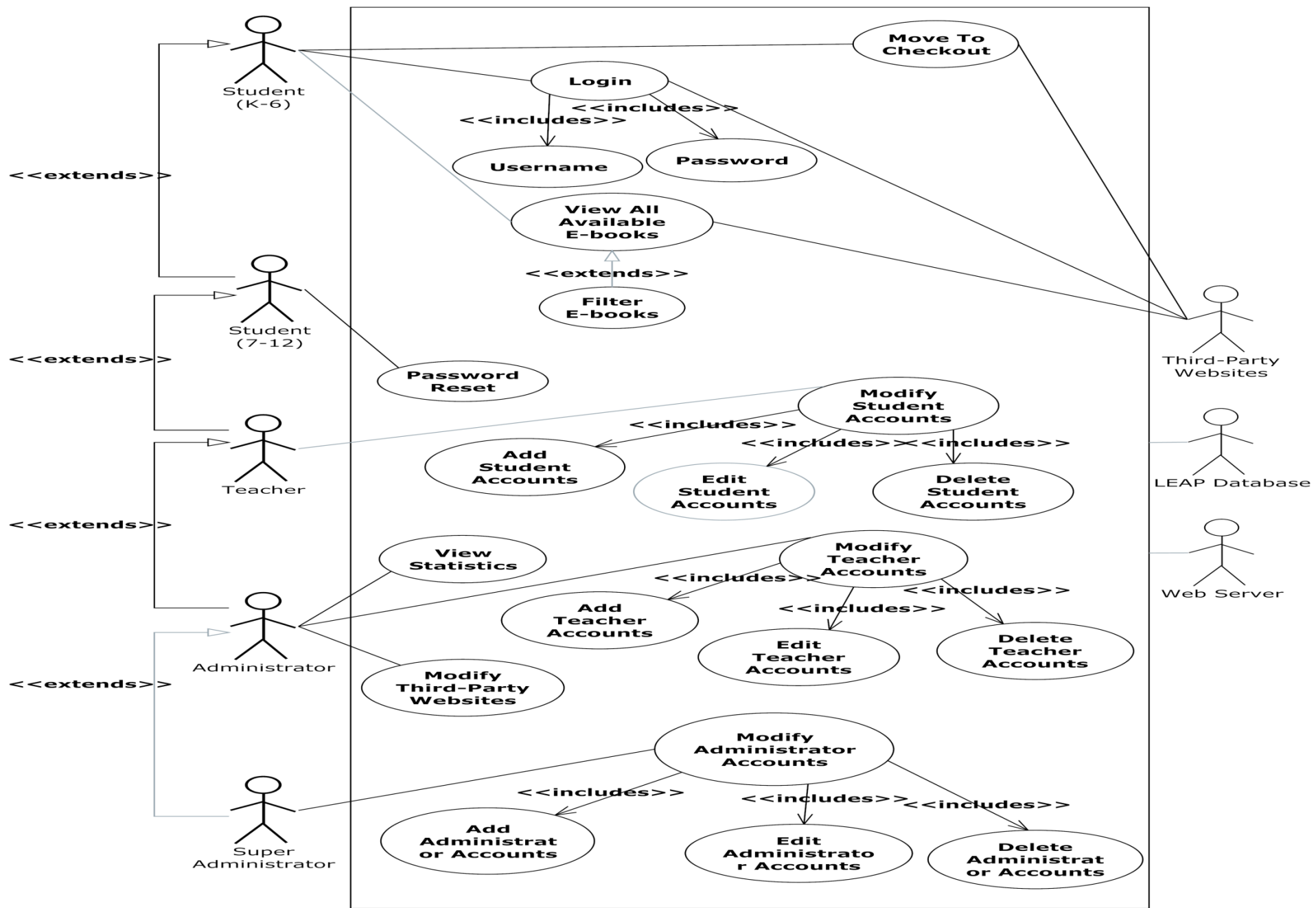
Test Results

Demo and Questions

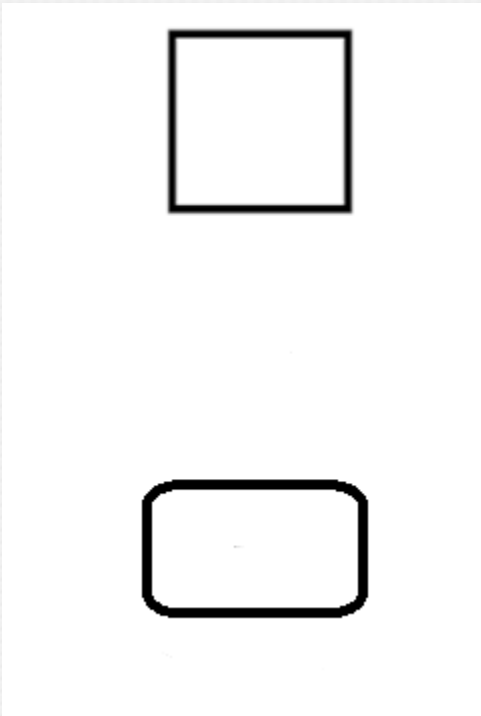
UML Use Case Diagram Legend



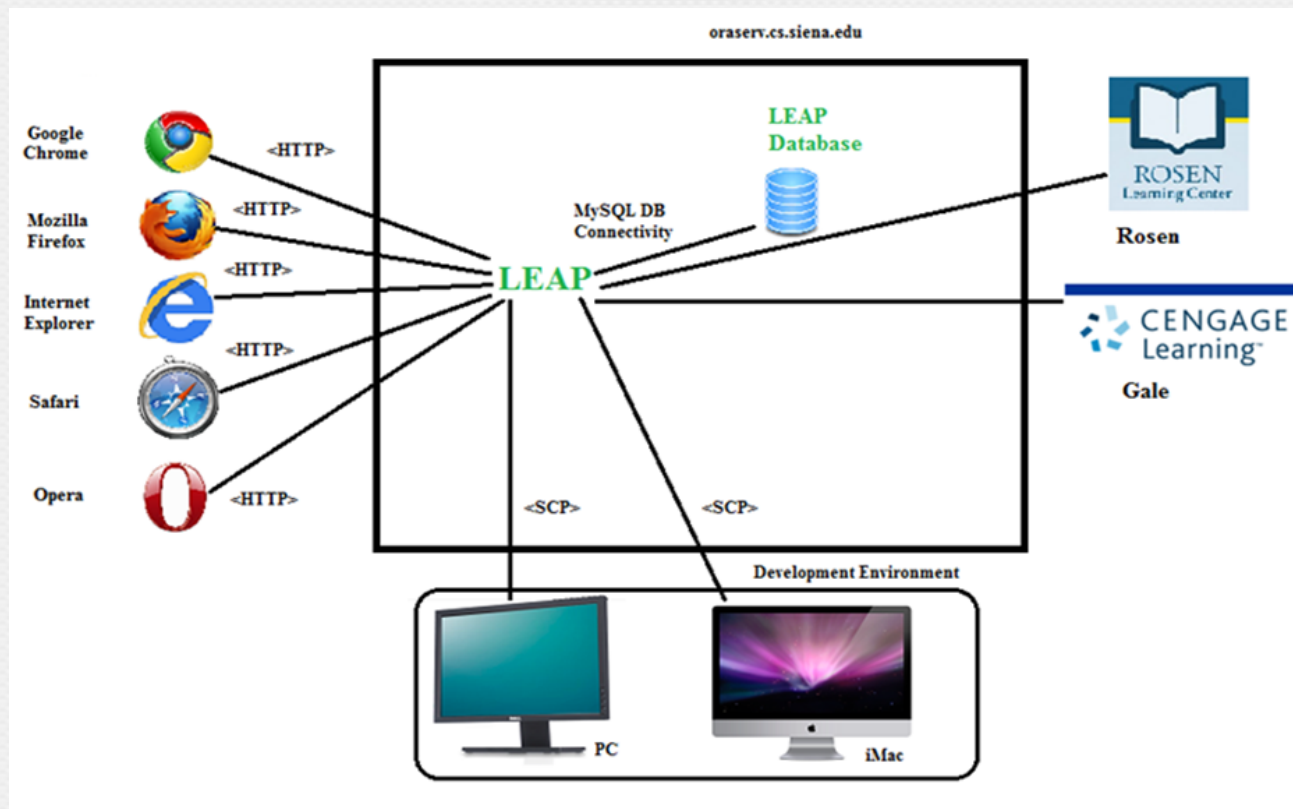
LEAP



UML Deployment Diagram Legend



Deployment Diagram Legend



Activity Diagram Legend



Initial Node - The initial node is the first node in the process. The initial node is the starting point for all movement.



Final Node - The final node is the last node in the process. When the activity flow has reached here, the process is over. There may be more than one final node.



Activity Node - Describes behaviors that will take place at this step, where activity is the behavior.

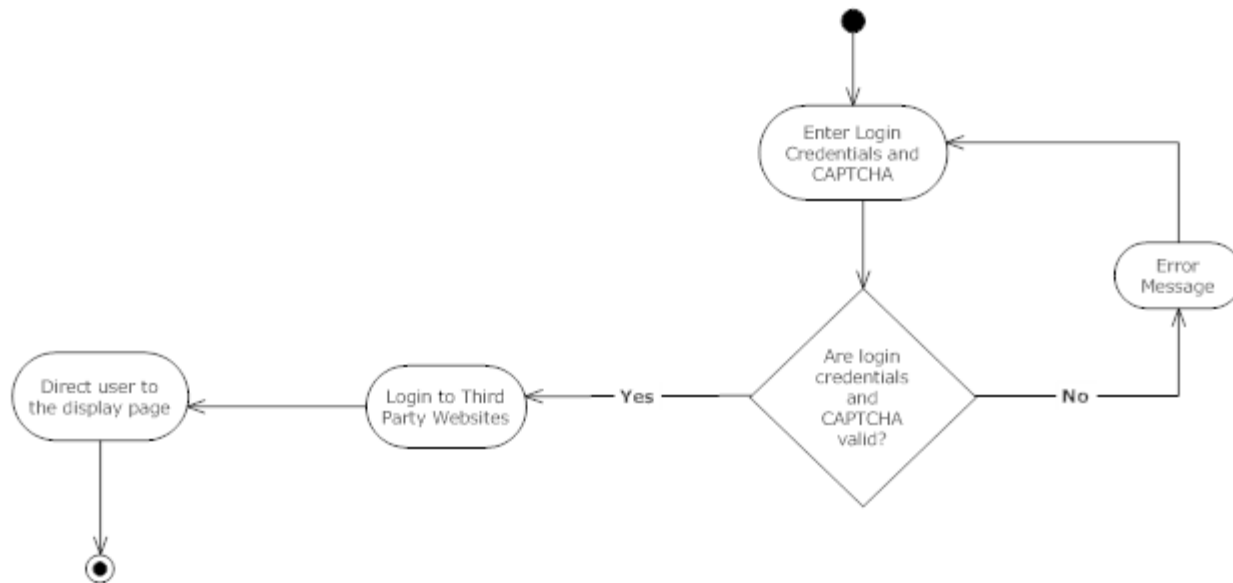


Decision Node - Takes an incoming edge and presents multiple outgoing edges based on the decision of the process. The decision is typically posed as a question.



Flow - Shows the movement of action from one node to another.

Activity Diagram



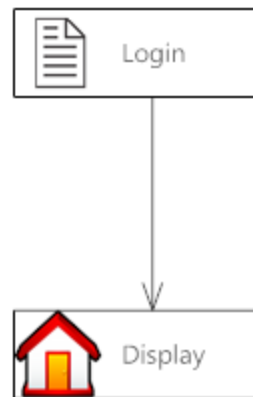
Website Map



Home - Represents the main page the user will see upon a successful login.



Form – Represents data fields which require user input.



Agenda

Introduction

Problem Definition

Project Progression

Sprint 1

UML Diagrams and Website Map

Data Flow Diagrams

Requirements

Data Dictionary and ER Diagrams

Test Results

Demo and Questions

Data Flow Legend



External entity: Contributes data or information to the system or which receive data from it.



Process: Transforms or manipulates data



Data Store: Location where data is held temporarily or permanently.



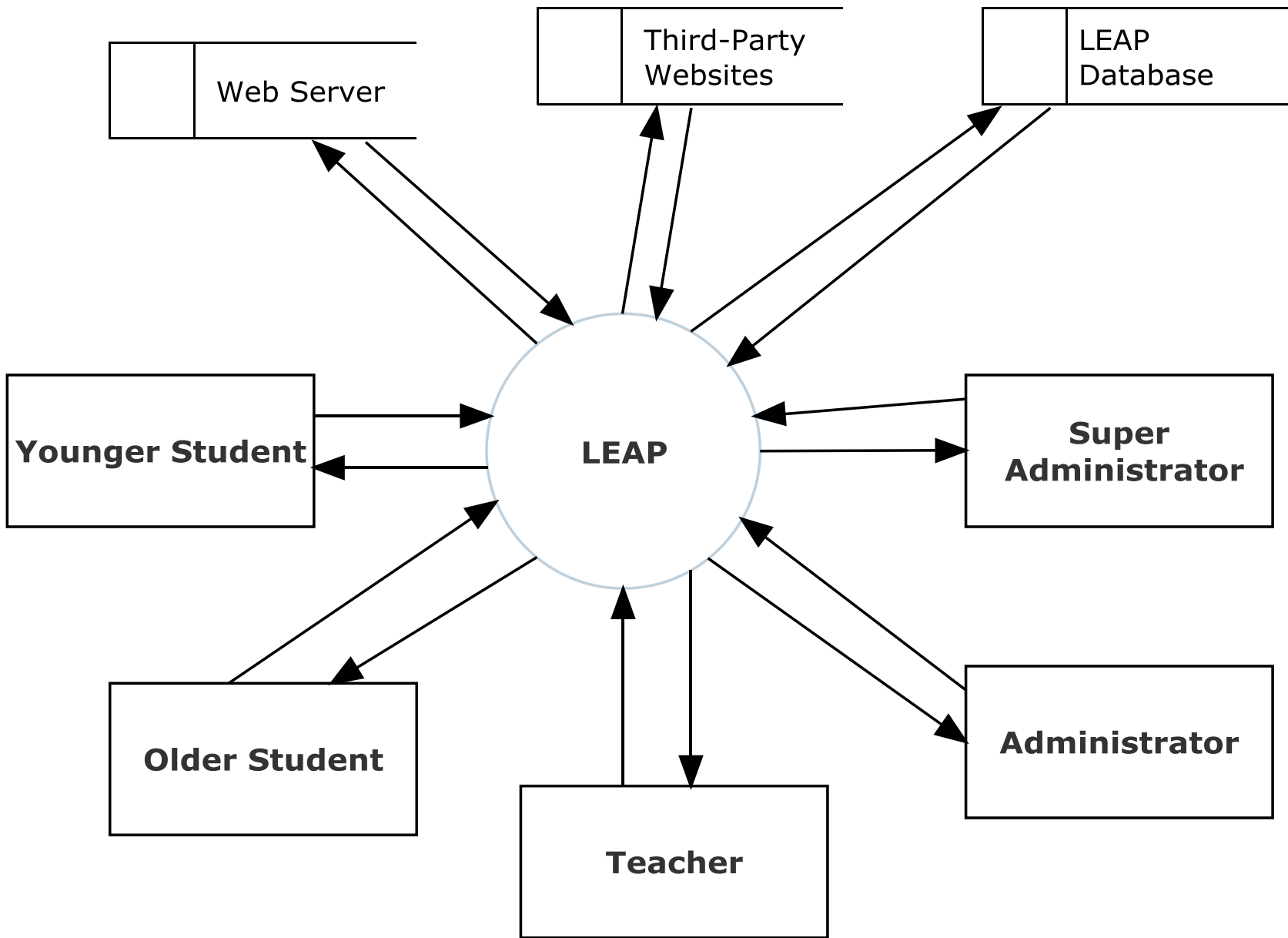
Data Flow: Data flowing to or from a process where X is the data.

Data Flow Diagrams

Context Diagram

Level 0

Level 1: Login In

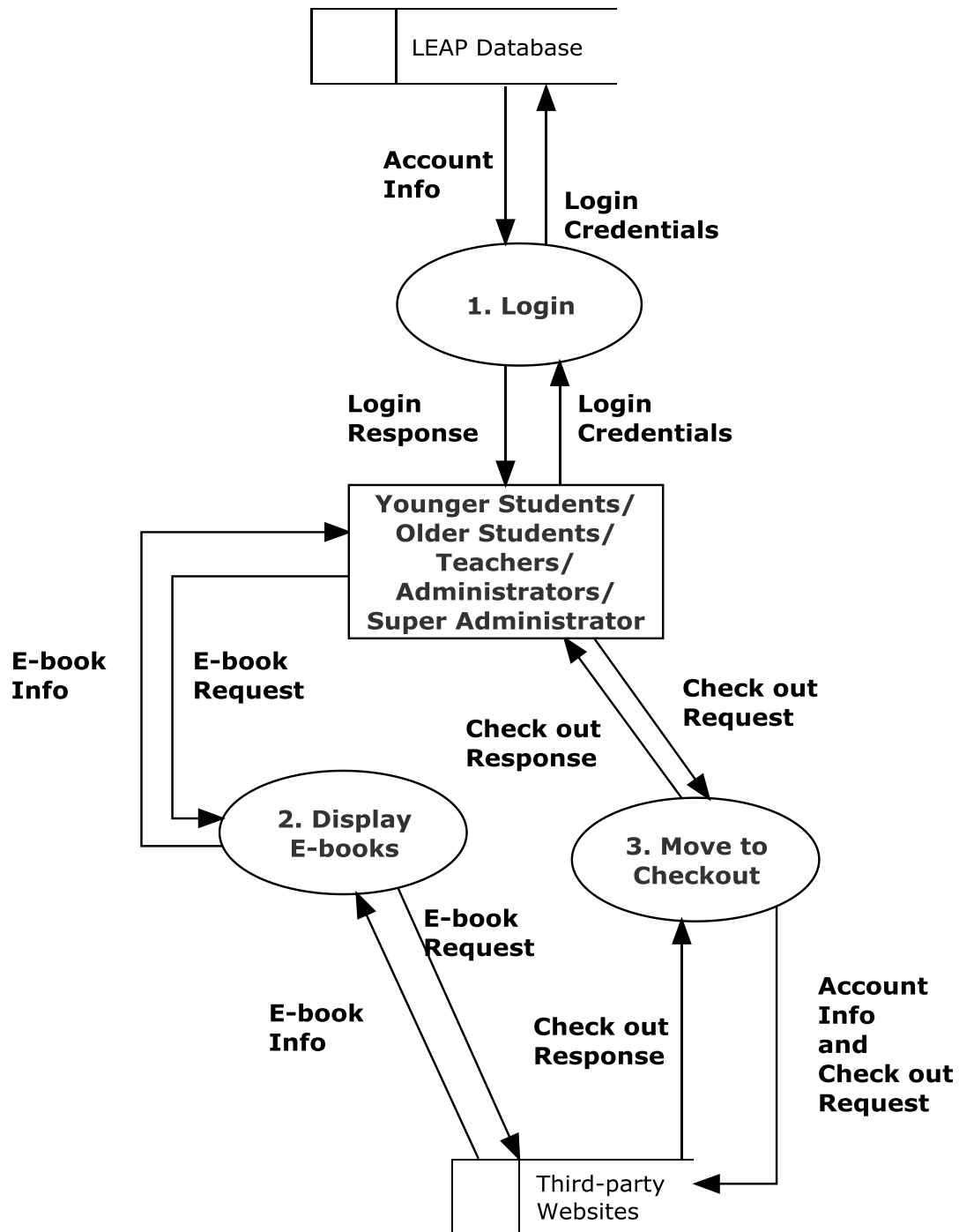


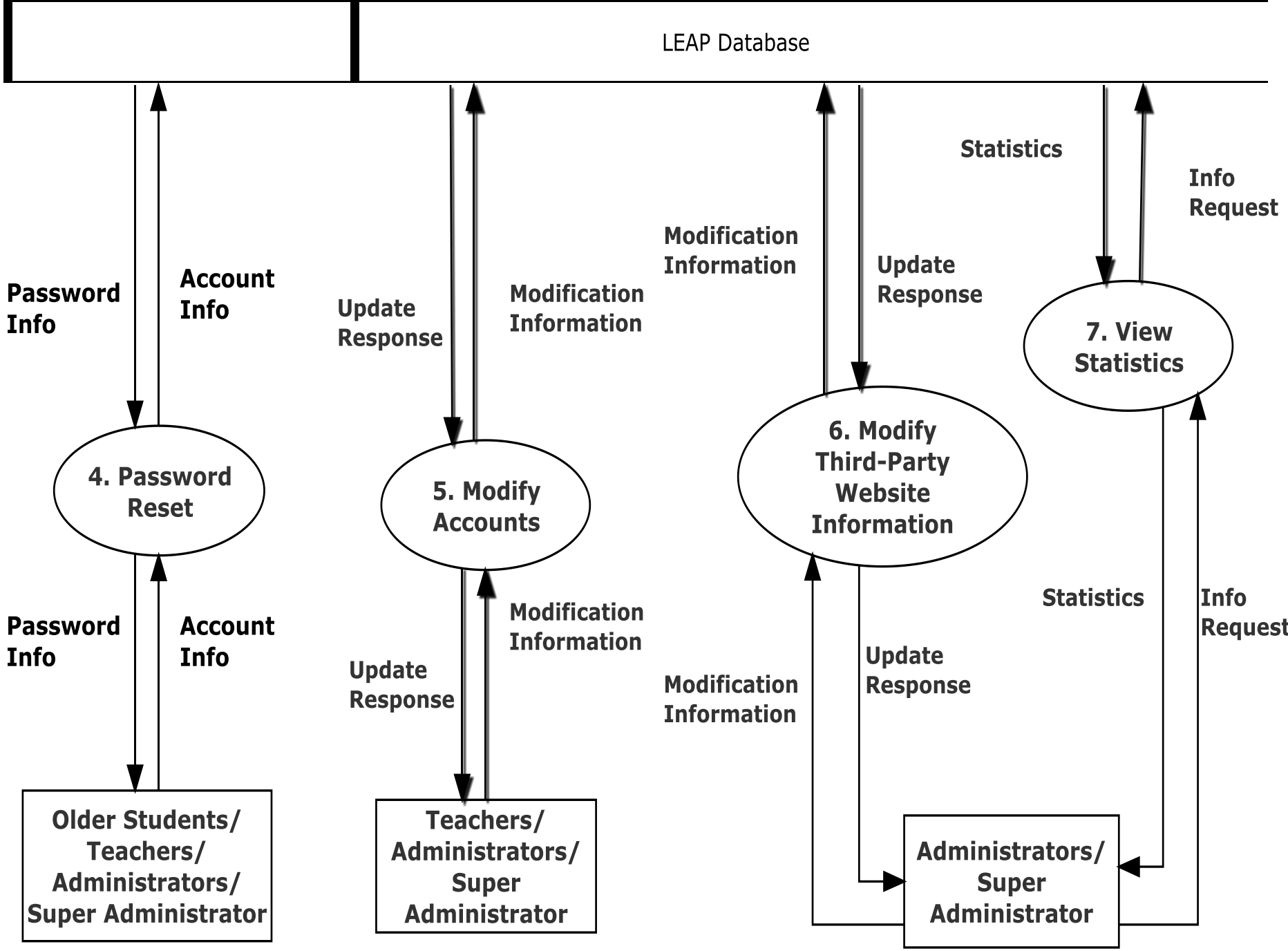
Data Flow Diagrams

Context Diagram

Level 0

Level 1: Login In



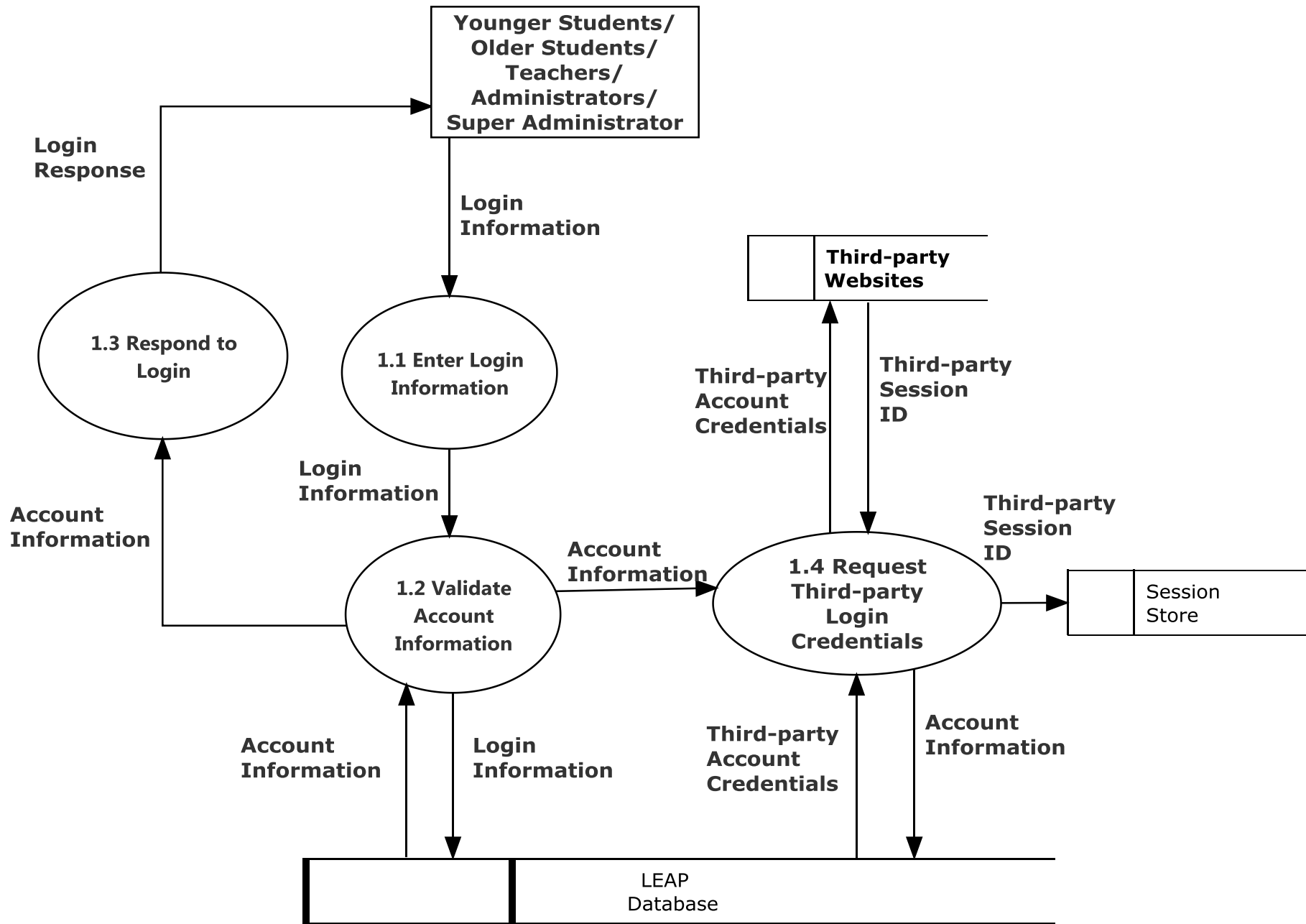


Data Flow Diagrams

Context Diagram

Level 0

Level 1: Login In



Agenda

Introduction

Problem Definition

Project Progression

Sprint 1

UML Diagrams and Website Map

Data Flow Diagrams

Requirements

Data Dictionary and ER Diagrams

Test Results

Demo and Questions

Functional Requirements

- Log in
- Display E-books
- Move to Check out
- Reset Password
- Modify Accounts
- Modify Third-party Websites
- View Statistics

Non-Functional Requirements

- Efficient
- User-friendly
- Compatible with Multiple Browsers
- Compatible with Mobile Devices
- Secure

Agenda

Introduction

Problem Definition

Project Progression

Sprint 1

UML Diagrams and Website Map

Data Flow Diagrams

Requirements

Data Dictionary and ER Diagrams

Test Results

Demo and Questions

Data Dictionary

Data Name	Data Type	Data Type Size	Description	Applicable to	Acceptable Input	Example	Comments
userName	Varchar	5-32 characters?	Username of member	log in	letters, numbers, and some special characters	Justin2good	
password	char	64 characters	password of member	log in	letters, numbers, and some special characters	2a3d2263156632 71bc93c5008e5129 faed75be1c1ae907 f820a50356577ccc86	
userID	int	1-32 bits	Unique id of member	Look up	Int	1	userID one is super Admin
Role	tiny int	8 bits	Member role (younger Student)	Identify privileges	Int	2	1= Younger Student 2= Older Student 3= Teacher 4= Admin
e-mail	Varchar	7-64 characters or null	e-mail of user	reseting password	Uppercase and lowercase English letters (a-z, A-Z) Digits 0 to 9 Characters !#\$%&'*+,-/=/?^_`{ }~	j2good@yopmail.com	Character . (dot, period, full stop) provided that it is not the first or last character, and provided also that it does not appear two or more times consecutively.

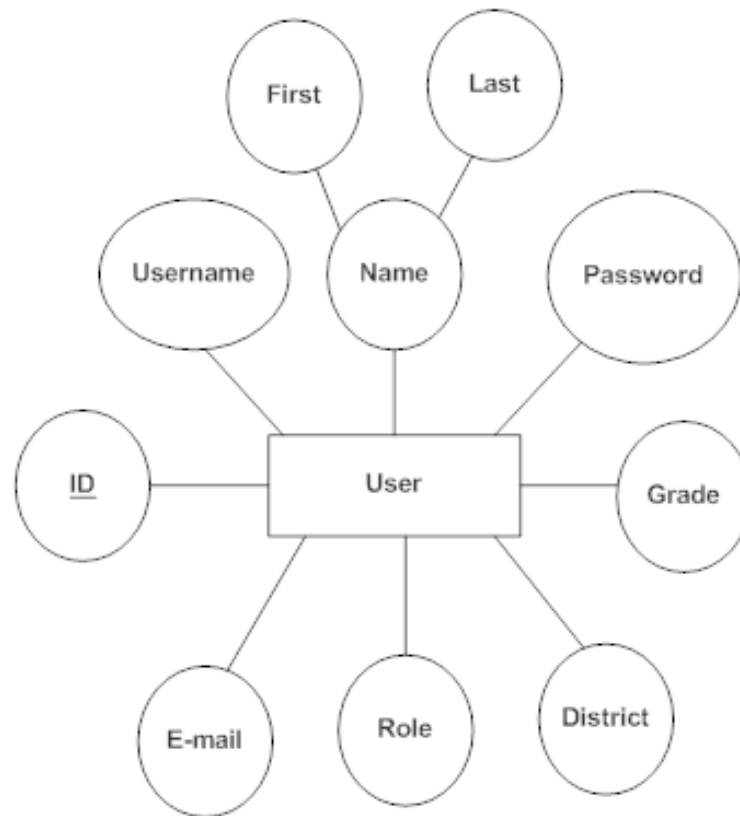
Data Dictionary

First Name	varchar	1-30 characters?	First name of member	Add users to system	ASCII char 32 (space), -, A-Z, a-z, ', ` , ASCII char 128 to ASCII char 165	Justin	
Last Name	varchar	1-60 characters?	Last name of member	Add users to system	ASCII char 32 (space), -, A-Z, a-z, ', ` , ASCII char 128 to ASCII char 165	Rousseau	
District	varchar	1-32 characters?	School District	log in/ e-book access	Letters, space, and some special characters	South Colonie	looking into local districts
Grade	tiny int	8 bits	Grade level	identify role	null, 0-12	0	0 is Kindergarten, null is not student

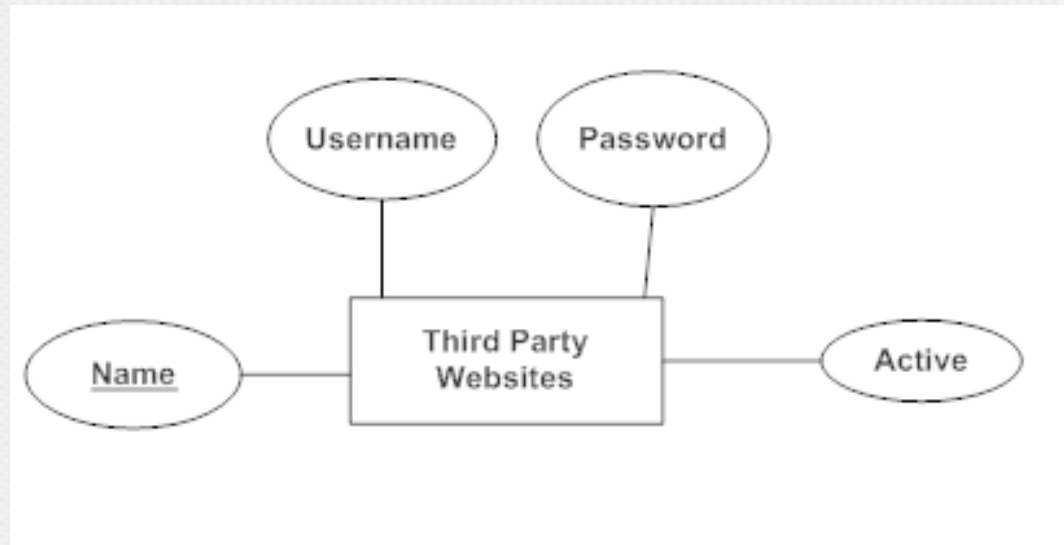
Data Dictionary

Data Name	Data Type	Data Type Size	Description	Applicable to	Acceptable Input	Example	Comments
Third party website name	varchar	1-32 characters?	third party website name	identify third party	letters and space	Rosen	looking into third party websites
Third party username	varchar	1-32 characters?	third party user name	login into third party	letters, numbers, and special characters	justin2bad	
Third party password	varchar	128 characters	third party password	login into third party	letters, numbers, and special characters	hahalamaDmIn	
Active	bit	1 bit	1 for in use 0 for not	log in to third party websites/ login process	1 or 0	1	

ER Diagram: Users



ER Diagram: Third Party Websites



Agenda

Introduction

Problem Definition

Project Progression

Sprint 1

UML Diagrams and Website Map

Data Flow Diagrams

Requirements

Data Dictionary and ER Diagrams

Test Results

Demo and Questions

Sprint 1 Test Results

Test Cases										
Pass/Fail Status	Test Number	Description	Action to perform test (input)	Steps to be Executed	State Before Test	Expected result	Observed result	Comments	Tested By	Test Date
P	1.001	Null everything	Leave everything Blank.	Press submit.	Empty Form.	Fill out username, password, and captcha	The user is notified that username, password, and CAPTCHA are all required.		Omega Tech	11/24/2014
P	1.002	Null Username Field	Leave username field blank.	Fill out the password, captcha and submit.	Empty Form.	Displays message "Please fill out username Field"	The user is notified that a username is required.		Omega Tech	11/24/14
P	1.003	Null Password Field	Leave password field blank.	Fill out the username, captcha and submit.	Empty Form.	Displays message "Please fill out password field"	The user is notified that their password is required.		Omega Tech	11/24/14
P	1.004	Null Username and Password Fields	Leave username and password field blank	Fill out captcha. Press submit.	Empty Form.	Diplays message "please fill out username Field."	The user is notified that their username and password is required.		Omega Tech	11/24/14
P	1.005	Incorrect Password for given username.	Input incorrect Username and password combination. But correct captcha	Press submit.	Empty Form.	Displays message: Password does not match username.:	An error message is displayed at the top of the screen stating that password is incorrect.		Omega Tech	11/24/14

Sprint 1 Test Results

P	1.006	Non-existing username.	Input a username which does not exist.	Fill out an incorrect username and a password.	Empty Form.	Displays message: "Username does not exist, Contact your teacher."	An error message is displayed at the top of the screen stating that the username does not exist.	Omega Tech	11/24/14
P	1.007	Correct Username and Password	Input the correct username and password. Also correct captcha	Fill out the correct username and password.	Empty Form.	No Error. Redirected to home page	The user is redirected to the home page.	Omega Tech	11/24/14
P	1.008	Username length less than 5 characters.	Input a username less than 5 characters.	Fill out the correct password and CAPTCHA and press submit.	Empty Form.	Displays message: "Username must be between 5 and 50 characters."	The user is notified that the username must be between 5 and 50 characters.	Omega Tech	11/24/14
P	1.009	Password length less than 5 characters.	Input a Password less than 5 characters.	Fill out the correct username and CAPTCHA and press submit.	Empty Form.	Displays message: "Password must be between 5 and 50 characters."	The user is notified that the Password must be between 5 and 50 characters.	Omega Tech	11/24/14
P	1.010	Null Captcha Field	Leave CAPTCHA blank	Fill out everything except captcha	Empty Form.	Displays message: "captcha is incorrect"	The user is notified that they should enter a value for the CAPTCHA	Omega Tech	11/24/14
P	1.011	Incorrect Captcha Field	Input correct username and password, with incorrect CAPTCHA	Fill out the correct CAPTCHA	Empty Form.	Displays message: "captcha is incorrect"	An error message displayed saying: "CAPTCHA message is incorrect."	Omega Tech	11/24/14
P	= Unit Summary		100% passing		11 passed		Date of last test =		11/24/14
	11 tests				0 failed				

Agenda

Introduction

Problem Definition

Project Progression

Sprint 1

UML Diagrams and Website Map

Data Flow Diagrams

Requirements

Data Dictionary and ER Diagrams

Test Results

Demo and Questions

Demo

Welcome To Leap

Username
Enter Username

Password
Password

yet [Different Image]

Enter The Letters Above

Submit Forgot Password



Board of
Educational
Services



Welcome To Leap

Username
Enter Username ✖
The Username is required

Password
Password ✖
The password is required

yet [Different Image]

Enter The Letters Above ✖
Please enter a value

Submit Forgot Password



Board of
Educational
Services



Login To Leap: OK!

IP Address : :1

User Agent: Mozilla/5.0 (Windows NT 6.1; WOW64) AppleWebKit/537.36 (KHTML, like Gecko) Chrome/38.0.2125.111 Safari/537.36

Last Activity: 1416498012

Login To Rosen: OK!

Session ID: JSESSIONID=83975E411445562B1AF4F9C86668640C; Path=/

Login To Gale: OK!

Session ID: JSESSIONID=1C09D62380726490EB55D08ED6538800; omni1; Path=/auth; HttpOnly

Login To Gale Professional: OK!

Session ID: JSESSIONID=EAD2BFAEE3EA45D3359104B600E47C94; omni2; Path=/auth; HttpOnly

User Information

- User ID: 2
- Username: student
- Password(SHA256): 2ba56c017e1020e4e78000ad0f7505d1e09f4e25d0e0c78a2a7327760
- Role: Young Student
- E-Mail: student@leap.com
- First Name: Young
- Last Name: Student
- District: Questar III
- Grade: 6

Logout



Board of
Educational
Services



Questions

