



Fredrick Norton Associated Technologies™

Agenda

- Overview
- Life Cycle Model
- Data Flow
- Data Dictionary
- Constraints
- Prototype
- Summary

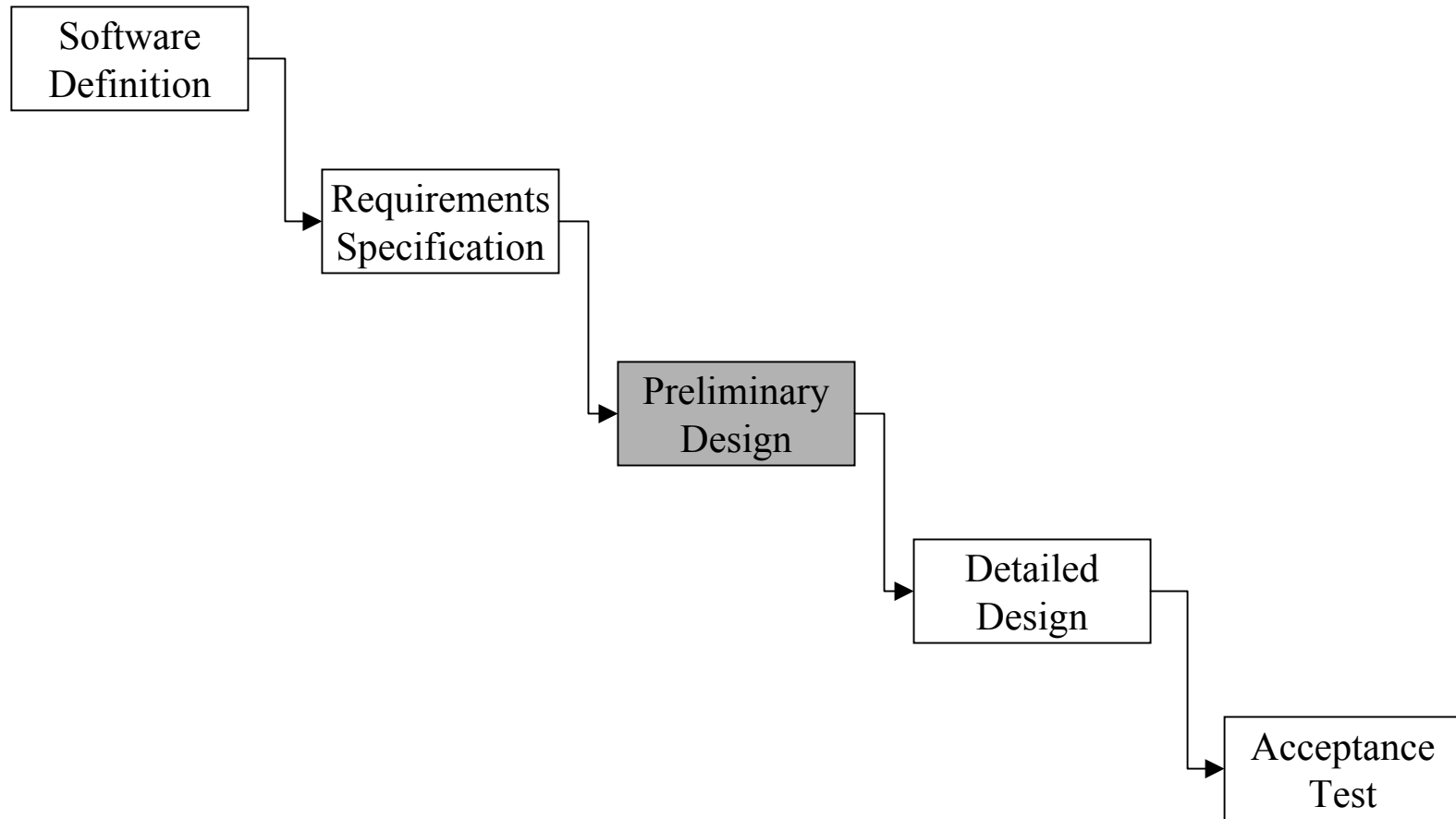


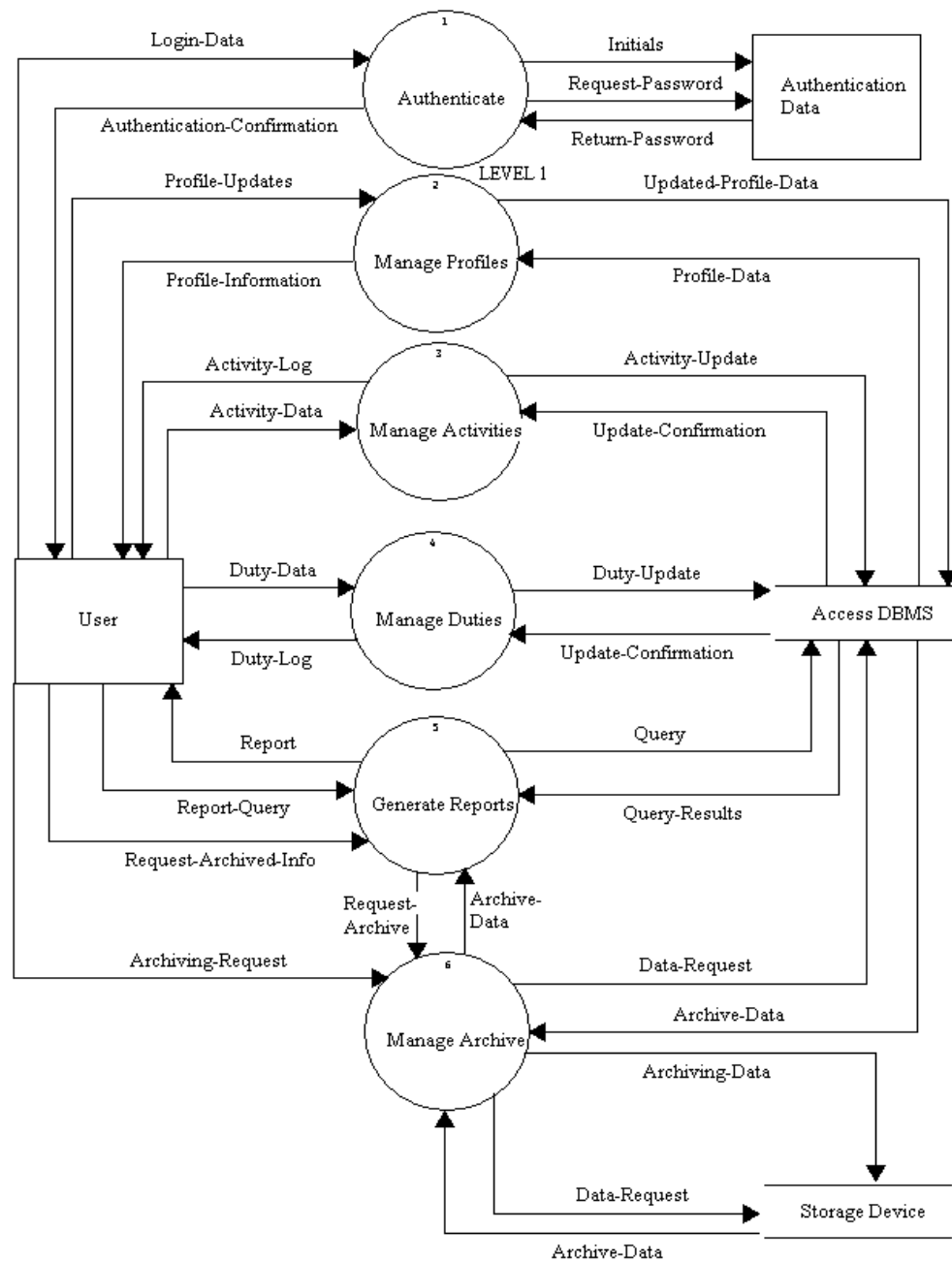
Overview



Preliminary Design

The Life Cycle Model





Preliminary Design



Data Dictionary

Generate Reports

Process

Description:

Allows the user to choose from five different query types from the database, this includes current information and archived data.

Process #: 5

Process Description:

Takes in a query or archive request from the user and returns the report from the database or storage device.

Notes:

The five types of queries are: annual report, individual summary, individual detailed, squad summary and squad detailed.

Location:

level 1 (0)

Input Flows:

Report-Query

Archive-Data

Report-Query

Query-Results

Output Flows:

Request-Archive

Query

Report

Date Last Altered: 11/24/2002 Date Created: 11/24/2002



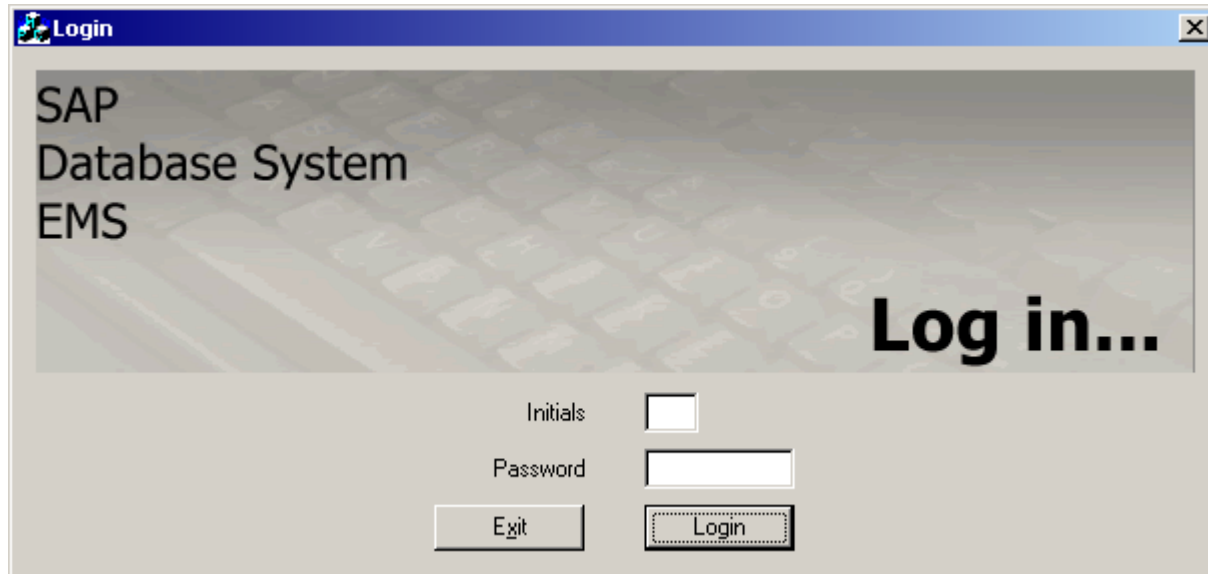
Preliminary Design

Constraints

- Authenticated Login
- Activity Form
- Redundancy
- Tour of Duty
- Reports
- Archiving



Prototype



The image shows a window titled "Login" with a close button (X) in the top right corner. The window content is as follows:

SAP
Database System
EMS

Log in...

Initials

Password



Summary

- Detailed Design Documents
 - February 24, 2003
- Detailed Design Presentation
 - February 28, 2003
- Acceptance Test Documents
 - April 14, 2003
- Acceptance Test Presentation
 - April 16, 2003

