

# Detailed Design

## Appendix B: Data Flow Diagrams Subconscious Analysis Software

**Requested by:**

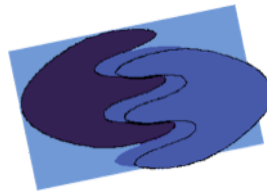
Dr. Eric Breimer

Associate Professor

Department of Computer Science

Siena College

**Delivered by:**



enigma elucidation

**Prepared By:**

Megan DeRudder

Christopher Black

Lindsay Kulzer

Amanda Kurz

Nathan Levine

Daniel West

February 16, 2012

Version 1.0



## Table of Contents

Data Flow Diagrams .....	3
1.1 Legend.....	3
1.2 Context Diagram .....	4
1.3 Level 0 Diagram.....	5
1.4 Level 1 Diagrams .....	6
1.4.1 Level 1: Manage IATs .....	6
1.4.2 Level 1: Authenticate .....	7
1.4.3 Level 1: Take IAT .....	8
1.5 Level 2 Diagrams .....	9
1.5.1 Level 2: Create IAT .....	9
1.5.2 Level 2: Take Association Test.....	10
1.5.3 Level 2: Take Survey.....	11
1.5.4 Level 2: Manage Data * .....	12
1.6 Level 3 Diagrams .....	13
1.6.1 Level 3: Create Categories .....	13
1.6.2 Level 3: Create Survey.....	14
1.6.3 Level 3: Select Test to View * .....	15
1.6.4 Level 3: Upload Stimuli .....	16

# Data Flow Diagrams

The following data flow diagrams show how data is transferred and manipulated using SAS. The diagram will show the source of the data as well as the processes that can be chosen to transfer or analyze data. The Diagrams will also show the sources of data and how that data interacts with SAS and what roles the functions play concerning the data. The following legend will explain symbols for these diagrams.

## 1.1 Legend



**Entity/Source/Sink**-People,machines,organizations, etc,which contribute data or information to the system.



**Process** - Actions that are performed by the system.



**Datastore**- Represents where data is stored on the system.



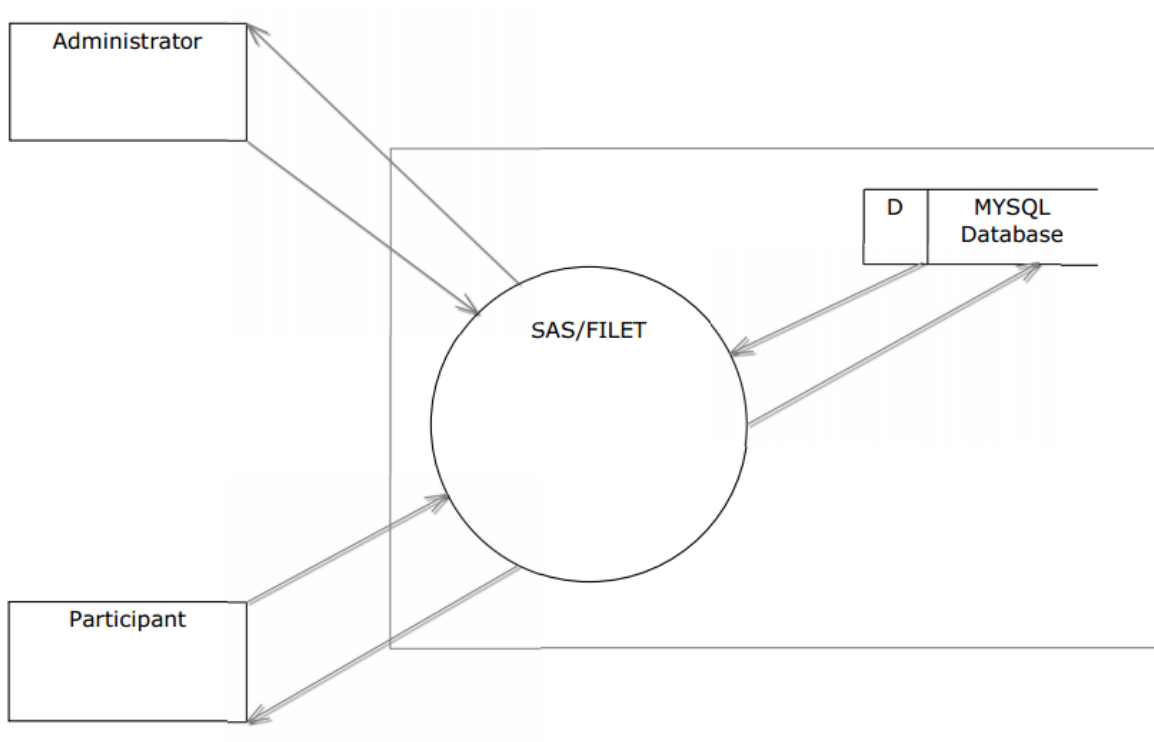
**Dataflow** - Represents the flow of data throughout the system

Dataflows, Datastores, Processes, and associated descriptive words depicted in bold or thicker lines will represent the work being completed by enigma elucidation.



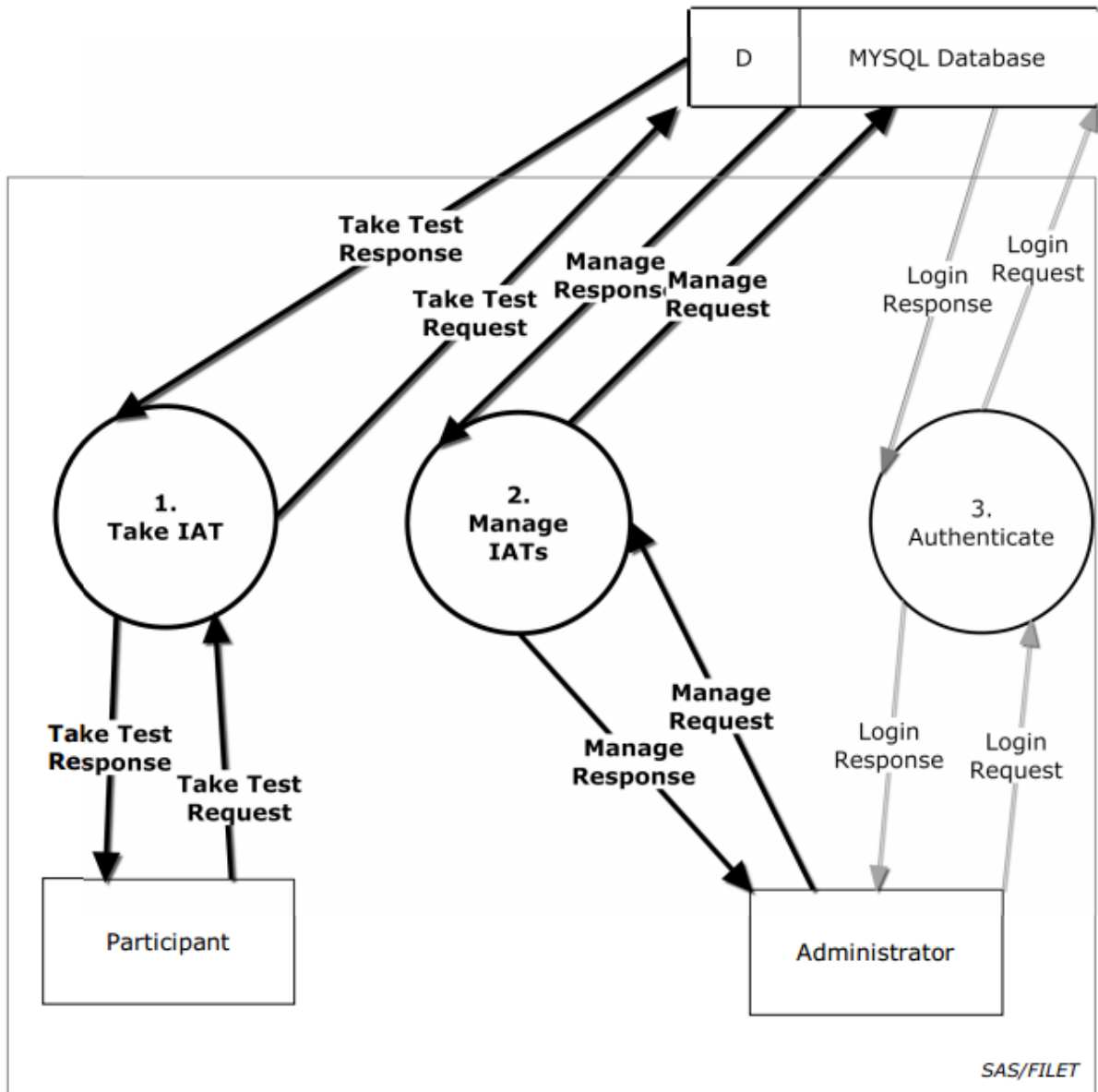
## 1.2 Context Diagram

This context diagram depicts a broad representation of the interaction between SAS exogenous and endogenous agents



### 1.3 Level 0 Diagram

This Level 0 Diagram shows the most basic processes of the system SAS. It also shows the interaction between the two users, processes, and the database.

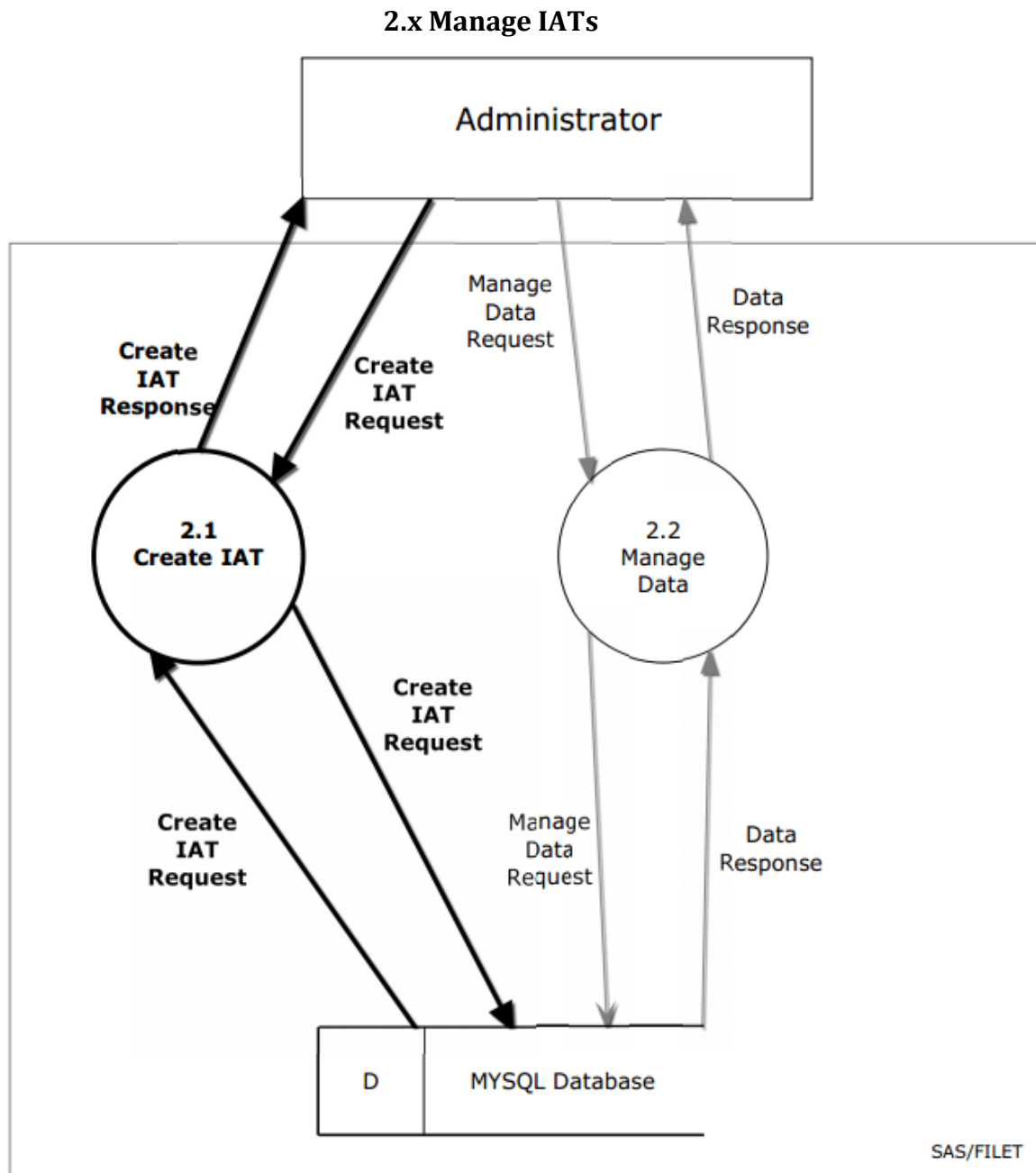




## 1.4 Level 1 Diagrams

### 1.4.1 Level 1: Manage IATs

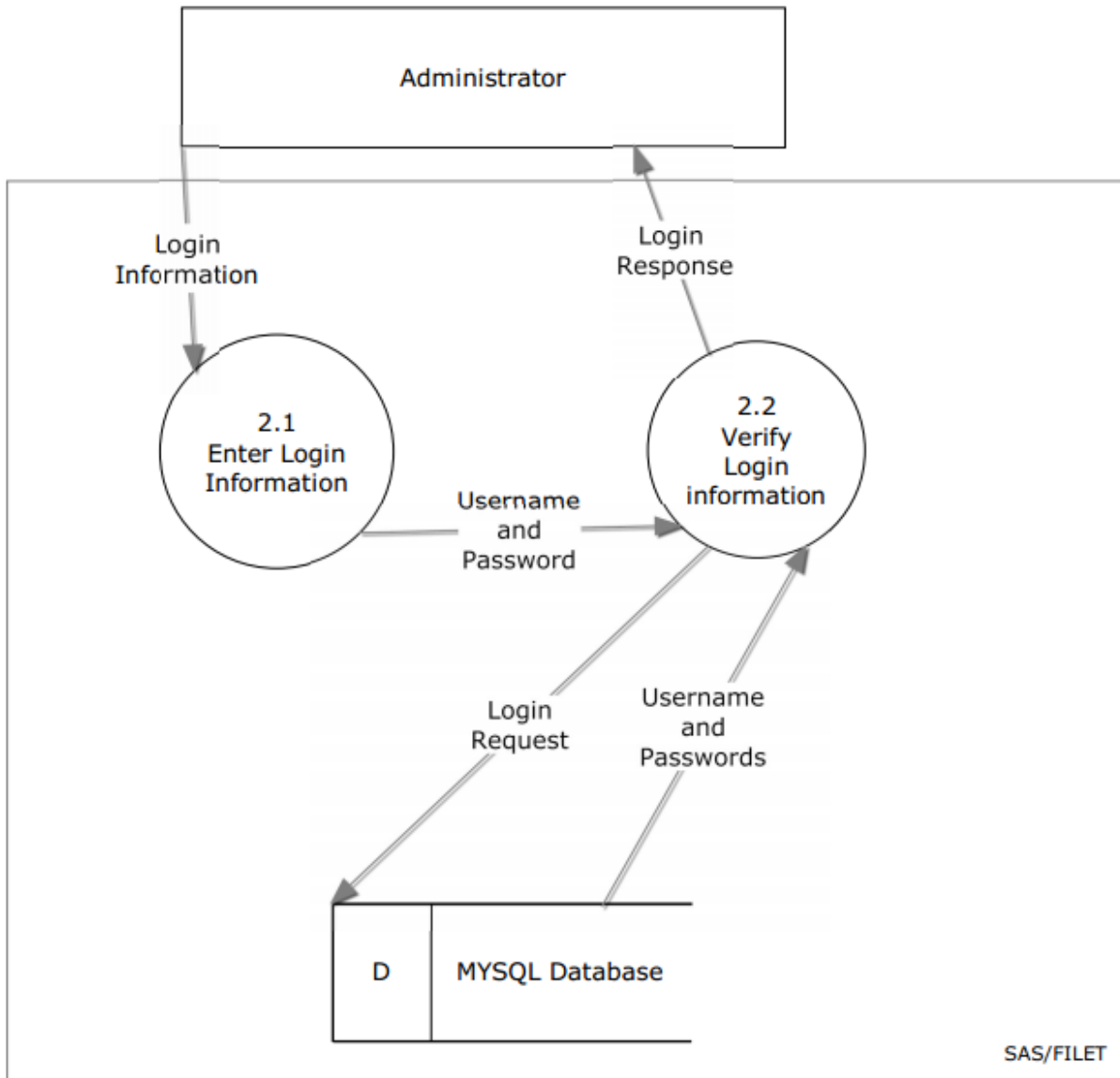
This level 1 diagram expands on the previous process Manage IAT. This diagram shows the interaction between the administrator, sub-processes of Manage IAT, and the Database.



### 1.4.2 Level 1: Authenticate

This level 1 diagram expands on the previous process Authenticate. This diagram shows the interaction between the administrator, sub-processes of Authenticate, and the Database.

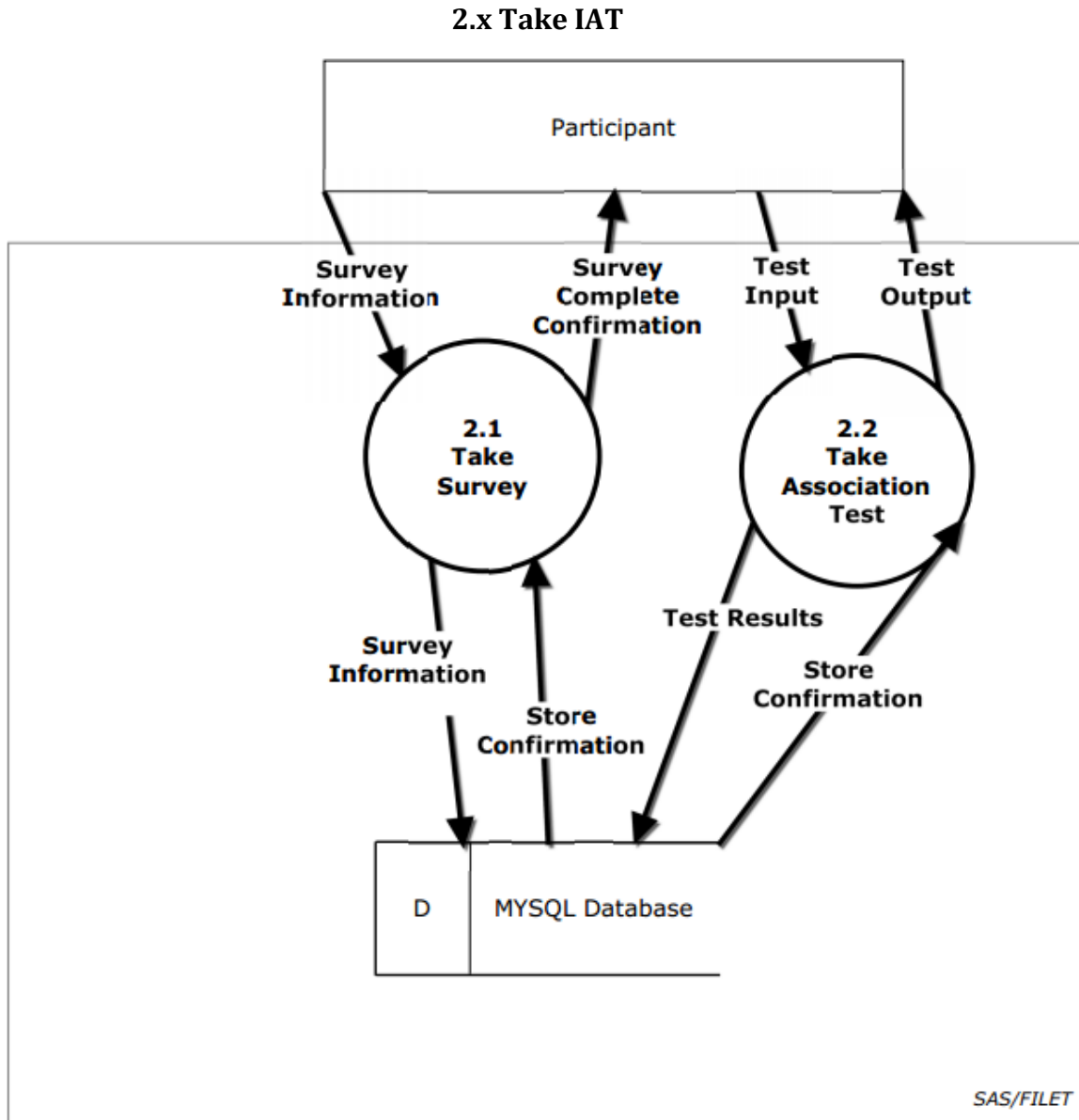
#### 2.x Authenticate





### 1.4.3 Level 1: Take IAT

This level 1 diagram expands on the previous process Take IAT. This diagram shows the interaction between the Participant, sub-processes of Take IAT, and the Database.

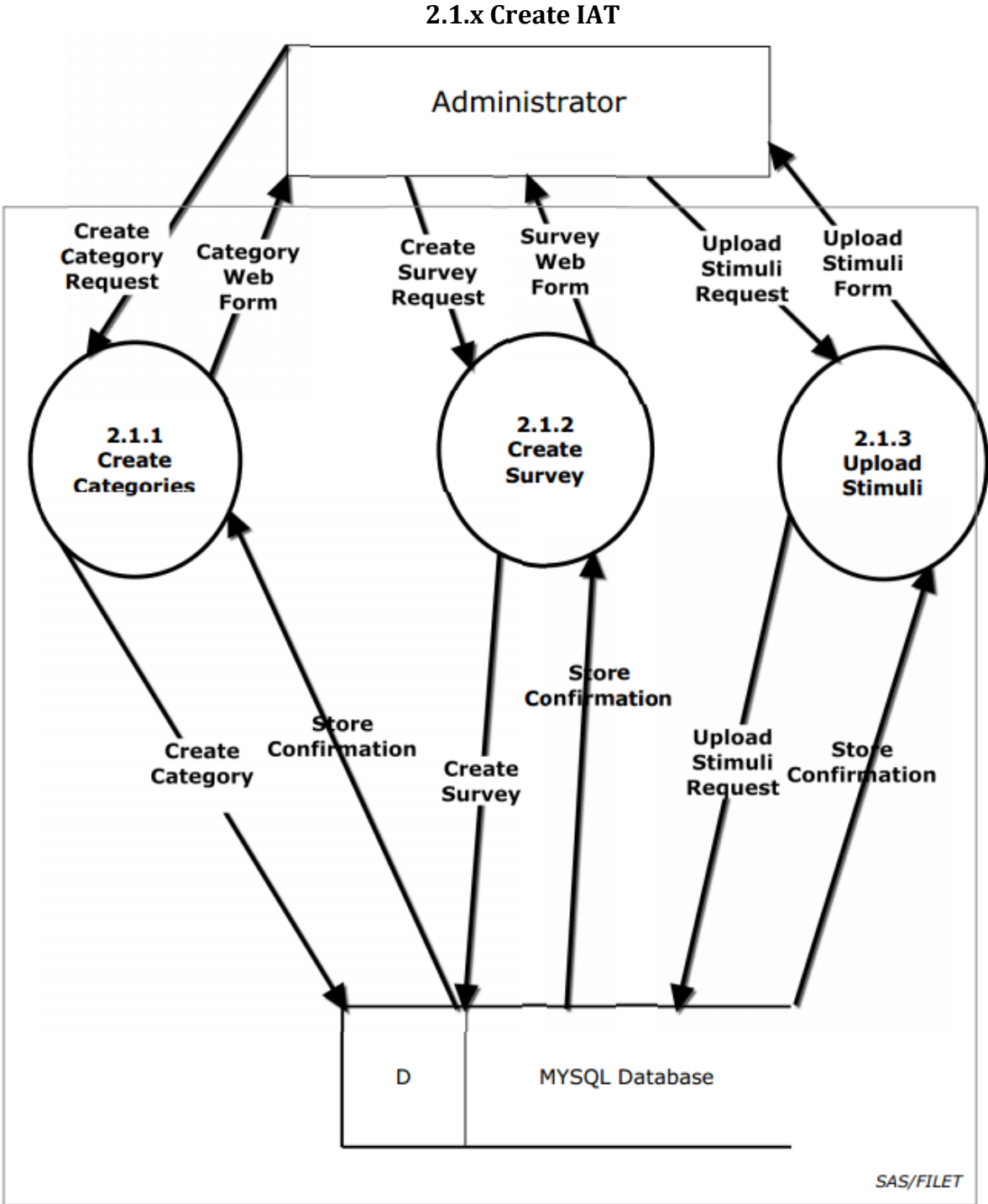




# 1.5 Level 2 Diagrams

## 1.5.1 Level 2: Create IAT

This level 2 diagram expands on the previous process Create IAT. This diagram shows the interaction between the Administrator, sub-processes of Create IAT, and the Database.

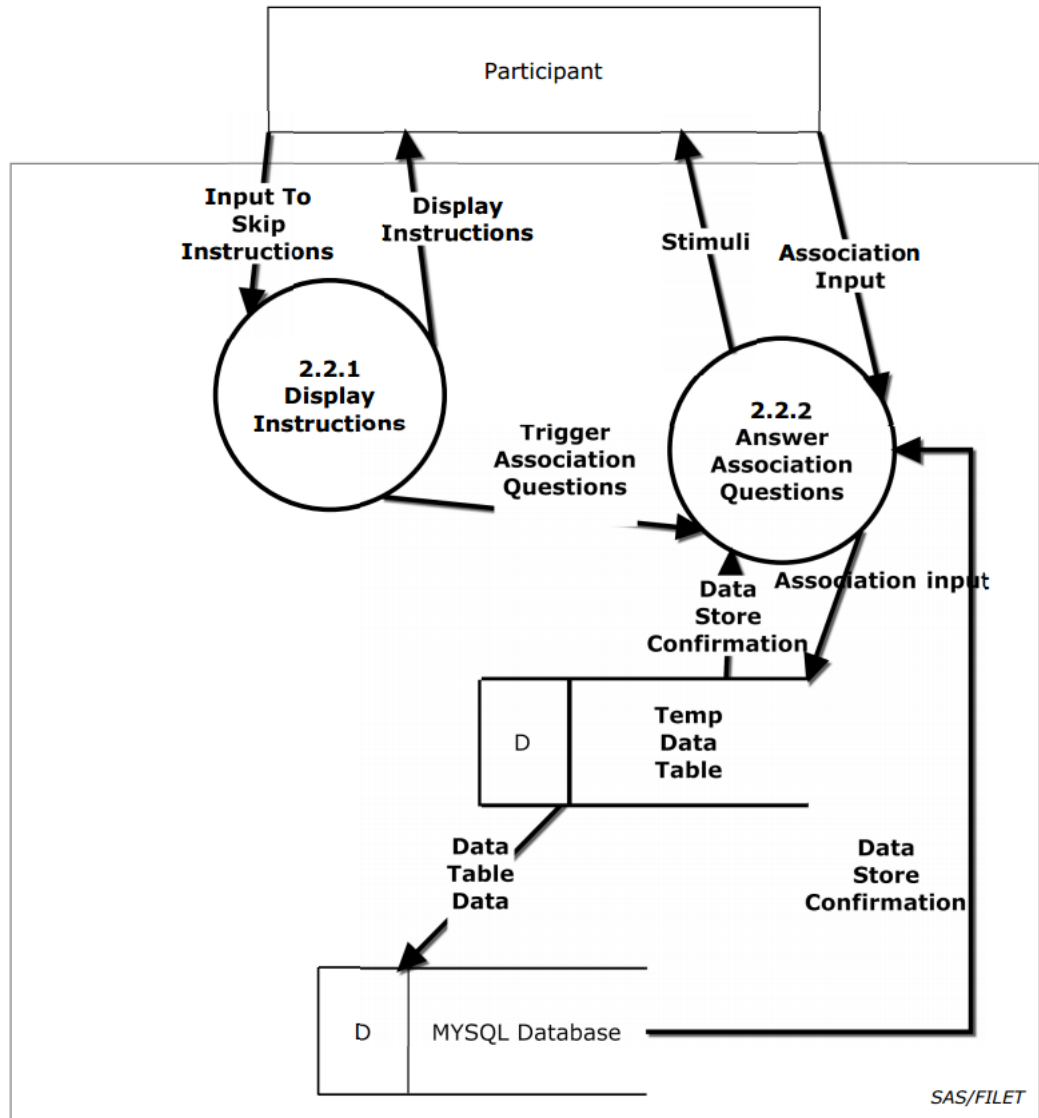




### 1.5.2 Level 2: Take Association Test

This level 2 diagram expands on the previous process Take Association Test. This diagram shows the interaction between the Participant, sub-processes of Take Survey, and the Database.

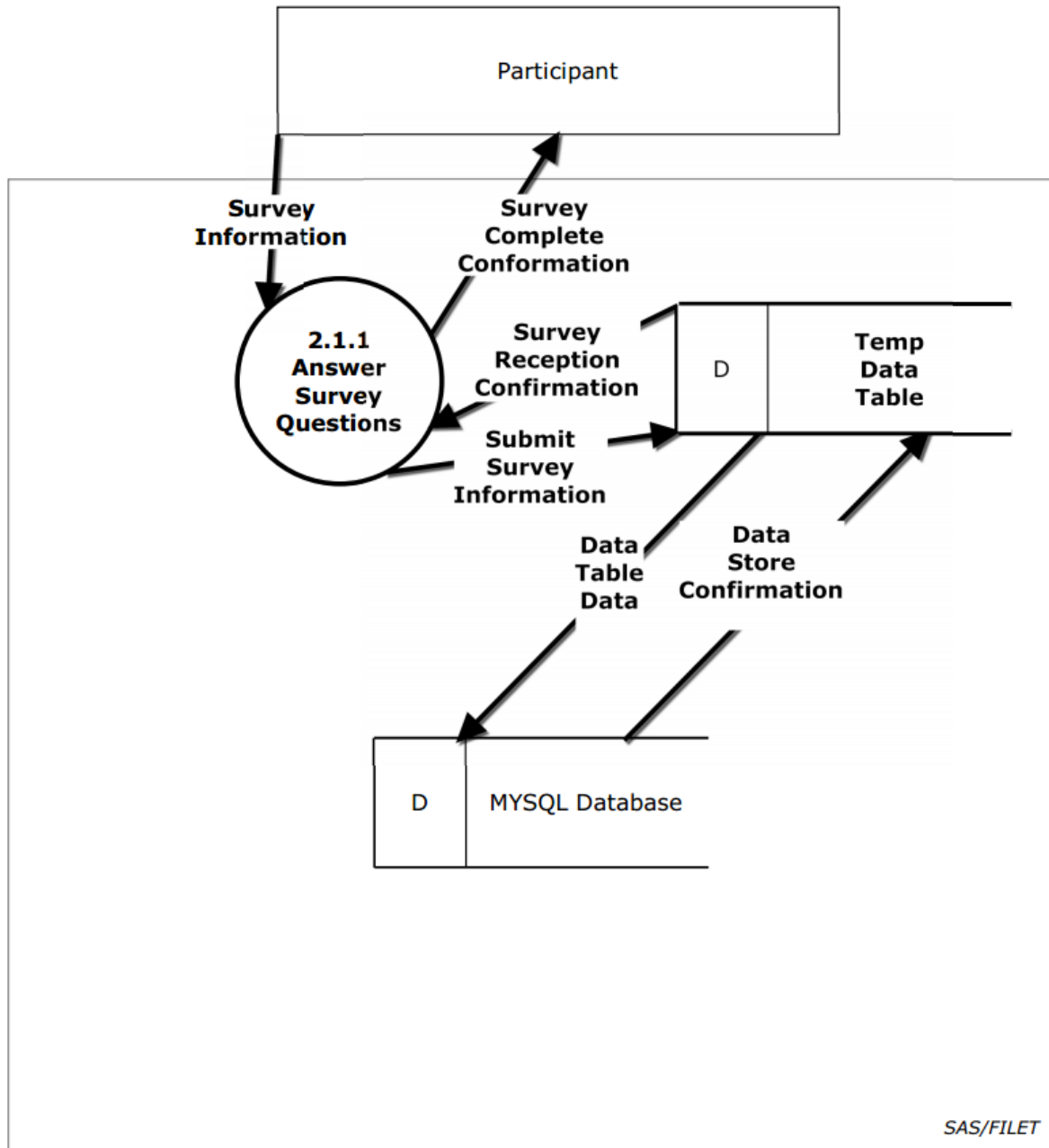
#### 2.1.x Take Association Test



### 1.5.3 Level 2: Take Survey

This level 2 diagram expands on the previous process Take Survey. This diagram shows the interaction between the Participant, sub-processes of Take Survey, and the Database.

#### 2.1.x Take Survey

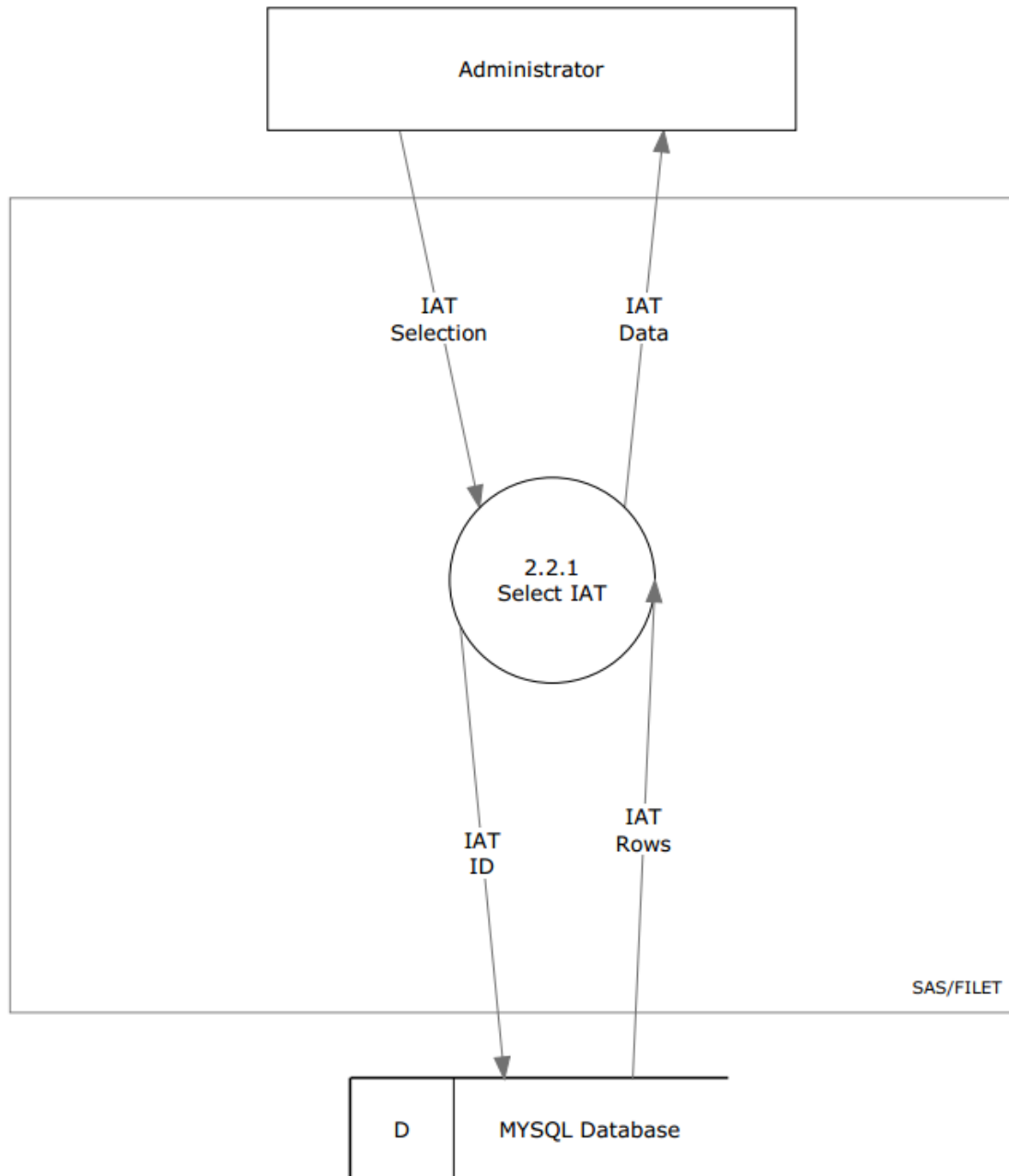




### 1.5.4 Level 2: Manage Data

This level 2 diagram expands on the previous process Manage Data. This diagram shows the interaction between the Administrator, sub-processes of Take Survey, and the Database.

#### 2.1.x Take Survey

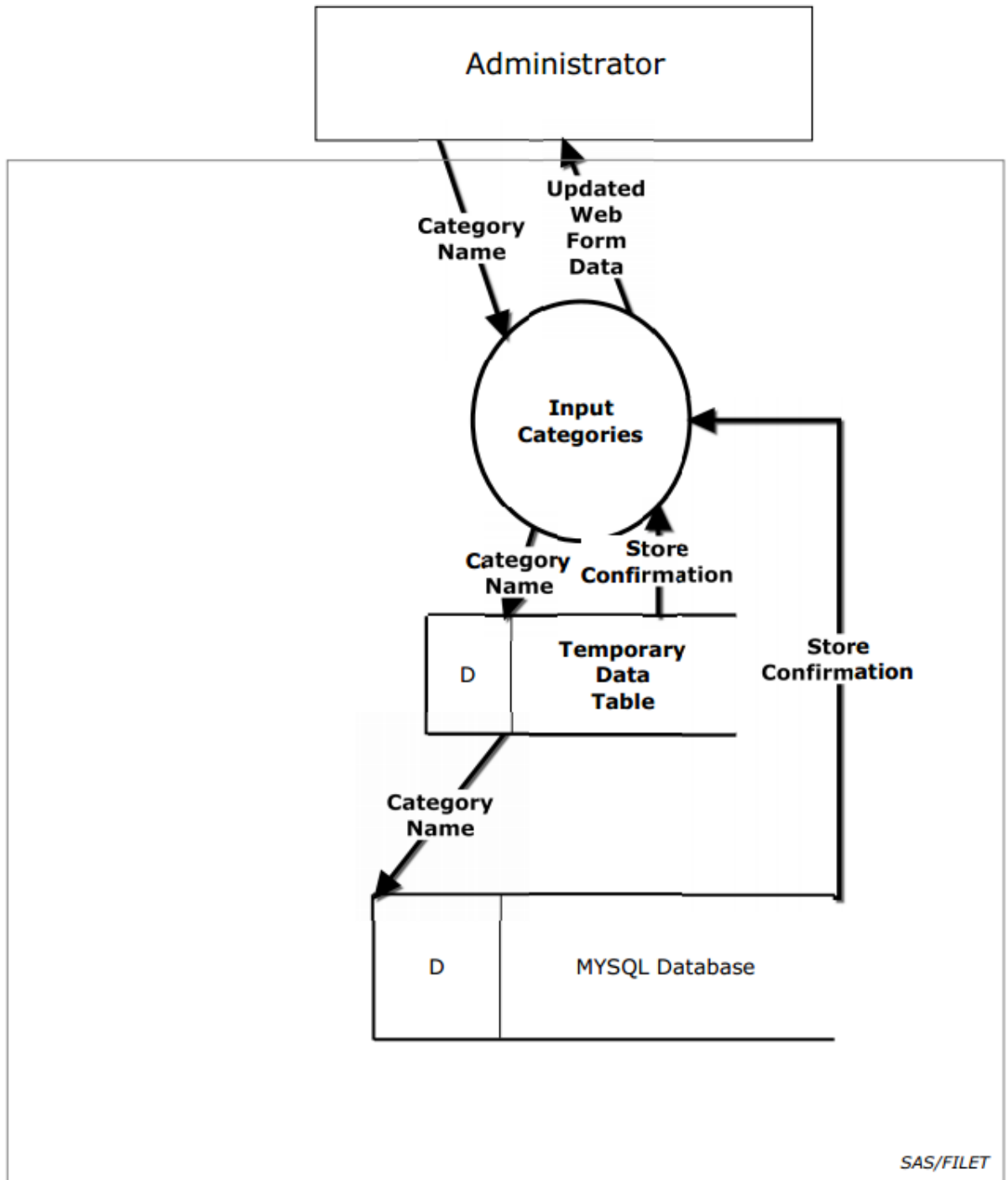


## 1.6 Level 3 Diagrams

### 1.6.1 Level 3: Create Categories

This level 3 diagram expands on the previous process Create Categories. This diagram shows the interaction between the administrator, sub-processes of Create Categories, and the Database.

#### 2.1.1.x ManageIATs.CreateIAT.CreateCategories

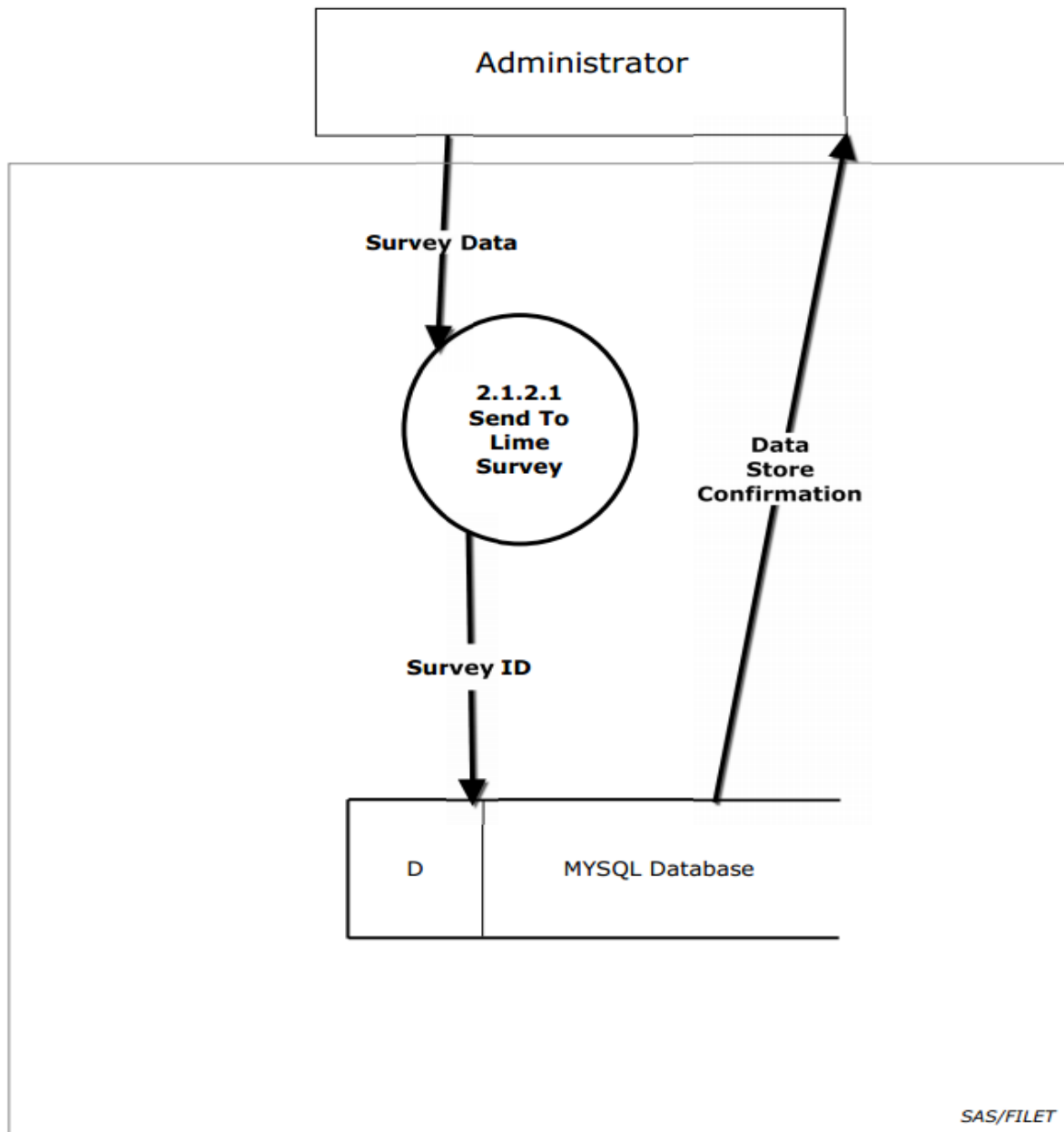




### 1.6.2 Level 3: Create Survey

This level 3 diagram expands on the previous process Create Survey. This diagram shows the interaction between the administrator, sub-processes of Create Survey, and the Database.

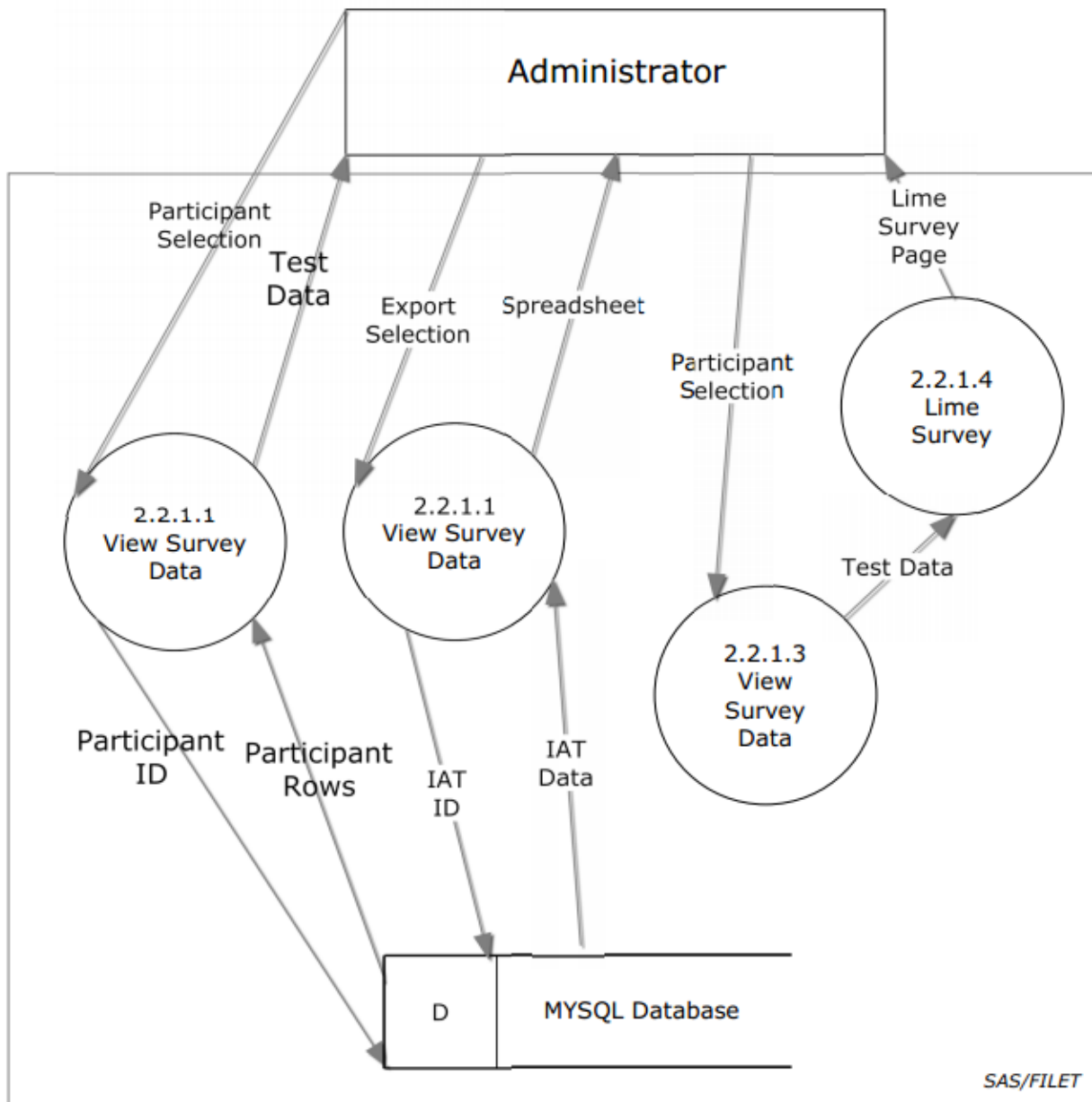
#### 2.1.2.x ManageIATs.CreateIAT.CreateSurvey



### 1.6.3 Level 3: Select Test to View

This level 3 diagram expands on the previous process Select Test To View. This diagram shows the interaction between the Administrator, sub-processes of Create Survey, sub Processes of Select Test to View, and the Database.

#### 2.1.2.x ManageIATs.ManageData.SelectTestToView





### 1.6.4 Level 3: Upload Stimuli

This level 3 diagram expands on the previous process Upload Stimuli. This diagram shows the interaction between the Administrator, sub-processes of Upload Stimuli and the Database

#### 2.1.3 ManageIATs.CreateIAT.UploadStimuli

